

Data Path : Z:\pestpcbsrv\HPCHEM1\FID\_D\Data\FD120221AL\  
 Data File : FD039680.D  
 Signal(s) : FID2B.CH  
 Acq On : 02 Dec 2021 18:30  
 Operator : AJ\MA  
 Sample : M4891-02  
 Misc :  
 ALS Vial : 57 Sample Multiplier: 1

Integration File: autoint1.e  
 Quant Time: Dec 03 00:25:23 2021  
 Quant Method : Z:\pestpcbsrv\HPCHEM1\FID\_D\methods\Aliphatic EPH 112321.M  
 Quant Title : GC Extractables  
 QLast Update : Wed Nov 24 01:36:43 2021  
 Response via : Initial Calibration  
 Integrator: ChemStation 6890 Scale Mode: Large solvent peaks clipped

Volume Inj. : 1 ul  
 Signal Phase : Rxi-1ms  
 Signal Info : 20M x 0.18mm x 0.18um

Compound	R.T.	Response	Conc Units
-----			
System Monitoring Compounds			
9) S ortho-Terphenyl (SURR)	11.656	4106554	32.235 ug/ml
Spiked Amount	50.000	Recovery	= 64.47%
12) S 1-chlorooctadecane (S...	13.084	3213746	32.670 ug/ml
Spiked Amount	50.000	Recovery	= 65.34%
Target Compounds			
3) T A~Naphthalene (C11.7)	6.132f	198282	1.558 ug/ml
17) T n-Tricontane (C30)	17.779	324213	3.042 ug/ml
18) T n-Dotriacontane (C32)	18.610	232778	2.235 ug/ml
-----			

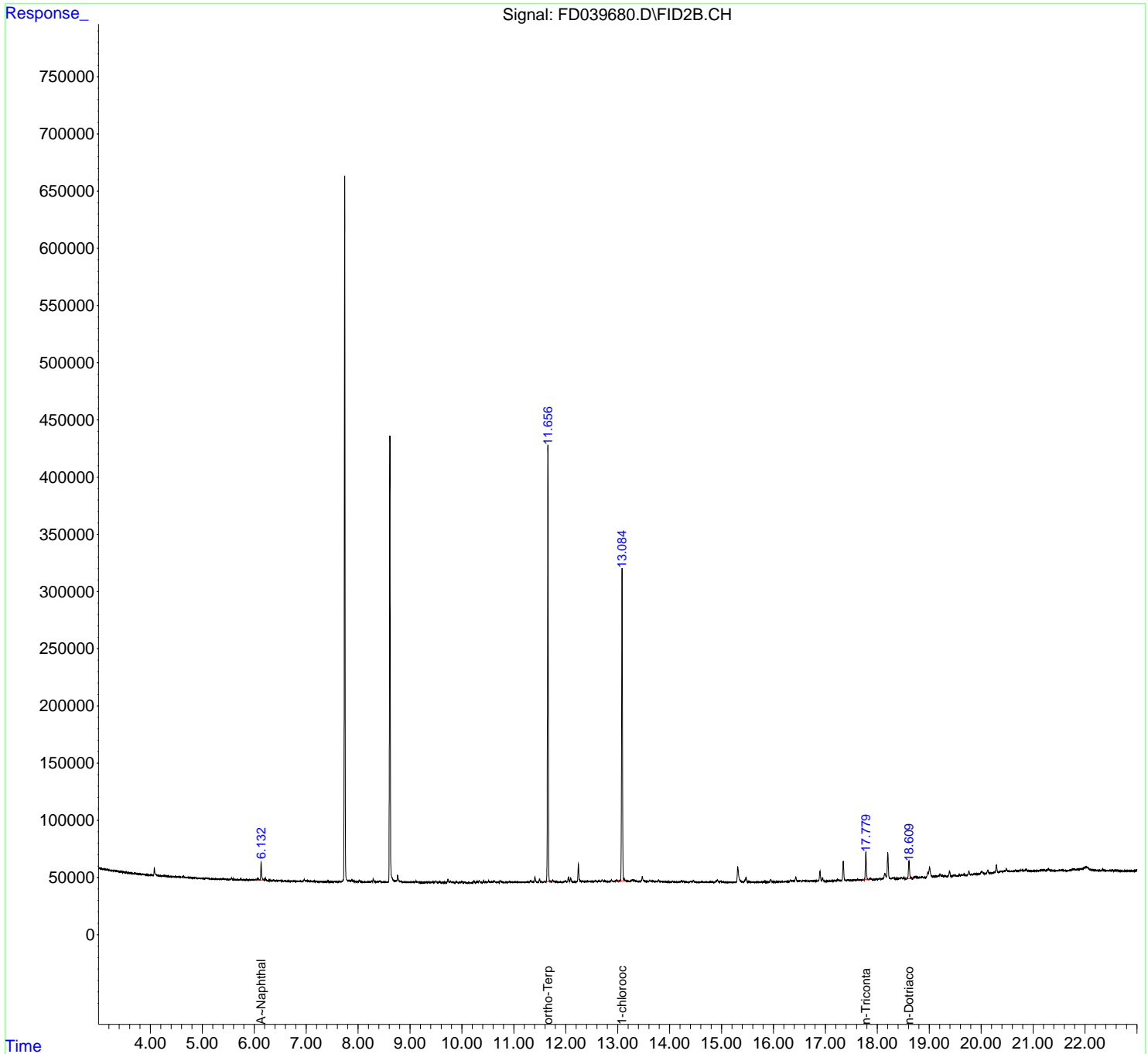
(f)=RT Delta > 1/2 Window

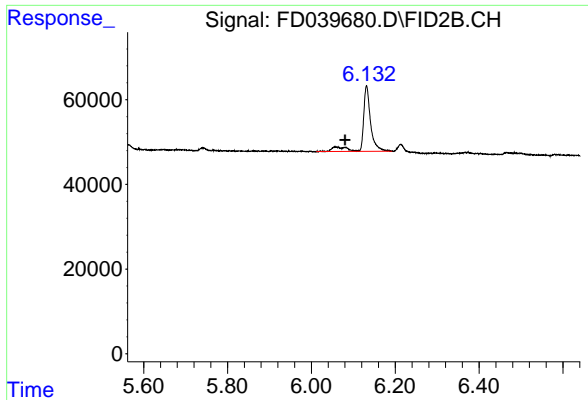
(m)=manual int.

Data Path : Z:\pestpcbsrv\HPCHEM1\FID\_D\Data\FD120221AL\  
Data File : FD039680.D  
Signal(s) : FID2B.CH  
Acq On : 02 Dec 2021 18:30  
Operator : AJ\MA  
Sample : M4891-02  
Misc :  
ALS Vial : 57 Sample Multiplier: 1

Integration File: autoint1.e  
Quant Time: Dec 03 00:25:23 2021  
Quant Method : Z:\pestpcbsrv\HPCHEM1\FID\_D\methods\Aliphatic EPH 112321.M  
Quant Title : GC Extractables  
QLast Update : Wed Nov 24 01:36:43 2021  
Response via : Initial Calibration  
Integrator: ChemStation 6890 Scale Mode: Large solvent peaks clipped

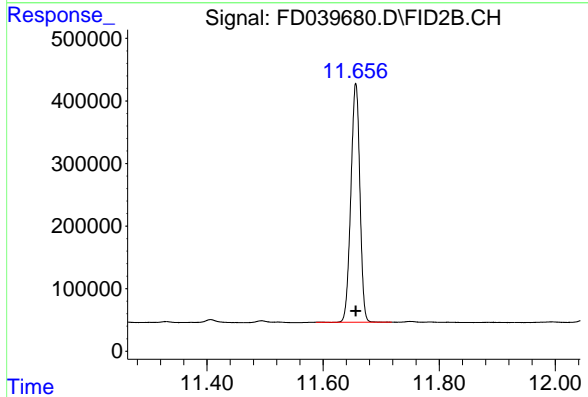
Volume Inj. : 1 ul  
Signal Phase : Rxi-1ms  
Signal Info : 20M x 0.18mm x 0.18um





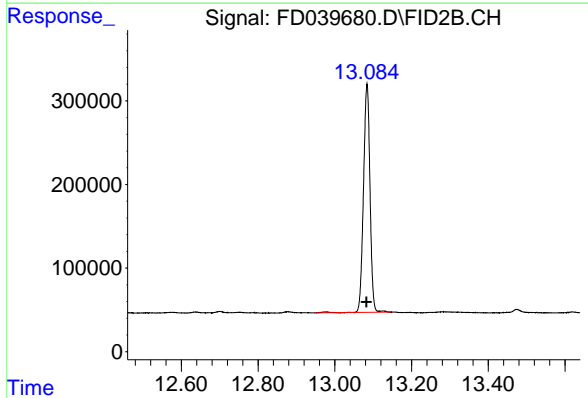
#3 A~Naphthalene (C11.7)

R.T.: 6.132 min  
Delta R.T.: 0.052 min  
Response: 198282  
Conc: 1.56 ug/ml



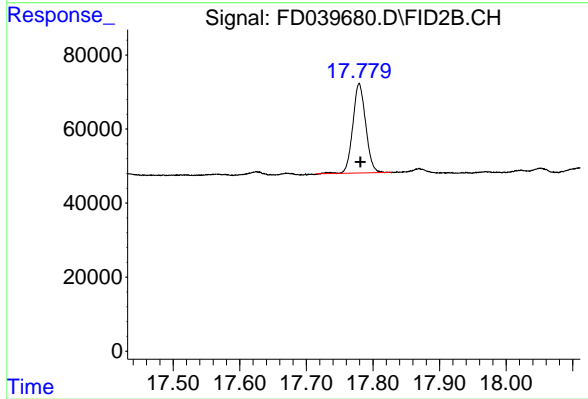
#9 ortho-Terphenyl (SURR)

R.T.: 11.656 min  
Delta R.T.: 0.000 min  
Response: 410654  
Conc: 32.24 ug/ml



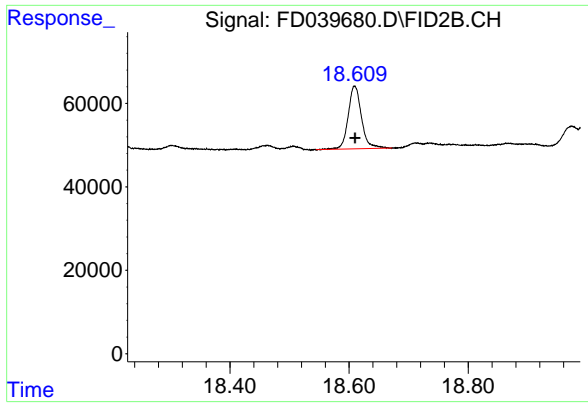
#12 1-chlorooctadecane (SURR)

R.T.: 13.084 min  
Delta R.T.: 0.001 min  
Response: 3213746  
Conc: 32.67 ug/ml



#17 n-Tricontane (C30)

R.T.: 17.779 min  
Delta R.T.: -0.002 min  
Response: 324213  
Conc: 3.04 ug/ml



#18 n-Dotriacontane (C32)

R.T.: 18.610 min  
Delta R.T.: 0.000 min  
Response: 232778  
Conc: 2.24 ug/ml