

Data Path : Z:\pestpcbsrv\HPCHEM1\FID_D\Data\FD120221AL\
 Data File : FD039679.D
 Signal(s) : FID2B.CH
 Acq On : 02 Dec 2021 17:49
 Operator : AJ\MA
 Sample : M4891-01
 Misc :
 ALS Vial : 56 Sample Multiplier: 1

Integration File: autoint1.e
 Quant Time: Dec 03 00:25:04 2021
 Quant Method : Z:\pestpcbsrv\HPCHEM1\FID_D\methods\Aliphatic EPH 112321.M
 Quant Title : GC Extractables
 QLast Update : Wed Nov 24 01:36:43 2021
 Response via : Initial Calibration
 Integrator: ChemStation 6890 Scale Mode: Large solvent peaks clipped

Volume Inj. : 1 ul
 Signal Phase : Rxi-1ms
 Signal Info : 20M x 0.18mm x 0.18um

Compound	R.T.	Response	Conc Units

System Monitoring Compounds			
9) S ortho-Terphenyl (SURR)	11.657	5563531	43.672 ug/mlm
Spiked Amount	50.000	Recovery	= 87.34%
12) S 1-chlorooctadecane (S...	13.084	4353350	44.256 ug/mlm
Spiked Amount	50.000	Recovery	= 88.51%

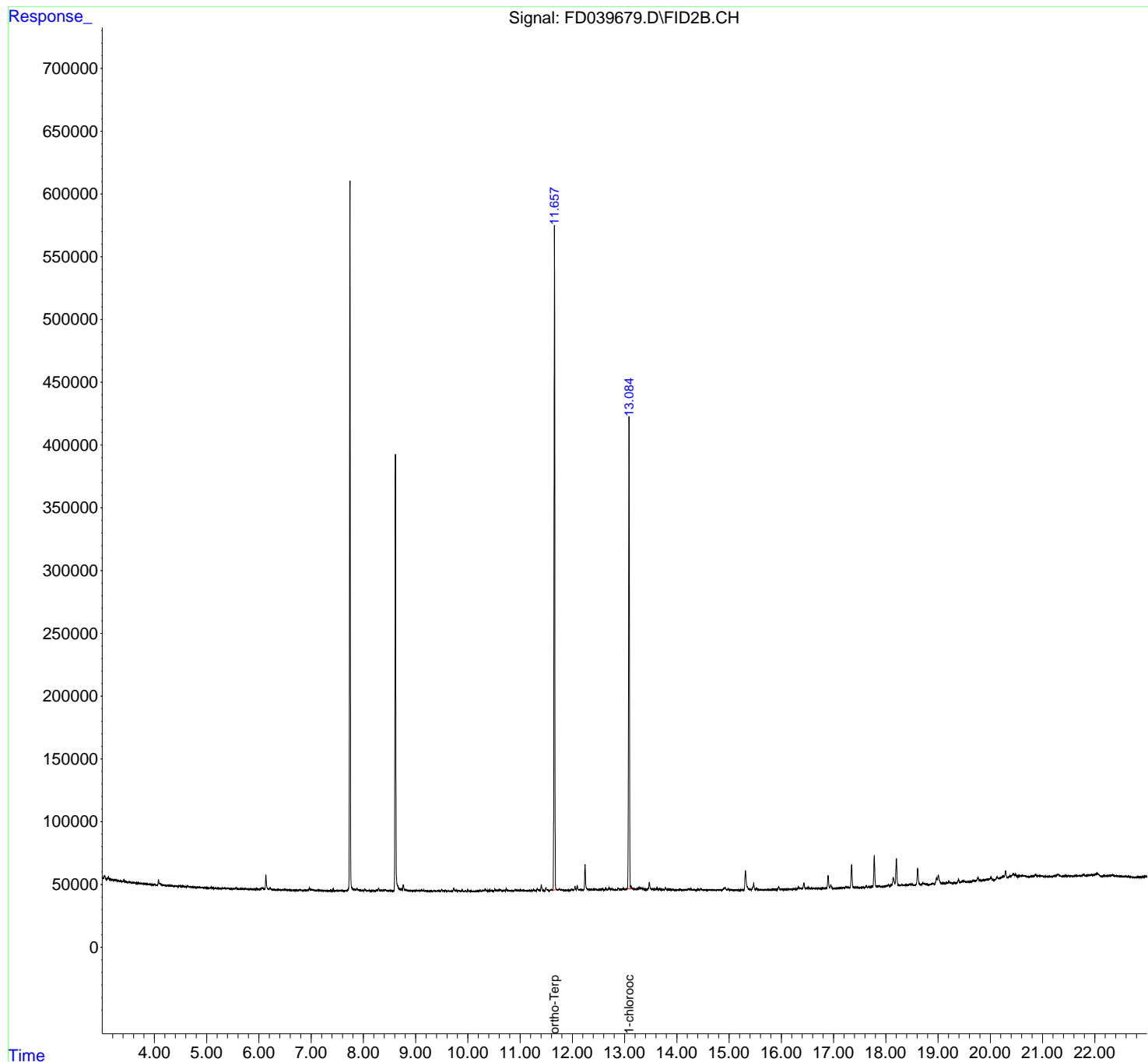
Target Compounds

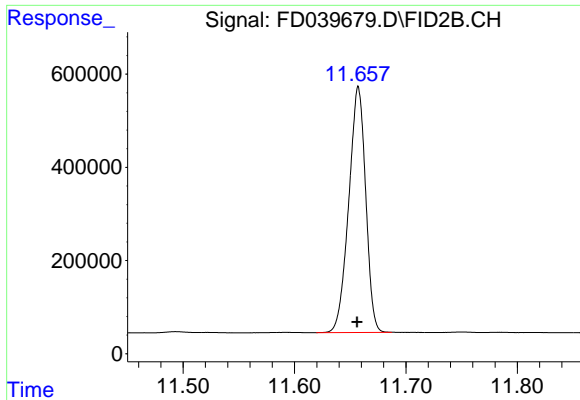
(f)=RT Delta > 1/2 Window (m)=manual int.

Data Path : Z:\pestpcbsrv\HPCHEM1\FID_D\Data\FD120221AL\
Data File : FD039679.D
Signal(s) : FID2B.CH
Acq On : 02 Dec 2021 17:49
Operator : AJ\MA
Sample : M4891-01
Misc :
ALS Vial : 56 Sample Multiplier: 1

Integration File: autoint1.e
Quant Time: Dec 03 00:25:04 2021
Quant Method : Z:\pestpcbsrv\HPCHEM1\FID_D\methods\Aliphatic EPH 112321.M
Quant Title : GC Extractables
QLast Update : Wed Nov 24 01:36:43 2021
Response via : Initial Calibration
Integrator: ChemStation 6890 Scale Mode: Large solvent peaks clipped

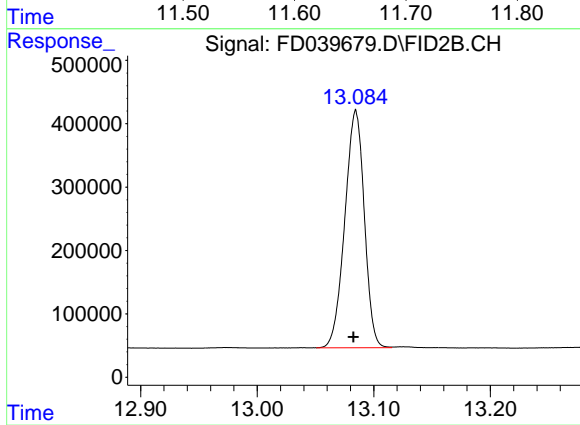
Volume Inj. : 1 ul
Signal Phase : Rxi-1ms
Signal Info : 20M x 0.18mm x 0.18um





#9 ortho-Terphenyl (SURR)

R.T.: 11.657 min
Delta R.T.: 0.000 min
Response: 5563531
Conc: 43.67 ug/ml m



#12 1-chlorooctadecane (SURR)

R.T.: 13.084 min
Delta R.T.: 0.002 min
Response: 4353350
Conc: 44.26 ug/ml m