

Data Path : Z:\pestpcbsrv\HPCHEM1\FID\_D\Data\FD120321AL\  
 Data File : FD039704.D  
 Signal(s) : FID2B.CH  
 Acq On : 03 Dec 2021 18:52  
 Operator : AJ\MA  
 Sample : M4909-01  
 Misc :  
 ALS Vial : 58 Sample Multiplier: 1

Integration File: autoint1.e  
 Quant Time: Dec 03 22:53:14 2021  
 Quant Method : Z:\pestpcbsrv\HPCHEM1\FID\_D\methods\Aliphatic EPH 112321.M  
 Quant Title : GC Extractables  
 QLast Update : Wed Nov 24 01:36:43 2021  
 Response via : Initial Calibration  
 Integrator: ChemStation 6890 Scale Mode: Large solvent peaks clipped

Volume Inj. : 1 ul  
 Signal Phase : Rxi-1ms  
 Signal Info : 20M x 0.18mm x 0.18um

Compound	R.T.	Response	Conc Units
-----			
System Monitoring Compounds			
9) S ortho-Terphenyl (SURR)	11.655	4547645	35.698 ug/ml
Spiked Amount	50.000	Recovery	= 71.40%
12) S 1-chlorooctadecane (S...	13.082	3704906	37.664 ug/ml
Spiked Amount	50.000	Recovery	= 75.33%
Target Compounds			
3) T A~Naphthalene (C11.7)	6.077	265773	2.089 ug/ml
4) T n-Dodecane (C12)	6.512	128879	1.119 ug/ml
5) T A~2-methylnaphthalene...	7.131	284107	2.231 ug/ml
6) T n-Tetradecane (C14)	8.253	180050	1.554 ug/ml
10) T n-Eicosane (C20)	12.590	437412	3.728 ug/ml
13) T n-Docosane (C22)	13.871	270829	2.335 ug/ml
14) T n-Tetracosane (C24)	14.920	475189	4.072 ug/ml
-----			

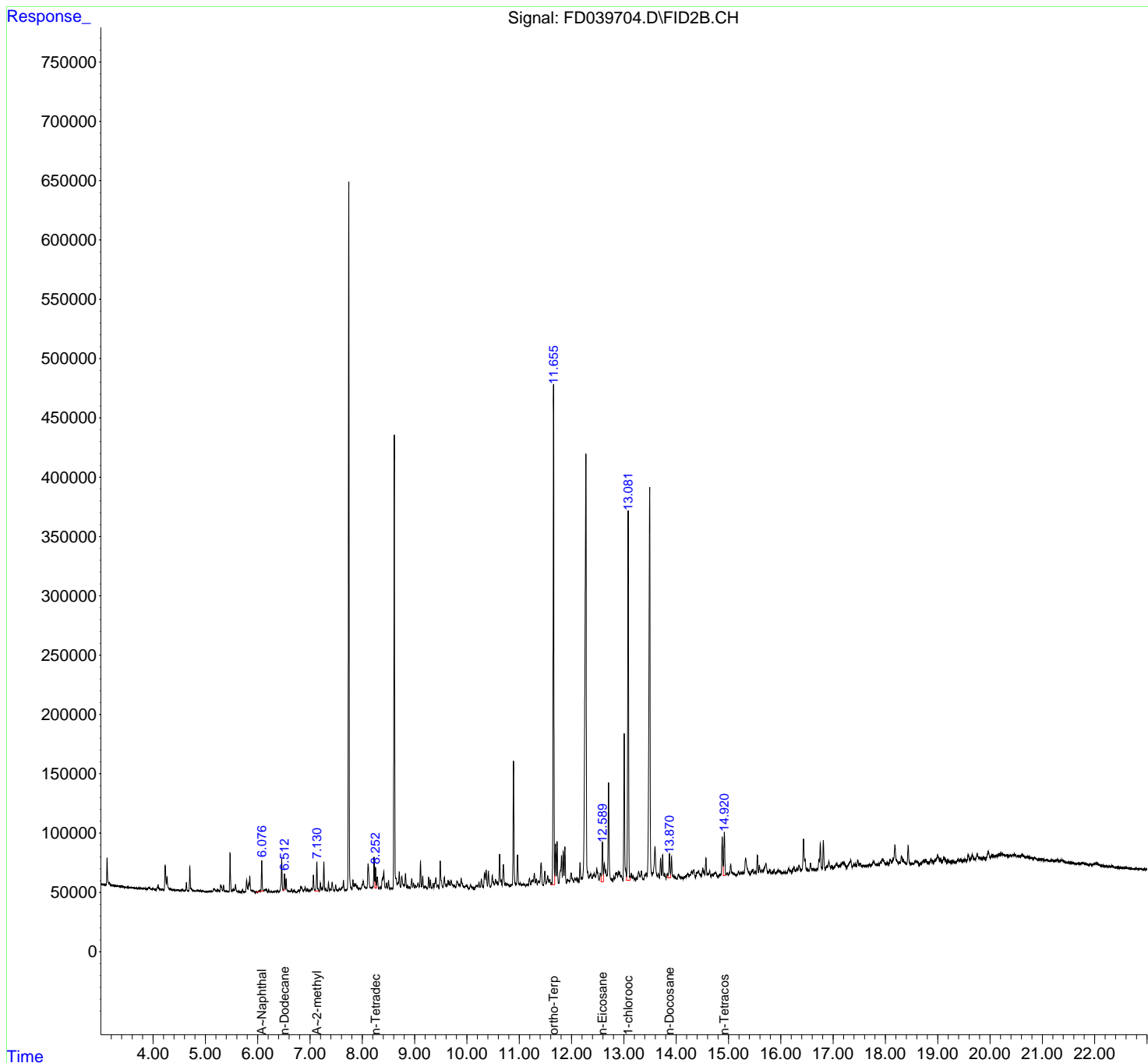
(f)=RT Delta > 1/2 Window

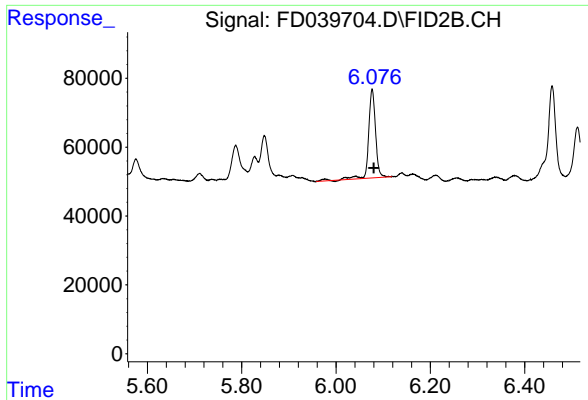
(m)=manual int.

Data Path : Z:\pestpcbsrv\HPCHEM1\FID\_D\Data\FD120321AL\  
 Data File : FD039704.D  
 Signal(s) : FID2B.CH  
 Acq On : 03 Dec 2021 18:52  
 Operator : AJ\MA  
 Sample : M4909-01  
 Misc :  
 ALS Vial : 58 Sample Multiplier: 1

Integration File: autoint1.e  
 Quant Time: Dec 03 22:53:14 2021  
 Quant Method : Z:\pestpcbsrv\HPCHEM1\FID\_D\methods\Aliphatic EPH 112321.M  
 Quant Title : GC Extractables  
 QLast Update : Wed Nov 24 01:36:43 2021  
 Response via : Initial Calibration  
 Integrator: ChemStation 6890 Scale Mode: Large solvent peaks clipped

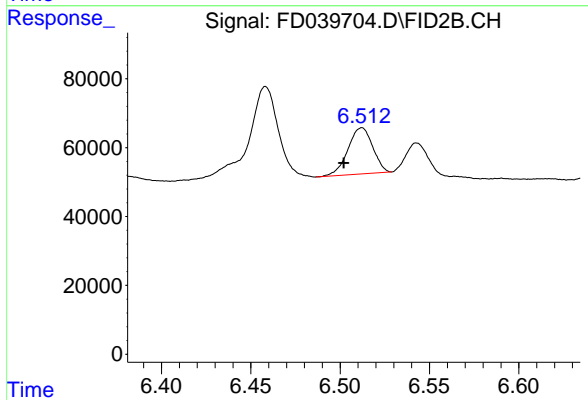
Volume Inj. : 1 ul  
 Signal Phase : Rxi-1ms  
 Signal Info : 20M x 0.18mm x 0.18um





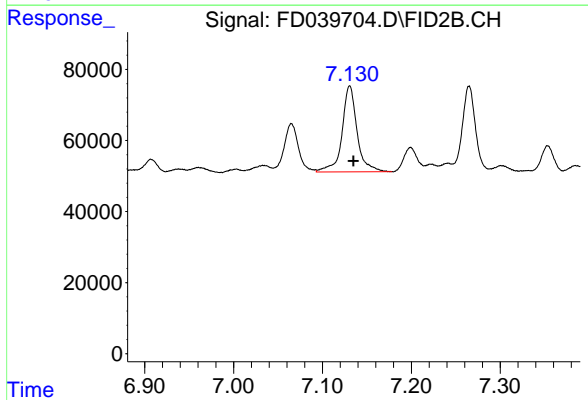
#3 A~Naphthalene (C11.7)

R.T.: 6.077 min  
Delta R.T.: -0.003 min  
Response: 265773  
Conc: 2.09 ug/ml



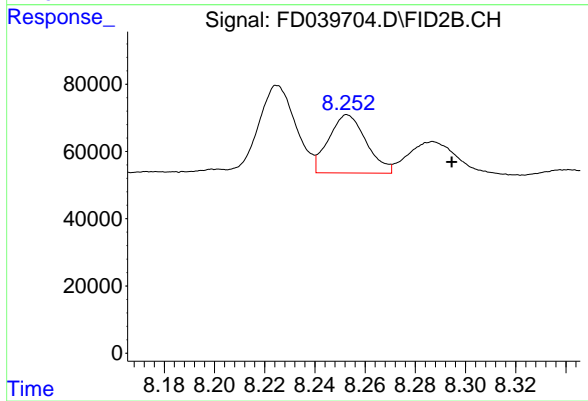
#4 n-Dodecane (C12)

R.T.: 6.512 min  
Delta R.T.: 0.010 min  
Response: 128879  
Conc: 1.12 ug/ml



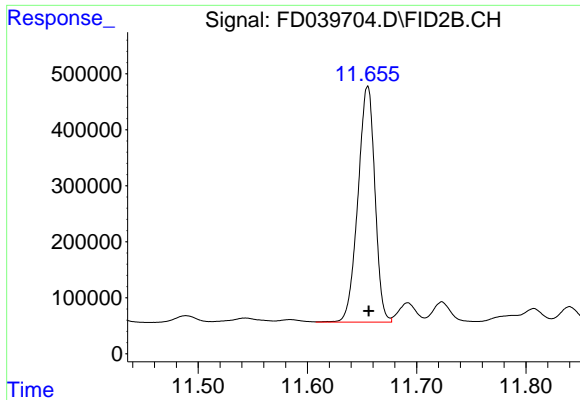
#5 A~2-methylnaphthalene (C12.89)

R.T.: 7.131 min  
Delta R.T.: -0.004 min  
Response: 284107  
Conc: 2.23 ug/ml



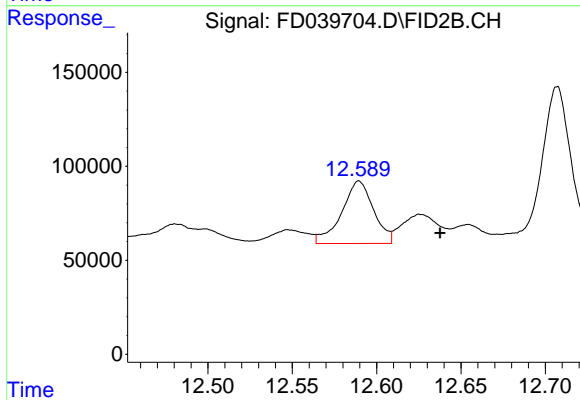
#6 n-Tetradecane (C14)

R.T.: 8.253 min  
Delta R.T.: -0.041 min  
Response: 180050  
Conc: 1.55 ug/ml



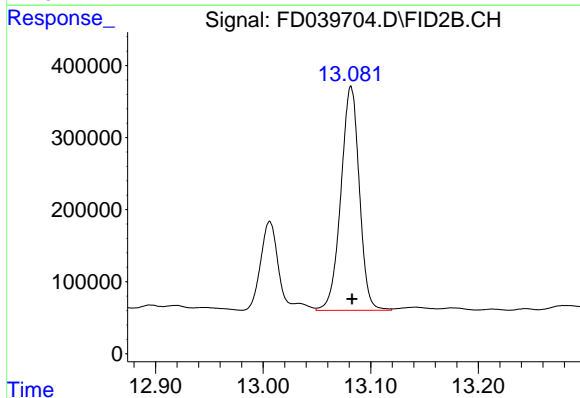
#9 ortho-Terphenyl (SURR)

R.T.: 11.655 min  
Delta R.T.: -0.001 min  
Response: 4547645  
Conc: 35.70 ug/ml



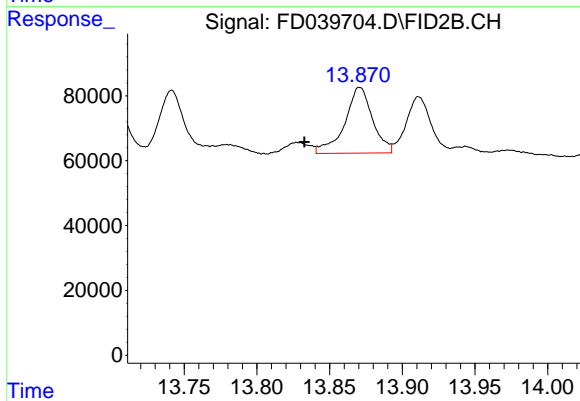
#10 n-Eicosane (C20)

R.T.: 12.590 min  
Delta R.T.: -0.048 min  
Response: 437412  
Conc: 3.73 ug/ml



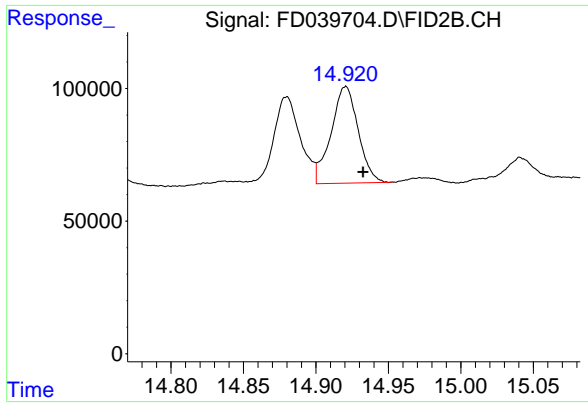
#12 1-chlorooctadecane (SURR)

R.T.: 13.082 min  
Delta R.T.: -0.001 min  
Response: 3704906  
Conc: 37.66 ug/ml



#13 n-Docosane (C22)

R.T.: 13.871 min  
Delta R.T.: 0.038 min  
Response: 270829  
Conc: 2.33 ug/ml



#14 n-Tetracosane (C24)

R.T.: 14.920 min  
Delta R.T.: -0.012 min  
Response: 475189  
Conc: 4.07 ug/ml