

Data Path : Z:\pestpcbsrv\HPCHEM1\FID_D\Data\FD120321AL\
 Data File : FD039705.D
 Signal(s) : FID2B.CH
 Acq On : 03 Dec 2021 19:32
 Operator : AJ\MA
 Sample : M4909-02
 Misc :
 ALS Vial : 59 Sample Multiplier: 1

Integration File: autoint1.e
 Quant Time: Dec 03 22:53:28 2021
 Quant Method : Z:\pestpcbsrv\HPCHEM1\FID_D\methods\Aliphatic EPH 112321.M
 Quant Title : GC Extractables
 QLast Update : Wed Nov 24 01:36:43 2021
 Response via : Initial Calibration
 Integrator: ChemStation 6890 Scale Mode: Large solvent peaks clipped

Volume Inj. : 1 ul
 Signal Phase : Rxi-1ms
 Signal Info : 20M x 0.18mm x 0.18um

Compound	R.T.	Response	Conc Units

System Monitoring Compounds			
9) S ortho-Terphenyl (SURR)	11.653	3867169	30.356 ug/ml
Spiked Amount	50.000	Recovery	= 60.71%
12) S 1-chlorooctadecane (S...	13.080	3057331	31.080 ug/ml
Spiked Amount	50.000	Recovery	= 62.16%

Target Compounds

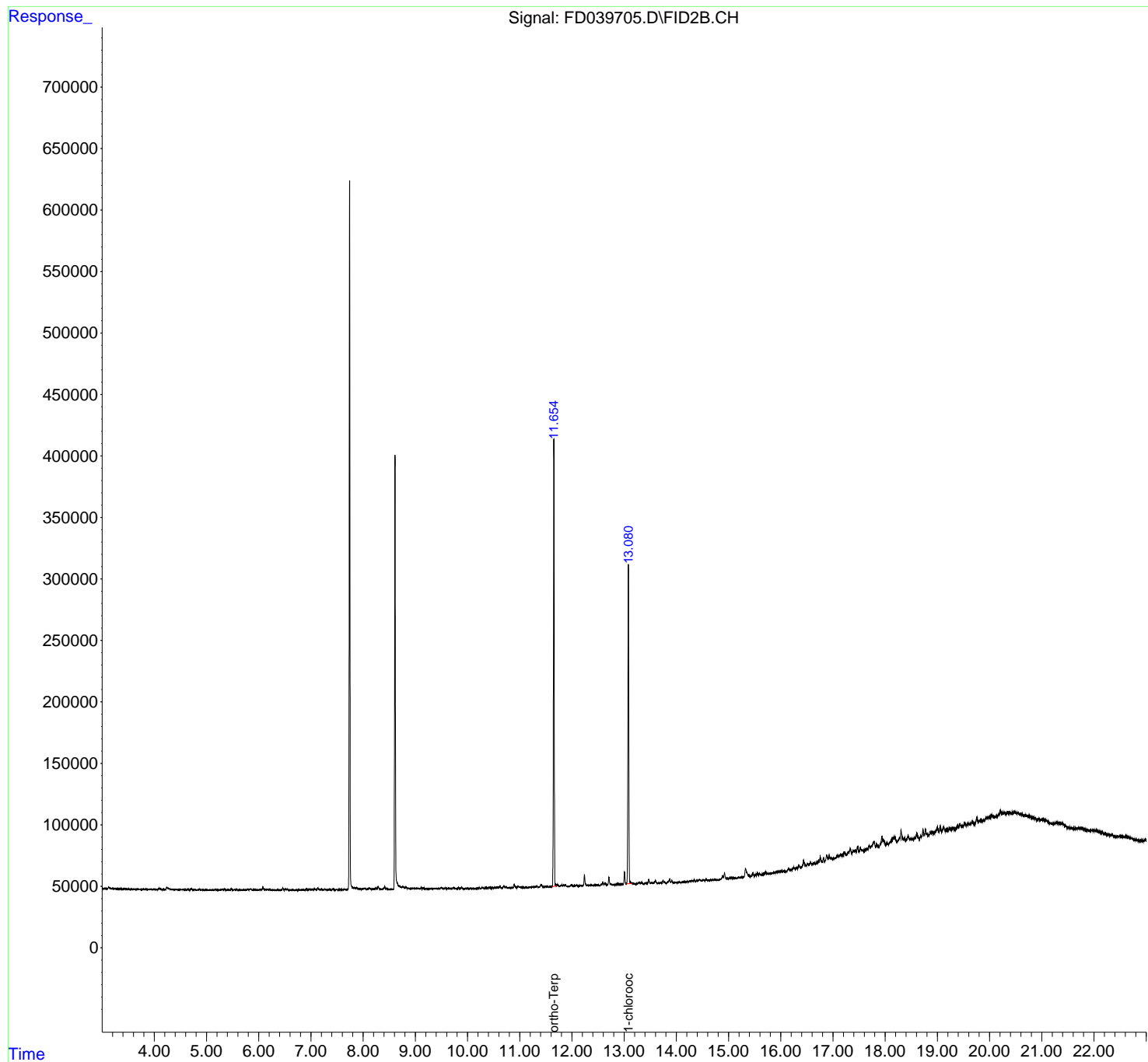
(f)=RT Delta > 1/2 Window

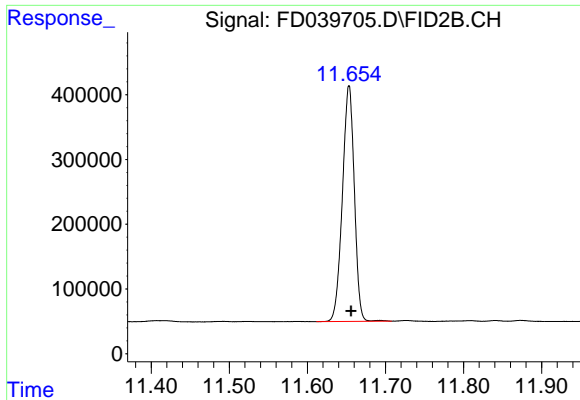
(m)=manual int.

Data Path : Z:\pestpcbsrv\HPCHEM1\FID_D\Data\FD120321AL\
Data File : FD039705.D
Signal(s) : FID2B.CH
Acq On : 03 Dec 2021 19:32
Operator : AJ\MA
Sample : M4909-02
Misc :
ALS Vial : 59 Sample Multiplier: 1

Integration File: autoint1.e
Quant Time: Dec 03 22:53:28 2021
Quant Method : Z:\pestpcbsrv\HPCHEM1\FID_D\methods\Aliphatic EPH 112321.M
Quant Title : GC Extractables
QLast Update : Wed Nov 24 01:36:43 2021
Response via : Initial Calibration
Integrator: ChemStation 6890 Scale Mode: Large solvent peaks clipped

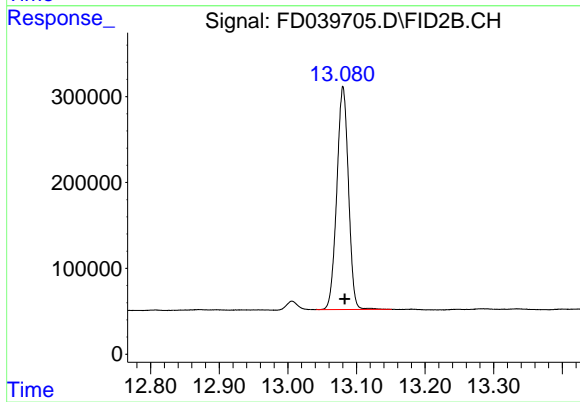
Volume Inj. : 1 ul
Signal Phase : Rxi-1ms
Signal Info : 20M x 0.18mm x 0.18um





#9 ortho-Terphenyl (SURR)

R.T.: 11.653 min
Delta R.T.: -0.003 min
Response: 3867169
Conc: 30.36 ug/ml



#12 1-chlorooctadecane (SURR)

R.T.: 13.080 min
Delta R.T.: -0.002 min
Response: 3057331
Conc: 31.08 ug/ml