

Data Path : Z:\pestpcbsrv\HPCHEM1\FID_D\Data\FD120321AL\
 Data File : FD039706.D
 Signal(s) : FID2B.CH
 Acq On : 03 Dec 2021 20:11
 Operator : AJ\MA
 Sample : M4910-01
 Misc :
 ALS Vial : 60 Sample Multiplier: 1

Integration File: autoint1.e
 Quant Time: Dec 03 22:53:40 2021
 Quant Method : Z:\pestpcbsrv\HPCHEM1\FID_D\methods\Aliphatic EPH 112321.M
 Quant Title : GC Extractables
 QLast Update : Wed Nov 24 01:36:43 2021
 Response via : Initial Calibration
 Integrator: ChemStation 6890 Scale Mode: Large solvent peaks clipped

Volume Inj. : 1 ul
 Signal Phase : Rxi-1ms
 Signal Info : 20M x 0.18mm x 0.18um

Compound	R.T.	Response	Conc Units

System Monitoring Compounds			
9) S ortho-Terphenyl (SURR)	11.655	4938093	38.763 ug/ml
Spiked Amount	50.000	Recovery	= 77.53%
12) S 1-chlorooctadecane (S...	13.082	4023901	40.906 ug/ml
Spiked Amount	50.000	Recovery	= 81.81%

Target Compounds

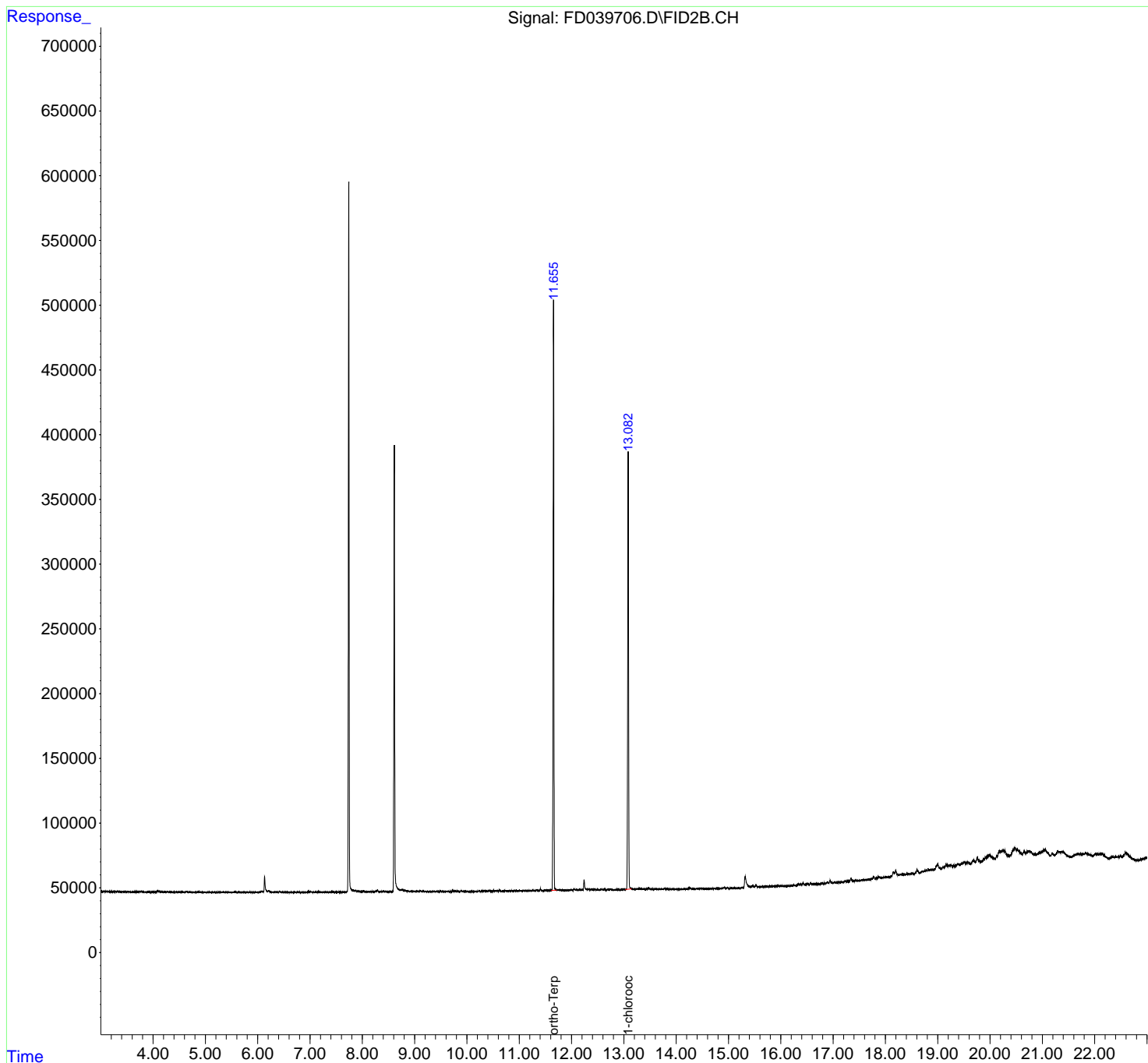
(f)=RT Delta > 1/2 Window

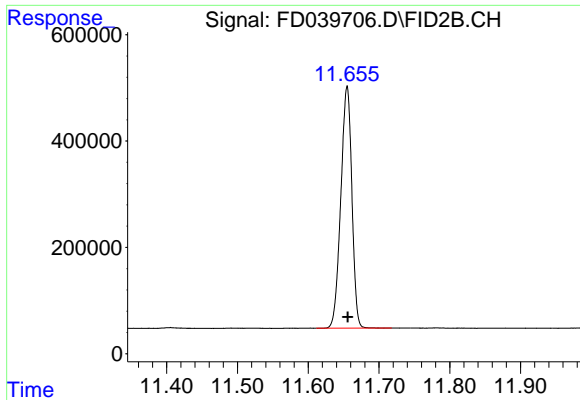
(m)=manual int.

Data Path : Z:\pestpcbsrv\HPCHEM1\FID_D\Data\FD120321AL\
 Data File : FD039706.D
 Signal(s) : FID2B.CH
 Acq On : 03 Dec 2021 20:11
 Operator : AJ\MA
 Sample : M4910-01
 Misc :
 ALS Vial : 60 Sample Multiplier: 1

Integration File: autoint1.e
 Quant Time: Dec 03 22:53:40 2021
 Quant Method : Z:\pestpcbsrv\HPCHEM1\FID_D\methods\Aliphatic EPH 112321.M
 Quant Title : GC Extractables
 QLast Update : Wed Nov 24 01:36:43 2021
 Response via : Initial Calibration
 Integrator: ChemStation 6890 Scale Mode: Large solvent peaks clipped

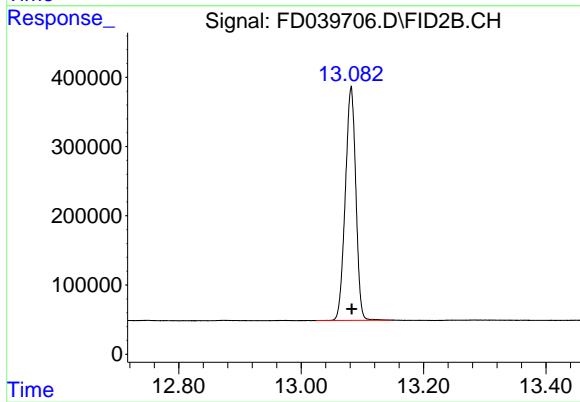
Volume Inj. : 1 ul
 Signal Phase : Rxi-1ms
 Signal Info : 20M x 0.18mm x 0.18um





#9 ortho-Terphenyl (SURR)

R.T.: 11.655 min
Delta R.T.: -0.001 min
Response: 4938093
Conc: 38.76 ug/ml



#12 1-chlorooctadecane (SURR)

R.T.: 13.082 min
Delta R.T.: -0.001 min
Response: 4023901
Conc: 40.91 ug/ml