

Data Path : Z:\pestpcbsrv\HPCHEM1\FID\_D\Data\FD120321AL\  
 Data File : FD039712.D  
 Signal(s) : FID2B.CH  
 Acq On : 04 Dec 2021 00:05  
 Operator : AJ\MA  
 Sample : M4910-04  
 Misc :  
 ALS Vial : 66 Sample Multiplier: 1

Integration File: sample.E  
 Quant Time: Dec 04 01:18:45 2021  
 Quant Method : Z:\pestpcbsrv\HPCHEM1\FID\_D\methods\Aliphatic EPH 112321.M  
 Quant Title : GC Extractables  
 QLast Update : Wed Nov 24 01:36:43 2021  
 Response via : Initial Calibration  
 Integrator: ChemStation 6890 Scale Mode: Large solvent peaks clipped

Volume Inj. : 1 ul  
 Signal Phase : Rxi-1ms  
 Signal Info : 20M x 0.18mm x 0.18um

Compound	R.T.	Response	Conc Units
-----			
System Monitoring Compounds			
9) S ortho-Terphenyl (SURR)	11.656	5863538	46.027 ug/ml
Spiked Amount	50.000	Recovery	= 92.05%
12) S 1-chlorooctadecane (S...	13.082	4520418	45.954 ug/ml
Spiked Amount	50.000	Recovery	= 91.91%

Target Compounds

-----

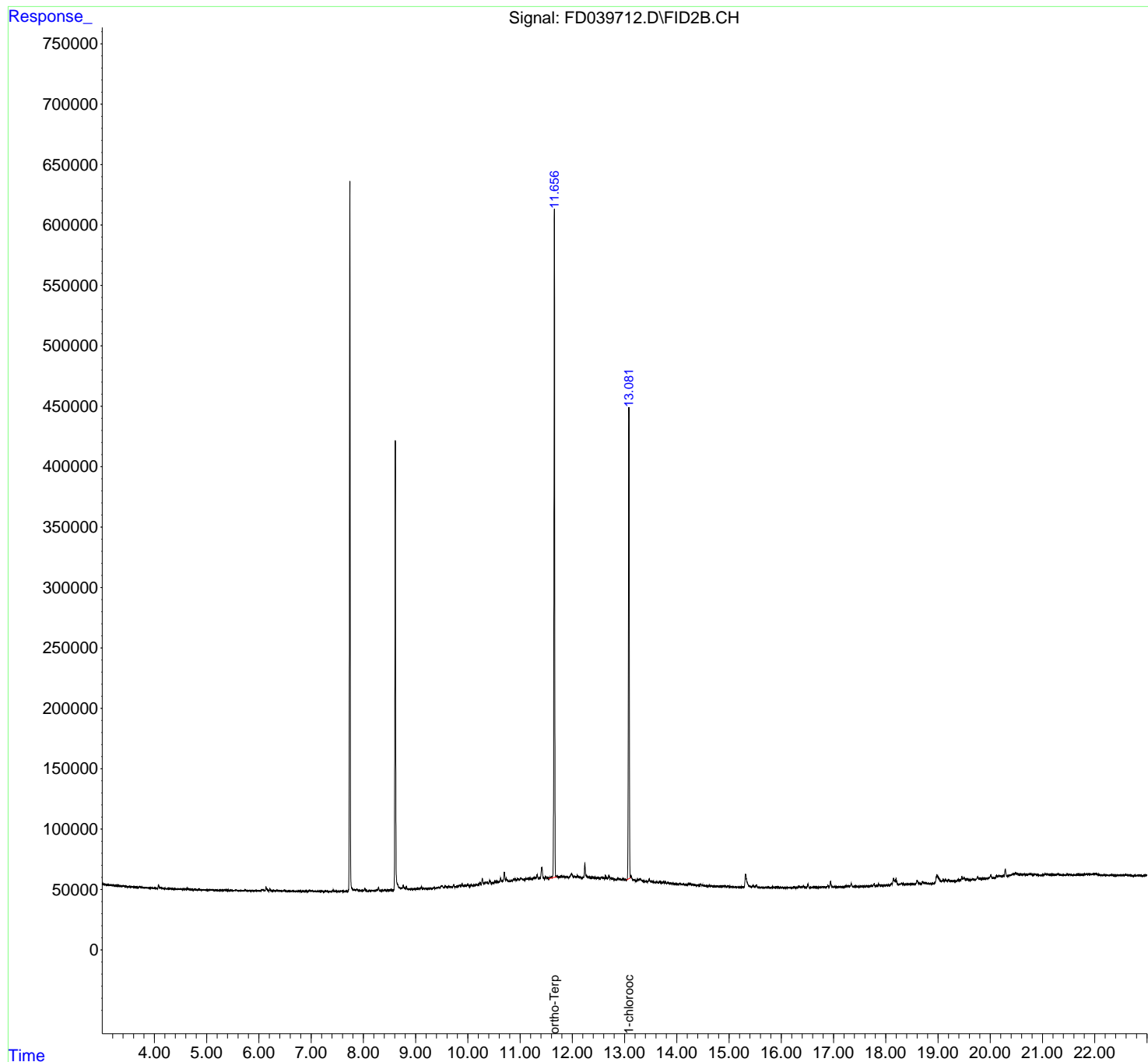
(f)=RT Delta > 1/2 Window

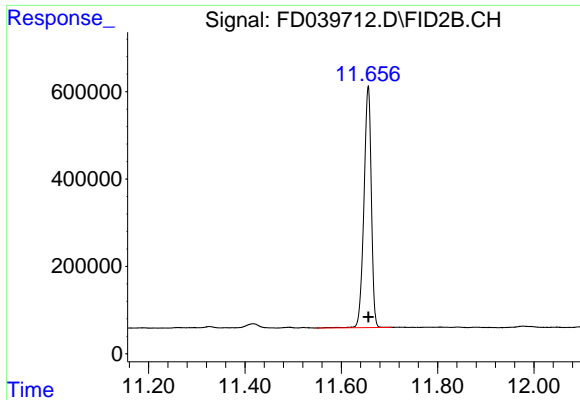
(m)=manual int.

Data Path : Z:\pestpcbsrv\HPCHEM1\FID\_D\Data\FD120321AL\  
 Data File : FD039712.D  
 Signal(s) : FID2B.CH  
 Acq On : 04 Dec 2021 00:05  
 Operator : AJ\MA  
 Sample : M4910-04  
 Misc :  
 ALS Vial : 66 Sample Multiplier: 1

Integration File: sample.E  
 Quant Time: Dec 04 01:18:45 2021  
 Quant Method : Z:\pestpcbsrv\HPCHEM1\FID\_D\methods\Aliphatic EPH 112321.M  
 Quant Title : GC Extractables  
 QLast Update : Wed Nov 24 01:36:43 2021  
 Response via : Initial Calibration  
 Integrator: ChemStation 6890 Scale Mode: Large solvent peaks clipped

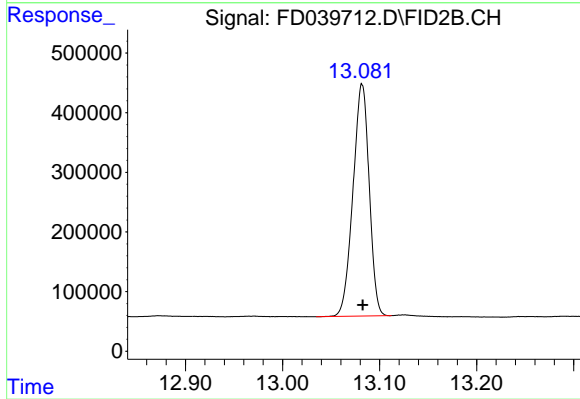
Volume Inj. : 1 ul  
 Signal Phase : Rxi-1ms  
 Signal Info : 20M x 0.18mm x 0.18um





#9 ortho-Terphenyl (SURR)

R.T.: 11.656 min  
Delta R.T.: 0.000 min  
Response: 5863538  
Conc: 46.03 ug/ml



#12 1-chlorooctadecane (SURR)

R.T.: 13.082 min  
Delta R.T.: 0.000 min  
Response: 4520418  
Conc: 45.95 ug/ml