

Data Path : Z:\pestpcbsrv\HPCHEM1\FID_D\Data\FD120518AR\
 Data File : FD026750.D
 Signal(s) : FID2B.CH
 Acq On : 05 Dec 2018 19:04
 Operator : AJ\SJ
 Sample : J6202-01
 Misc :
 ALS Vial : 56 Sample Multiplier: 1

Integration File: autoint1.e
 Quant Time: Dec 06 04:19:44 2018
 Quant Method : Z:\pestpcbsrv\HPCHEM1\FID_D\methods\Aromatic EPH 110818.M
 Quant Title : GC Extractables
 QLast Update : Thu Nov 08 18:15:51 2018
 Response via : Initial Calibration
 Integrator: ChemStation 6890 Scale Mode: Large solvent peaks clipped

Volume Inj. : 1 µl
 Signal Phase : Rxi-1ms
 Signal Info : 20M x 0.18mm x 0.18µm

Compound	R.T.	Response	Conc Units

System Monitoring Compounds			
4) S 2-Bromonaphthalene (S...	7.381	2764700	36.412 ug/ml
Spiked Amount 50.000		Recovery =	72.82%
6) S 2-Fluorobiphenyl (SURR)	8.231	1290168	24.674 ug/ml
Spiked Amount 50.000 Range 0 - 131		Recovery =	49.35%
11) S ortho-Terphenyl (SURR)	11.276	1961621	23.143 ug/ml
Spiked Amount 50.000		Recovery =	46.29%

Target Compounds

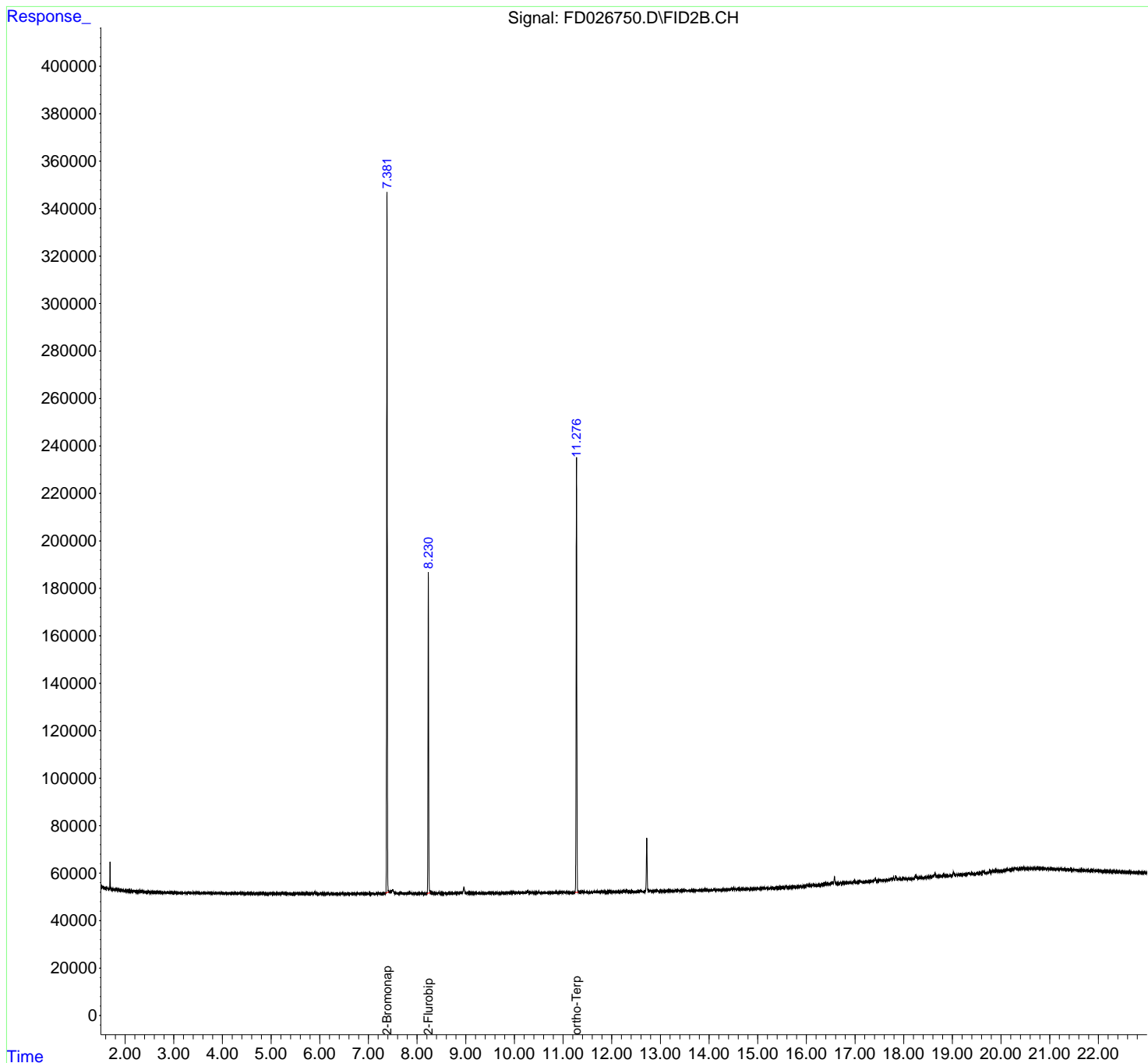
(f)=RT Delta > 1/2 Window

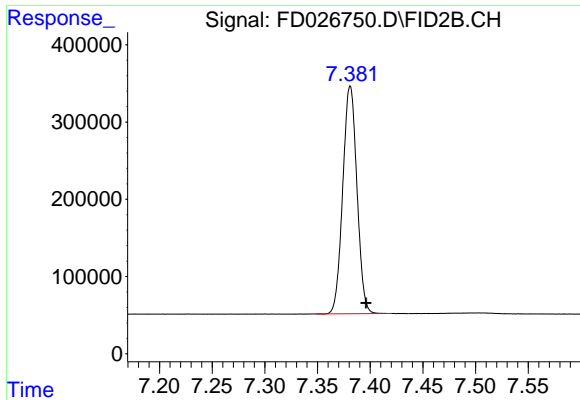
(m)=manual int.

Data Path : Z:\pestpcbsrv\HPCHEM1\FID_D\Data\FD120518AR\
Data File : FD026750.D
Signal(s) : FID2B.CH
Acq On : 05 Dec 2018 19:04
Operator : AJ\SJ
Sample : J6202-01
Misc :
ALS Vial : 56 Sample Multiplier: 1

Integration File: autoint1.e
Quant Time: Dec 06 04:19:44 2018
Quant Method : Z:\pestpcbsrv\HPCHEM1\FID_D\methods\Aromatic EPH 110818.M
Quant Title : GC Extractables
QLast Update : Thu Nov 08 18:15:51 2018
Response via : Initial Calibration
Integrator: ChemStation 6890 Scale Mode: Large solvent peaks clipped

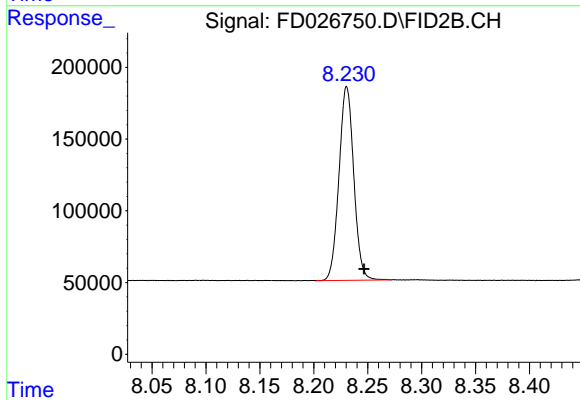
Volume Inj. : 1 µl
Signal Phase : Rxi-1ms
Signal Info : 20M x 0.18mm x 0.18µm





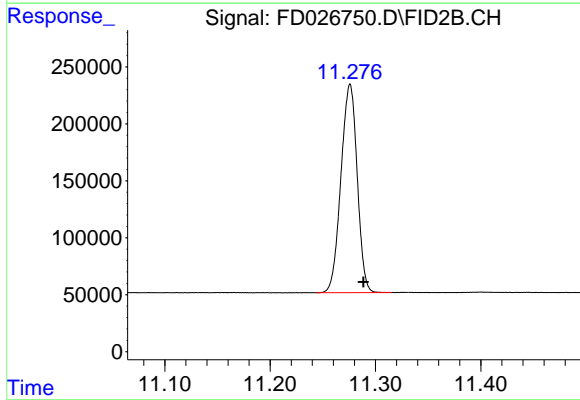
#4 2-Bromonaphthalene (SURR)

R.T.: 7.381 min
Delta R.T.: -0.015 min
Response: 2764700
Conc: 36.41 ug/ml



#6 2-Fluorobiphenyl (SURR)

R.T.: 8.231 min
Delta R.T.: -0.016 min
Response: 1290168
Conc: 24.67 ug/ml



#11 ortho-Terphenyl (SURR)

R.T.: 11.276 min
Delta R.T.: -0.013 min
Response: 1961621
Conc: 23.14 ug/ml