

Data Path : Z:\pestpcbsrv\HPCHEM1\FID_D\Data\FD120621AR\
 Data File : FD039722.D
 Signal(s) : FID2B.CH
 Acq On : 06 Dec 2021 18:33
 Operator : AJ\MA
 Sample : PB141191BS
 Misc :
 ALS Vial : 54 Sample Multiplier: 1

Instrument :
 FID_D
 ClientSampleId :
 PB141191BS

Integration File: autoint1.e
 Quant Time: Dec 07 00:24:03 2021
 Quant Method : Z:\pestpcbsrv\HPCHEM1\FID_D\methods\Aromatic EPH 112321.M
 Quant Title : GC Extractables
 QLast Update : Wed Nov 24 04:30:20 2021
 Response via : Initial Calibration
 Integrator: ChemStation 6890 Scale Mode: Large solvent peaks clipped

Volume Inj. : 1 µl
 Signal Phase : Rxi-1ms
 Signal Info : 20M x 0.18mm x 0.18µm

Compound	R.T.	Response	Conc Units

System Monitoring Compounds			
4) S 2-Bromonaphthalene (S...	7.742	5831205	52.119 ug/ml
Spiked Amount 50.000		Recovery =	104.24%
6) S 2-Fluorobiphenyl (SURR)	8.613	3988072	53.177 ug/ml
Spiked Amount 50.000 Range 0 - 131		Recovery =	106.35%
11) S ortho-Terphenyl (SURR)	11.657	6519232	52.711 ug/ml
Spiked Amount 50.000		Recovery =	105.42%
Target Compounds			
1) T 1,2,3-Trimethylbenzen...	4.531	4440356	35.851 ug/ml
2) T Naphthalene (C11.7)	6.077	5151425	40.283 ug/ml
3) T 2-Methylnaphthalene (...)	7.133	5149336	39.633 ug/ml
5) T Acenaphthylene (C15.06)	8.414	5424121	45.173 ug/ml
7) T Acenaphthene (C15.5)	8.711	5784029	45.418 ug/ml
8) T Fluorene (C16.55)	9.494	5644897	45.954 ug/ml
9) T Phenanthrene (C19.36)	10.897	5828264	48.591 ug/ml
10) T Anthracene (C19.43)	10.973	5771252	48.184 ug/ml
12) T Fluoranthene (C21.85)	12.714	5833753	48.936 ug/ml
13) T Pyrene (C20.8)	13.014	5689746	50.042 ug/ml
14) T Benzo[a]anthracene (C...	14.889	5324396	54.472 ug/ml
15) T Chrysene (C27.41)	14.932	5946945	52.236 ug/ml
16) T benzo[b]fluoranthene ...	16.444	5371688	54.603 ug/ml
17) T Bnezo[k]fluoranthene ...	16.478	5398511	51.014 ug/ml
18) T Benzo[a]pyrene (C31.34)	16.825	5228250	54.248 ug/ml
19) T Indeno[1,2,3-cd]pyren...	18.193	4721677	50.653 ug/ml
20) T Dibenz[a,h]anthracene...	18.228	5111091	49.902 ug/ml
21) T Benzo[g,h,i]perylene ...	18.451	5077808	51.372 ug/ml

(f)=RT Delta > 1/2 Window

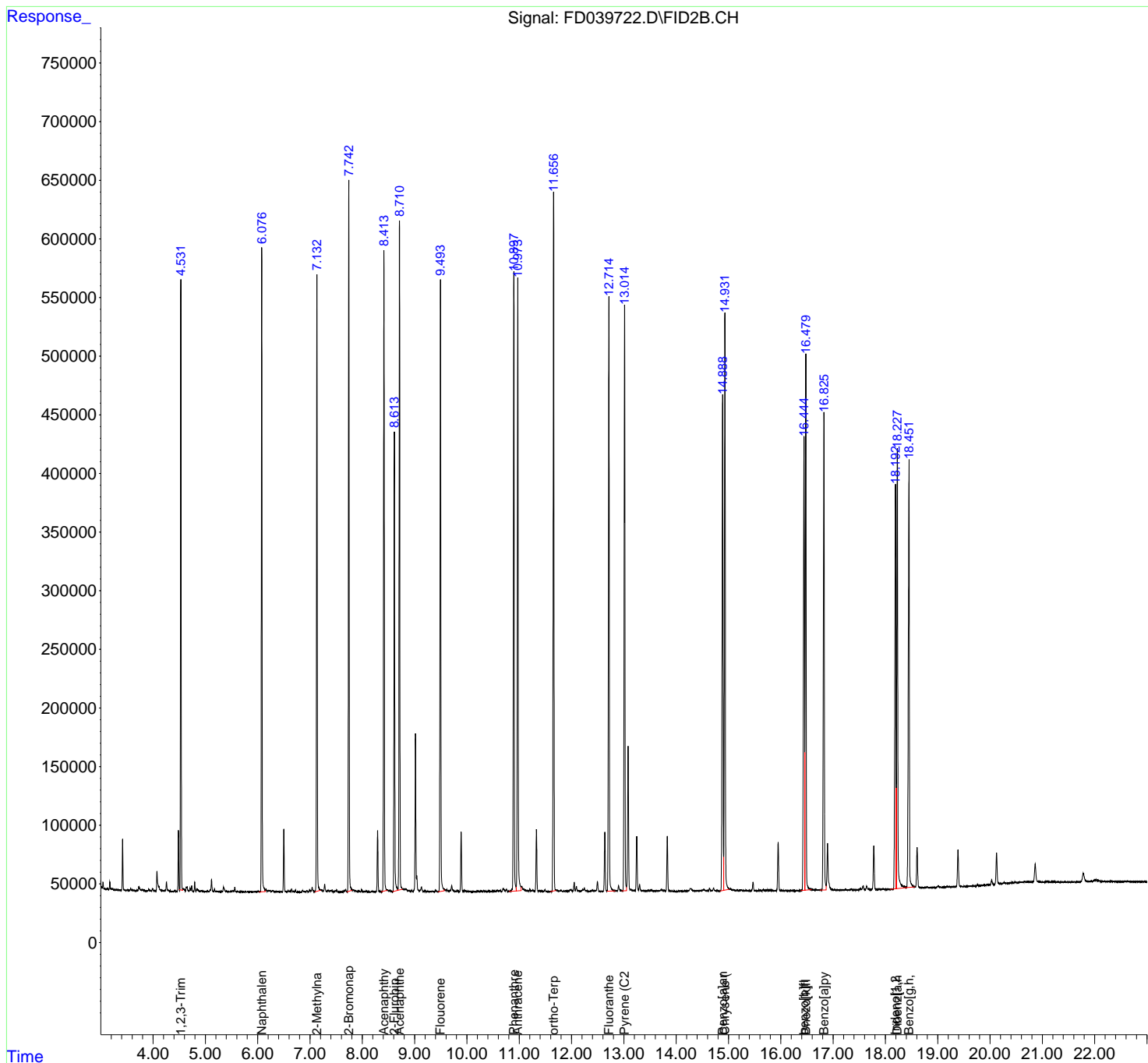
(m)=manual int.

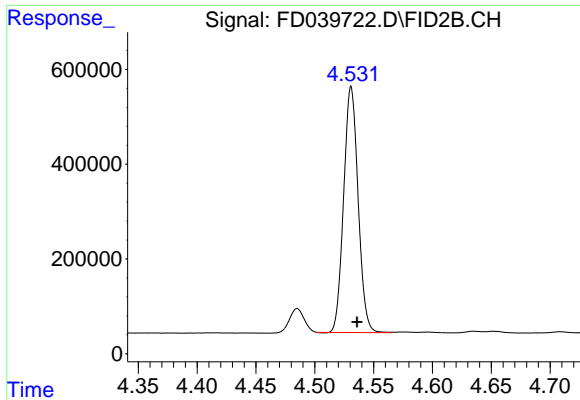
Data Path : Z:\pestpcbsrv\HPCHEM1\FID_D\Data\FD120621AR\
 Data File : FD039722.D
 Signal(s) : FID2B.CH
 Acq On : 06 Dec 2021 18:33
 Operator : AJ\MA
 Sample : PB141191BS
 Misc :
 ALS Vial : 54 Sample Multiplier: 1

Instrument :
 FID_D
 ClientSampleId :
 PB141191BS

Integration File: autoint1.e
 Quant Time: Dec 07 00:24:03 2021
 Quant Method : Z:\pestpcbsrv\HPCHEM1\FID_D\methods\Aromatic EPH 112321.M
 Quant Title : GC Extractables
 QLast Update : Wed Nov 24 04:30:20 2021
 Response via : Initial Calibration
 Integrator: ChemStation 6890 Scale Mode: Large solvent peaks clipped

Volume Inj. : 1 µl
 Signal Phase : Rxi-1ms
 Signal Info : 20M x 0.18mm x 0.18µm

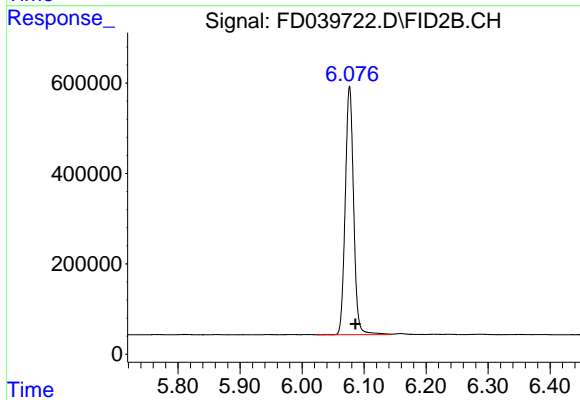




#1 1,2,3-Trimethylbenzene (C10.1)

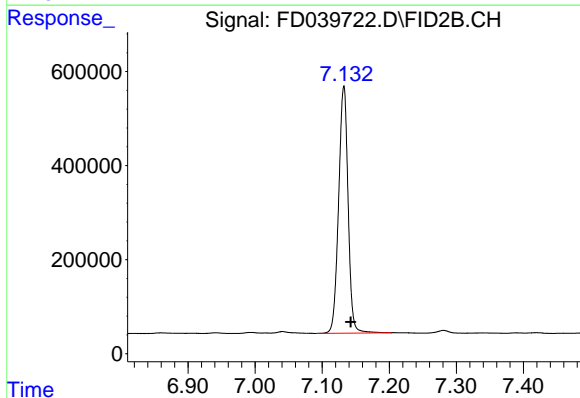
R.T.: 4.531 min
 Delta R.T.: -0.005 min
 Response: 4440356
 Conc: 35.85 ug/ml

Instrument :
 FID_D
 ClientSampleId :
 PB141191BS



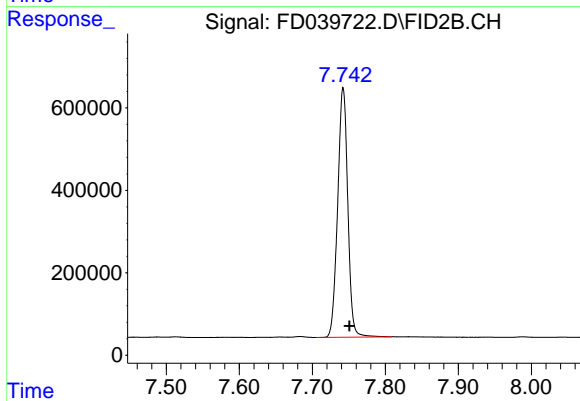
#2 Naphthalene (C11.7)

R.T.: 6.077 min
 Delta R.T.: -0.009 min
 Response: 5151425
 Conc: 40.28 ug/ml



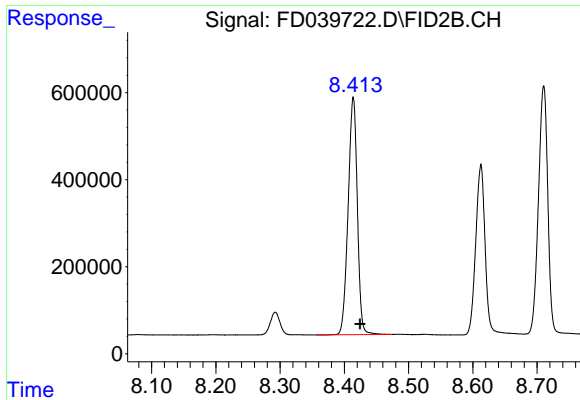
#3 2-Methylnaphthalene (C12.89)

R.T.: 7.133 min
 Delta R.T.: -0.010 min
 Response: 5149336
 Conc: 39.63 ug/ml



#4 2-Bromonaphthalene (SURR)

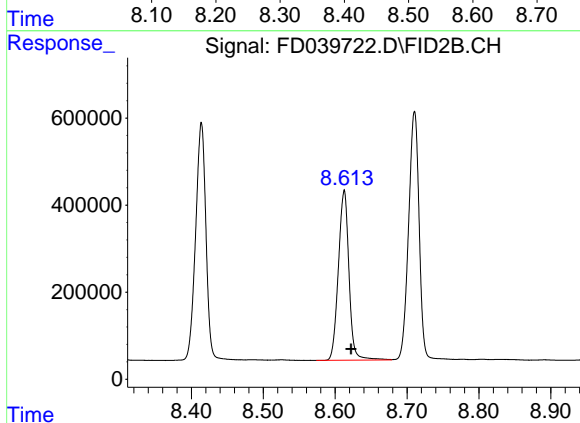
R.T.: 7.742 min
 Delta R.T.: -0.009 min
 Response: 5831205
 Conc: 52.12 ug/ml



#5 Acenaphthylene (C15.06)

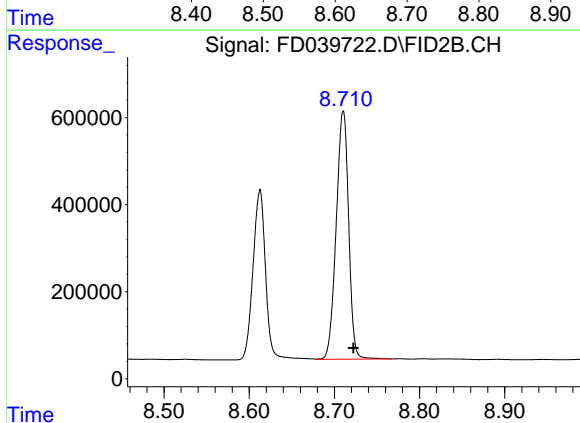
R.T.: 8.414 min
 Delta R.T.: -0.010 min
 Response: 5424121
 Conc: 45.17 ug/ml

Instrument :
 FID_D
 ClientSampleId :
 PB141191BS



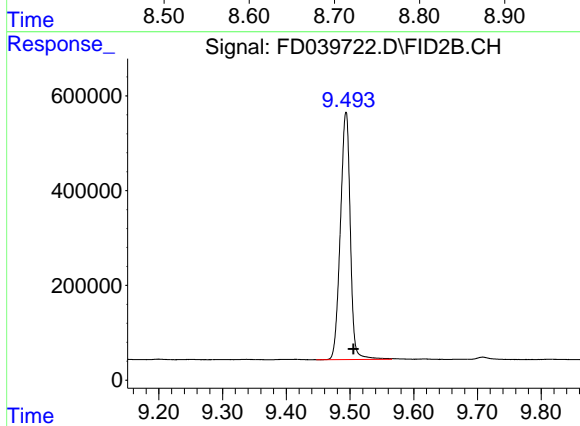
#6 2-Fluorobiphenyl (SURR)

R.T.: 8.613 min
 Delta R.T.: -0.009 min
 Response: 3988072
 Conc: 53.18 ug/ml



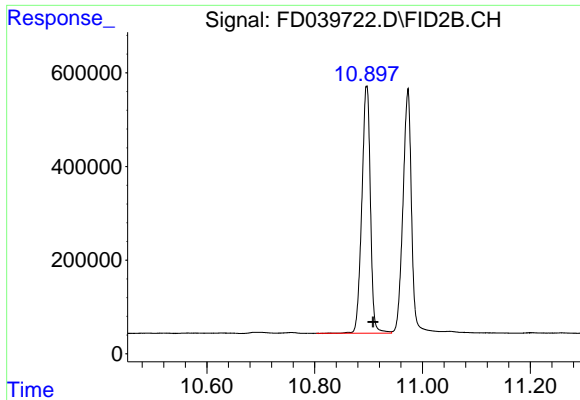
#7 Acenaphthene (C15.5)

R.T.: 8.711 min
 Delta R.T.: -0.012 min
 Response: 5784029
 Conc: 45.42 ug/ml



#8 Fluorene (C16.55)

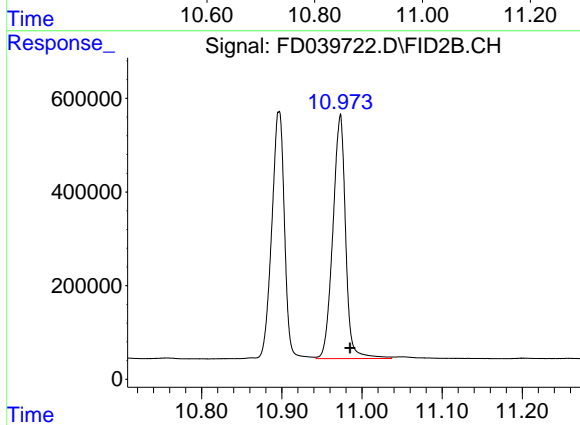
R.T.: 9.494 min
 Delta R.T.: -0.011 min
 Response: 5644897
 Conc: 45.95 ug/ml



#9 Phenanthrene (C19.36)

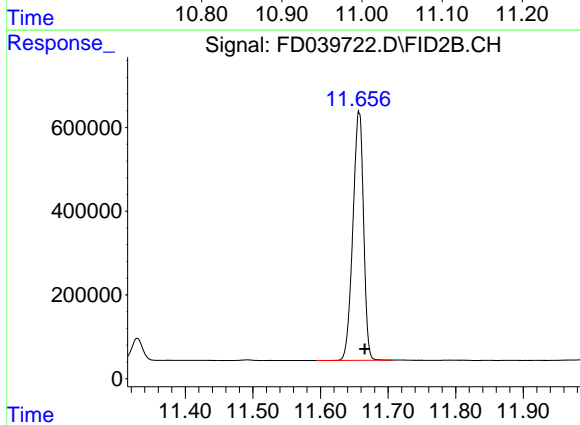
R.T.: 10.897 min
 Delta R.T.: -0.012 min
 Response: 5828264
 Conc: 48.59 ug/ml

Instrument :
 FID_D
 ClientSampleId :
 PB141191BS



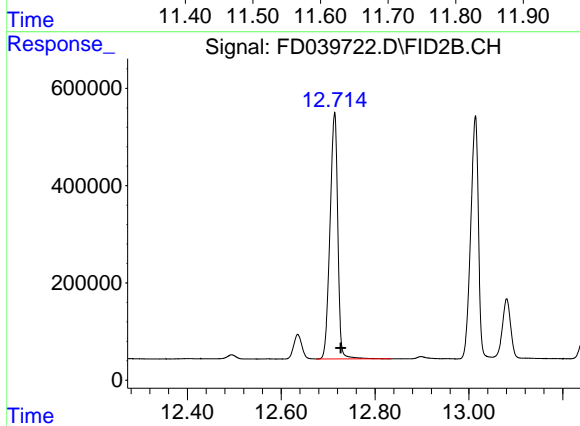
#10 Anthracene (C19.43)

R.T.: 10.973 min
 Delta R.T.: -0.012 min
 Response: 5771252
 Conc: 48.18 ug/ml



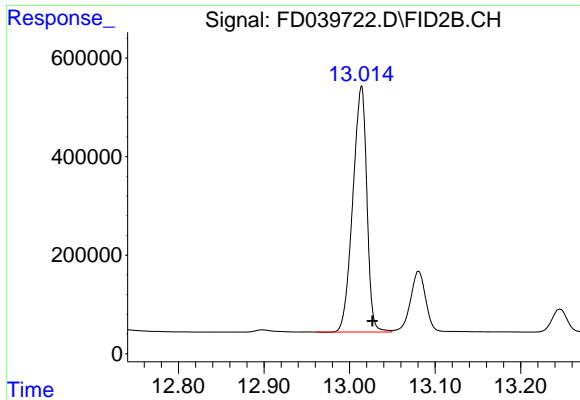
#11 ortho-Terphenyl (SURR)

R.T.: 11.657 min
 Delta R.T.: -0.008 min
 Response: 6519232
 Conc: 52.71 ug/ml



#12 Fluoranthene (C21.85)

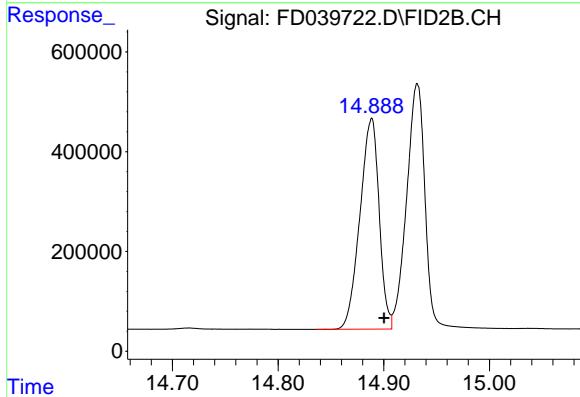
R.T.: 12.714 min
 Delta R.T.: -0.013 min
 Response: 5833753
 Conc: 48.94 ug/ml



#13 Pyrene (C20.8)

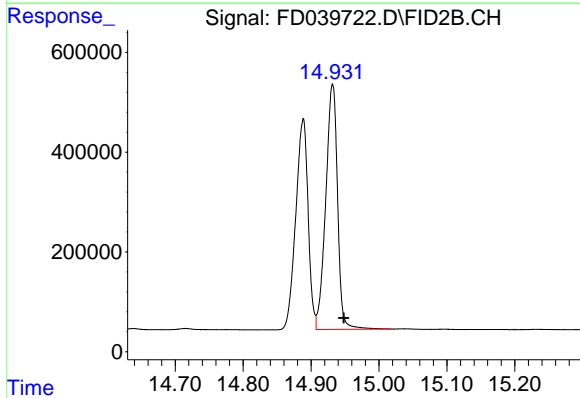
R.T.: 13.014 min
Delta R.T.: -0.013 min
Response: 5689746
Conc: 50.04 ug/ml

Instrument :
FID_D
ClientSampleId :
PB141191BS



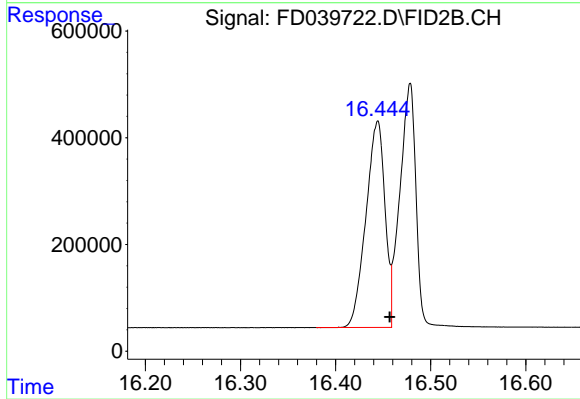
#14 Benzo[a]anthracene (C26.37)

R.T.: 14.889 min
Delta R.T.: -0.012 min
Response: 5324396
Conc: 54.47 ug/ml



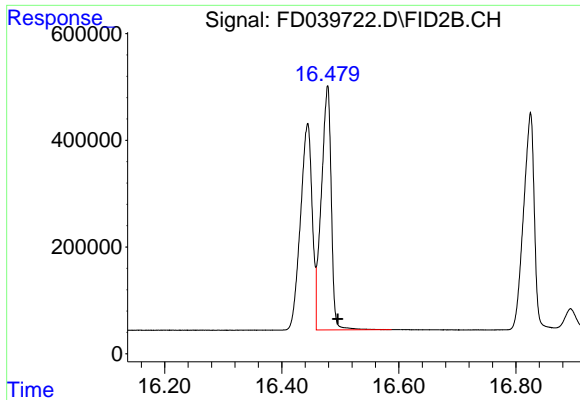
#15 Chrysene (C27.41)

R.T.: 14.932 min
Delta R.T.: -0.017 min
Response: 5946945
Conc: 52.24 ug/ml



#16 benzo[b]fluoranthene (C30.41)

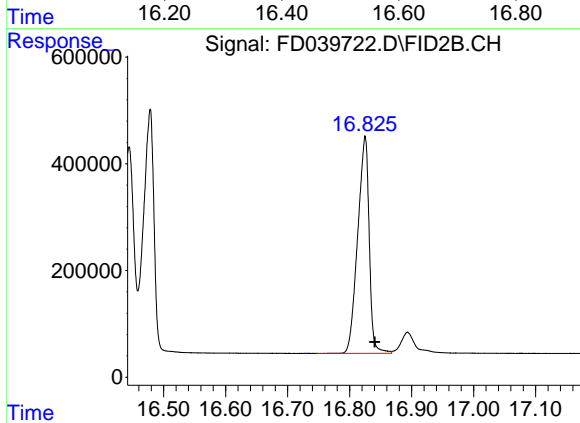
R.T.: 16.444 min
Delta R.T.: -0.013 min
Response: 5371688
Conc: 54.60 ug/ml



#17 Bnezo[k]fluoranthene (C30.14)

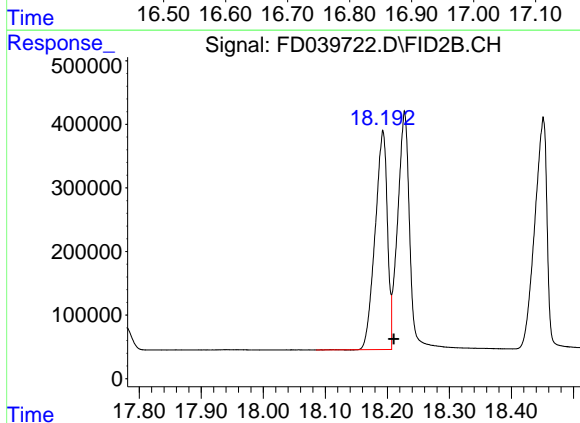
R.T.: 16.478 min
 Delta R.T.: -0.017 min
 Response: 5398511
 Conc: 51.01 ug/ml

Instrument :
 FID_D
 ClientSampleId :
 PB141191BS



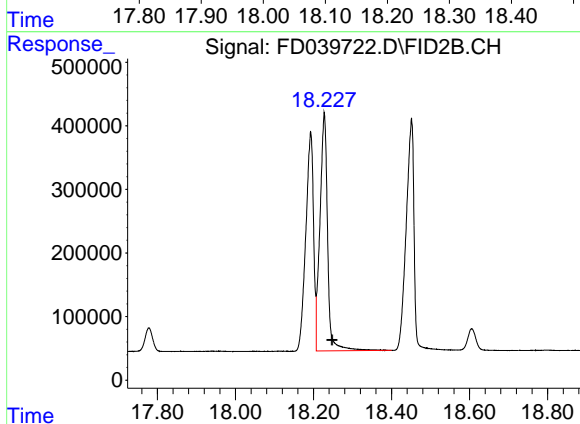
#18 Benzo[a]pyrene (C31.34)

R.T.: 16.825 min
 Delta R.T.: -0.015 min
 Response: 5228250
 Conc: 54.25 ug/ml



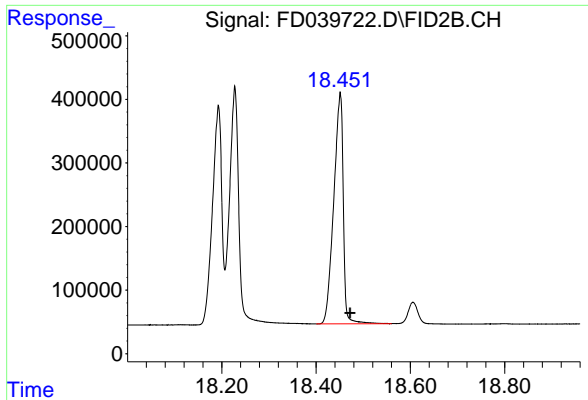
#19 Indeno[1,2,3-cd]pyrene (C35.01)

R.T.: 18.193 min
 Delta R.T.: -0.017 min
 Response: 4721677
 Conc: 50.65 ug/ml



#20 Dibenz[a,h]anthracene (C30.36)

R.T.: 18.228 min
 Delta R.T.: -0.020 min
 Response: 5111091
 Conc: 49.90 ug/ml



#21 Benzo[g,h,i]perylene (C34.01)

R.T.: 18.451 min
Delta R.T.: -0.021 min
Response: 5077808
Conc: 51.37 ug/ml

Instrument :
FID_D
ClientSampleId :
PB141191BS