

Data Path : Z:\pestpcbsrv\HPCHEM1\FID_D\Data\FD120924AR\
Data File : FD048858.D
Signal(s) : FID2B.ch
Acq On : 09 Dec 2024 18:44
Operator : YP/AJ
Sample : I.BLK
Misc :
ALS Vial : 51 Sample Multiplier: 1

Instrument :
FID_D
ClientSampleId :
I.BLK

Integration File: autoint1.e
Quant Time: Dec 10 06:18:44 2024
Quant Method : Z:\pestpcbsrv\HPCHEM1\FID_D\methods\Aromatic EPH 111424.M
Quant Title : GC Extractables
QLast Update : Thu Nov 14 14:16:25 2024
Response via : Initial Calibration
Integrator: ChemStation

Volume Inj. : 1 µl
Signal Phase : Rxi-1ms
Signal Info : 20M x 0.18mm x 0.18µm

Compound	R.T.	Response	Conc Units

System Monitoring Compounds			
Target Compounds			

(f)=RT Delta > 1/2 Window

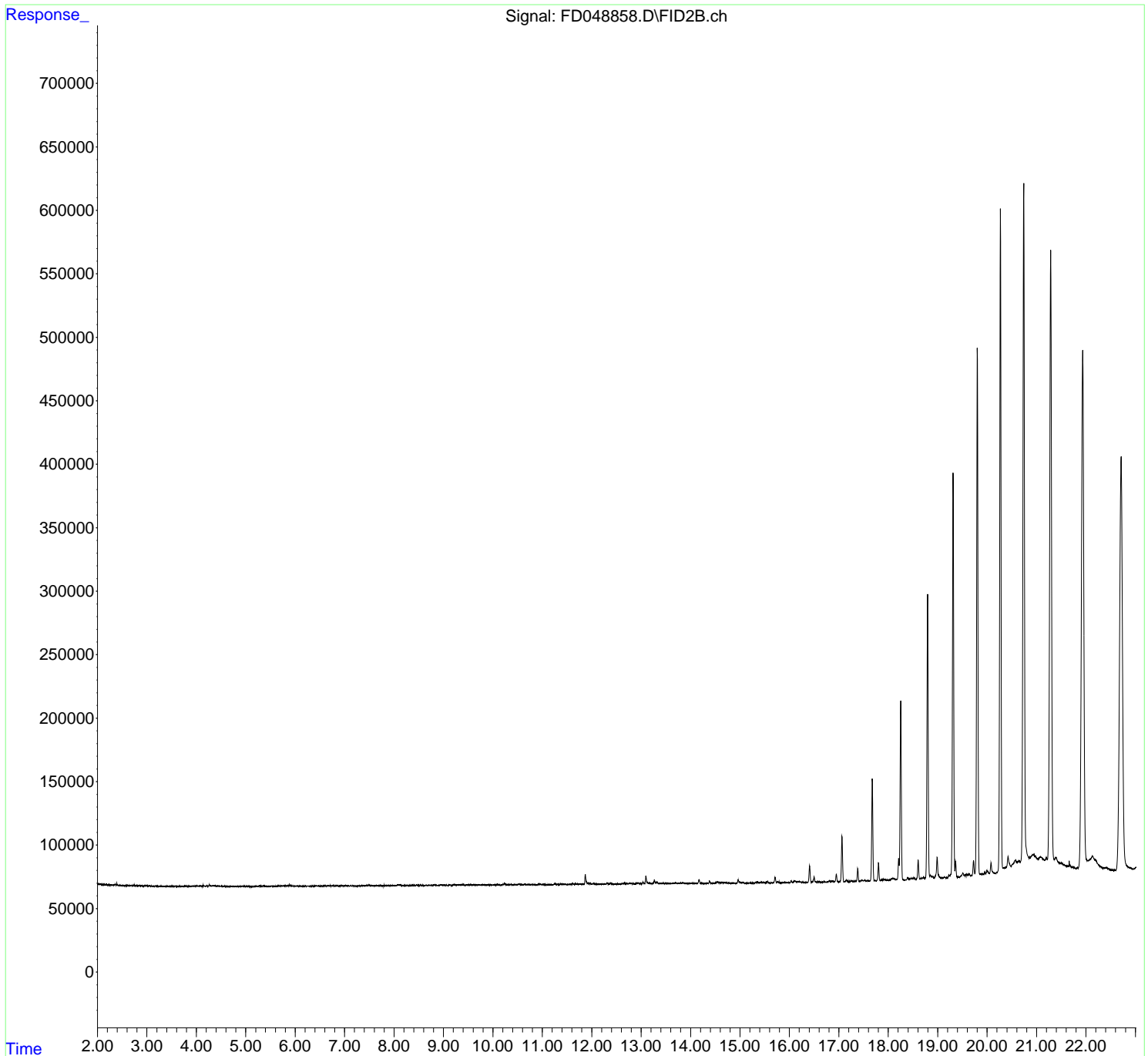
(m)=manual int.

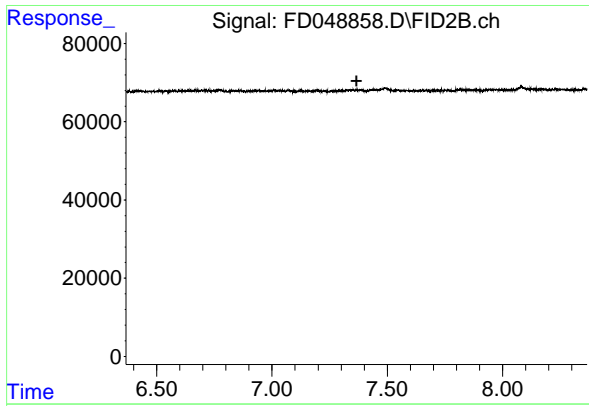
Data Path : Z:\pestpcbsrv\HPCHEM1\FID_D\Data\FD120924AR\
Data File : FD048858.D
Signal(s) : FID2B.ch
Acq On : 09 Dec 2024 18:44
Operator : YP/AJ
Sample : I.BLK
Misc :
ALS Vial : 51 Sample Multiplier: 1

Instrument :
FID_D
ClientSampleId :
I.BLK

Integration File: autoint1.e
Quant Time: Dec 10 06:18:44 2024
Quant Method : Z:\pestpcbsrv\HPCHEM1\FID_D\methods\Aromatic EPH 111424.M
Quant Title : GC Extractables
QLast Update : Thu Nov 14 14:16:25 2024
Response via : Initial Calibration
Integrator: ChemStation

Volume Inj. : 1 µl
Signal Phase : Rxi-1ms
Signal Info : 20M x 0.18mm x 0.18µm

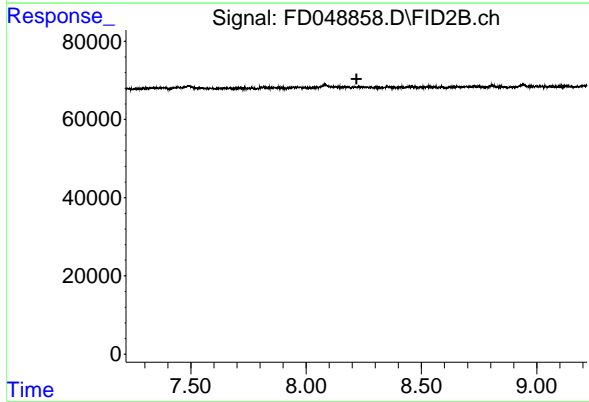




#4 2-Bromonaphthalene (SURR)

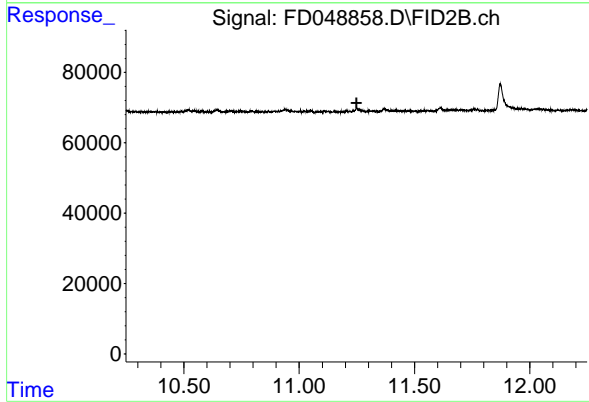
R.T.: 0.000 min
 Exp R.T.: 7.366 min
 Response: 0
 Conc: N.D.

Instrument :
 FID_D
 ClientSampleId :
 I.BLK



#6 2-Fluorobiphenyl (SURR)

R.T.: 0.000 min
 Exp R.T.: 8.218 min
 Response: 0
 Conc: N.D.



#11 ortho-Terphenyl (SURR)

R.T.: 0.000 min
 Exp R.T.: 11.249 min
 Response: 0
 Conc: N.D.