

Data Path : Z:\pestpcbsrv\HPCHEM1\FID_D\Data\FD121218AL\
 Data File : FD026877.D
 Signal(s) : FID2B.CH
 Acq On : 13 Dec 2018 11:23
 Operator : AJ\SJ
 Sample : I.BLK
 Misc :
 ALS Vial : 51 Sample Multiplier: 1

Integration File: sample.E
 Quant Time: Dec 13 12:37:26 2018
 Quant Method : Z:\pestpcbsrv\HPCHEM1\FID_D\methods\Alaphatic EPH 111518.M
 Quant Title : GC Extractables
 QLast Update : Fri Nov 16 08:39:32 2018
 Response via : Initial Calibration
 Integrator: ChemStation 6890 Scale Mode: Large solvent peaks clipped

Volume Inj. : 1 ul
 Signal Phase : Rxi-1ms
 Signal Info : 20M x 0.18mm x 0.18um

Compound	R.T.	Response	Conc Units

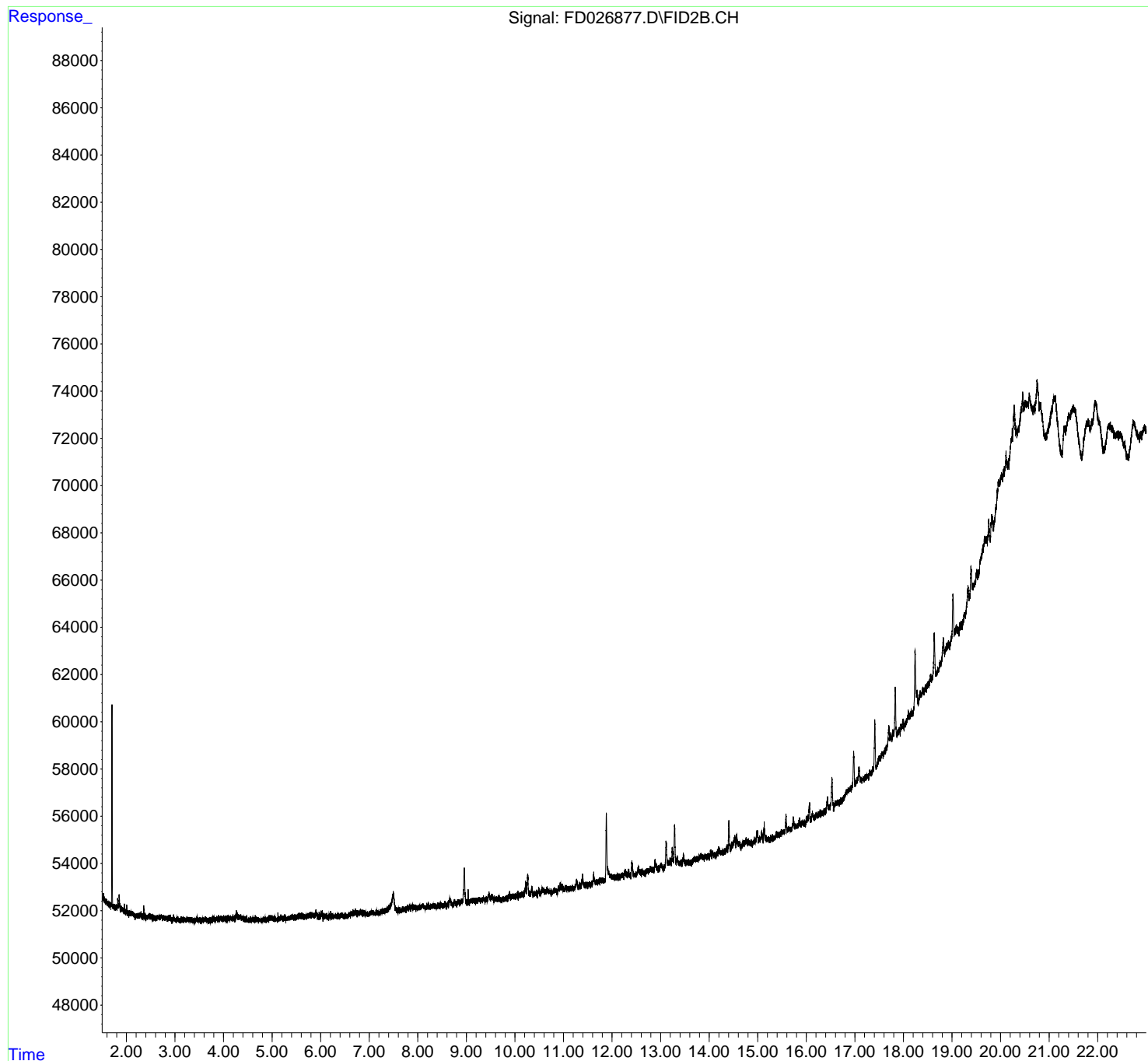
System Monitoring Compounds			
Target Compounds			

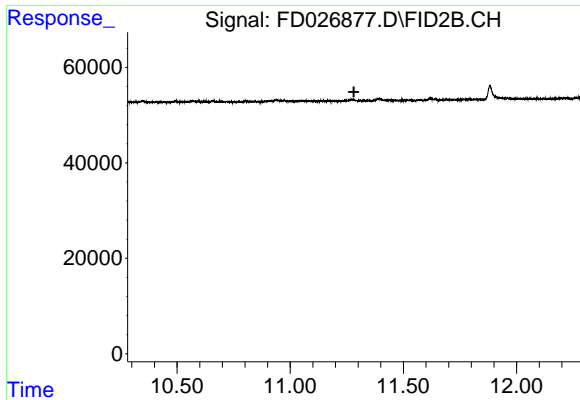
(f)=RT Delta > 1/2 Window (m)=manual int.

Data Path : Z:\pestpcbsrv\HPCHEM1\FID_D\Data\FD121218AL\
Data File : FD026877.D
Signal(s) : FID2B.CH
Acq On : 13 Dec 2018 11:23
Operator : AJ\SJ
Sample : I.BLK
Misc :
ALS Vial : 51 Sample Multiplier: 1

Integration File: sample.E
Quant Time: Dec 13 12:37:26 2018
Quant Method : Z:\pestpcbsrv\HPCHEM1\FID_D\methods\Alaphatic EPH 111518.M
Quant Title : GC Extractables
QLast Update : Fri Nov 16 08:39:32 2018
Response via : Initial Calibration
Integrator: ChemStation 6890 Scale Mode: Large solvent peaks clipped

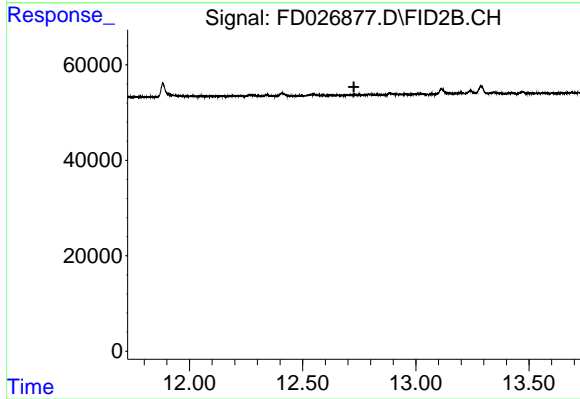
Volume Inj. : 1 ul
Signal Phase : Rxi-1ms
Signal Info : 20M x 0.18mm x 0.18um





#9 ortho-Terphenyl (SURR)

R.T.: 0.000 min
Exp R.T. : 11.281 min
Response: 0
Conc: N.D.



#12 1-chlorooctadecane (SURR)

R.T.: 0.000 min
Exp R.T. : 12.726 min
Response: 0
Conc: N.D.