

Data Path : Z:\pestpcbsrv\HPCHEM1\FID_D\Data\FD121318AL\
 Data File : FD026888.D
 Signal(s) : FID2B.CH
 Acq On : 13 Dec 2018 21:07
 Operator : AJ\SJ
 Sample : 50 PPM ALIPHATIC HC STD2
 Misc :
 ALS Vial : 56 Sample Multiplier: 1

Instrument :
 FID_D
 ClientSampleId :
 50 PPM ALIPHATIC HC STD2

Manual Integrations
 APPROVED

Sohil
 12/14/2018 2:11:55 PM

Integration File: autoint1.e
 Quant Time: Dec 14 04:02:28 2018
 Quant Method : Z:\pestpcbsrv\HPCHEM1\FID_D\methods\Alaphatic EPH 121318.M
 Quant Title : GC Extractables
 QLast Update : Fri Dec 14 03:50:00 2018
 Response via : Initial Calibration
 Integrator: ChemStation 6890 Scale Mode: Large solvent peaks clipped

Volume Inj. : 1 ul
 Signal Phase : Rxi-1ms
 Signal Info : 20M x 0.18mm x 0.18um

Compound	R.T.	Response	Conc Units
System Monitoring Compounds			
9) S ortho-Terphenyl (SURR)	11.272	5152199	51.468 ug/ml
Spiked Amount	50.000	Recovery =	102.94%
12) S 1-chlorooctadecane (S...	12.716	3912755	51.588 ug/ml
Spiked Amount	50.000	Recovery =	103.18%
Target Compounds			
1) T n-Nonane (C9)	3.091	4505330	51.521 ug/ml
2) T n-Decane (C10)	4.153	4624704	51.543 ug/ml
3) T A~Naphthalene (C11.7)	5.711	5333390	51.383 ug/ml
4) T n-Dodecane (C12)	6.164	4681104	51.434 ug/ml
5) T A~2-methylnaphthalene...	6.763	5348404	51.357 ug/ml
6) T n-Tetradecane (C14)	7.948	4706486	51.345 ug/ml
7) T n-Hexadecane (C16)	9.541	4639063	51.335 ug/ml
8) T n-Octadecane (C18)	10.975	4552676	51.424 ug/ml
10) T n-Eicosane (C20)	12.279	4530115	51.582 ug/ml
11) T n-Heneicosane (C21)	12.887	4489134	51.604 ug/ml
13) T n-Docosane (C22)	13.471	4477775	51.666 ug/ml
14) T n-Tetracosane (C24)	14.569	4457174	51.631 ug/ml
15) T n-Hexacosane (C26)	15.585	4423279	51.607 ug/ml
16) T n-Octacosane (C28)	16.531	4412775	51.549 ug/ml
17) T n-Tricontane (C30)	17.415	4302497	51.551 ug/ml
18) T n-Dotriacontane (C32)	18.242	3977998	51.517 ug/ml
19) T n-Tetratriacontane (C34)	19.021	3488562	51.585 ug/ml
20) T n-Hexatriacontane (C36)	19.757	3173572	51.589 ug/ml
21) T n-Octatriacontane (C38)	20.456	3057800	51.619 ug/ml
22) T n-Tetracontane (C40)	21.246	2991180	51.889 ug/ml

(f)=RT Delta > 1/2 Window

(m)=manual int.

Data Path : Z:\pestpcbsrv\HPCHEM1\FID_D\Data\FD121318AL\
 Data File : FD026888.D
 Signal(s) : FID2B.CH
 Acq On : 13 Dec 2018 21:07
 Operator : AJ\SJ
 Sample : 50 PPM ALIPHATIC HC STD2
 Misc :
 ALS Vial : 56 Sample Multiplier: 1

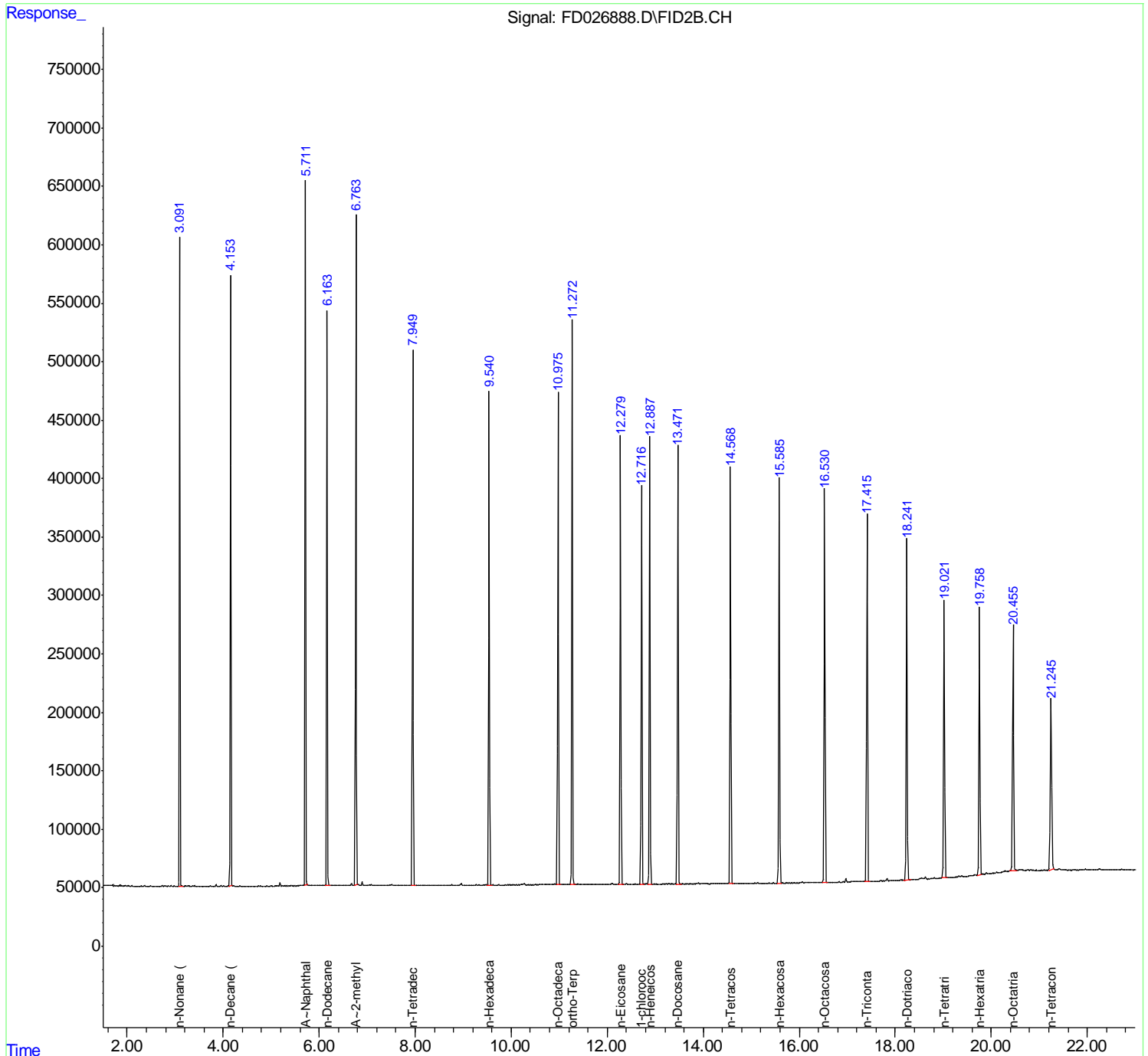
Instrument :
 FID_D
Client Sampled :
 50 PPM ALIPHATIC HC STD2

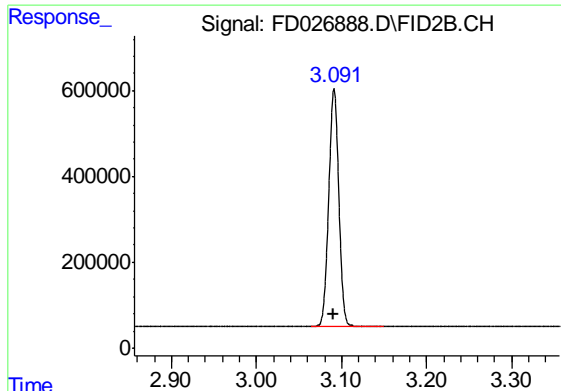
Manual Integrations
APPROVED

Sohil
 12/14/2018 2:11:55 PM

Integration File: autoint1.e
 Quant Time: Dec 14 04:02:28 2018
 Quant Method : Z:\pestpcbsrv\HPCHEM1\FID_D\methods\Aliphatic EPH 121318.M
 Quant Title : GC Extractables
 QLast Update : Fri Dec 14 03:50:00 2018
 Response via : Initial Calibration
 Integrator: ChemStation 6890 Scale Mode: Large solvent peaks clipped

Volume Inj. : 1 ul
 Signal Phase : Rxi-1ms
 Signal Info : 20M x 0.18mm x 0.18um





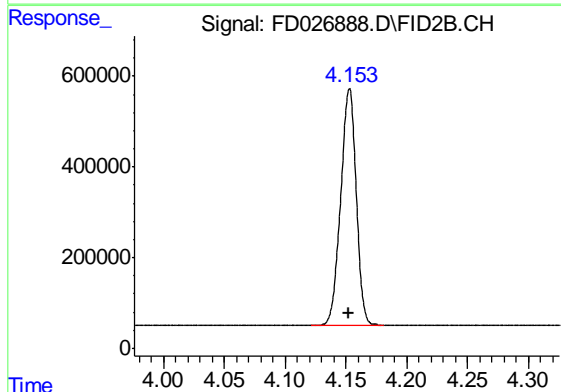
#1 n-Nonane (C9)

R.T.: 3.091 min
 Delta R.T.: 0.000 min
 Response: 4505330
 Conc: 51.52 ug/ml

Instrument :
 FID_D
 ClientSampled :
 50 PPM ALIPHATIC HC STD2

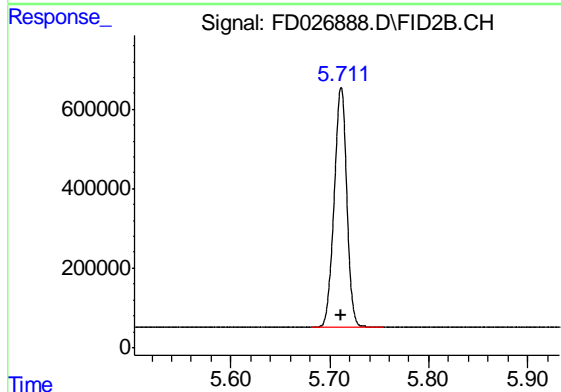
Manual Integrations
 APPROVED

Sohil
 12/14/2018 2:11:55 PM



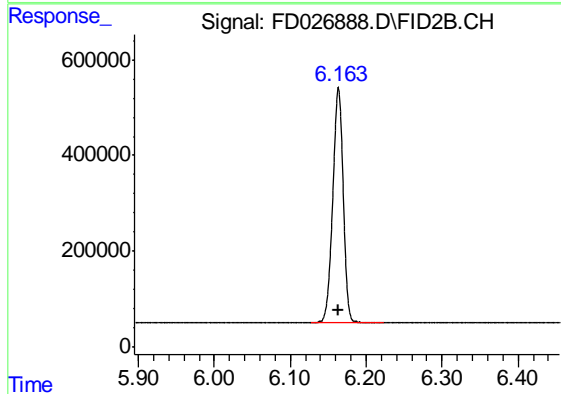
#2 n-Decane (C10)

R.T.: 4.153 min
 Delta R.T.: 0.000 min
 Response: 4624704
 Conc: 51.54 ug/ml



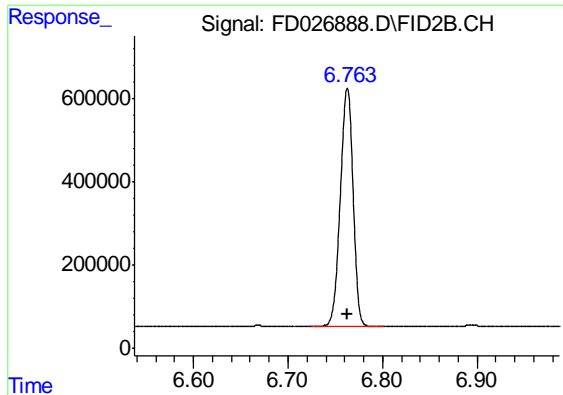
#3 A-Naphthalene (C11.7)

R.T.: 5.711 min
 Delta R.T.: 0.000 min
 Response: 5333390
 Conc: 51.38 ug/ml



#4 n-Dodecane (C12)

R.T.: 6.164 min
 Delta R.T.: 0.000 min
 Response: 4681104
 Conc: 51.43 ug/ml



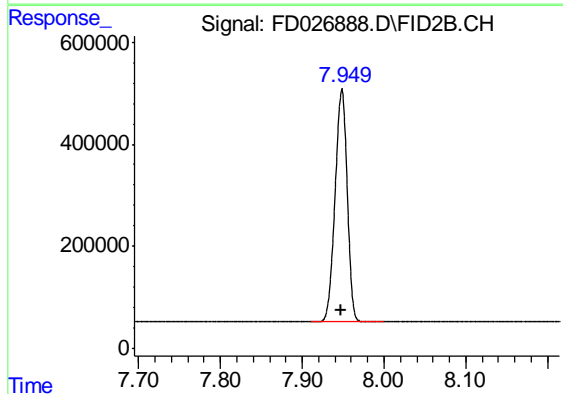
#5 A~2-methylnaphthalene (C12.89)

R.T.: 6.763 min
 Delta R.T.: 0.000 min
 Response: 5348404
 Conc: 51.36 ug/ml

Instrument :
 FID_D
 ClientSampleId :
 50 PPM ALIPHATIC HC STD2

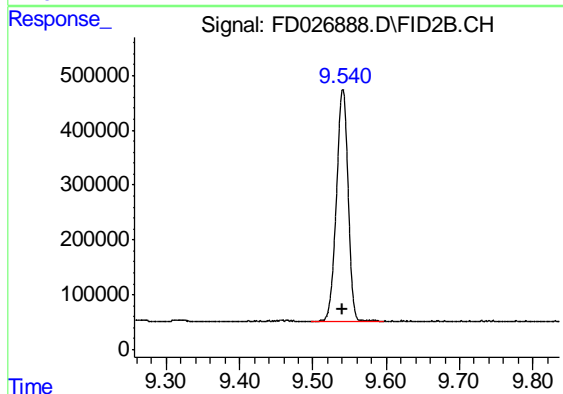
Manual Integrations
 APPROVED

Sohil
 12/14/2018 2:11:55 PM



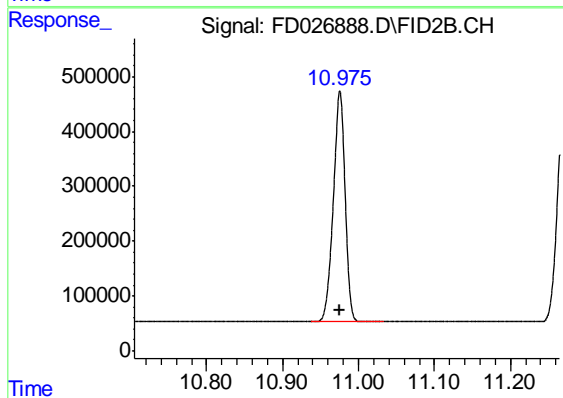
#6 n-Tetradecane (C14)

R.T.: 7.948 min
 Delta R.T.: 0.000 min
 Response: 4706486
 Conc: 51.34 ug/ml



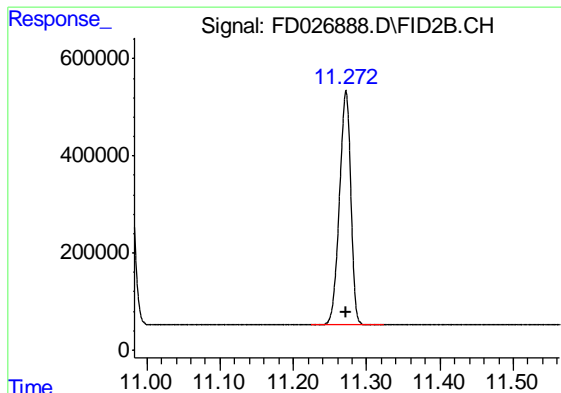
#7 n-Hexadecane (C16)

R.T.: 9.541 min
 Delta R.T.: 0.000 min
 Response: 4639063
 Conc: 51.34 ug/ml



#8 n-Octadecane (C18)

R.T.: 10.975 min
 Delta R.T.: 0.000 min
 Response: 4552676
 Conc: 51.42 ug/ml



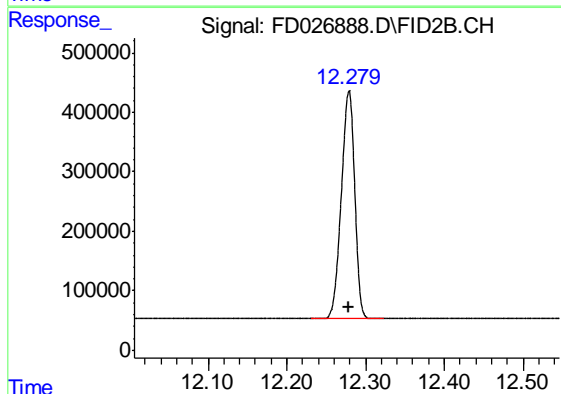
#9 ortho-Terphenyl (SURR)

R.T.: 11.272 min
 Delta R.T.: 0.000 min
 Response: 5152199
 Conc: 51.47 ug/ml

Instrument :
 FID_D
 ClientSampled :
 50 PPM ALIPHATIC HC STD2

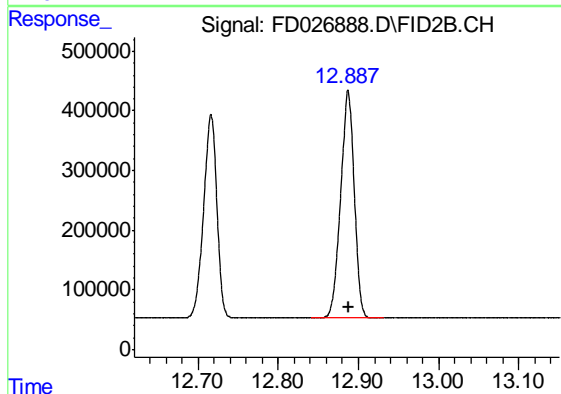
Manual Integrations
 APPROVED

Sohil
 12/14/2018 2:11:55 PM



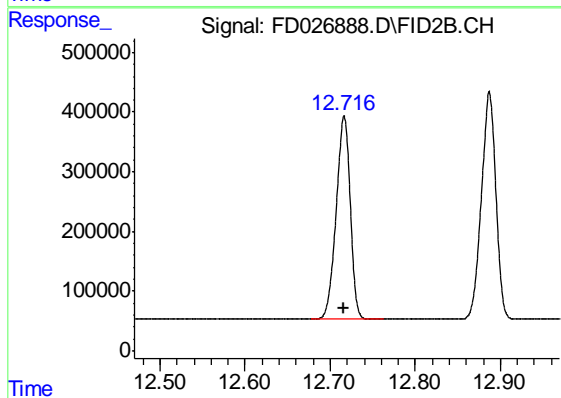
#10 n-Eicosane (C20)

R.T.: 12.279 min
 Delta R.T.: 0.000 min
 Response: 4530115
 Conc: 51.58 ug/ml



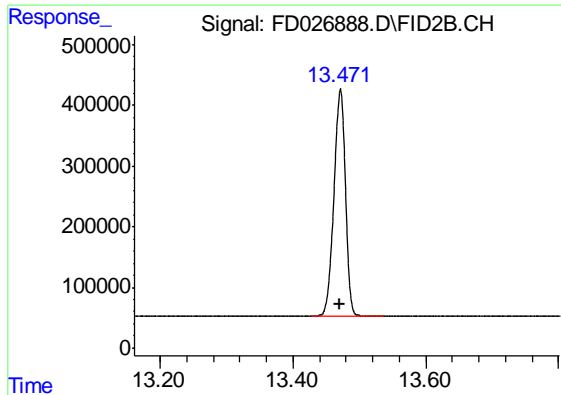
#11 n-Heneicosane (C21)

R.T.: 12.887 min
 Delta R.T.: 0.000 min
 Response: 4489134
 Conc: 51.60 ug/ml



#12 1-chlorooctadecane (SURR)

R.T.: 12.716 min
 Delta R.T.: 0.000 min
 Response: 3912755
 Conc: 51.59 ug/ml



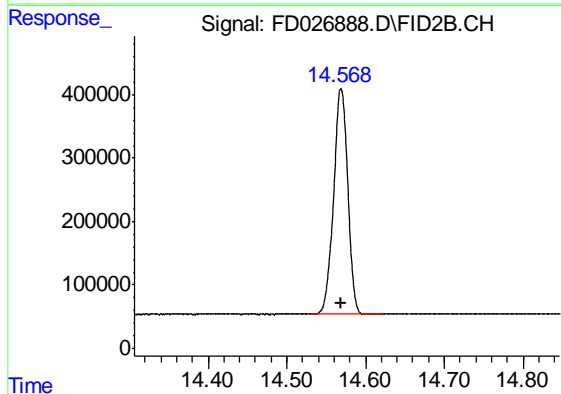
#13 n-Docosane (C22)

R.T.: 13.471 min
Delta R.T.: 0.000 min
Response: 4477775
Conc: 51.67 ug/ml

Instrument :
FID_D
ClientSampleId :
50 PPM ALIPHATIC HC STD2

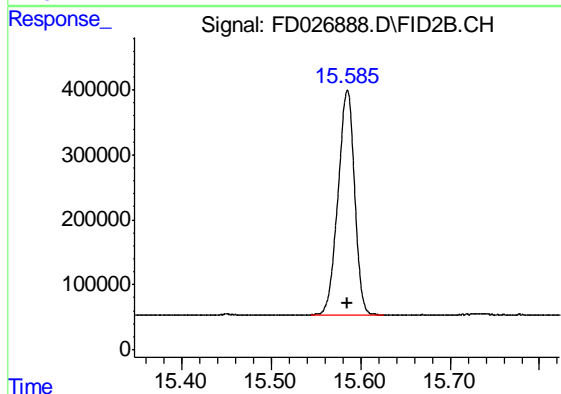
Manual Integrations
APPROVED

Sohil
12/14/2018 2:11:55 PM



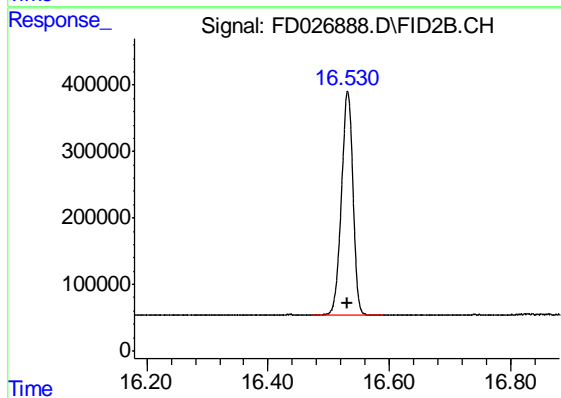
#14 n-Tetracosane (C24)

R.T.: 14.569 min
Delta R.T.: 0.000 min
Response: 4457174
Conc: 51.63 ug/ml



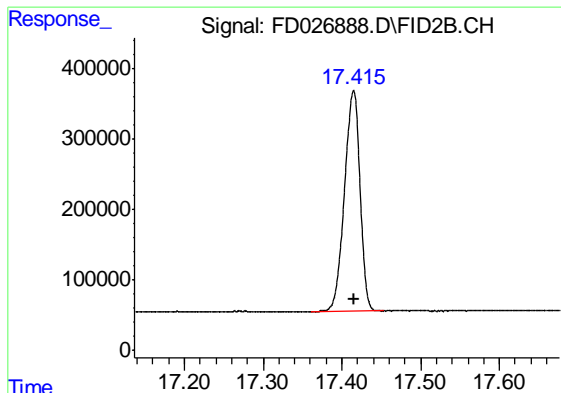
#15 n-Hexacosane (C26)

R.T.: 15.585 min
Delta R.T.: 0.000 min
Response: 4423279
Conc: 51.61 ug/ml m



#16 n-Octacosane (C28)

R.T.: 16.531 min
Delta R.T.: 0.000 min
Response: 4412775
Conc: 51.55 ug/ml



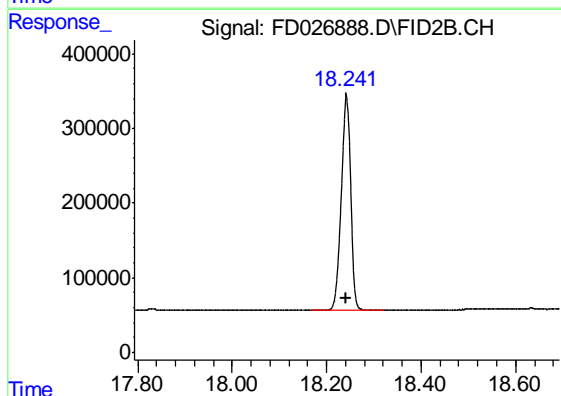
#17 n-Tricontane (C30)

R.T.: 17.415 min
Delta R.T.: 0.000 min
Response: 4302497
Conc: 51.55 ug/ml

Instrument :
FID_D
ClientSampleId :
50 PPM ALIPHATIC HC STD2

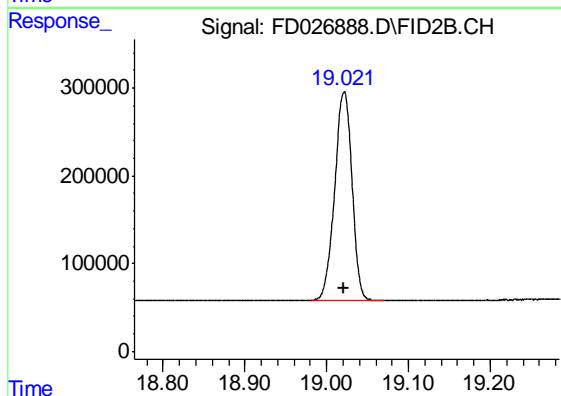
Manual Integrations
APPROVED

Sohil
12/14/2018 2:11:55 PM



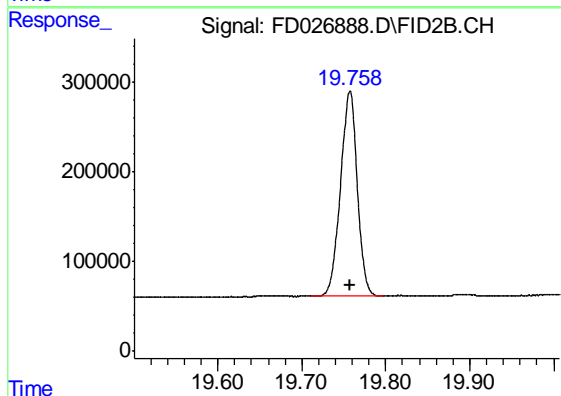
#18 n-Dotriacontane (C32)

R.T.: 18.242 min
Delta R.T.: 0.000 min
Response: 3977998
Conc: 51.52 ug/ml



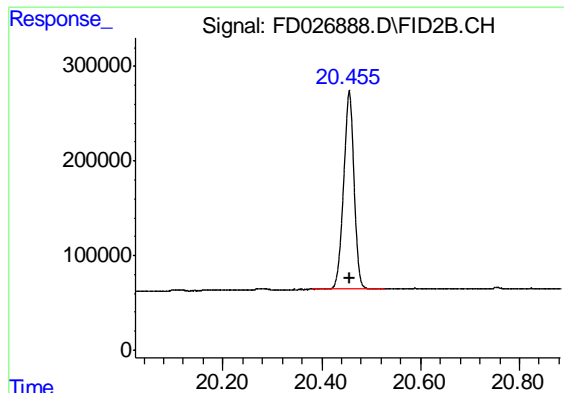
#19 n-Tetatriacontane (C34)

R.T.: 19.021 min
Delta R.T.: 0.000 min
Response: 3488562
Conc: 51.59 ug/ml



#20 n-Hexatriacontane (C36)

R.T.: 19.757 min
Delta R.T.: 0.000 min
Response: 3173572
Conc: 51.59 ug/ml



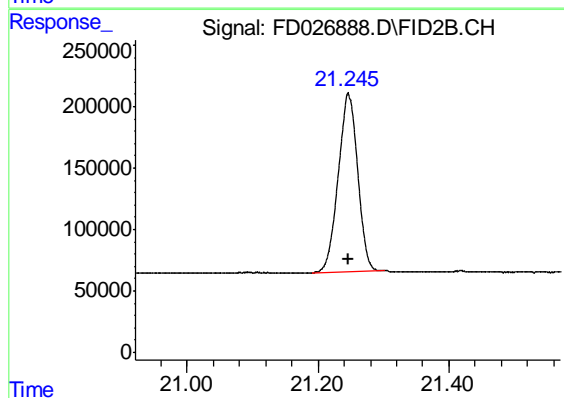
#21 n-Octatriacontane (C38)

R.T.: 20.456 min
Delta R.T.: 0.000 min
Response: 3057800
Conc: 51.62 ug/ml

Instrument :
FID_D
ClientSampleId :
50 PPM ALIPHATIC HC STD2

Manual Integrations
APPROVED

Sohil
12/14/2018 2:11:55 PM



#22 n-Tetracontane (C40)

R.T.: 21.246 min
Delta R.T.: 0.000 min
Response: 2991180
Conc: 51.89 ug/ml