

Data Path : Z:\pestpcbsrv\HPCHEM1\FID_D\Data\FD121420AL\
 Data File : FD035771.D
 Signal(s) : FID2B.CH
 Acq On : 14 Dec 2020 10:38
 Operator : DD\AJ
 Sample : PB133581BL
 Misc :
 ALS Vial : 53 Sample Multiplier: 1

Integration File: autoint1.e
 Quant Time: Dec 15 03:08:02 2020
 Quant Method : Z:\pestpcbsrv\HPCHEM1\FID_D\methods\Alaphatic EPH 112720.M
 Quant Title : GC Extractables
 QLast Update : Sat Nov 28 05:38:14 2020
 Response via : Initial Calibration
 Integrator: ChemStation 6890 Scale Mode: Large solvent peaks clipped

Volume Inj. : 1 ul
 Signal Phase : Rxi-1ms
 Signal Info : 20M x 0.18mm x 0.18um

Compound	R.T.	Response	Conc Units

System Monitoring Compounds			
9) S ortho-Terphenyl (SURR)	11.493	5832036	41.760 ug/ml
Spiked Amount	50.000	Recovery	= 83.52%
12) S 1-chlorooctadecane (S...	12.924	4647326	41.450 ug/ml
Spiked Amount	50.000	Recovery	= 82.90%

Target Compounds

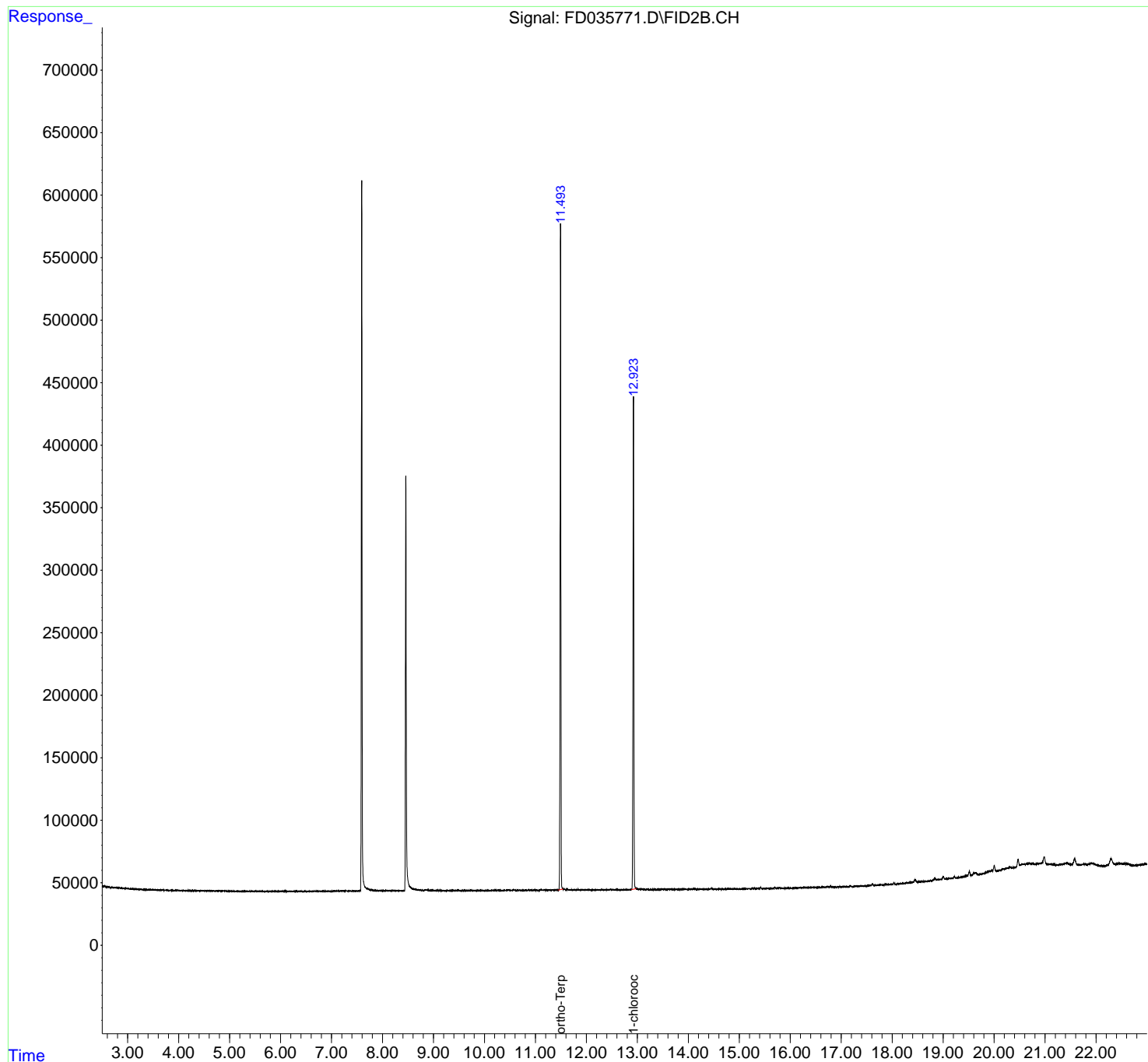
(f)=RT Delta > 1/2 Window

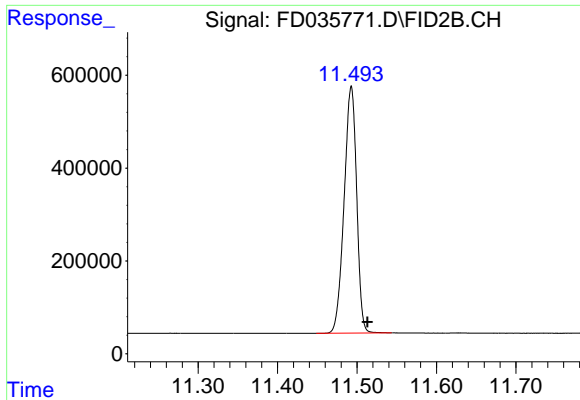
(m)=manual int.

Data Path : Z:\pestpcbsrv\HPCHEM1\FID_D\Data\FD121420AL\
Data File : FD035771.D
Signal(s) : FID2B.CH
Acq On : 14 Dec 2020 10:38
Operator : DD\AJ
Sample : PB133581BL
Misc :
ALS Vial : 53 Sample Multiplier: 1

Integration File: autoint1.e
Quant Time: Dec 15 03:08:02 2020
Quant Method : Z:\pestpcbsrv\HPCHEM1\FID_D\methods\Alaphatic EPH 112720.M
Quant Title : GC Extractables
QLast Update : Sat Nov 28 05:38:14 2020
Response via : Initial Calibration
Integrator: ChemStation 6890 Scale Mode: Large solvent peaks clipped

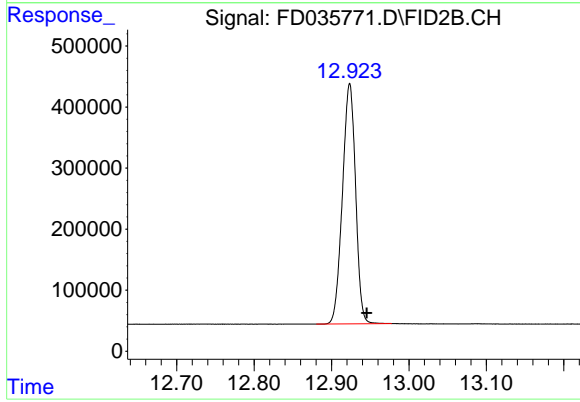
Volume Inj. : 1 ul
Signal Phase : Rxi-1ms
Signal Info : 20M x 0.18mm x 0.18um





#9 ortho-Terphenyl (SURR)

R.T.: 11.493 min
Delta R.T.: -0.020 min
Response: 5832036
Conc: 41.76 ug/ml



#12 1-chlorooctadecane (SURR)

R.T.: 12.924 min
Delta R.T.: -0.022 min
Response: 4647326
Conc: 41.45 ug/ml