

Data Path : Z:\pestpcbsrv\HPCHEM1\FID_D\Data\FD121521AL\
 Data File : FD039923.D
 Signal(s) : FID2B.CH
 Acq On : 15 Dec 2021 17:27
 Operator : AJ\MA
 Sample : I.BLK
 Misc :
 ALS Vial : 51 Sample Multiplier: 1

Instrument :
 FID_D
 ClientSampleId :

Integration File: autoint1.e
 Quant Time: Dec 16 01:24:14 2021
 Quant Method : Z:\pestpcbsrv\HPCHEM1\FID_D\methods\Aliphatic EPH 121521.M
 Quant Title : GC Extractables
 QLast Update : Wed Dec 15 16:44:55 2021
 Response via : Initial Calibration
 Integrator: ChemStation 6890 Scale Mode: Large solvent peaks clipped

Volume Inj. : 1 ul
 Signal Phase : Rxi-1ms
 Signal Info : 20M x 0.18mm x 0.18um

Compound	R.T.	Response	Conc Units

System Monitoring Compounds			
Target Compounds			
18) T n-Dotriacontane (C32)	17.760	29876	0.240 ug/ml
19) T n-Tetratriacontane (C34)	18.543	35137	0.291 ug/ml
21) T n-Octatriacontane (C38)	19.948f	273070	2.446 ug/ml

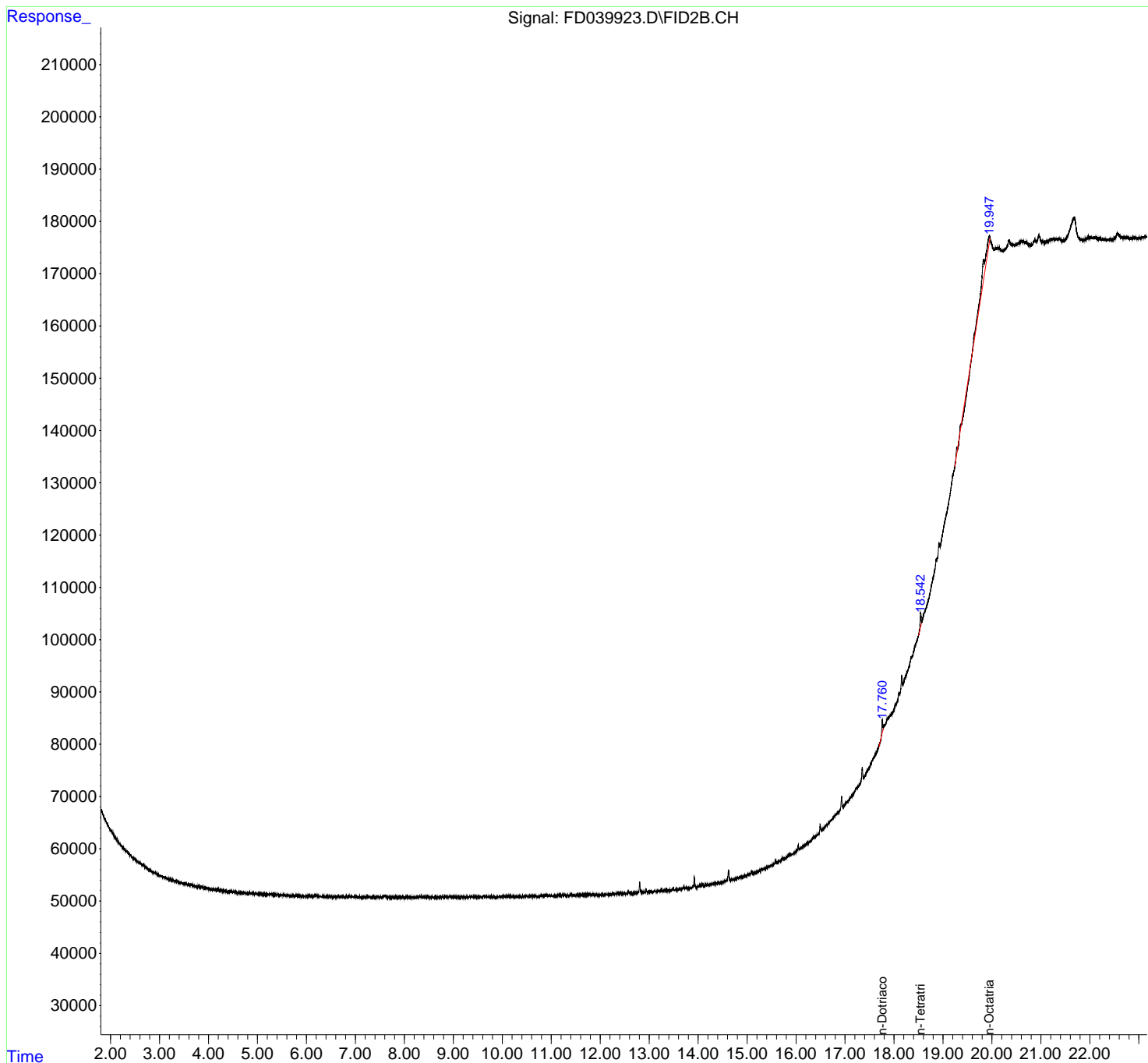
(f)=RT Delta > 1/2 Window (m)=manual int.

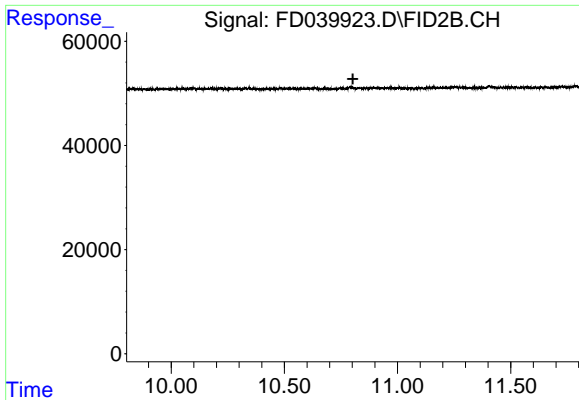
Data Path : Z:\pestpcbsrv\HPCHEM1\FID_D\Data\FD121521AL\
 Data File : FD039923.D
 Signal(s) : FID2B.CH
 Acq On : 15 Dec 2021 17:27
 Operator : AJ\MA
 Sample : I.BLK
 Misc :
 ALS Vial : 51 Sample Multiplier: 1

Instrument :
 FID_D
 ClientSampleId :

Integration File: autoint1.e
 Quant Time: Dec 16 01:24:14 2021
 Quant Method : Z:\pestpcbsrv\HPCHEM1\FID_D\methods\Aliphatic EPH 121521.M
 Quant Title : GC Extractables
 QLast Update : Wed Dec 15 16:44:55 2021
 Response via : Initial Calibration
 Integrator: ChemStation 6890 Scale Mode: Large solvent peaks clipped

Volume Inj. : 1 ul
 Signal Phase : Rxi-1ms
 Signal Info : 20M x 0.18mm x 0.18um

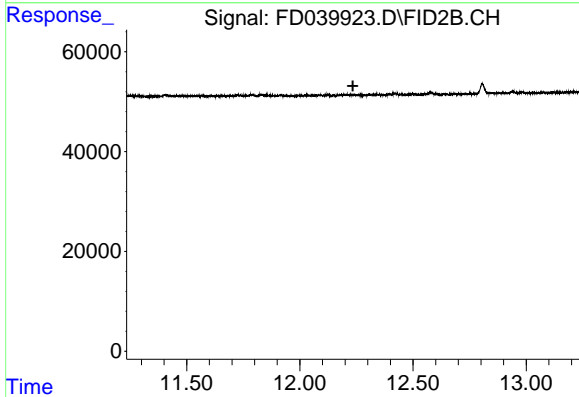




#9 ortho-Terphenyl (SURR)

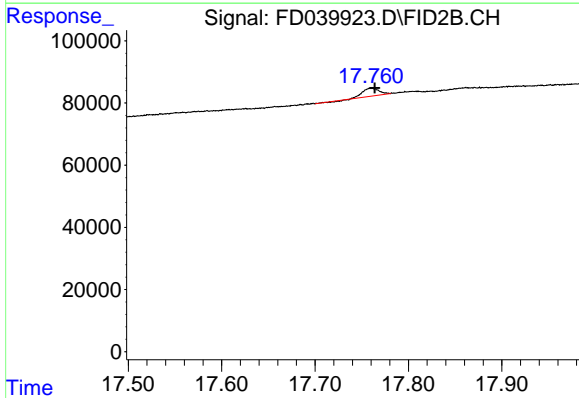
R.T.: 0.000 min
 Exp R.T.: 10.803 min
 Response: 0
 Conc: N.D.

Instrument :
 FID_D
 ClientSampleId :



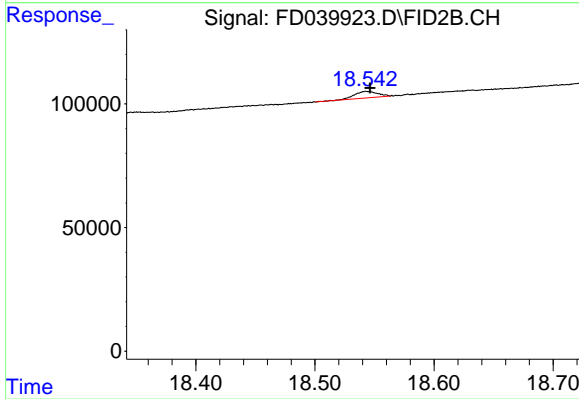
#12 1-chlorooctadecane (SURR)

R.T.: 0.000 min
 Exp R.T.: 12.234 min
 Response: 0
 Conc: N.D.



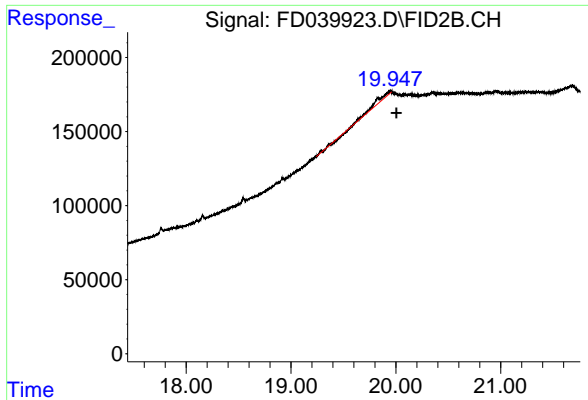
#18 n-Dotriacontane (C32)

R.T.: 17.760 min
 Delta R.T.: -0.004 min
 Response: 29876
 Conc: 0.24 ug/ml



#19 n-Tetratriacontane (C34)

R.T.: 18.543 min
 Delta R.T.: -0.003 min
 Response: 35137
 Conc: 0.29 ug/ml



#21 n-Octatriacontane (C38)

R.T.: 19.948 min
Delta R.T.: -0.057 min
Response: 273070
Conc: 2.45 ug/ml

Instrument :
FID_D
ClientSampleId :