

Data Path : Z:\pestpcbsrv\HPCHEM1\FID_D\Data\FD121523AR\
 Data File : FD047045.D
 Signal(s) : FID2B.ch
 Acq On : 15 Dec 2023 09:34
 Operator : YP/AJ
 Sample : 20 PPM AROMATIC HC STD
 Misc :
 ALS Vial : 52 Sample Multiplier: 1

Instrument :
 FID_D
 ClientSampleId :
 20 PPM AROMATIC HC STD

Integration File: autoint1.e
 Quant Time: Dec 15 22:33:24 2023
 Quant Method : Z:\pestpcbsrv\HPCHEM1\FID_D\methods\Aromatic EPH 112423.M
 Quant Title : GC Extractables
 QLast Update : Fri Nov 24 13:30:33 2023
 Response via : Initial Calibration
 Integrator: ChemStation

Volume Inj. : 1 µl
 Signal Phase : Rxi-1ms
 Signal Info : 20M x 0.18mm x 0.18µm

Compound	R.T.	Response	Conc Units

System Monitoring Compounds			
4) S 2-Bromonaphthalene (S...	7.470	3668938	21.207 ug/ml
Spiked Amount 50.000		Recovery =	42.41%
6) S 2-Fluorobiphenyl (SURR)	8.323	2276960	20.939 ug/ml
Spiked Amount 50.000 Range 0 - 131		Recovery =	41.88%
11) S ortho-Terphenyl (SURR)	11.360	4234811	21.281 ug/ml
Spiked Amount 50.000		Recovery =	42.56%
Target Compounds			
1) T 1,2,3-Trimethylbenzen...	4.285	3967521	21.323 ug/ml
2) T Naphthalene (C11.7)	5.810	4054498	21.291 ug/ml
3) T 2-Methylnaphthalene (...)	6.858	4038906	20.973 ug/ml
5) T Acenaphthylene (C15.06)	8.127	3686213	21.176 ug/ml
7) T Acenaphthene (C15.5)	8.422	3944934	21.272 ug/ml
8) T Flouorene (C16.55)	9.199	3613843	20.936 ug/ml
9) T Phenanthrene (C19.36)	10.588	3382146	20.599 ug/ml
10) T Anthracene (C19.43)	10.662	3068536	19.843 ug/ml
12) T Fluoranthene (C21.85)	12.390	3297963	20.808 ug/ml
13) T Pyrene (C20.8)	12.684	3199315	20.910 ug/ml
14) T Benzo[a]anthracene (C...	14.547	2540779	19.595 ug/ml
15) T Chrysene (C27.41)	14.589	2743795	19.143 ug/ml
16) T benzo[b]fluoranthene ...	16.089	2759302	20.658 ug/ml
17) T Bnezo[k]fluoranthene ...	16.120	2809246	20.562 ug/ml
18) T Benzo[a]pyrene (C31.34)	16.463	2662161	20.320 ug/ml
19) T Indeno[1,2,3-cd]pyren...	17.821	2229372	18.684 ug/ml
20) T Dibenz[a,h]anthracene...	17.862	2300028	17.701 ug/ml
21) T Benzo[g,h,i]perylene ...	18.072	2654299	20.287 ug/ml

(f)=RT Delta > 1/2 Window

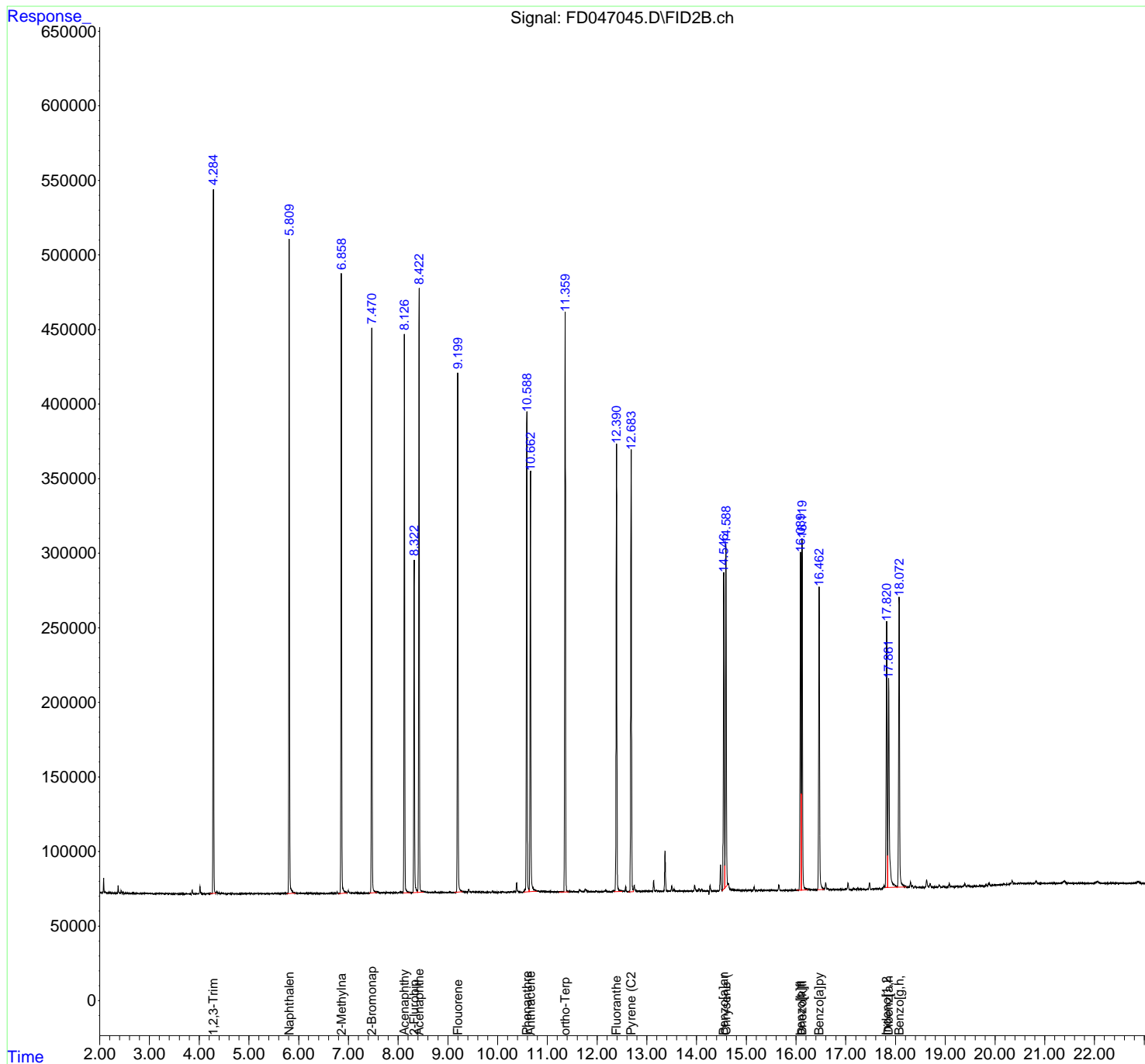
(m)=manual int.

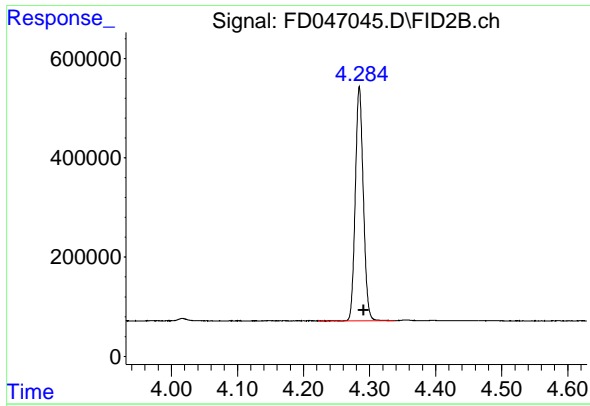
Data Path : Z:\pestpcbsrv\HPCHEM1\FID_D\Data\FD121523AR\
 Data File : FD047045.D
 Signal(s) : FID2B.ch
 Acq On : 15 Dec 2023 09:34
 Operator : YP/AJ
 Sample : 20 PPM AROMATIC HC STD
 Misc :
 ALS Vial : 52 Sample Multiplier: 1

Instrument :
 FID_D
 ClientSampleId :
 20 PPM AROMATIC HC STD

Integration File: autoint1.e
 Quant Time: Dec 15 22:33:24 2023
 Quant Method : Z:\pestpcbsrv\HPCHEM1\FID_D\methods\Aromatic EPH 112423.M
 Quant Title : GC Extractables
 QLast Update : Fri Nov 24 13:30:33 2023
 Response via : Initial Calibration
 Integrator: ChemStation

Volume Inj. : 1 µl
 Signal Phase : Rxi-1ms
 Signal Info : 20M x 0.18mm x 0.18µm

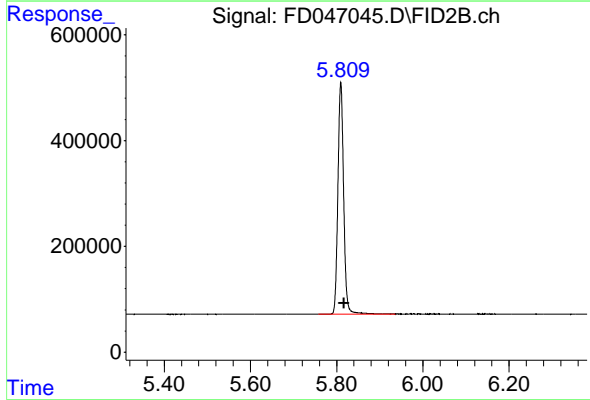




#1 1,2,3-Trimethylbenzene (C10.1)

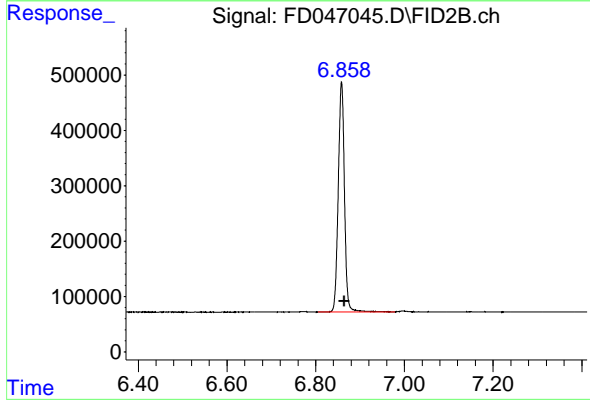
R.T.: 4.285 min
 Delta R.T.: -0.006 min
 Response: 3967521
 Conc: 21.32 ug/ml

Instrument :
 FID_D
 ClientSampleId :
 20 PPM AROMATIC HC STD



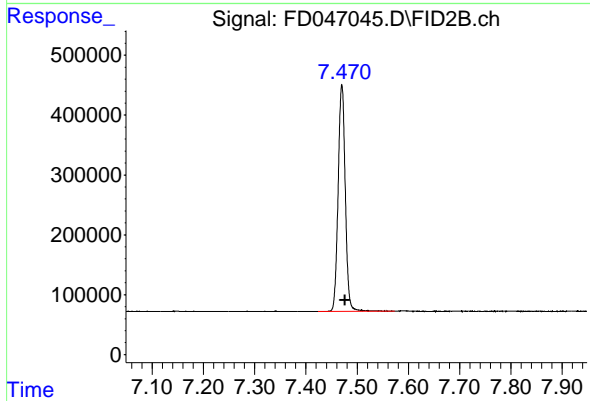
#2 Naphthalene (C11.7)

R.T.: 5.810 min
 Delta R.T.: -0.007 min
 Response: 4054498
 Conc: 21.29 ug/ml



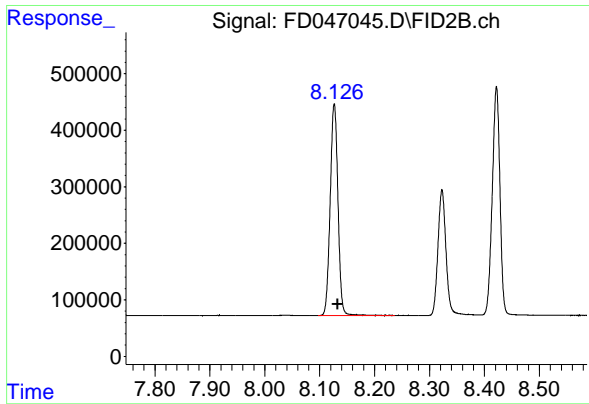
#3 2-Methylnaphthalene (C12.89)

R.T.: 6.858 min
 Delta R.T.: -0.006 min
 Response: 4038906
 Conc: 20.97 ug/ml



#4 2-Bromonaphthalene (SURR)

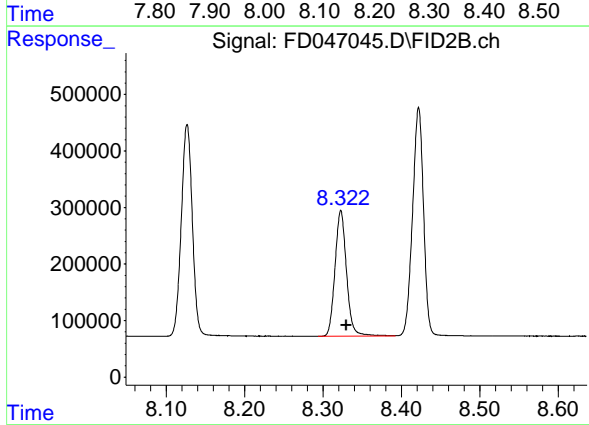
R.T.: 7.470 min
 Delta R.T.: -0.006 min
 Response: 3668938
 Conc: 21.21 ug/ml



#5 Acenaphthylene (C15.06)

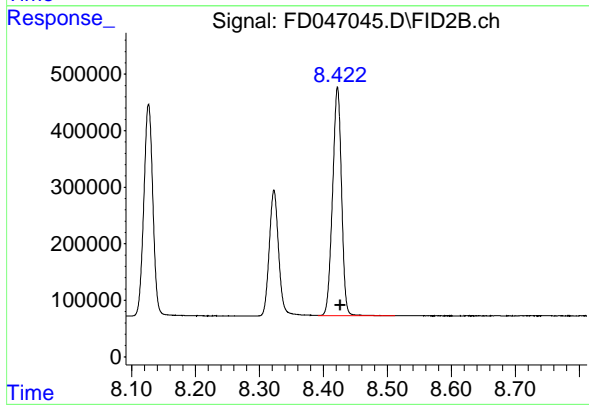
R.T.: 8.127 min
 Delta R.T.: -0.006 min
 Response: 3686213
 Conc: 21.18 ug/ml

Instrument : FID_D
 ClientSampleId : 20 PPM AROMATIC HC STD



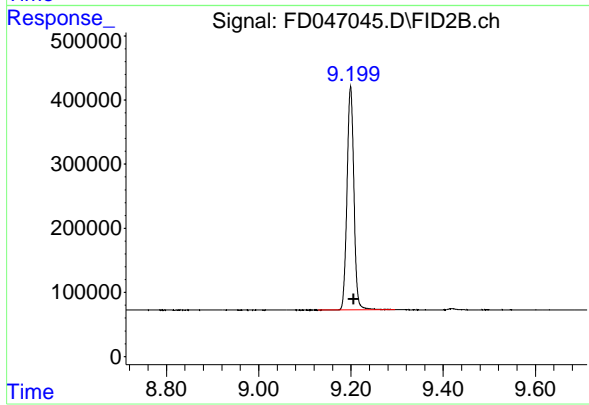
#6 2-Fluorobiphenyl (SURR)

R.T.: 8.323 min
 Delta R.T.: -0.007 min
 Response: 2276960
 Conc: 20.94 ug/ml



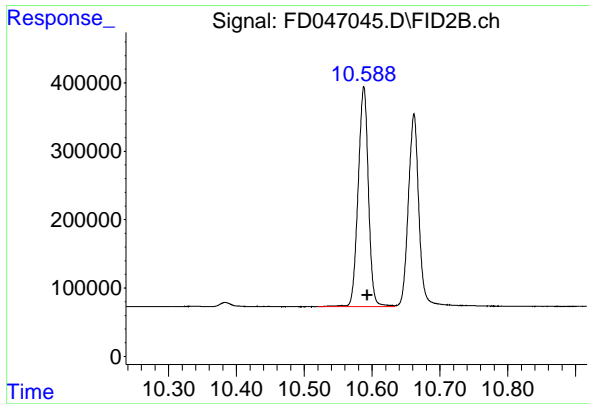
#7 Acenaphthene (C15.5)

R.T.: 8.422 min
 Delta R.T.: -0.005 min
 Response: 3944934
 Conc: 21.27 ug/ml



#8 Fluorene (C16.55)

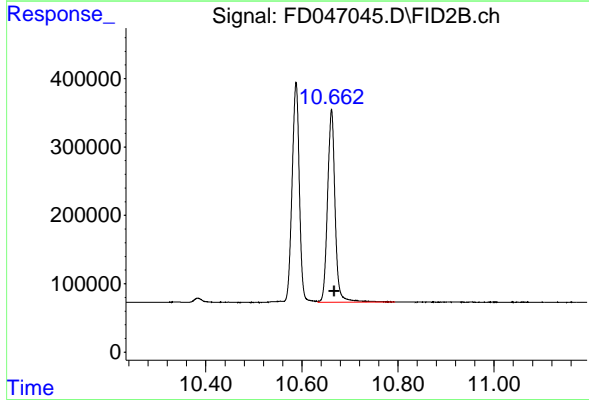
R.T.: 9.199 min
 Delta R.T.: -0.007 min
 Response: 3613843
 Conc: 20.94 ug/ml



#9 Phenanthrene (C19.36)

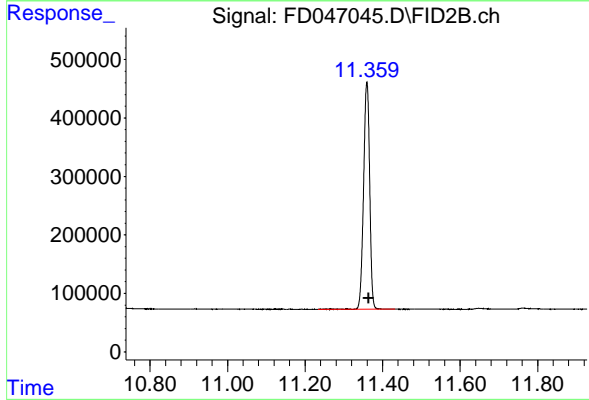
R.T.: 10.588 min
 Delta R.T.: -0.005 min
 Response: 3382146
 Conc: 20.60 ug/ml

Instrument :
 FID_D
 ClientSampleId :
 20 PPM AROMATIC HC STD



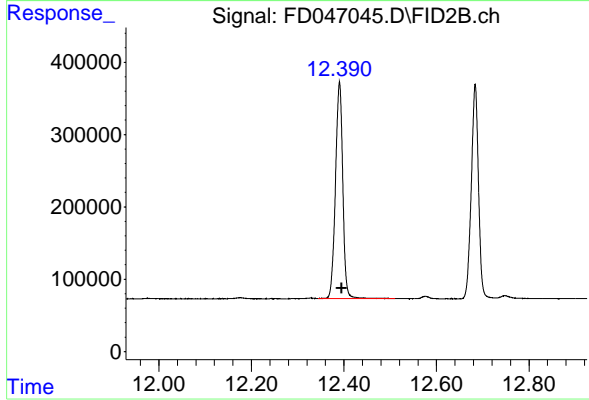
#10 Anthracene (C19.43)

R.T.: 10.662 min
 Delta R.T.: -0.006 min
 Response: 3068536
 Conc: 19.84 ug/ml



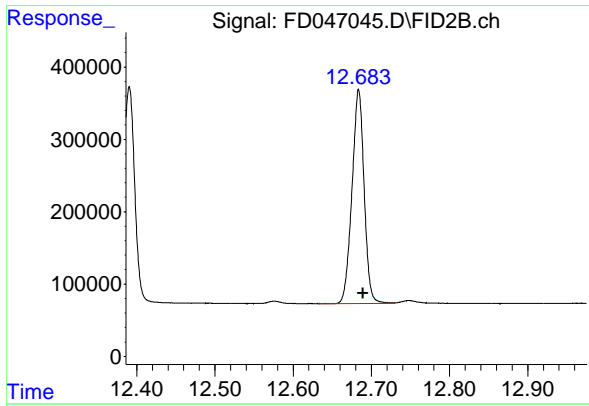
#11 ortho-Terphenyl (SURR)

R.T.: 11.360 min
 Delta R.T.: -0.005 min
 Response: 4234811
 Conc: 21.28 ug/ml



#12 Fluoranthene (C21.85)

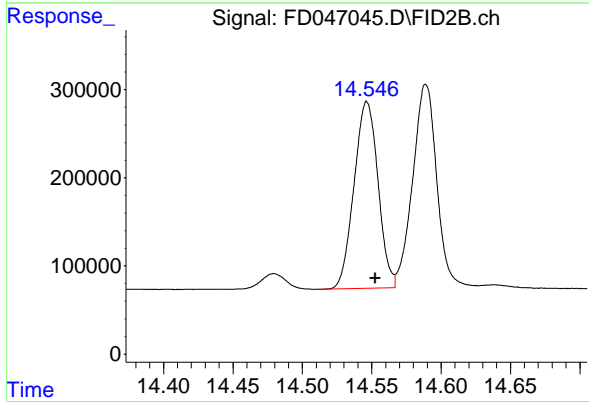
R.T.: 12.390 min
 Delta R.T.: -0.005 min
 Response: 3297963
 Conc: 20.81 ug/ml



#13 Pyrene (C20.8)

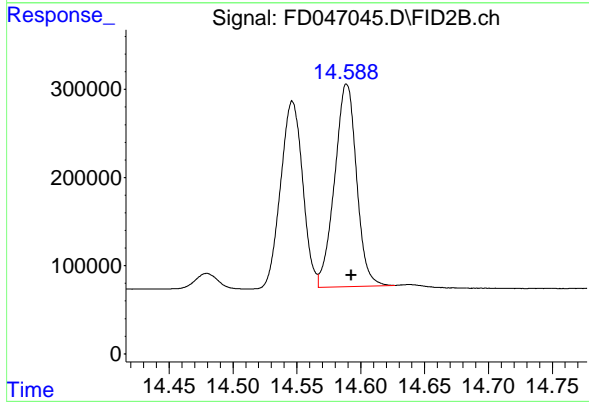
R.T.: 12.684 min
 Delta R.T.: -0.005 min
 Response: 3199315
 Conc: 20.91 ug/ml

Instrument : FID_D
 ClientSampleId : 20 PPM AROMATIC HC STD



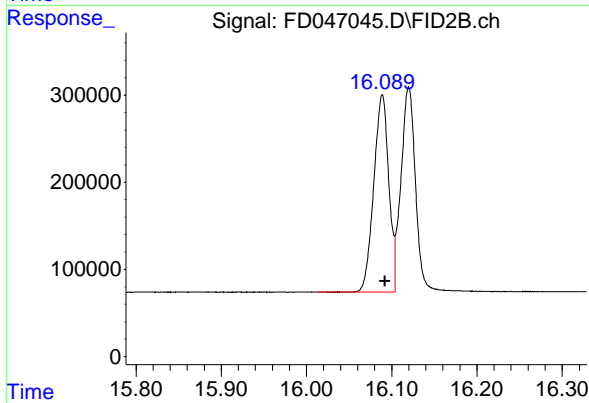
#14 Benzo[a]anthracene (C26.37)

R.T.: 14.547 min
 Delta R.T.: -0.006 min
 Response: 2540779
 Conc: 19.60 ug/ml



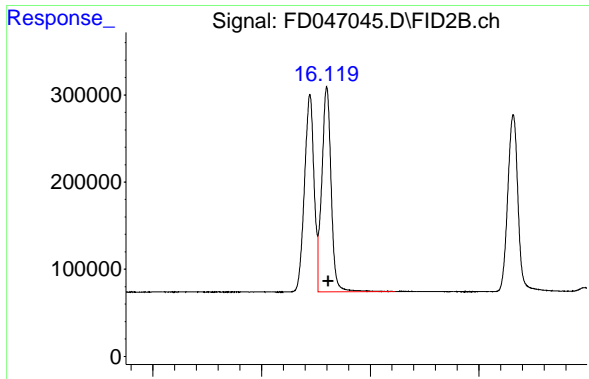
#15 Chrysene (C27.41)

R.T.: 14.589 min
 Delta R.T.: -0.004 min
 Response: 2743795
 Conc: 19.14 ug/ml



#16 benzo[b]fluoranthene (C30.41)

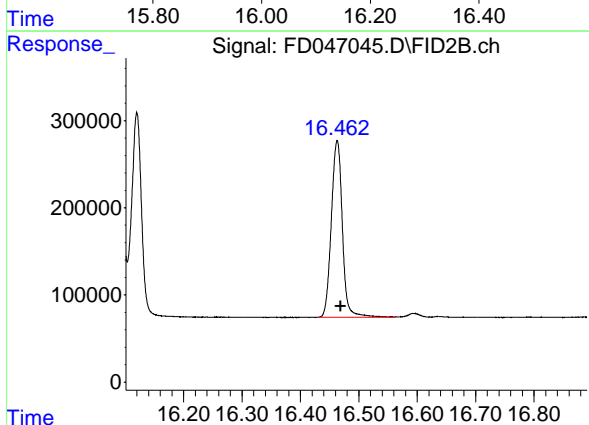
R.T.: 16.089 min
 Delta R.T.: -0.003 min
 Response: 2759302
 Conc: 20.66 ug/ml



#17 Bnezo[k]fluoranthene (C30.14)

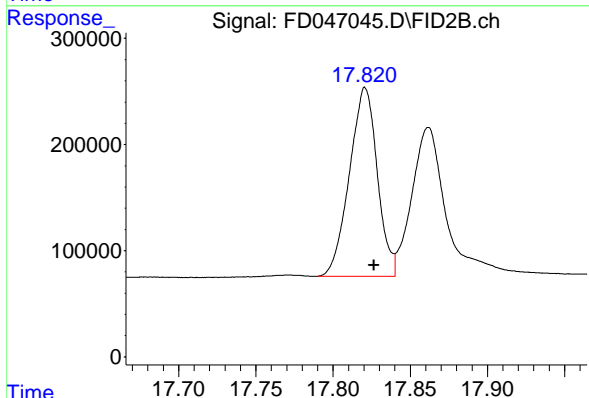
R.T.: 16.120 min
 Delta R.T.: -0.003 min
 Response: 2809246
 Conc: 20.56 ug/ml

Instrument :
 FID_D
 ClientSampleId :
 20 PPM AROMATIC HC STD



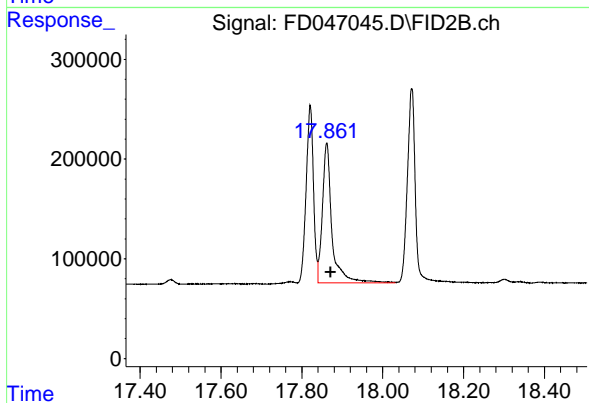
#18 Benzo[a]pyrene (C31.34)

R.T.: 16.463 min
 Delta R.T.: -0.006 min
 Response: 2662161
 Conc: 20.32 ug/ml



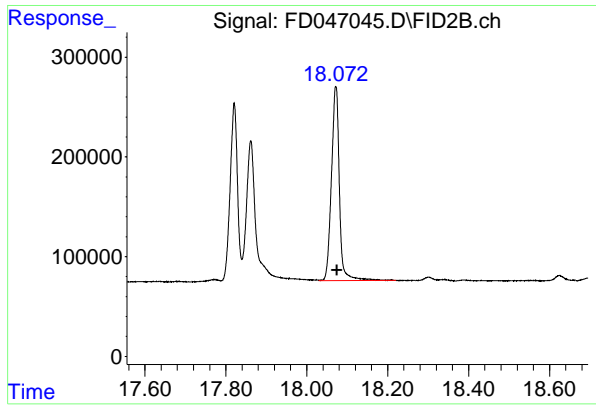
#19 Indeno[1,2,3-cd]pyrene (C35.01)

R.T.: 17.821 min
 Delta R.T.: -0.006 min
 Response: 2229372
 Conc: 18.68 ug/ml



#20 Dibenz[a,h]anthracene (C30.36)

R.T.: 17.862 min
 Delta R.T.: -0.010 min
 Response: 2300028
 Conc: 17.70 ug/ml



#21 Benzo[g,h,i]perylene (C34.01)

R.T.: 18.072 min
Delta R.T.: -0.003 min
Response: 2654299
Conc: 20.29 ug/ml

Instrument : FID_D
ClientSampleId : 20 PPM AROMATIC HC STD