

Data Path : Z:\pestpcbsrv\HPCHEM1\FID_D\Data\FD121621AL\
 Data File : FD039981.D
 Signal(s) : FID2B.CH
 Acq On : 17 Dec 2021 5:06
 Operator : AJ\MA
 Sample : M5089-08D
 Misc :
 ALS Vial : 72 Sample Multiplier: 1

Instrument :
 FID_D
 ClientSampleId :

Integration File: autoint1.e
 Quant Time: Dec 17 08:29:45 2021
 Quant Method : Z:\pestpcbsrv\HPCHEM1\FID_D\methods\Aliphatic EPH 121521.M
 Quant Title : GC Extractables
 QLast Update : Wed Dec 15 16:44:55 2021
 Response via : Initial Calibration
 Integrator: ChemStation 6890 Scale Mode: Large solvent peaks clipped

Volume Inj. : 1 ul
 Signal Phase : Rxi-1ms
 Signal Info : 20M x 0.18mm x 0.18um

Compound	R.T.	Response	Conc Units

System Monitoring Compounds			
9) S ortho-Terphenyl (SURR)	10.770	5960812	37.970 ug/ml
Spiked Amount	50.000	Recovery	= 75.94%
12) S 1-chlorooctadecane (S...	12.248	81023	0.656 ug/ml
Spiked Amount	50.000	Recovery	= 1.31%
Target Compounds			
3) T A~Naphthalene (C11.7)	5.220	32549	0.203 ug/ml
6) T n-Tetradecane (C14)	7.429	54713	0.380 ug/ml
8) T n-Octadecane (C18)	10.536	87308	0.587 ug/ml
10) T n-Eicosane (C20)	11.826	36867	0.252 ug/ml
14) T n-Tetracosane (C24)	14.097	49486	0.340 ug/ml
16) T n-Octacosane (C28)	16.065	509025	3.753 ug/ml
17) T n-Tricontane (C30)	16.900	85227	0.652 ug/ml
18) T n-Dotriacontane (C32)	17.729	93018	0.747 ug/ml
19) T n-Tetratriacontane (C34)	18.515	42226	0.350 ug/ml

(f)=RT Delta > 1/2 Window

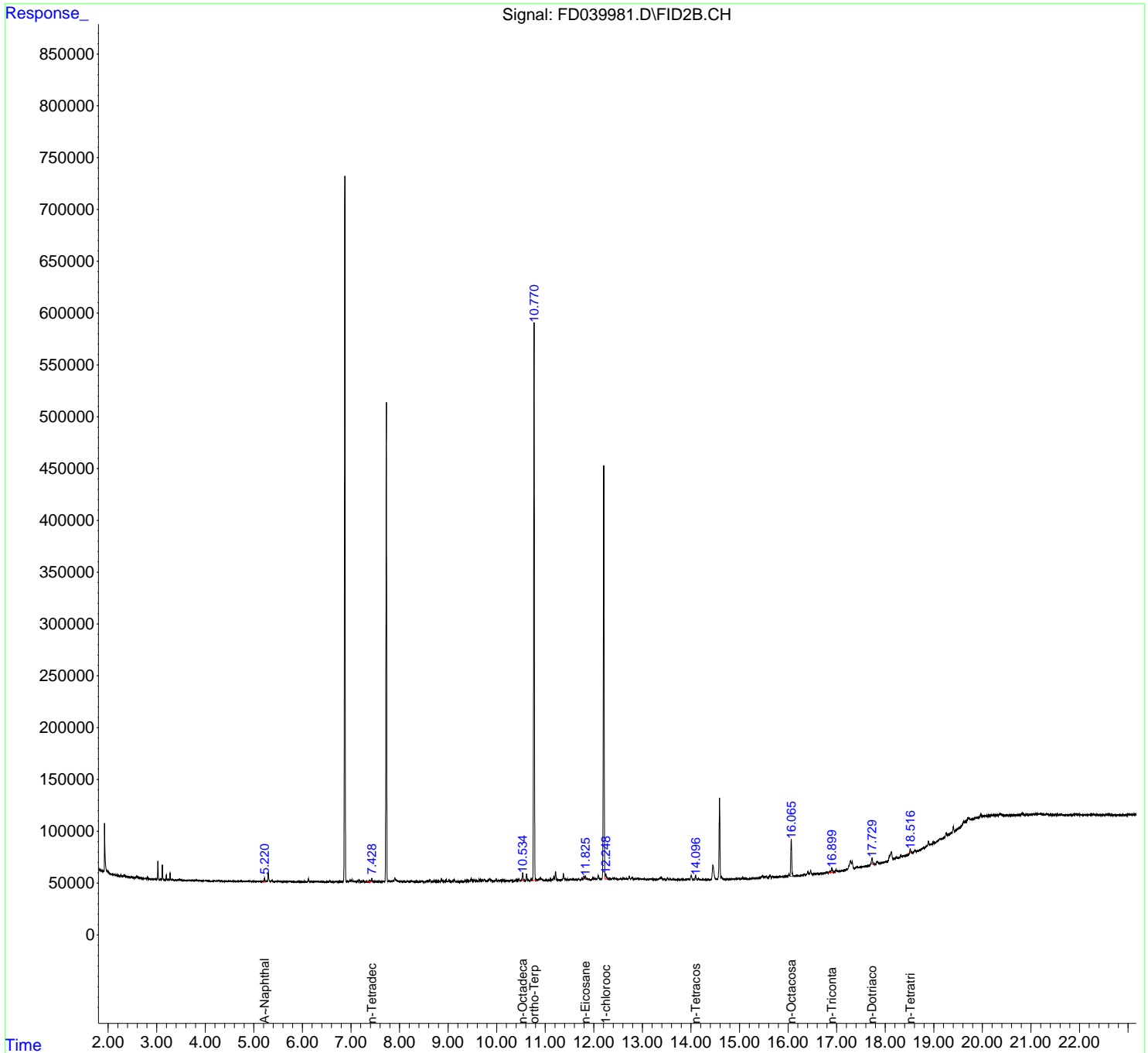
(m)=manual int.

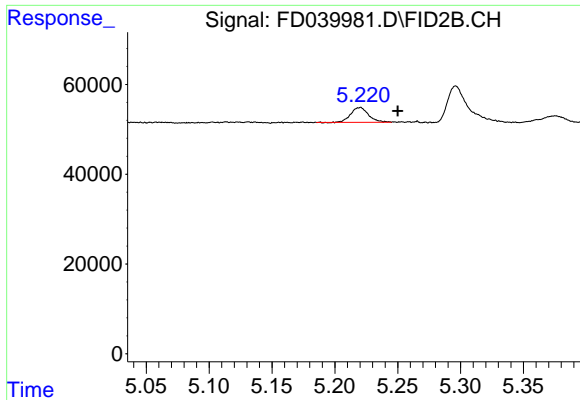
Data Path : Z:\pestpcbsrv\HPCHEM1\FID_D\Data\FD121621AL\
 Data File : FD039981.D
 Signal(s) : FID2B.CH
 Acq On : 17 Dec 2021 5:06
 Operator : AJ\MA
 Sample : M5089-08D
 Misc :
 ALS Vial : 72 Sample Multiplier: 1

Instrument :
 FID_D
 ClientSampleId :

Integration File: autoint1.e
 Quant Time: Dec 17 08:29:45 2021
 Quant Method : Z:\pestpcbsrv\HPCHEM1\FID_D\methods\Aliphatic EPH 121521.M
 Quant Title : GC Extractables
 QLast Update : Wed Dec 15 16:44:55 2021
 Response via : Initial Calibration
 Integrator: ChemStation 6890 Scale Mode: Large solvent peaks clipped

Volume Inj. : 1 ul
 Signal Phase : Rxi-1ms
 Signal Info : 20M x 0.18mm x 0.18um

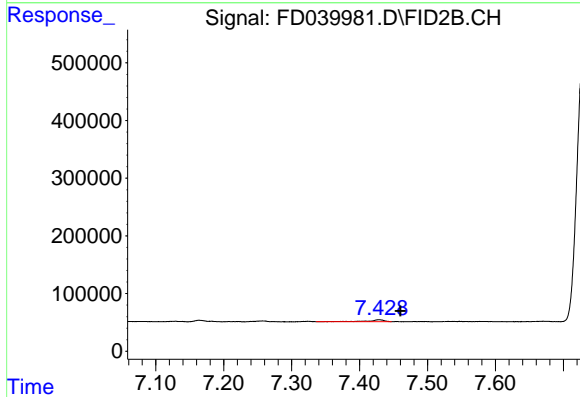




#3 A~Naphthalene (C11.7)

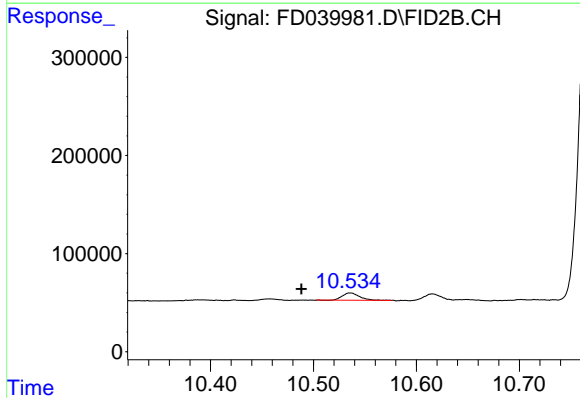
R.T.: 5.220 min
 Delta R.T.: -0.030 min
 Response: 32549
 Conc: 0.20 ug/ml

Instrument :
 FID_D
 ClientSampleId :



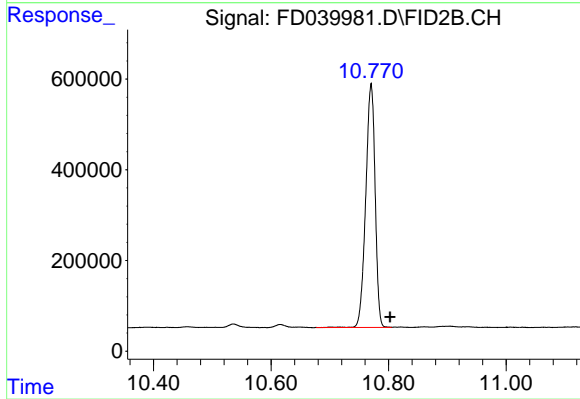
#6 n-Tetradecane (C14)

R.T.: 7.429 min
 Delta R.T.: -0.032 min
 Response: 54713
 Conc: 0.38 ug/ml



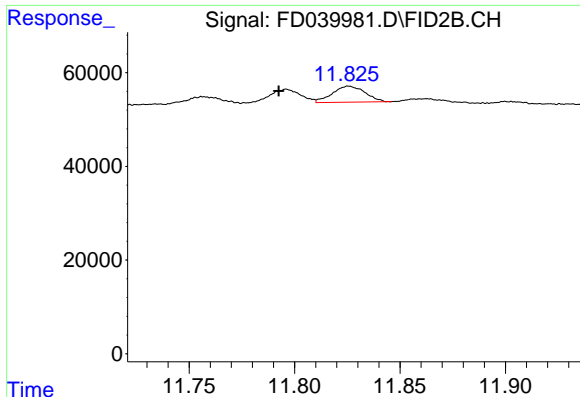
#8 n-Octadecane (C18)

R.T.: 10.536 min
 Delta R.T.: 0.047 min
 Response: 87308
 Conc: 0.59 ug/ml



#9 ortho-Terphenyl (SURR)

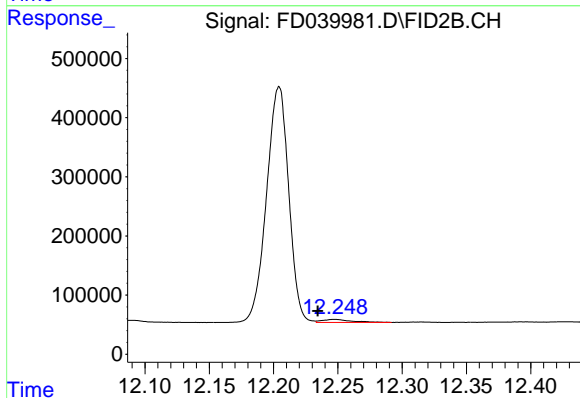
R.T.: 10.770 min
 Delta R.T.: -0.033 min
 Response: 5960812
 Conc: 37.97 ug/ml



#10 n-Eicosane (C20)

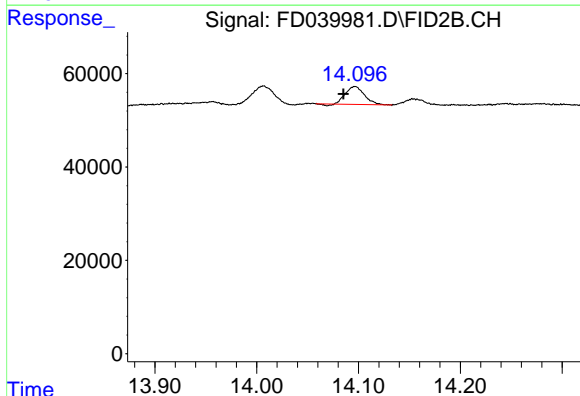
R.T.: 11.826 min
 Delta R.T.: 0.033 min
 Response: 36867
 Conc: 0.25 ug/ml

Instrument :
 FID_D
 ClientSampleId :



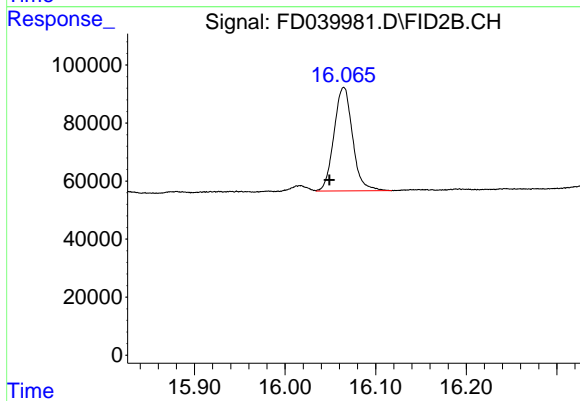
#12 1-chlorooctadecane (SURR)

R.T.: 12.248 min
 Delta R.T.: 0.013 min
 Response: 81023
 Conc: 0.66 ug/ml



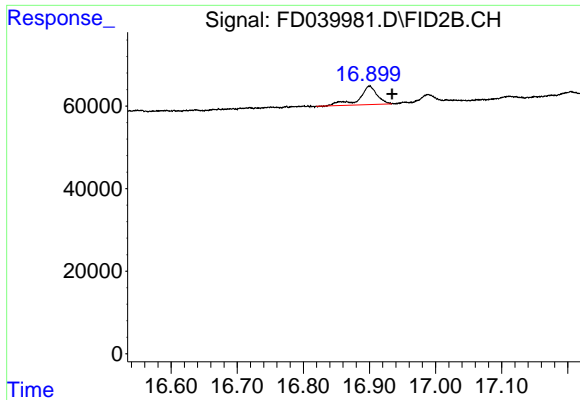
#14 n-Tetracosane (C24)

R.T.: 14.097 min
 Delta R.T.: 0.012 min
 Response: 49486
 Conc: 0.34 ug/ml



#16 n-Octacosane (C28)

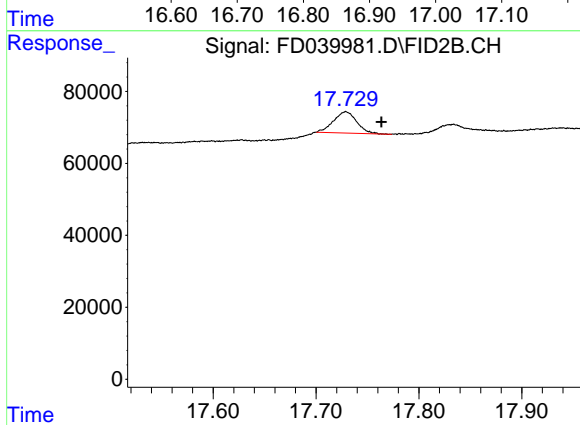
R.T.: 16.065 min
 Delta R.T.: 0.016 min
 Response: 509025
 Conc: 3.75 ug/ml



#17 n-Tricontane (C30)

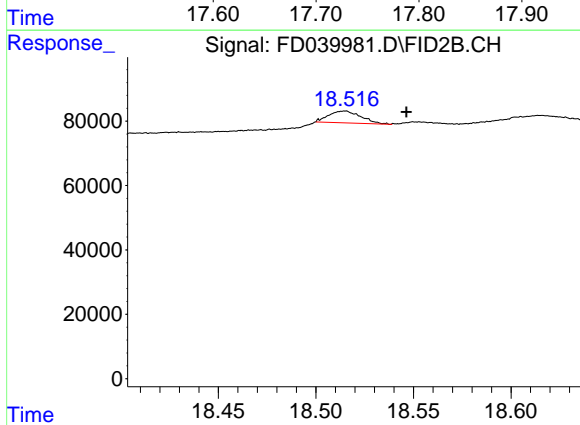
R.T.: 16.900 min
 Delta R.T.: -0.034 min
 Response: 85227
 Conc: 0.65 ug/ml

Instrument :
 FID_D
 ClientSampleId :



#18 n-Dotriacontane (C32)

R.T.: 17.729 min
 Delta R.T.: -0.035 min
 Response: 93018
 Conc: 0.75 ug/ml



#19 n-Tetratriacontane (C34)

R.T.: 18.515 min
 Delta R.T.: -0.032 min
 Response: 42226
 Conc: 0.35 ug/ml