

Data Path : Z:\pestpcbsrv\HPCHEM1\FID\_D\Data\FD121621AR\  
 Data File : FD039950.D  
 Signal(s) : FID2B.CH  
 Acq On : 16 Dec 2021 11:04  
 Operator : AJ\MA  
 Sample : M5011-11DL 20X  
 Misc :  
 ALS Vial : 54 Sample Multiplier: 1

Instrument :  
 FID\_D  
 ClientSampleId :

Integration File: autoint1.e  
 Quant Time: Dec 17 00:14:14 2021  
 Quant Method : Z:\pestpcbsrv\HPCHEM1\FID\_D\methods\Aromatic EPH 121421.M  
 Quant Title : GC Extractables  
 QLast Update : Wed Dec 15 10:24:29 2021  
 Response via : Initial Calibration  
 Integrator: ChemStation 6890 Scale Mode: Large solvent peaks clipped

Volume Inj. : 1 µl  
 Signal Phase : Rxi-1ms  
 Signal Info : 20M x 0.18mm x 0.18µm

Compound	R.T.	Response	Conc Units
-----			
System Monitoring Compounds			
4) S 2-Bromonaphthalene (S...	6.883	369978	2.602 ug/ml
Spiked Amount 50.000		Recovery =	5.20%
6) S 2-Fluorobiphenyl (SURR)	7.736	238324	2.426 ug/ml
Spiked Amount 50.000 Range 0 - 131		Recovery =	4.85%
11) S ortho-Terphenyl (SURR)	10.777	279946	1.839 ug/ml
Spiked Amount 50.000		Recovery =	3.68%
Target Compounds			
1) T 1,2,3-Trimethylbenzen...	3.752	147387	0.973 ug/ml
2) T Naphthalene (C11.7)	5.260	351255	2.186 ug/ml
3) T 2-Methylnaphthalene (...)	6.321	52103	0.321 ug/ml
5) T Acenaphthylene (C15.06)	7.631f	29626	0.198 ug/ml
13) T Pyrene (C20.8)	12.212f	77168	0.518 ug/ml
-----			

(f)=RT Delta > 1/2 Window

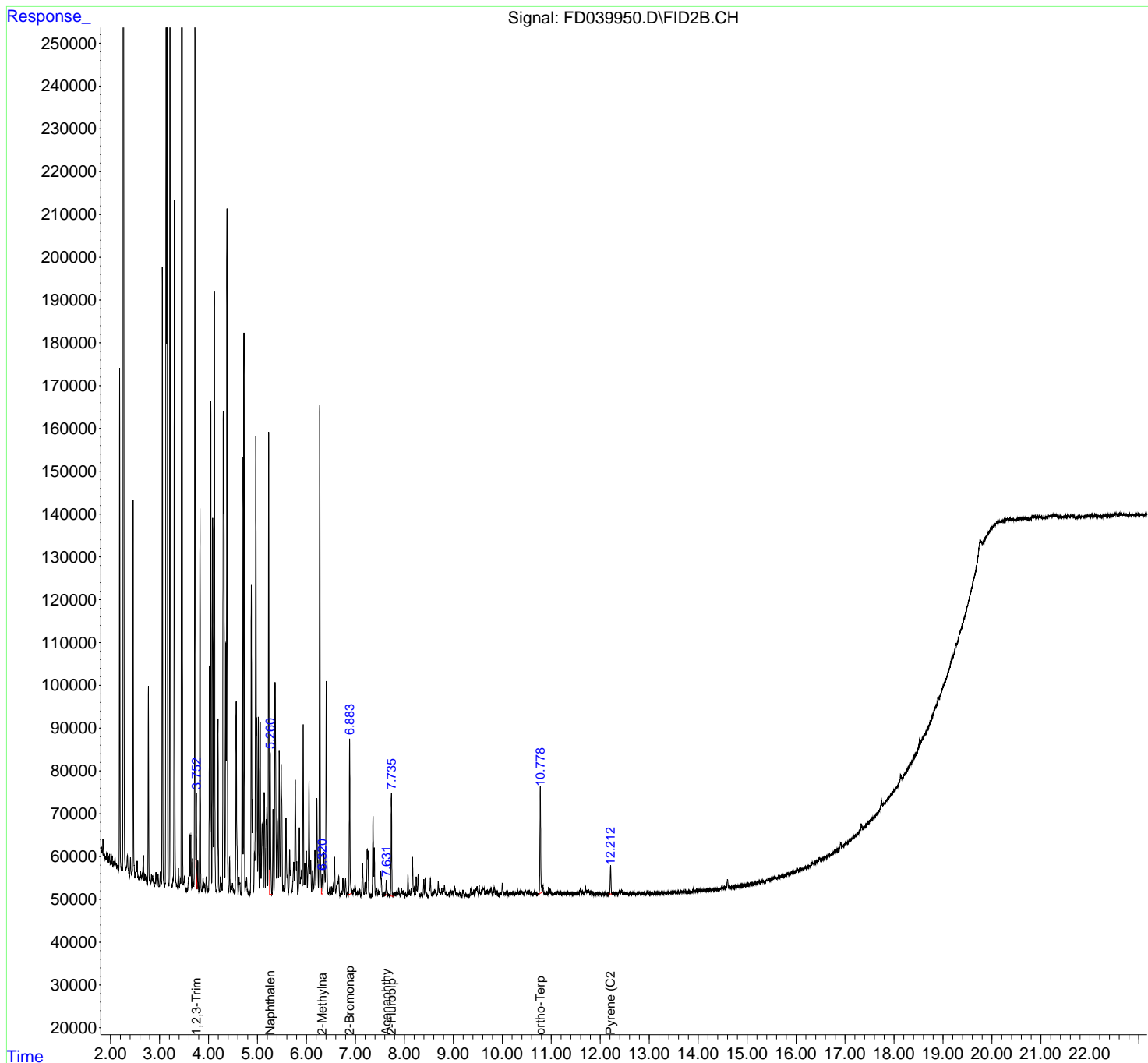
(m)=manual int.

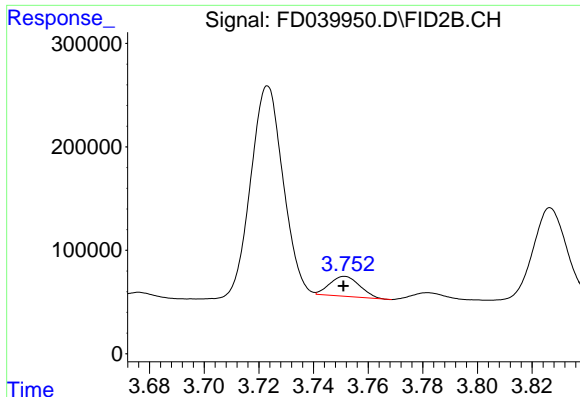
Data Path : Z:\pestpcbsrv\HPCHEM1\FID\_D\Data\FD121621AR\  
 Data File : FD039950.D  
 Signal(s) : FID2B.CH  
 Acq On : 16 Dec 2021 11:04  
 Operator : AJ\MA  
 Sample : M5011-11DL 20X  
 Misc :  
 ALS Vial : 54 Sample Multiplier: 1

Instrument :  
 FID\_D  
 ClientSampleId :

Integration File: autoint1.e  
 Quant Time: Dec 17 00:14:14 2021  
 Quant Method : Z:\pestpcbsrv\HPCHEM1\FID\_D\methods\Aromatic EPH 121421.M  
 Quant Title : GC Extractables  
 QLast Update : Wed Dec 15 10:24:29 2021  
 Response via : Initial Calibration  
 Integrator: ChemStation 6890 Scale Mode: Large solvent peaks clipped

Volume Inj. : 1 µl  
 Signal Phase : Rxi-1ms  
 Signal Info : 20M x 0.18mm x 0.18µm

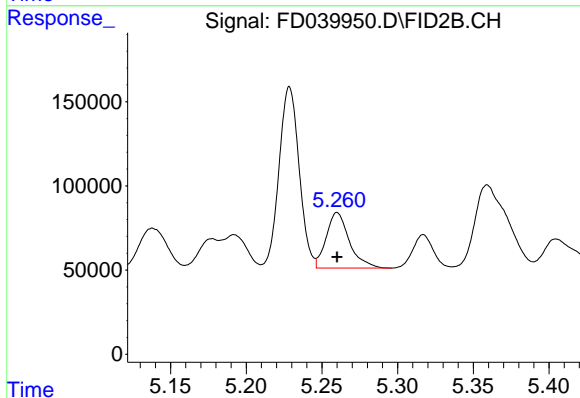




#1 1,2,3-Trimethylbenzene (C10.1)

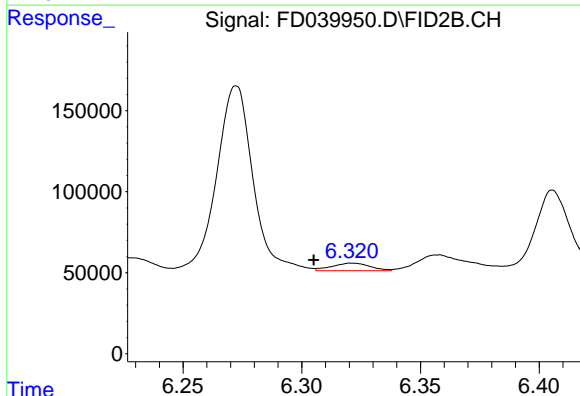
R.T.: 3.752 min  
 Delta R.T.: 0.000 min  
 Response: 147387  
 Conc: 0.97 ug/ml

Instrument :  
 FID\_D  
 ClientSampleId :



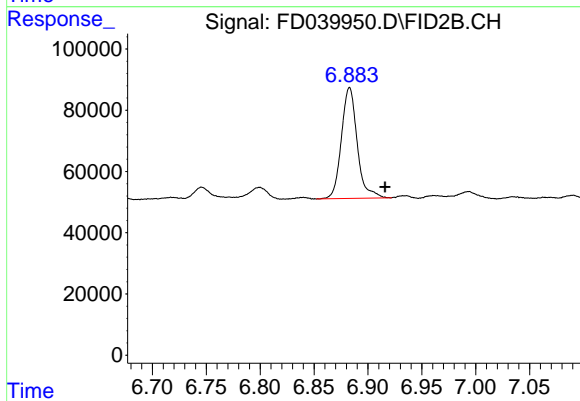
#2 Naphthalene (C11.7)

R.T.: 5.260 min  
 Delta R.T.: 0.000 min  
 Response: 351255  
 Conc: 2.19 ug/ml



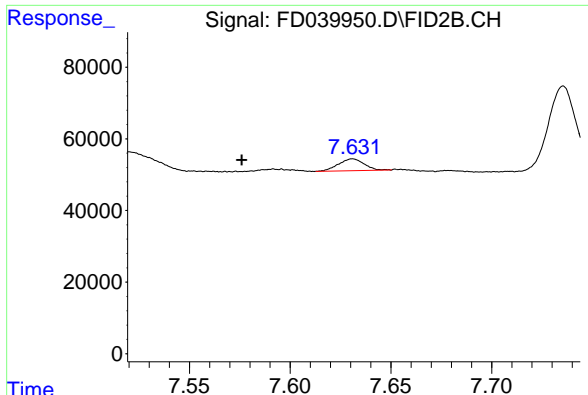
#3 2-Methylnaphthalene (C12.89)

R.T.: 6.321 min  
 Delta R.T.: 0.016 min  
 Response: 52103  
 Conc: 0.32 ug/ml



#4 2-Bromonaphthalene (SURR)

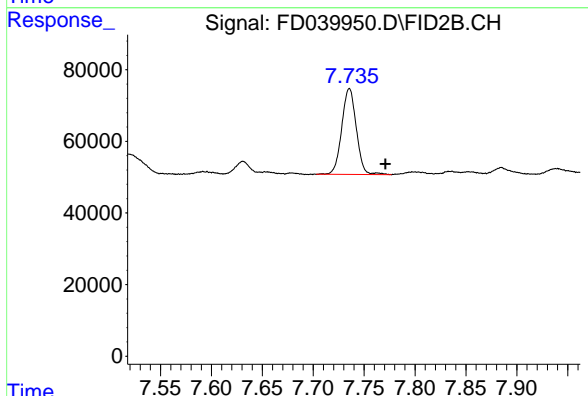
R.T.: 6.883 min  
 Delta R.T.: -0.033 min  
 Response: 369978  
 Conc: 2.60 ug/ml



#5 Acenaphthylene (C15.06)

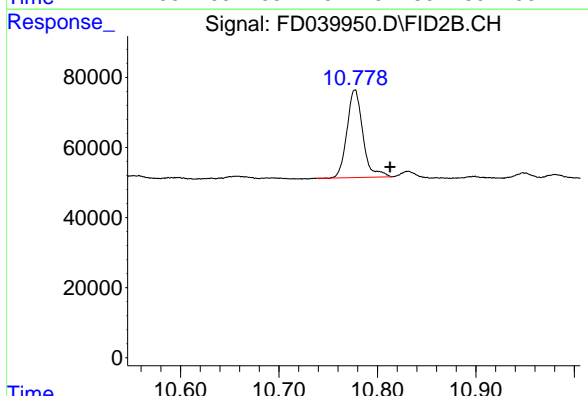
R.T.: 7.631 min  
 Delta R.T.: 0.055 min  
 Response: 29626  
 Conc: 0.20 ug/ml

Instrument :  
 FID\_D  
 ClientSampleId :



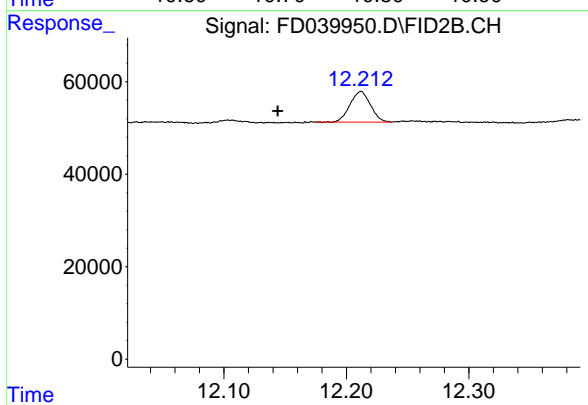
#6 2-Fluorobiphenyl (SURR)

R.T.: 7.736 min  
 Delta R.T.: -0.035 min  
 Response: 238324  
 Conc: 2.43 ug/ml



#11 ortho-Terphenyl (SURR)

R.T.: 10.777 min  
 Delta R.T.: -0.036 min  
 Response: 279946  
 Conc: 1.84 ug/ml



#13 Pyrene (C20.8)

R.T.: 12.212 min  
 Delta R.T.: 0.068 min  
 Response: 77168  
 Conc: 0.52 ug/ml