

Data Path : Z:\pestpcbsrv\HPCHEM1\FID\_D\Data\FD121621AR\  
Data File : FD039956.D  
Signal(s) : FID2B.CH  
Acq On : 16 Dec 2021 14:26  
Operator : AJ\MA  
Sample : I.BLK  
Misc :  
ALS Vial : 51 Sample Multiplier: 1

Instrument :  
FID\_D  
ClientSampleId :  
I.BLK

Integration File: sample.E  
Quant Time: Dec 17 00:16:18 2021  
Quant Method : Z:\pestpcbsrv\HPCHEM1\FID\_D\methods\Aromatic EPH 121421.M  
Quant Title : GC Extractables  
QLast Update : Wed Dec 15 10:24:29 2021  
Response via : Initial Calibration  
Integrator: ChemStation 6890 Scale Mode: Large solvent peaks clipped

Volume Inj. : 1 µl  
Signal Phase : Rxi-1ms  
Signal Info : 20M x 0.18mm x 0.18µm

Compound R.T. Response Conc Units

-----  
System Monitoring Compounds

Target Compounds  
-----

(f)=RT Delta > 1/2 Window

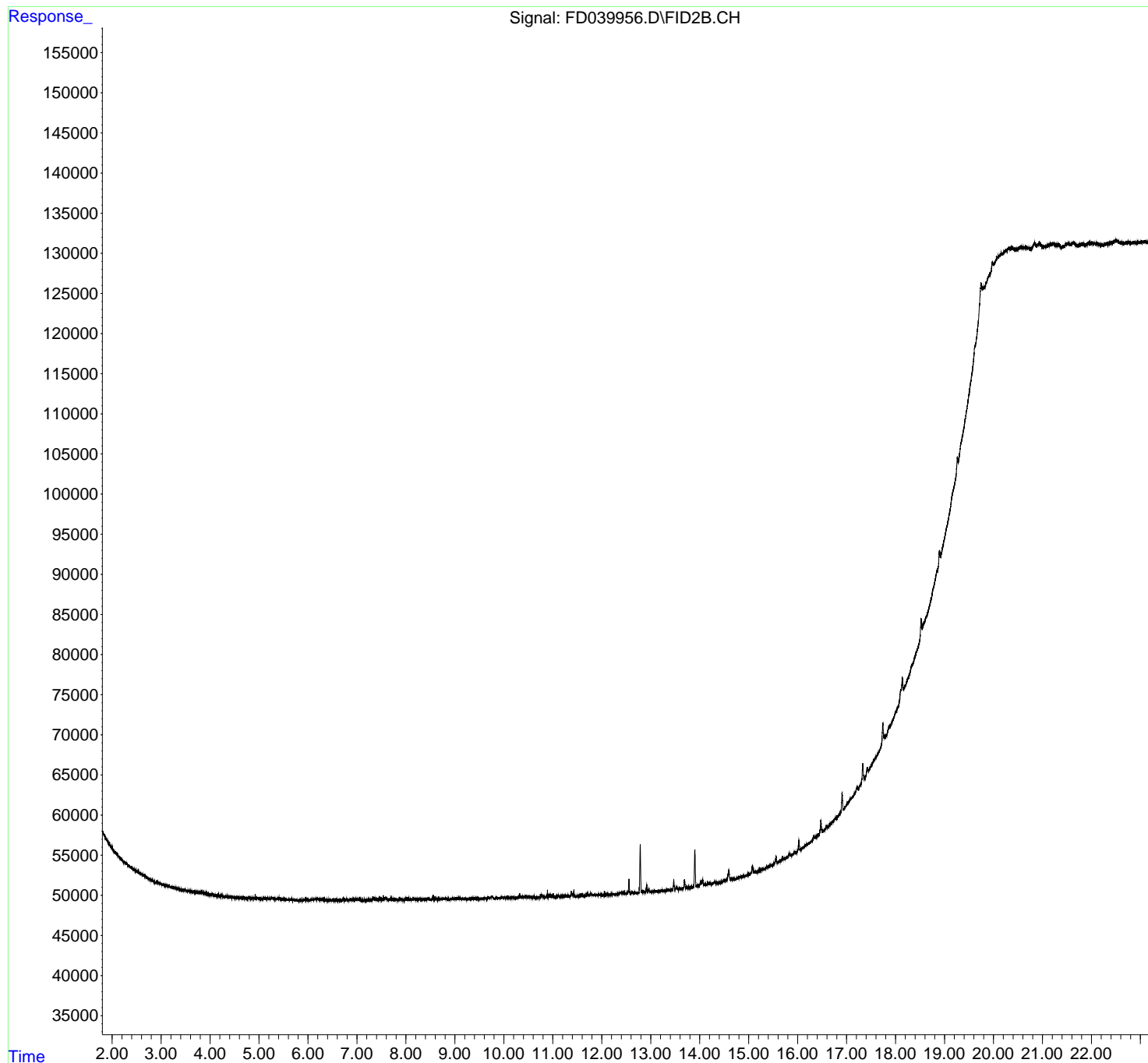
(m)=manual int.

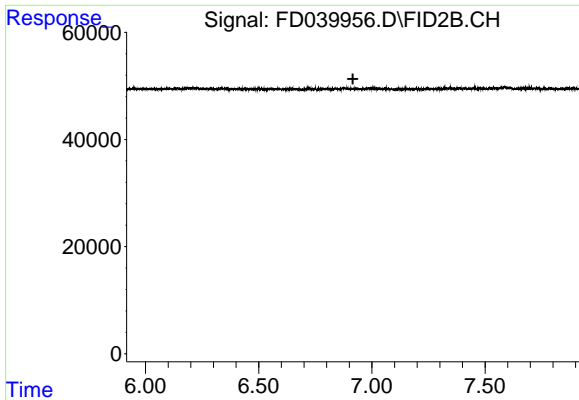
Data Path : Z:\pestpcbsrv\HPCHEM1\FID\_D\Data\FD121621AR\  
Data File : FD039956.D  
Signal(s) : FID2B.CH  
Acq On : 16 Dec 2021 14:26  
Operator : AJ\MA  
Sample : I.BLK  
Misc :  
ALS Vial : 51 Sample Multiplier: 1

Instrument :  
FID\_D  
ClientSampleId :  
I.BLK

Integration File: sample.E  
Quant Time: Dec 17 00:16:18 2021  
Quant Method : Z:\pestpcbsrv\HPCHEM1\FID\_D\methods\Aromatic EPH 121421.M  
Quant Title : GC Extractables  
QLast Update : Wed Dec 15 10:24:29 2021  
Response via : Initial Calibration  
Integrator: ChemStation 6890 Scale Mode: Large solvent peaks clipped

Volume Inj. : 1  $\mu$ l  
Signal Phase : Rxi-1ms  
Signal Info : 20M x 0.18mm x 0.18 $\mu$ m

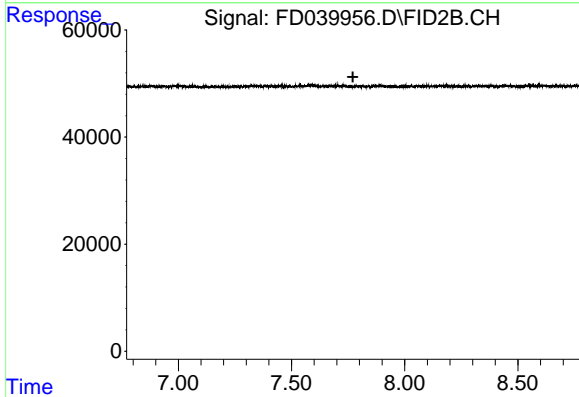




#4 2-Bromonaphthalene (SURR)

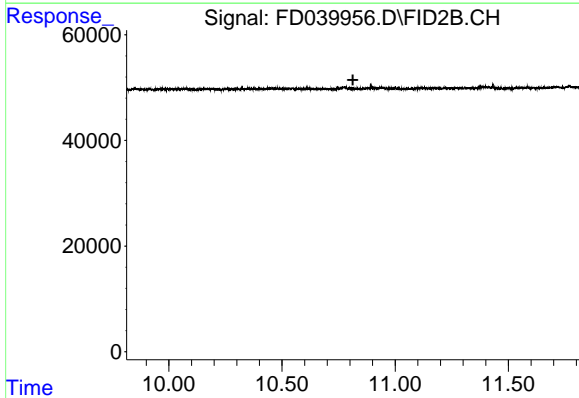
R.T.: 0.000 min  
 Exp R.T. : 6.916 min  
 Response: 0  
 Conc: N.D.

Instrument :  
 FID\_D  
 ClientSampleId :  
 I.BLK



#6 2-Fluorobiphenyl (SURR)

R.T.: 0.000 min  
 Exp R.T. : 7.771 min  
 Response: 0  
 Conc: N.D.



#11 ortho-Terphenyl (SURR)

R.T.: 0.000 min  
 Exp R.T. : 10.813 min  
 Response: 0  
 Conc: N.D.