

Data Path : Z:\pestpcbsrv\HPCHEM1\FID_D\Data\FD121721AL\
 Data File : FD039993.D
 Signal(s) : FID2B.CH
 Acq On : 17 Dec 2021 11:53
 Operator : AJ\MA
 Sample : PB141482BS
 Misc :
 ALS Vial : 54 Sample Multiplier: 1

Instrument :

FID_D

ClientSampleId :

PB141482BS

Manual Integrations**APPROVED**

Reviewed By :Yogesh Patel 12/20/2021

Supervised By :Ankita Jodhani 12/23/2021

Integration File: autoint1.e
 Quant Time: Dec 17 23:39:52 2021
 Quant Method : Z:\pestpcbsrv\HPCHEM1\FID_D\methods\Aliphatic EPH 121521.M
 Quant Title : GC Extractables
 QLast Update : Wed Dec 15 16:44:55 2021
 Response via : Initial Calibration
 Integrator: ChemStation 6890 Scale Mode: Large solvent peaks clipped

Volume Inj. : 1 ul
 Signal Phase : Rxi-1ms
 Signal Info : 20M x 0.18mm x 0.18um

Compound	R.T.	Response	Conc Units

System Monitoring Compounds			
9) S ortho-Terphenyl (SURR)	10.766	7178201	45.725 ug/ml
Spiked Amount	50.000	Recovery	= 91.45%
12) S 1-chlorooctadecane (S...	12.200	5691533	46.088 ug/ml
Spiked Amount	50.000	Recovery	= 92.18%
Target Compounds			
1) T n-Nonane (C9)	2.674	5375062	38.196 ug/ml
2) T n-Decane (C10)	3.671	5715083	40.069 ug/ml
3) T A~Naphthalene (C11.7)	5.214	6857815	42.721 ug/ml
4) T n-Dodecane (C12)	5.646	6185430	43.320 ug/ml
5) T A~2-methylnaphthalene...	6.259	7037234	43.607 ug/ml
6) T n-Tetradecane (C14)	7.430	6686367	46.392 ug/ml
7) T n-Hexadecane (C16)	9.020	7061951	48.543 ug/ml
8) T n-Octadecane (C18)	10.456	7113878	47.807 ug/ml
10) T n-Eicosane (C20)	11.760	7015476	47.969 ug/ml
11) T n-Heneicosane (C21)	12.369	6893092	46.917 ug/ml
13) T n-Docosane (C22)	12.953	6831257	46.781 ug/ml
14) T n-Tetracosane (C24)	14.051	6693844	45.961 ug/ml
15) T n-Hexacosane (C26)	15.070	6450561	45.991 ug/ml
16) T n-Octacosane (C28)	16.015	6310646	46.530 ug/ml
17) T n-Tricontane (C30)	16.901	5887342	45.054 ug/mlm
18) T n-Dotriacontane (C32)	17.730	5476318	44.002 ug/mlm
19) T n-Tetratriacontane (C34)	18.511	4900361	40.572 ug/mlm
20) T n-Hexatriacontane (C36)	19.249	4129370	35.907 ug/mlm
21) T n-Octatriacontane (C38)	19.963	3793028	33.981 ug/mlm
22) T n-Tetracontane (C40)	20.815	3775294	33.133 ug/mlm

(f)=RT Delta > 1/2 Window

(m)=manual int.

Data Path : Z:\pestpcbsrv\HPCHEM1\FID_D\Data\FD121721AL\
 Data File : FD039993.D
 Signal(s) : FID2B.CH
 Acq On : 17 Dec 2021 11:53
 Operator : AJ\MA
 Sample : PB141482BS
 Misc :
 ALS Vial : 54 Sample Multiplier: 1

Instrument :

FID_D

ClientSampleId :

PB141482BS

Manual Integrations

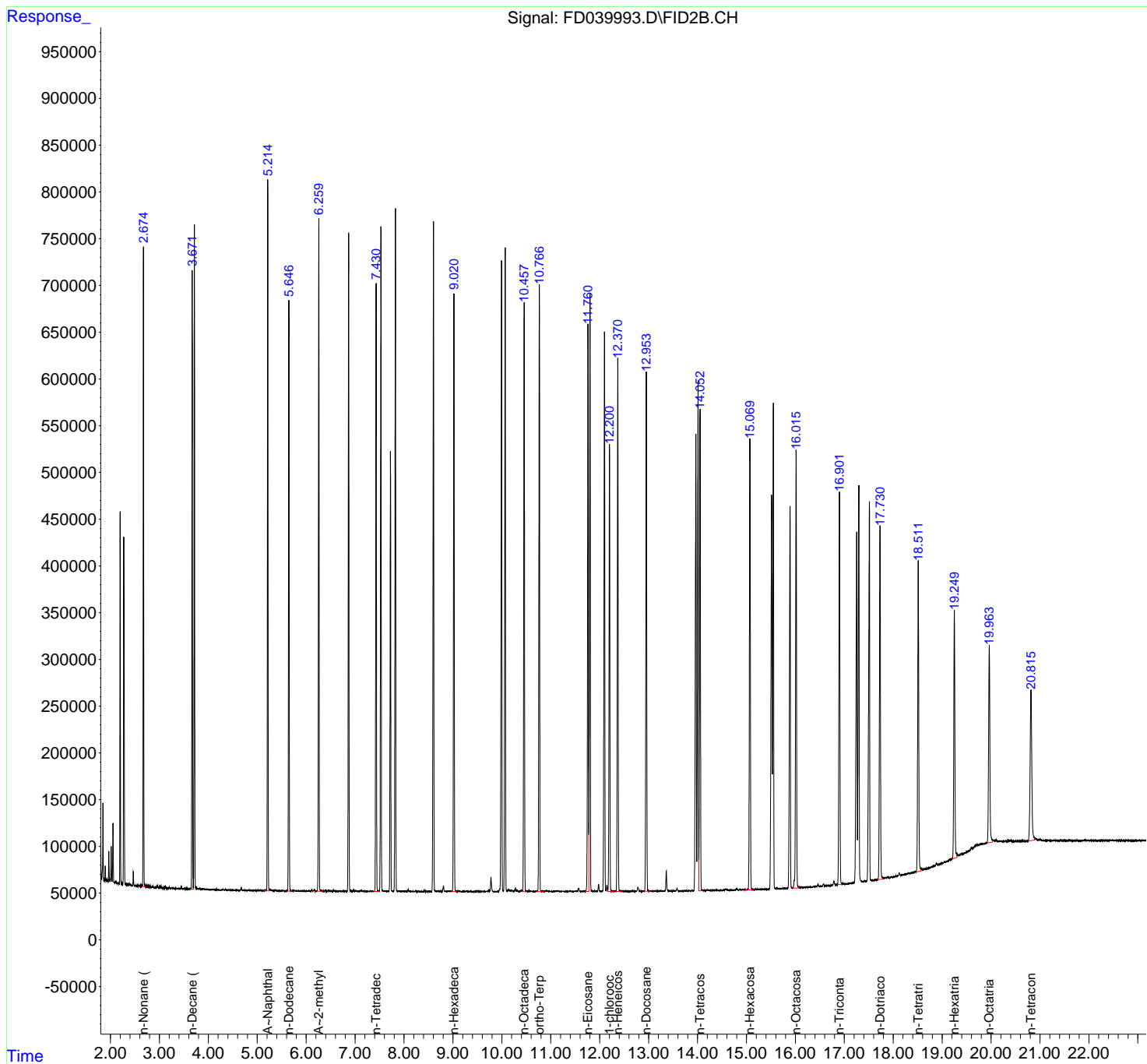
APPROVED

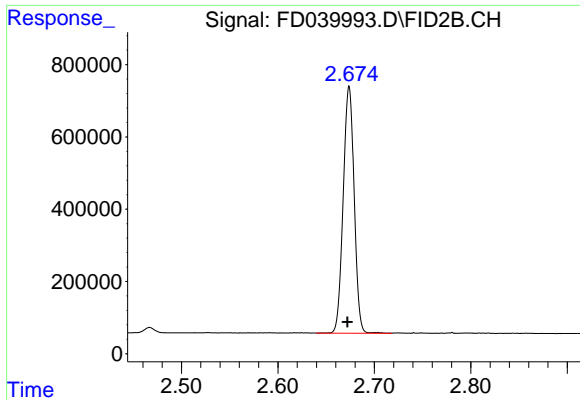
Reviewed By :Yogesh Patel 12/20/2021

Supervised By :Ankita Jodhani 12/23/2021

Integration File: autoint1.e
 Quant Time: Dec 17 23:39:52 2021
 Quant Method : Z:\pestpcbsrv\HPCHEM1\FID_D\methods\Aliphatic EPH 121521.M
 Quant Title : GC Extractables
 QLast Update : Wed Dec 15 16:44:55 2021
 Response via : Initial Calibration
 Integrator: ChemStation 6890 Scale Mode: Large solvent peaks clipped

Volume Inj. : 1 ul
 Signal Phase : Rxi-1ms
 Signal Info : 20M x 0.18mm x 0.18um





#1 n-Nonane (C9)

R.T.: 2.674 min
 Delta R.T.: 0.002 min
 Response: 5375062
 Conc: 38.20 ug/ml

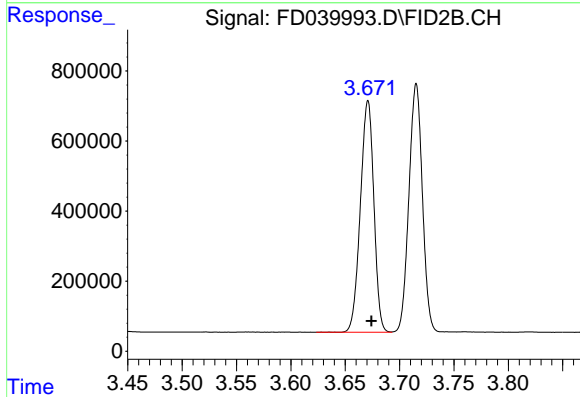
Instrument :

FID_D

ClientSampleId :
 PB141482BS

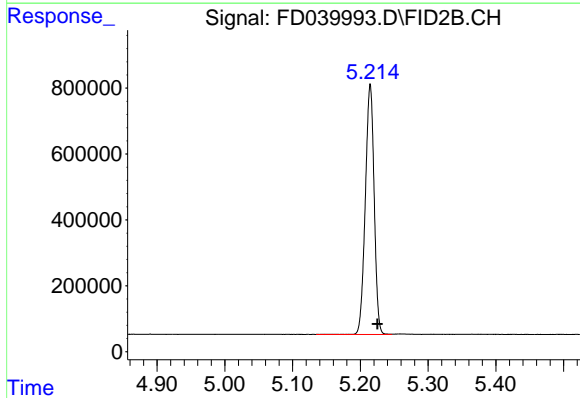
Manual Integrations
 APPROVED

Reviewed By :Yogesh Patel 12/20/2021
 Supervised By :Ankita Jodhani 12/23/2021



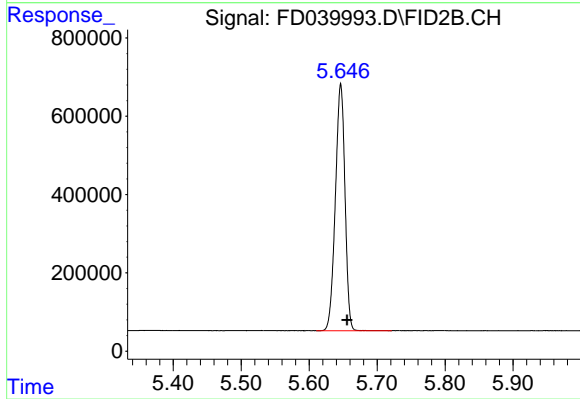
#2 n-Decane (C10)

R.T.: 3.671 min
 Delta R.T.: -0.003 min
 Response: 5715083
 Conc: 40.07 ug/ml



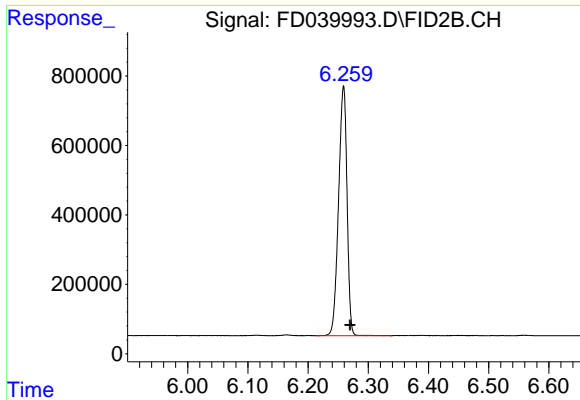
#3 A~Naphthalene (C11.7)

R.T.: 5.214 min
 Delta R.T.: -0.011 min
 Response: 6857815
 Conc: 42.72 ug/ml



#4 n-Dodecane (C12)

R.T.: 5.646 min
 Delta R.T.: -0.010 min
 Response: 6185430
 Conc: 43.32 ug/ml



#5 A~2-methylnaphthalene (C12.89)

R.T.: 6.259 min
 Delta R.T.: -0.011 min
 Response: 7037234
 Conc: 43.61 ug/ml

Instrument :

FID_D

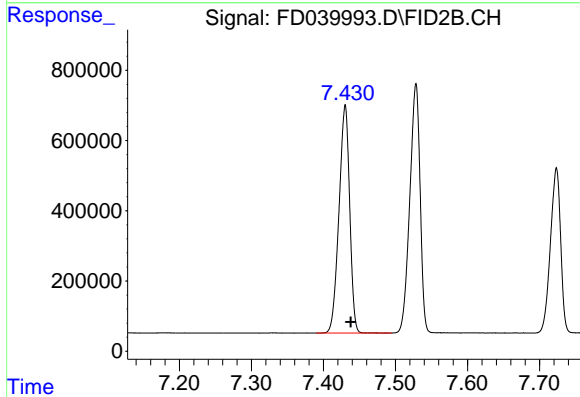
ClientSampleId :

PB141482BS

Manual Integrations

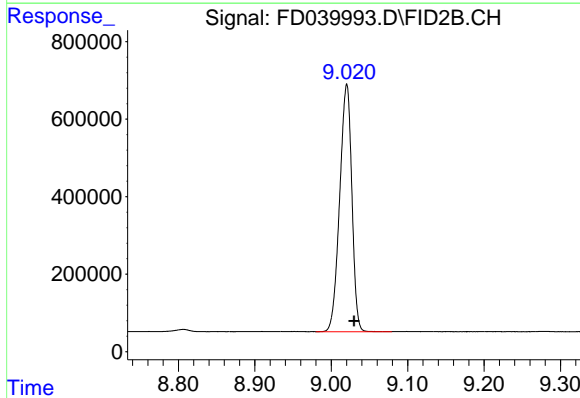
APPROVED

Reviewed By :Yogesh Patel 12/20/2021
 Supervised By :Ankita Jodhani 12/23/2021



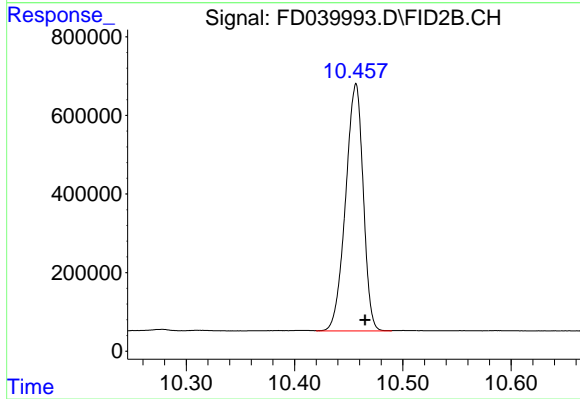
#6 n-Tetradecane (C14)

R.T.: 7.430 min
 Delta R.T.: -0.008 min
 Response: 6686367
 Conc: 46.39 ug/ml



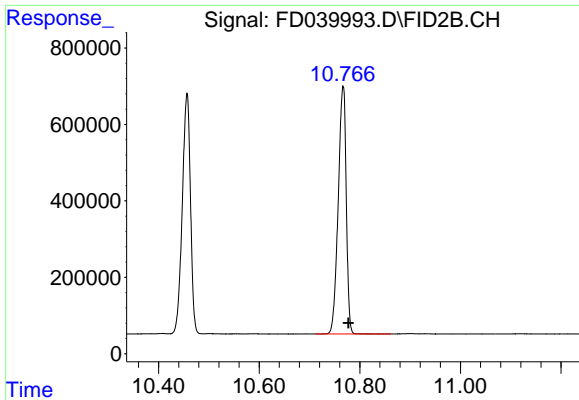
#7 n-Hexadecane (C16)

R.T.: 9.020 min
 Delta R.T.: -0.010 min
 Response: 7061951
 Conc: 48.54 ug/ml



#8 n-Octadecane (C18)

R.T.: 10.456 min
 Delta R.T.: -0.009 min
 Response: 7113878
 Conc: 47.81 ug/ml



#9 ortho-Terphenyl (SURR)

R.T.: 10.766 min
 Delta R.T.: -0.011 min
 Response: 7178201
 Conc: 45.72 ug/ml

Instrument :

FID_D

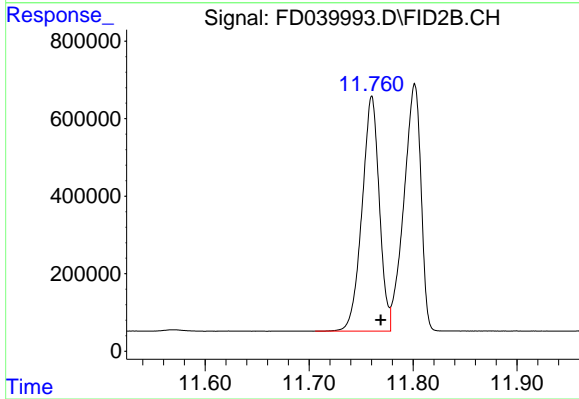
ClientSampleId :

PB141482BS

Manual Integrations

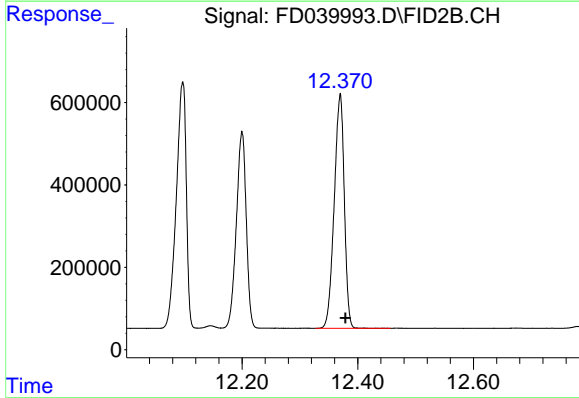
APPROVED

Reviewed By :Yogesh Patel 12/20/2021
 Supervised By :Ankita Jodhani 12/23/2021



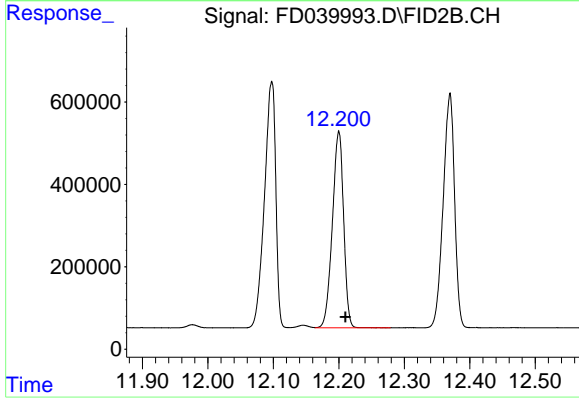
#10 n-Eicosane (C20)

R.T.: 11.760 min
 Delta R.T.: -0.009 min
 Response: 7015476
 Conc: 47.97 ug/ml



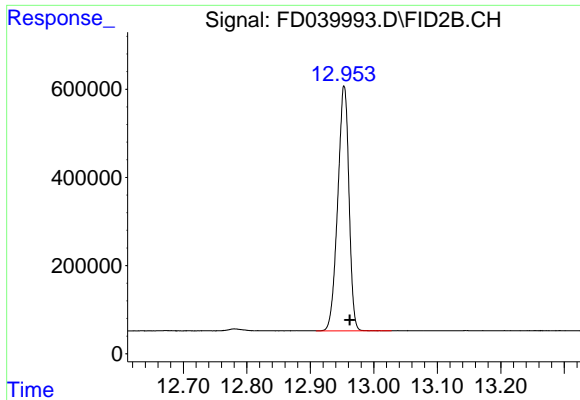
#11 n-Heneicosane (C21)

R.T.: 12.369 min
 Delta R.T.: -0.010 min
 Response: 6893092
 Conc: 46.92 ug/ml



#12 1-chlorooctadecane (SURR)

R.T.: 12.200 min
 Delta R.T.: -0.010 min
 Response: 5691533
 Conc: 46.09 ug/ml

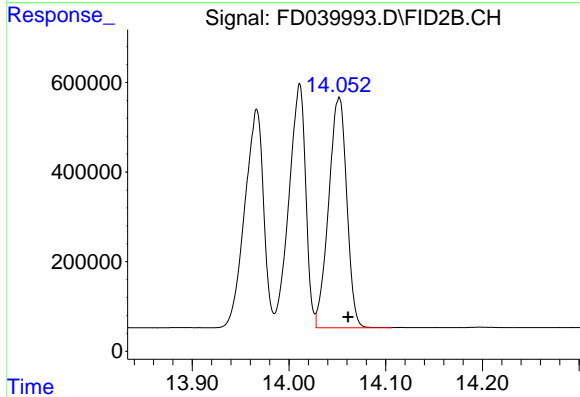


#13 n-Docosane (C22)
 R.T.: 12.953 min
 Delta R.T.: -0.009 min
 Response: 6831257
 Conc: 46.78 ug/ml

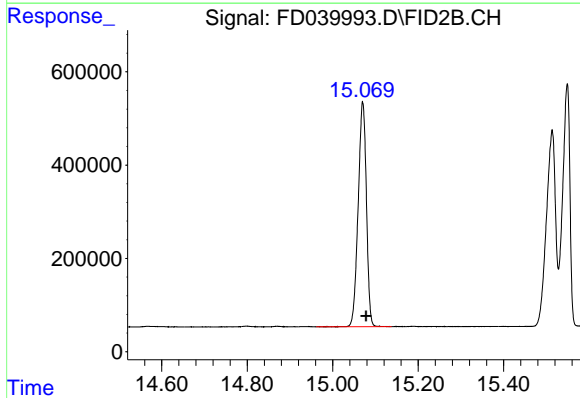
Instrument : FID_D
 ClientSampleId : PB141482BS

Manual Integrations
 APPROVED

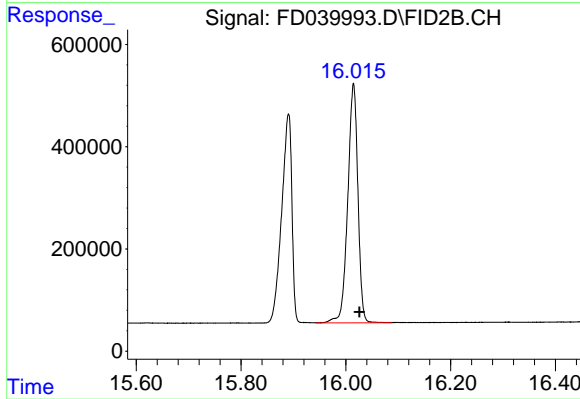
Reviewed By :Yogesh Patel 12/20/2021
 Supervised By :Ankita Jodhani 12/23/2021



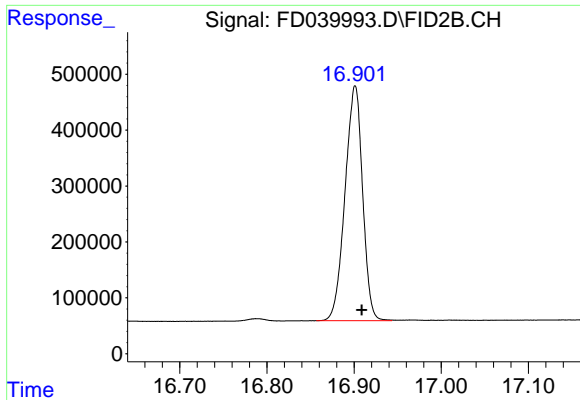
#14 n-Tetracosane (C24)
 R.T.: 14.051 min
 Delta R.T.: -0.010 min
 Response: 6693844
 Conc: 45.96 ug/ml



#15 n-Hexacosane (C26)
 R.T.: 15.070 min
 Delta R.T.: -0.008 min
 Response: 6450561
 Conc: 45.99 ug/ml



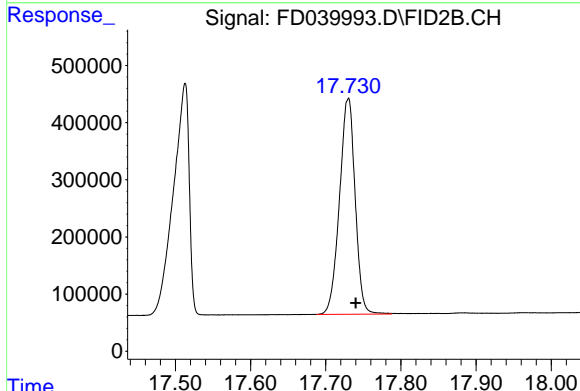
#16 n-Octacosane (C28)
 R.T.: 16.015 min
 Delta R.T.: -0.011 min
 Response: 6310646
 Conc: 46.53 ug/ml



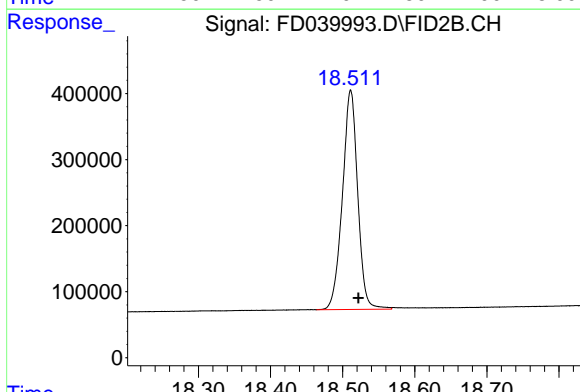
#17 n-Tricontane (C30)
 R.T.: 16.901 min
 Delta R.T.: -0.008 min
 Response: 5887342
 Conc: 45.05 ug/ml

Instrument : FID_D
 ClientSampleId : PB141482BS

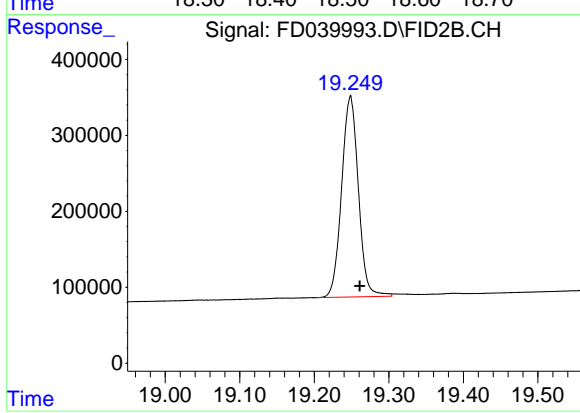
Manual Integrations
APPROVED
 Reviewed By :Yogesh Patel 12/20/2021
 Supervised By :Ankita Jodhani 12/23/2021



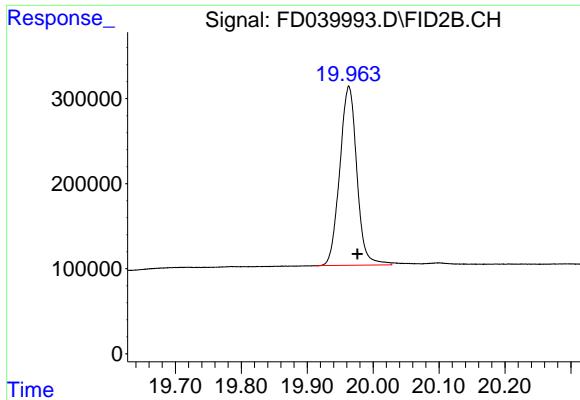
#18 n-Dotriacontane (C32)
 R.T.: 17.730 min
 Delta R.T.: -0.010 min
 Response: 5476318
 Conc: 44.00 ug/ml m



#19 n-Tetratriacontane (C34)
 R.T.: 18.511 min
 Delta R.T.: -0.011 min
 Response: 4900361
 Conc: 40.57 ug/ml m



#20 n-Hexatriacontane (C36)
 R.T.: 19.249 min
 Delta R.T.: -0.012 min
 Response: 4129370
 Conc: 35.91 ug/ml m



#21 n-Octatriacontane (C38)

R.T.: 19.963 min
 Delta R.T.: -0.013 min
 Response: 3793028
 Conc: 33.98 ug/ml

Instrument :

FID_D

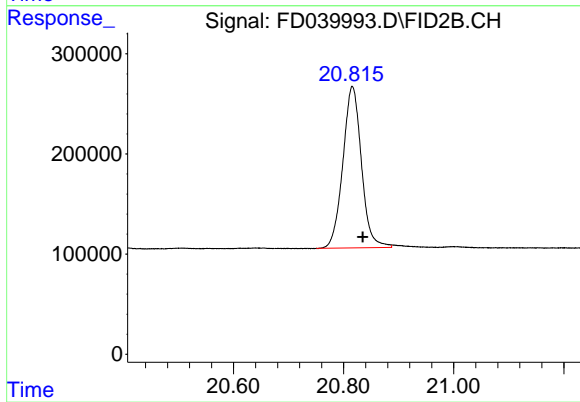
ClientSampleId :

PB141482BS

Manual Integrations

APPROVED

Reviewed By :Yogesh Patel 12/20/2021
 Supervised By :Ankita Jodhani 12/23/2021



#22 n-Tetracontane (C40)

R.T.: 20.815 min
 Delta R.T.: -0.020 min
 Response: 3775294
 Conc: 33.13 ug/ml m