

Data Path : Z:\pestpcbsrv\HPCHEM1\FID\_D\Data\FD122322AR\  
 Data File : FD044690.D  
 Signal(s) : FID2B.ch  
 Acq On : 23 Dec 2022 18:18  
 Operator : YP/AJ  
 Sample : PB149876BL  
 Misc :  
 ALS Vial : 59 Sample Multiplier: 1

Instrument :  
 FID\_D  
 ClientSampleId :

Integration File: autoint1.e  
 Quant Time: Dec 25 14:27:31 2022  
 Quant Method : Z:\pestpcbsrv\HPCHEM1\FID\_D\methods\Aromatic EPH 112922.M  
 Quant Title : GC Extractables  
 QLast Update : Tue Nov 29 00:29:41 2022  
 Response via : Initial Calibration  
 Integrator: ChemStation

Volume Inj. : 1 µl  
 Signal Phase : Rxi-1ms  
 Signal Info : 20M x 0.18mm x 0.18µm

Compound	R.T.	Response	Conc Units
-----			
System Monitoring Compounds			
4) S 2-Bromonaphthalene (S...	7.684	5833960	44.953 ug/ml
Spiked Amount 50.000		Recovery =	89.91%
6) S 2-Fluorobiphenyl (SURR)	8.541	3386664	38.347 ug/ml
Spiked Amount 50.000 Range 0 - 131		Recovery =	76.69%
11) S ortho-Terphenyl (SURR)	11.568	6311857	38.784 ug/ml
Spiked Amount 50.000		Recovery =	77.57%
Target Compounds			
18) T Benzo[a]pyrene (C31.34)	16.665	48415	0.375 ug/ml
19) T Indeno[1,2,3-cd]pyren...	18.018	263998	2.071 ug/ml
20) T Dibenz[a,h]anthracene...	18.061	348770	2.772 ug/ml
21) T Benzo[g,h,i]perylene ...	18.269	263679	2.050 ug/ml
-----			

(f)=RT Delta > 1/2 Window

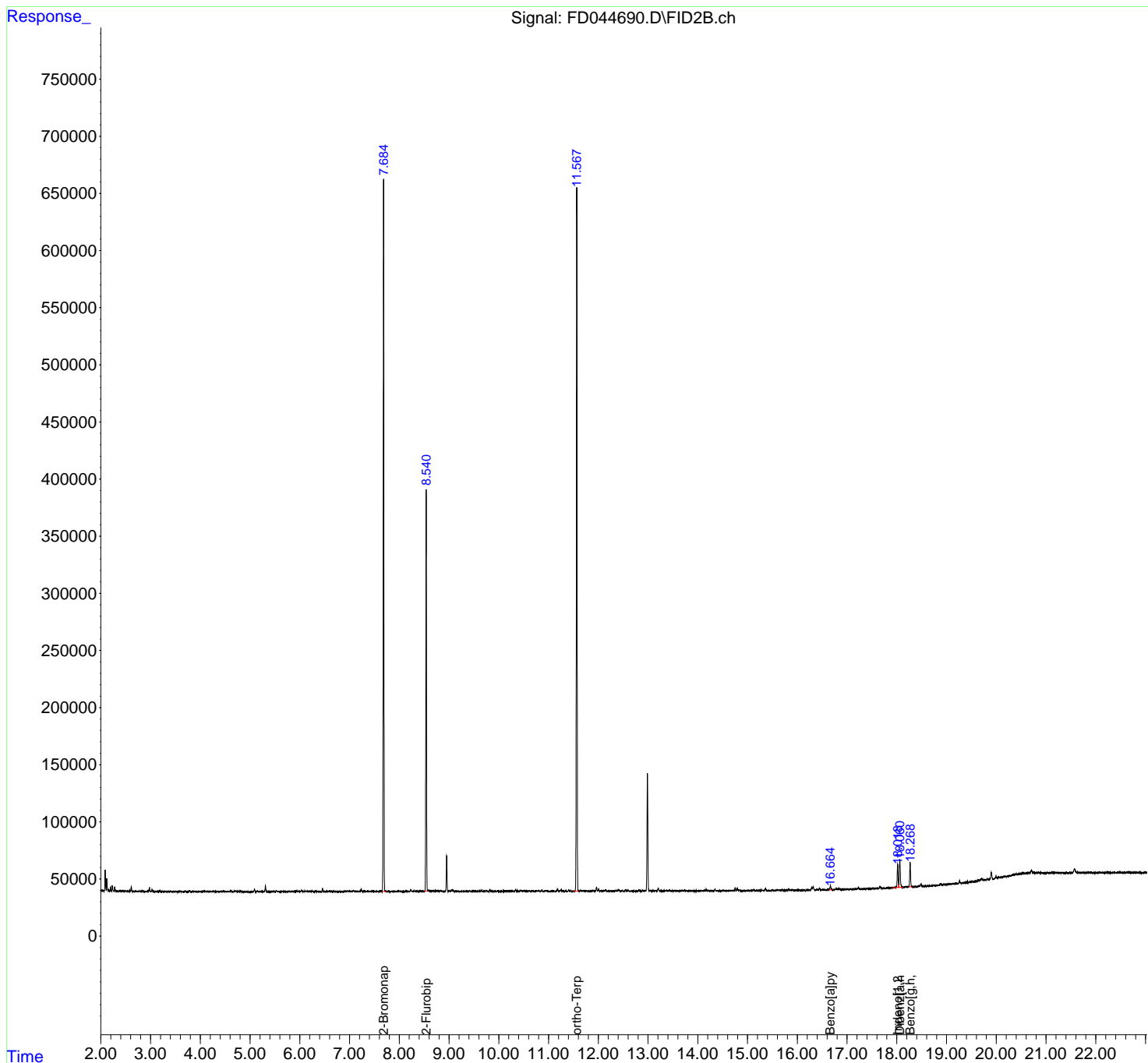
(m)=manual int.

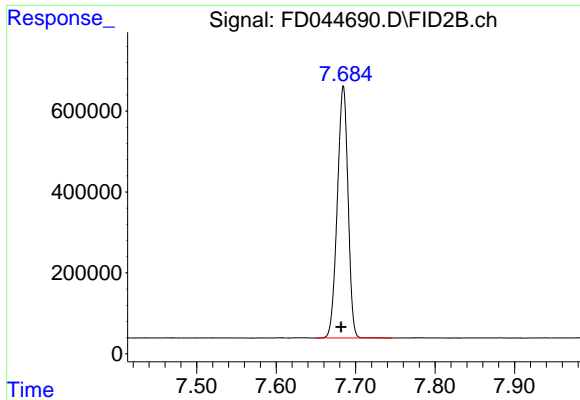
Data Path : Z:\pestpcbsrv\HPCHEM1\FID\_D\Data\FD122322AR\  
Data File : FD044690.D  
Signal(s) : FID2B.ch  
Acq On : 23 Dec 2022 18:18  
Operator : YP/AJ  
Sample : PB149876BL  
Misc :  
ALS Vial : 59 Sample Multiplier: 1

Instrument :  
FID\_D  
ClientSampleId :

Integration File: autoint1.e  
Quant Time: Dec 25 14:27:31 2022  
Quant Method : Z:\pestpcbsrv\HPCHEM1\FID\_D\methods\Aromatic EPH 112922.M  
Quant Title : GC Extractables  
QLast Update : Tue Nov 29 00:29:41 2022  
Response via : Initial Calibration  
Integrator: ChemStation

Volume Inj. : 1 µl  
Signal Phase : Rxi-1ms  
Signal Info : 20M x 0.18mm x 0.18µm

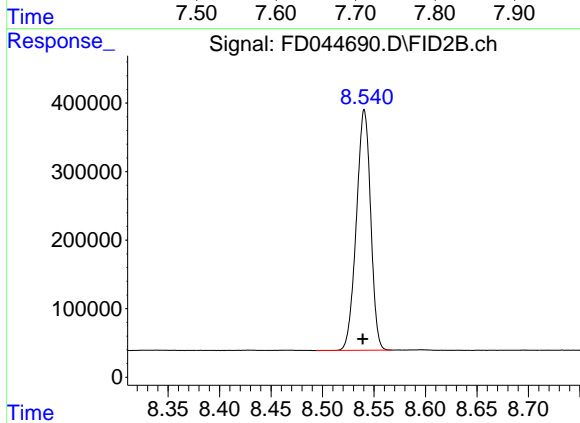




#4 2-Bromonaphthalene (SURRE)

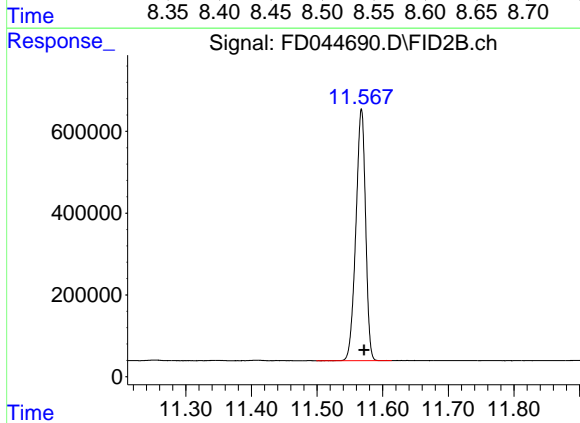
R.T.: 7.684 min  
 Delta R.T.: 0.003 min  
 Response: 5833960  
 Conc: 44.95 ug/ml

Instrument :  
 FID\_D  
 ClientSampleId :



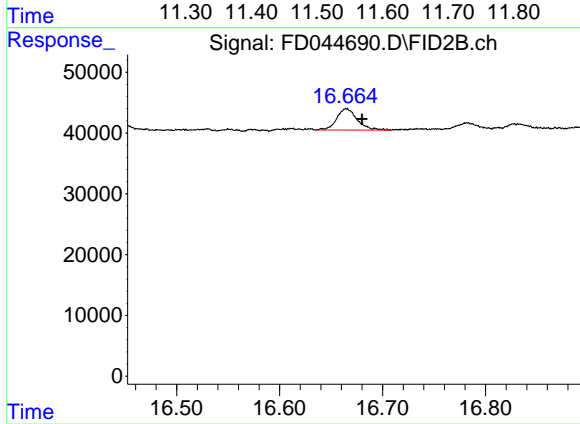
#6 2-Fluorobiphenyl (SURRE)

R.T.: 8.541 min  
 Delta R.T.: 0.001 min  
 Response: 3386664  
 Conc: 38.35 ug/ml



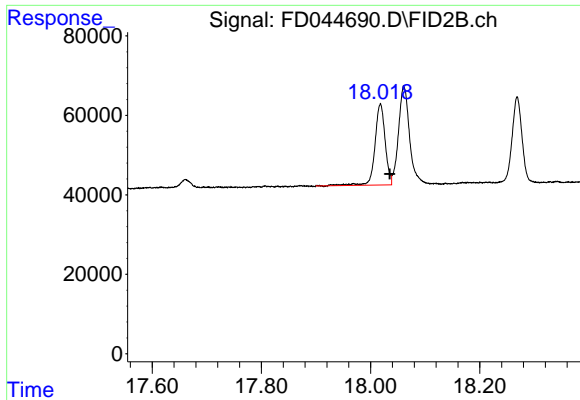
#11 ortho-Terphenyl (SURRE)

R.T.: 11.568 min  
 Delta R.T.: -0.004 min  
 Response: 6311857  
 Conc: 38.78 ug/ml



#18 Benzo[a]pyrene (C31.34)

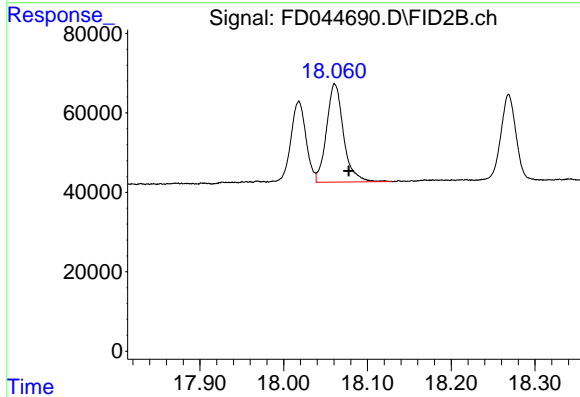
R.T.: 16.665 min  
 Delta R.T.: -0.015 min  
 Response: 48415  
 Conc: 0.37 ug/ml



#19 Indeno[1,2,3-cd]pyrene (C35.01)

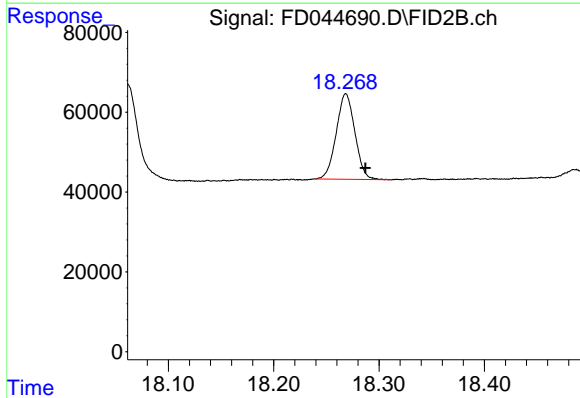
R.T.: 18.018 min  
Delta R.T.: -0.017 min  
Response: 263998  
Conc: 2.07 ug/ml

Instrument :  
FID\_D  
ClientSampleId :



#20 Dibenz[a,h]anthracene (C30.36)

R.T.: 18.061 min  
Delta R.T.: -0.016 min  
Response: 348770  
Conc: 2.77 ug/ml



#21 Benzo[g,h,i]perylene (C34.01)

R.T.: 18.269 min  
Delta R.T.: -0.019 min  
Response: 263679  
Conc: 2.05 ug/ml