

Data Path : Z:\pestpcbsrv\HPCHEM1\FID_D\Data\FD122322AR\
 Data File : FD044702.D
 Signal(s) : FID2B.ch
 Acq On : 24 Dec 2022 03:37
 Operator : YP/AJ
 Sample : N6148-03
 Misc :
 ALS Vial : 69 Sample Multiplier: 1

Instrument :
 FID_D
 ClientSampleId :

Integration File: autoint1.e
 Quant Time: Dec 25 14:29:10 2022
 Quant Method : Z:\pestpcbsrv\HPCHEM1\FID_D\methods\Aromatic EPH 112922.M
 Quant Title : GC Extractables
 QLast Update : Tue Nov 29 00:29:41 2022
 Response via : Initial Calibration
 Integrator: ChemStation

Volume Inj. : 1 µl
 Signal Phase : Rxi-1ms
 Signal Info : 20M x 0.18mm x 0.18µm

Compound	R.T.	Response	Conc Units

System Monitoring Compounds			
4) S 2-Bromonaphthalene (S...	7.664	3961526	30.525 ug/ml
Spiked Amount 50.000		Recovery =	61.05%
6) S 2-Fluorobiphenyl (SURR)	8.521	3700822	41.904 ug/ml
Spiked Amount 50.000 Range 0 - 131		Recovery =	83.81%
11) S ortho-Terphenyl (SURR)	11.550	4748213	29.176 ug/ml
Spiked Amount 50.000		Recovery =	58.35%
Target Compounds			
12) T Fluoranthene (C21.85)	12.583	71289	0.500 ug/ml
13) T Pyrene (C20.8)	12.877	54742	0.393 ug/ml
14) T Benzo[a]anthracene (C...	14.777	35568	0.275 ug/ml
15) T Chrysene (C27.41)	14.777	35568	0.264 ug/ml
16) T benzo[b]fluoranthene ...	16.276	26307	0.200 ug/ml
17) T Bnezo[k]fluoranthene ...	16.276f	26307	0.202 ug/ml
19) T Indeno[1,2,3-cd]pyren...	18.064	104284	0.818 ug/ml
20) T Dibenz[a,h]anthracene...	18.064	104284	0.829 ug/ml

(f)=RT Delta > 1/2 Window

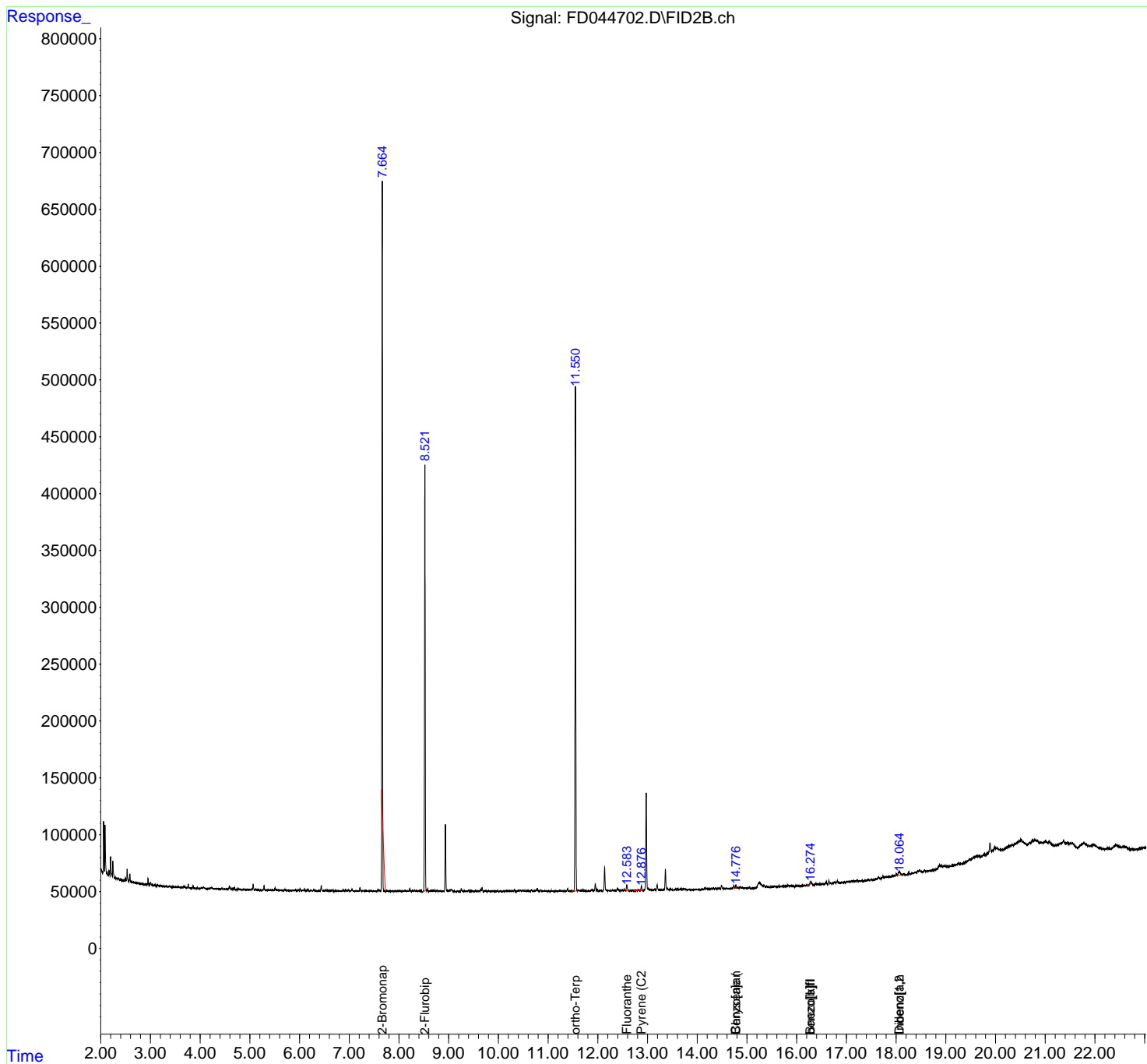
(m)=manual int.

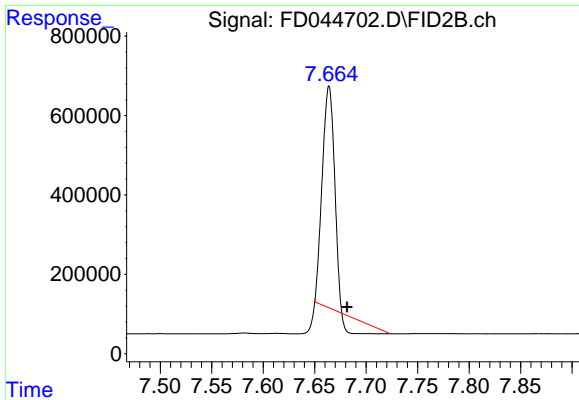
Data Path : Z:\pestpcbsrv\HPCHEM1\FID_D\Data\FD122322AR\
Data File : FD044702.D
Signal(s) : FID2B.ch
Acq On : 24 Dec 2022 03:37
Operator : YP/AJ
Sample : N6148-03
Misc :
ALS Vial : 69 Sample Multiplier: 1

Instrument :
FID_D
ClientSampleId :

Integration File: autoint1.e
Quant Time: Dec 25 14:29:10 2022
Quant Method : Z:\pestpcbsrv\HPCHEM1\FID_D\methods\Aromatic EPH 112922.M
Quant Title : GC Extractables
QLast Update : Tue Nov 29 00:29:41 2022
Response via : Initial Calibration
Integrator: ChemStation

Volume Inj. : 1 µl
Signal Phase : Rxi-1ms
Signal Info : 20M x 0.18mm x 0.18µm

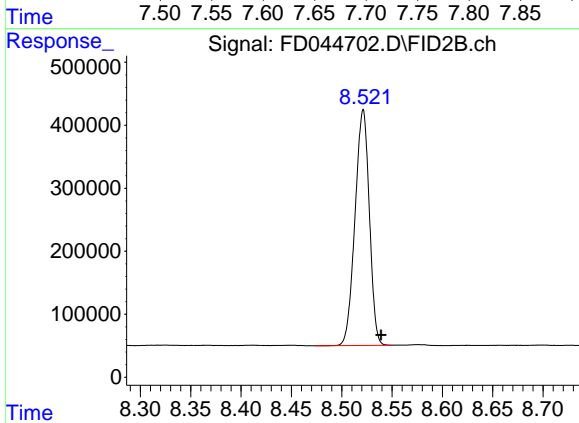




#4 2-Bromonaphthalene (SURR)

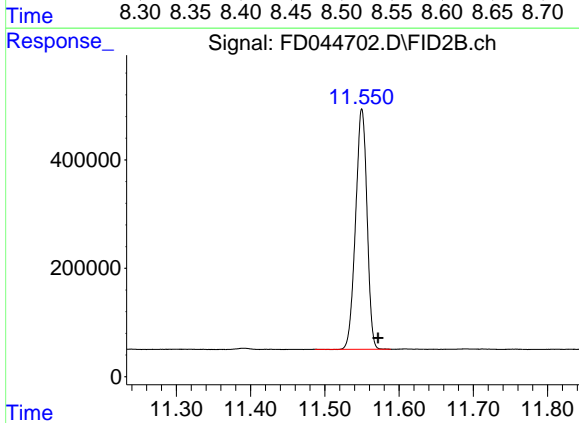
R.T.: 7.664 min
 Delta R.T.: -0.018 min
 Response: 3961526
 Conc: 30.52 ug/ml

Instrument :
 FID_D
 ClientSampleId :



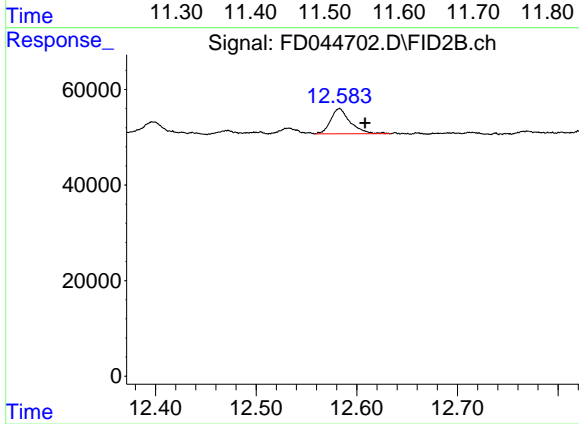
#6 2-Fluorobiphenyl (SURR)

R.T.: 8.521 min
 Delta R.T.: -0.018 min
 Response: 3700822
 Conc: 41.90 ug/ml



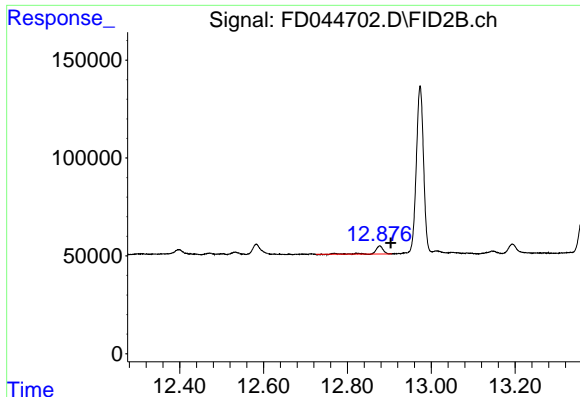
#11 ortho-Terphenyl (SURR)

R.T.: 11.550 min
 Delta R.T.: -0.022 min
 Response: 4748213
 Conc: 29.18 ug/ml



#12 Fluoranthene (C21.85)

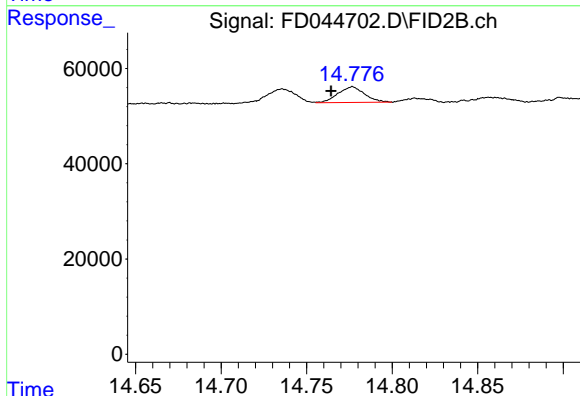
R.T.: 12.583 min
 Delta R.T.: -0.025 min
 Response: 71289
 Conc: 0.50 ug/ml



#13 Pyrene (C20.8)

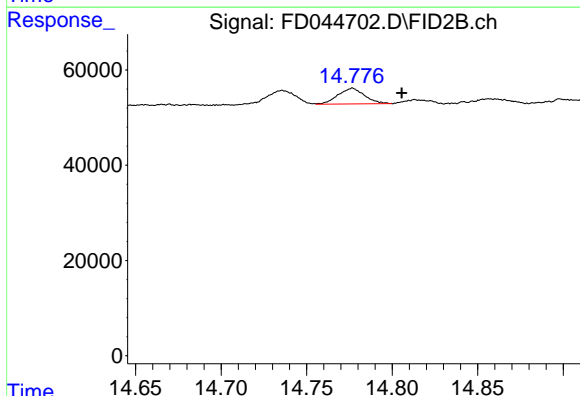
R.T.: 12.877 min
 Delta R.T.: -0.026 min
 Response: 54742
 Conc: 0.39 ug/ml

Instrument :
 FID_D
 ClientSampleId :



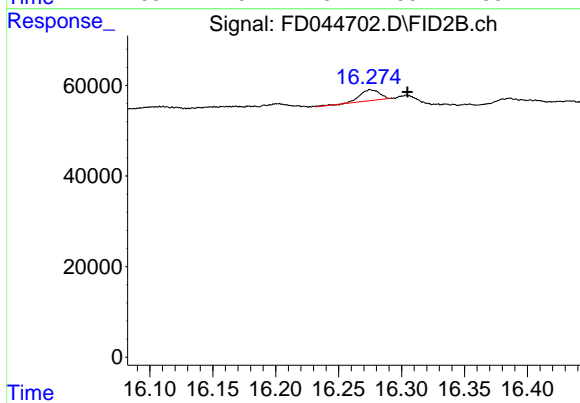
#14 Benzo[a]anthracene (C26.37)

R.T.: 14.777 min
 Delta R.T.: 0.012 min
 Response: 35568
 Conc: 0.27 ug/ml



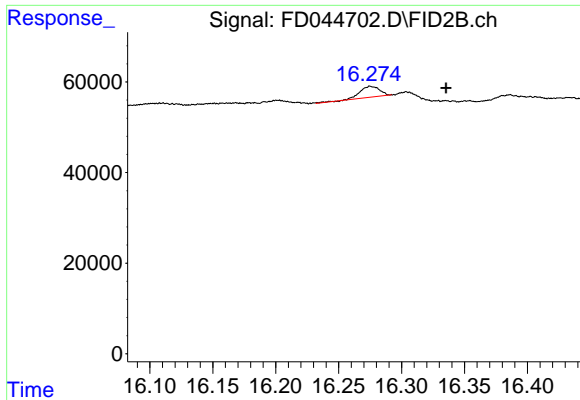
#15 Chrysene (C27.41)

R.T.: 14.777 min
 Delta R.T.: -0.029 min
 Response: 35568
 Conc: 0.26 ug/ml



#16 benzo[b]fluoranthene (C30.41)

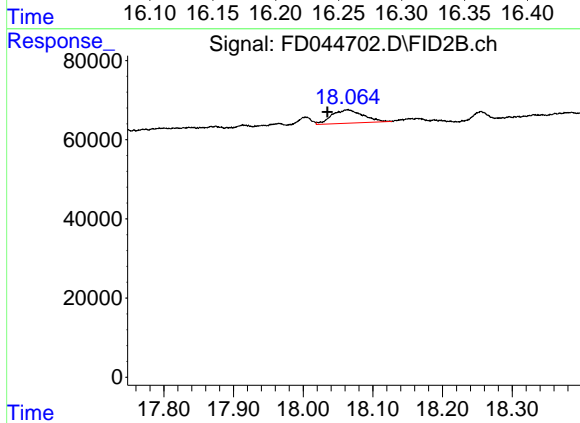
R.T.: 16.276 min
 Delta R.T.: -0.029 min
 Response: 26307
 Conc: 0.20 ug/ml



#17 Bnezo[k]fluoranthene (C30.14)

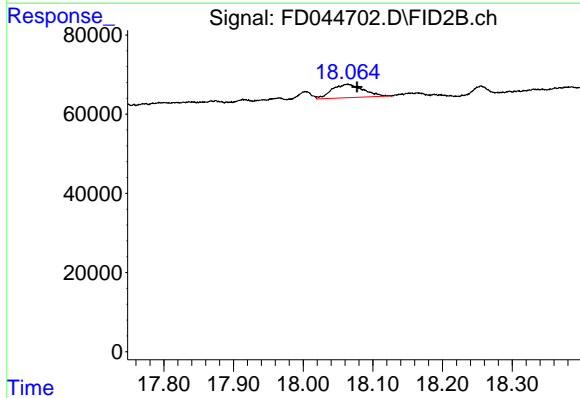
R.T.: 16.276 min
 Delta R.T.: -0.060 min
 Response: 26307
 Conc: 0.20 ug/ml

Instrument :
 FID_D
 ClientSampleId :



#19 Indeno[1,2,3-cd]pyrene (C35.01)

R.T.: 18.064 min
 Delta R.T.: 0.029 min
 Response: 104284
 Conc: 0.82 ug/ml



#20 Dibenz[a,h]anthracene (C30.36)

R.T.: 18.064 min
 Delta R.T.: -0.014 min
 Response: 104284
 Conc: 0.83 ug/ml