

Data Path : Z:\pestpcbsrv\HPCHEM1\FID_D\Data\FD122422AL\
 Data File : FD044726.D
 Signal(s) : FID2B.ch
 Acq On : 25 Dec 2022 00:05
 Operator : YP/AJ
 Sample : I.BLK
 Misc :
 ALS Vial : 51 Sample Multiplier: 1

Instrument :
 FID_D
 ClientSampleId :
 I.BLK

Integration File: autoint1.e
 Quant Time: Dec 25 17:29:22 2022
 Quant Method : Z:\pestpcbsrv\HPCHEM1\FID_D\methods\Aliphatic EPH 122422.M
 Quant Title : GC Extractables
 QLast Update : Sun Dec 25 16:54:40 2022
 Response via : Initial Calibration
 Integrator: ChemStation

Volume Inj. : 1 ul
 Signal Phase : Rxi-1ms
 Signal Info : 20M x 0.18mm x 0.18um

Compound	R.T.	Response	Conc Units

System Monitoring Compounds			
Target Compounds			

(f)=RT Delta > 1/2 Window

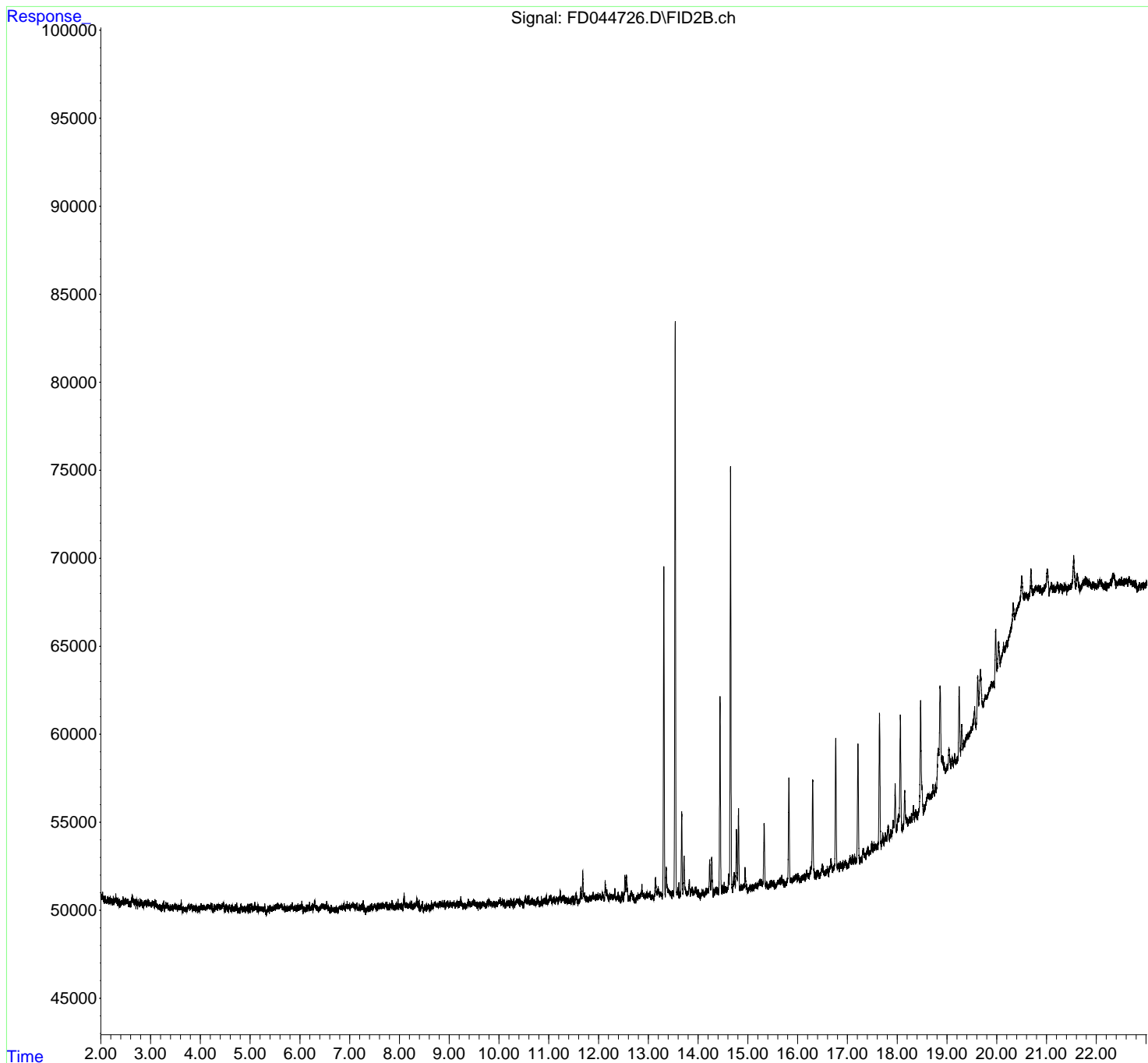
(m)=manual int.

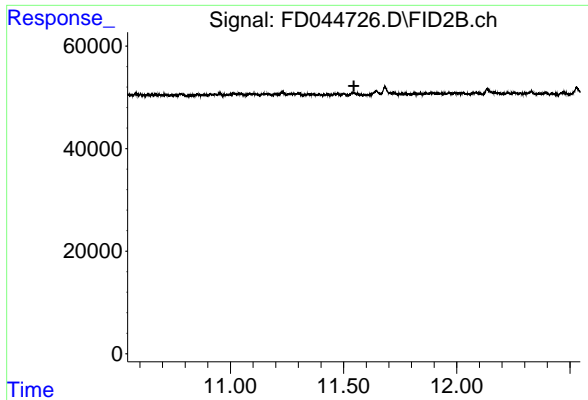
Data Path : Z:\pestpcbsrv\HPCHEM1\FID_D\Data\FD122422AL\
 Data File : FD044726.D
 Signal(s) : FID2B.ch
 Acq On : 25 Dec 2022 00:05
 Operator : YP/AJ
 Sample : I.BLK
 Misc :
 ALS Vial : 51 Sample Multiplier: 1

Instrument :
 FID_D
 ClientSampleId :
 I.BLK

Integration File: autoint1.e
 Quant Time: Dec 25 17:29:22 2022
 Quant Method : Z:\pestpcbsrv\HPCHEM1\FID_D\methods\Aliphatic EPH 122422.M
 Quant Title : GC Extractables
 QLast Update : Sun Dec 25 16:54:40 2022
 Response via : Initial Calibration
 Integrator: ChemStation

Volume Inj. : 1 ul
 Signal Phase : Rxi-1ms
 Signal Info : 20M x 0.18mm x 0.18um

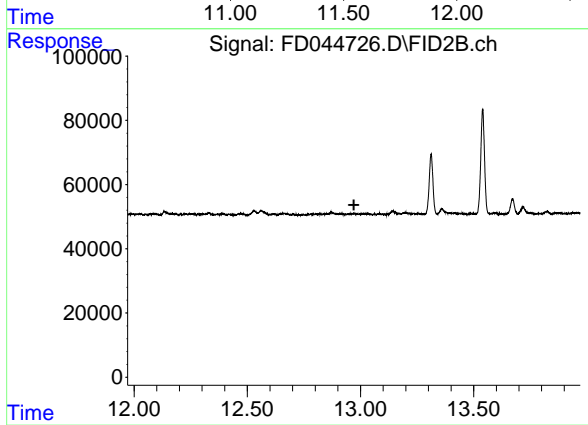




#9 ortho-Terphenyl (SURR)

R.T.: 0.000 min
Exp R.T. : 11.545 min
Response: 0
Conc: N.D.

Instrument :
FID_D
ClientSampleId :
I.BLK



#12 1-chlorooctadecane (SURR)

R.T.: 0.000 min
Exp R.T. : 12.971 min
Response: 0
Conc: N.D.