

Data Path : Z:\pestpcbsrv\HPCHEM1\FID_D\Data\FD123021AR\
Data File : FD040296.D
Signal(s) : FID2B.CH
Acq On : 30 Dec 2021 12:25
Operator : AJ\MA
Sample : MECL2
Misc :
ALS Vial : 51 Sample Multiplier: 1

Instrument :
FID_D
ClientSampleId :
MECL2

Integration File: autoint1.e
Quant Time: Dec 30 16:53:45 2021
Quant Method : Z:\pestpcbsrv\HPCHEM1\FID_D\methods\Aromatic EPH 123021.M
Quant Title : GC Extractables
QLast Update : Thu Dec 30 16:15:14 2021
Response via : Initial Calibration
Integrator: ChemStation 6890 Scale Mode: Large solvent peaks clipped

Volume Inj. : 1 µl
Signal Phase : Rxi-1ms
Signal Info : 20M x 0.18mm x 0.18µm

Compound	R.T.	Response	Conc Units

System Monitoring Compounds			
Target Compounds			

(f)=RT Delta > 1/2 Window

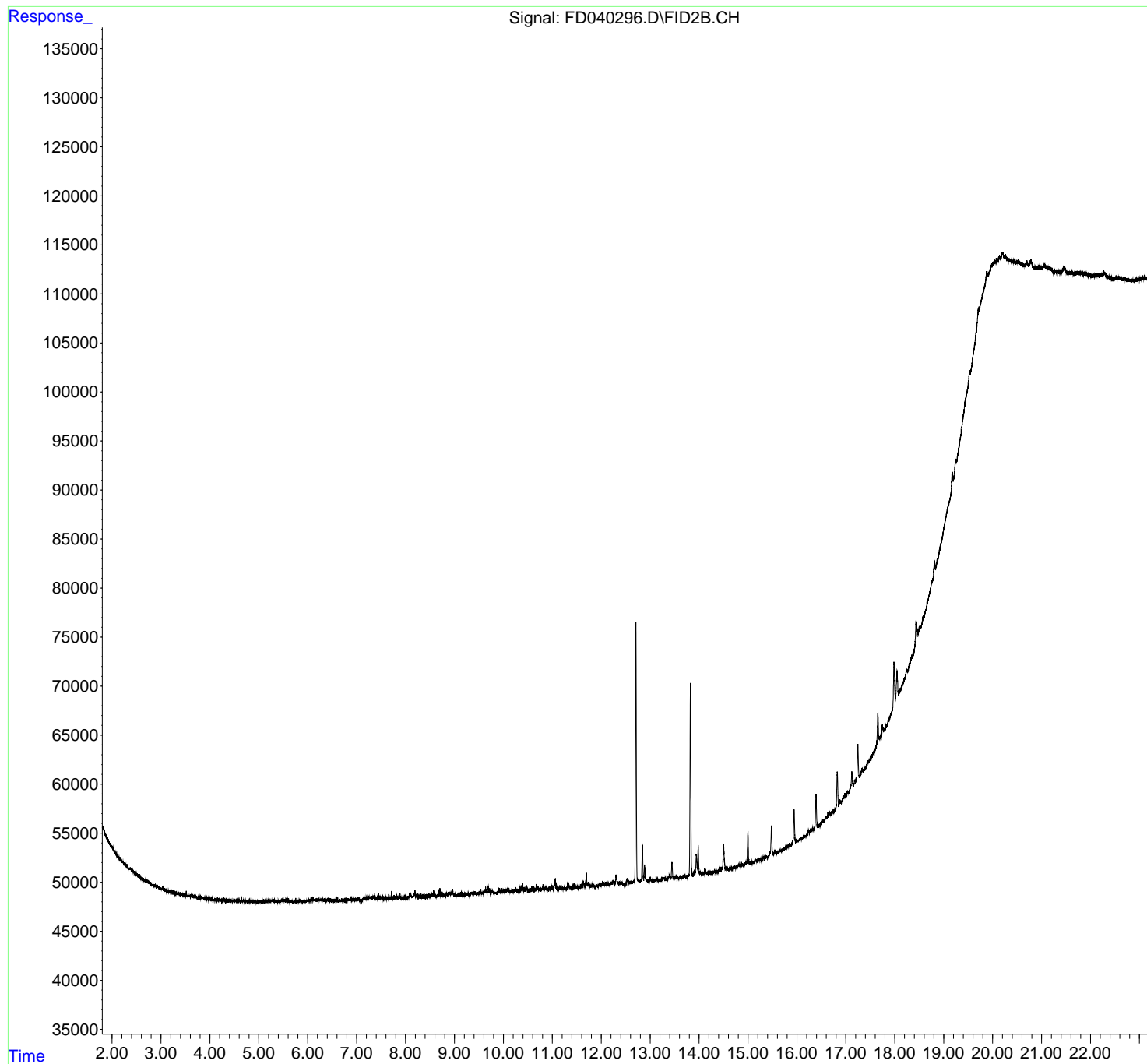
(m)=manual int.

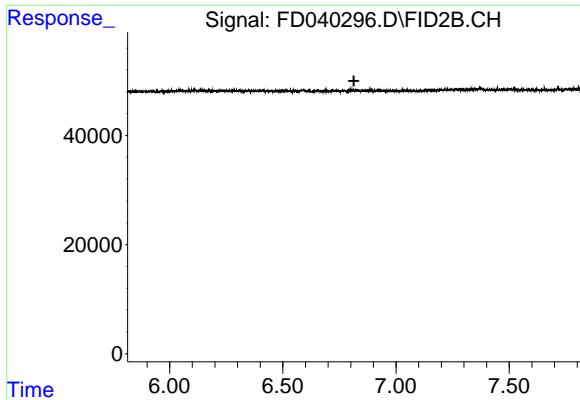
Data Path : Z:\pestpcbsrv\HPCHEM1\FID_D\Data\FD123021AR\
Data File : FD040296.D
Signal(s) : FID2B.CH
Acq On : 30 Dec 2021 12:25
Operator : AJ\MA
Sample : MECL2
Misc :
ALS Vial : 51 Sample Multiplier: 1

Instrument :
FID_D
ClientSampleId :
MECL2

Integration File: autoint1.e
Quant Time: Dec 30 16:53:45 2021
Quant Method : Z:\pestpcbsrv\HPCHEM1\FID_D\methods\Aromatic EPH 123021.M
Quant Title : GC Extractables
QLast Update : Thu Dec 30 16:15:14 2021
Response via : Initial Calibration
Integrator: ChemStation 6890 Scale Mode: Large solvent peaks clipped

Volume Inj. : 1 μ l
Signal Phase : Rxi-1ms
Signal Info : 20M x 0.18mm x 0.18 μ m

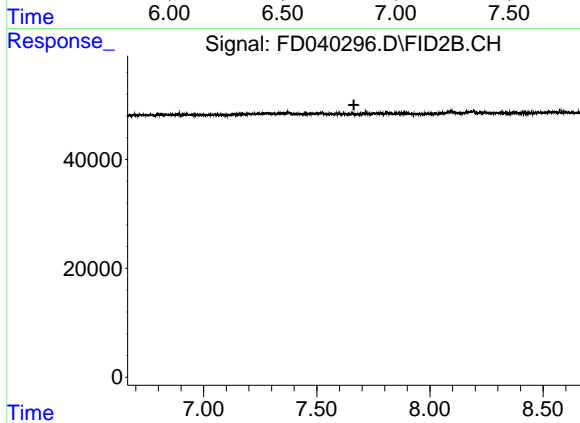




#4 2-Bromonaphthalene (SURRE)

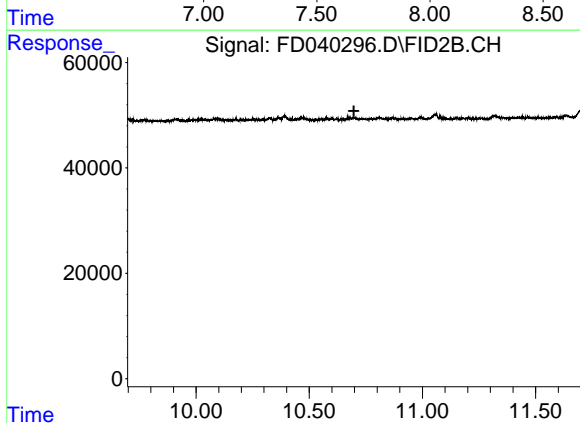
R.T.: 0.000 min
Exp R.T. : 6.814 min
Response: 0
Conc: N.D.

Instrument :
FID_D
ClientSampleId :
MECL2



#6 2-Fluorobiphenyl (SURRE)

R.T.: 0.000 min
Exp R.T. : 7.664 min
Response: 0
Conc: N.D.



#11 ortho-Terphenyl (SURRE)

R.T.: 0.000 min
Exp R.T. : 10.697 min
Response: 0
Conc: N.D.