

Data Path : P:\HPCHEM1\FID D\Data\FD021618AR\
 Data File : FD020051.D
 Signal(s) : FID2B.CH
 Acq On : 16 Feb 2018 18:21
 Operator : UA/AJ
 Sample : I.BLK
 Misc :
 ALS Vial : 51 Sample Multiplier: 1

Integration File: autoint1.e
 Quant Time: Feb 16 23:35:22 2018
 Quant Method : P:\HPCHEM1\FID_D\methods\Aromatic EPH 011818.M
 Quant Title : GC Extractables
 QLast Update : Fri Jan 19 04:27:29 2018
 Response via : Initial Calibration
 Integrator: ChemStation 6890 Scale Mode: Large solvent peaks clipped

Volume Inj. : 1 µl
 Signal Phase : Rxi-lms
 Signal Info : 20M x 0.18mm x 0.18µm

Compound	R.T.	Response	Conc Units

System Monitoring Compounds			
Target Compounds			
14) T Benzo[a]anthracene (C...	14.485	64063	0.612 ug/ml
15) T Chrysene (C27.41)	14.520	71427	0.661 ug/ml
16) T benzo[b]fluoranthene ...	16.015	109363	1.016 ug/ml
18) T Benzo[a]pyrene (C31.34)	16.479f	138940	1.275 ug/ml
19) T Indeno[1,2,3-cd]pyren...	17.782	126481	1.279 ug/ml
20) T Dibenz[a,h]anthracene...	17.870f	156212	1.363 ug/ml

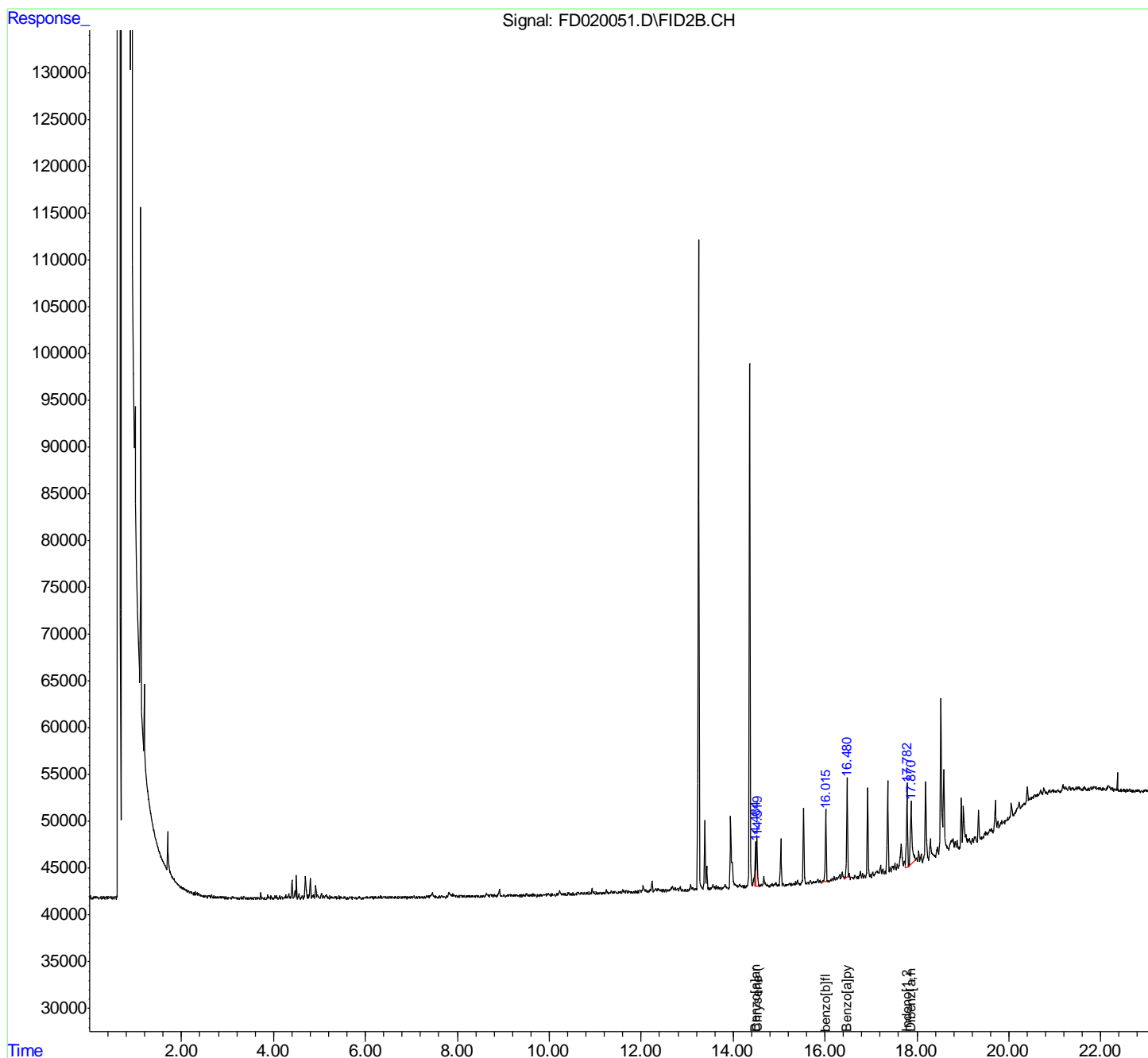
(f)=RT Delta > 1/2 Window

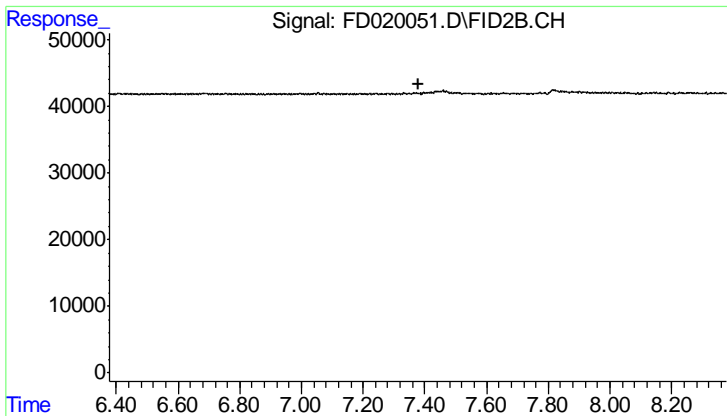
(m)=manual int.

Data Path : P:\HPCHEM1\FID D\Data\FD021618AR\
 Data File : FD020051.D
 Signal(s) : FID2B.CH
 Acq On : 16 Feb 2018 18:21
 Operator : UA/AJ
 Sample : I.BLK
 Misc :
 ALS Vial : 51 Sample Multiplier: 1

Integration File: autoint1.e
 Quant Time: Feb 16 23:35:22 2018
 Quant Method : P:\HPCHEM1\FID_D\methods\Aromatic EPH 011818.M
 Quant Title : GC Extractables
 QLast Update : Fri Jan 19 04:27:29 2018
 Response via : Initial Calibration
 Integrator: ChemStation 6890 Scale Mode: Large solvent peaks clipped

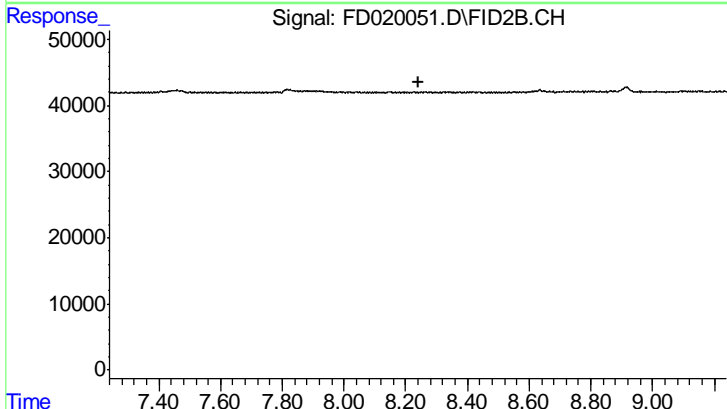
Volume Inj. : 1 µl
 Signal Phase : Rxi-lms
 Signal Info : 20M x 0.18mm x 0.18µm





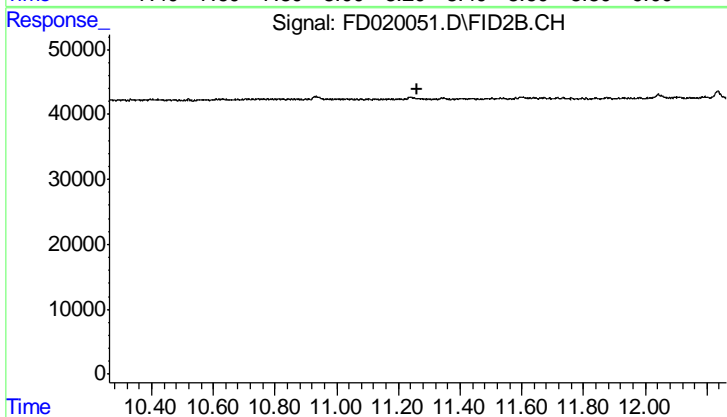
#4 2-Bromonaphthalene (SURR)

R.T.: 0.000 min
 Exp R.T.: 7.378 min
 Response: 0
 Conc: N.D.



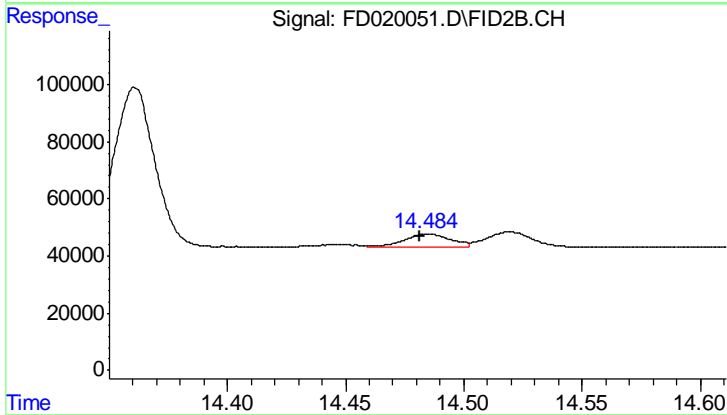
#6 2-Fluorobiphenyl (SURR)

R.T.: 0.000 min
 Exp R.T.: 8.240 min
 Response: 0
 Conc: N.D.



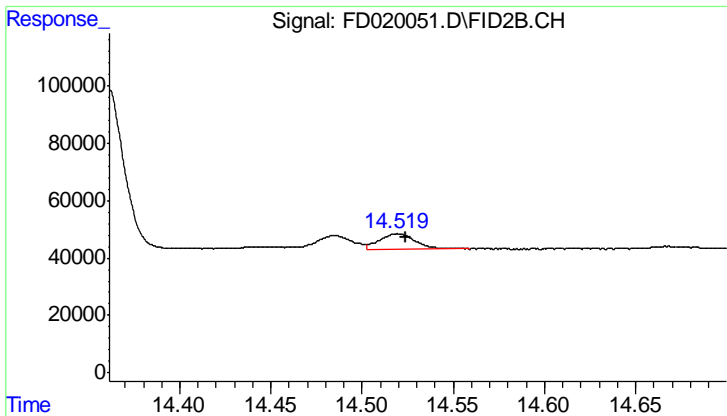
#11 ortho-Terphenyl (SURR)

R.T.: 0.000 min
 Exp R.T.: 11.263 min
 Response: 0
 Conc: N.D.

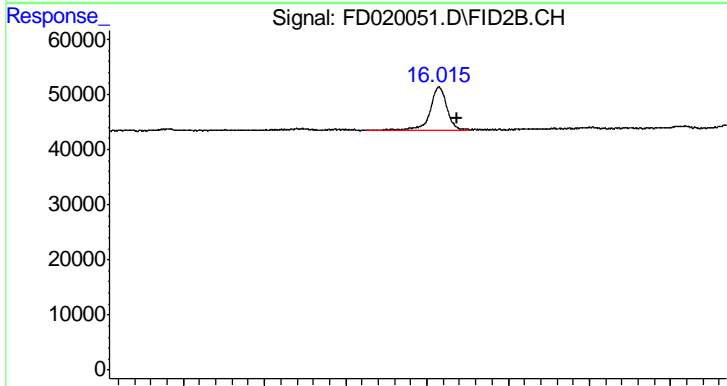


#14 Benzo[a]anthracene (C26.37)

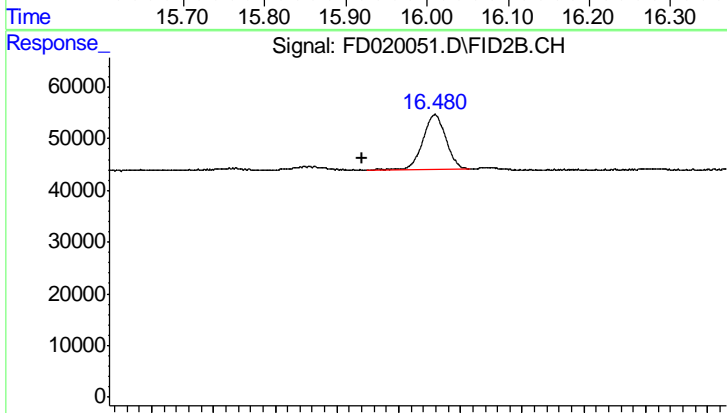
R.T.: 14.485 min
 Delta R.T.: 0.004 min
 Response: 64063
 Conc: 0.61 ug/ml



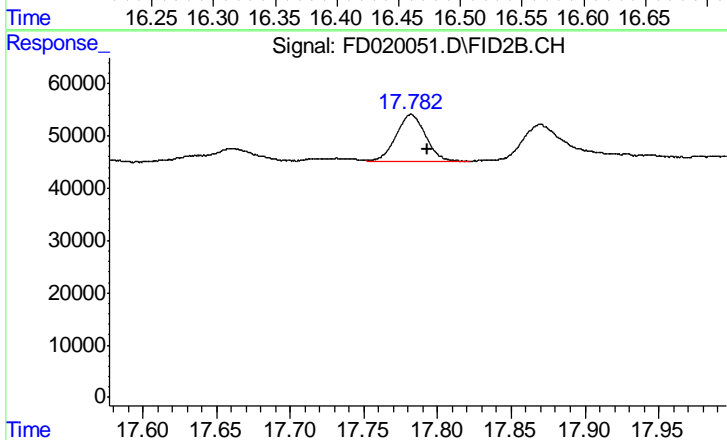
#15 Chrysene (C27.41)
 R.T.: 14.520 min
 Delta R.T.: -0.005 min
 Response: 71427
 Conc: 0.66 ug/ml



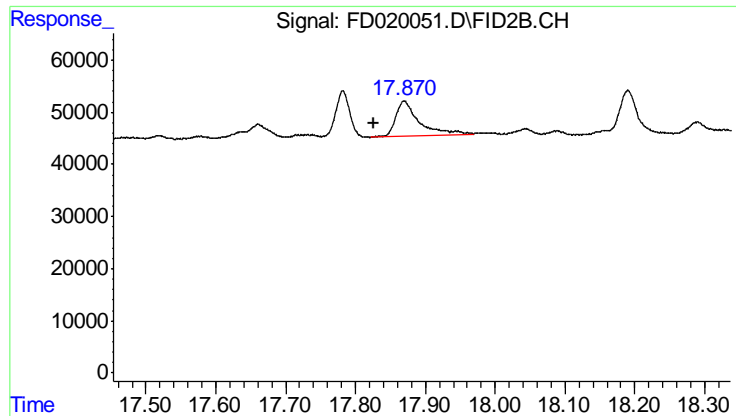
#16 benzo[b]fluoranthene (C30.41)
 R.T.: 16.015 min
 Delta R.T.: -0.022 min
 Response: 109363
 Conc: 1.02 ug/ml



#18 Benzo[a]pyrene (C31.34)
 R.T.: 16.479 min
 Delta R.T.: 0.058 min
 Response: 138940
 Conc: 1.27 ug/ml



#19 Indeno[1,2,3-cd]pyrene (C35.01)
 R.T.: 17.782 min
 Delta R.T.: -0.011 min
 Response: 126481
 Conc: 1.28 ug/ml



#20 Dibenz[a,h]anthracene (C30.36)

R.T.: 17.870 min
Delta R.T.: 0.044 min
Response: 156212
Conc: 1.36 ug/ml