

Data Path : P:\HPCHEM1\FID D\Data\FD021618AR\
 Data File : FD020059.D
 Signal(s) : FID2B.CH
 Acq On : 16 Feb 2018 23:20
 Operator : UA/AJ
 Sample : J1588-01
 Misc :
 ALS Vial : 59 Sample Multiplier: 1

Integration File: autoint1.e
 Quant Time: Feb 17 00:41:42 2018
 Quant Method : P:\HPCHEM1\FID_D\methods\Aromatic EPH 011818.M
 Quant Title : GC Extractables
 QLast Update : Fri Jan 19 04:27:29 2018
 Response via : Initial Calibration
 Integrator: ChemStation 6890 Scale Mode: Large solvent peaks clipped

Volume Inj. : 1 µl
 Signal Phase : Rxi-lms
 Signal Info : 20M x 0.18mm x 0.18µm

Compound	R.T.	Response	Conc Units

System Monitoring Compounds			
4) S 2-Bromonaphthalene (S...	7.349	5115939	63.228 ug/ml
Spiked Amount 50.000		Recovery =	126.46%
6) S 2-Fluorobiphenyl (SURR)	8.206	3516460	64.290 ug/ml
Spiked Amount 50.000 Range 0 - 131		Recovery =	128.58%
11) S ortho-Terphenyl (SURR)	11.231	3755195	37.957 ug/ml
Spiked Amount 50.000		Recovery =	75.91%
Target Compounds			
3) T 2-Methylnaphthalene (...)	6.764	134422	1.464 ug/ml
5) T Acenaphthylene (C15.06)	8.012	94078	0.992 ug/ml
7) T Acenaphthene (C15.5)	8.337	46084	0.472 ug/ml
8) T Fluorene (C16.55)	9.117	20738	0.218 ug/ml
13) T Pyrene (C20.8)	12.669f	1148969	10.847 ug/ml
19) T Indeno[1,2,3-cd]pyren...	17.780	45600	0.461 ug/ml
20) T Dibenz[a,h]anthracene...	17.780f	45600	0.398 ug/ml

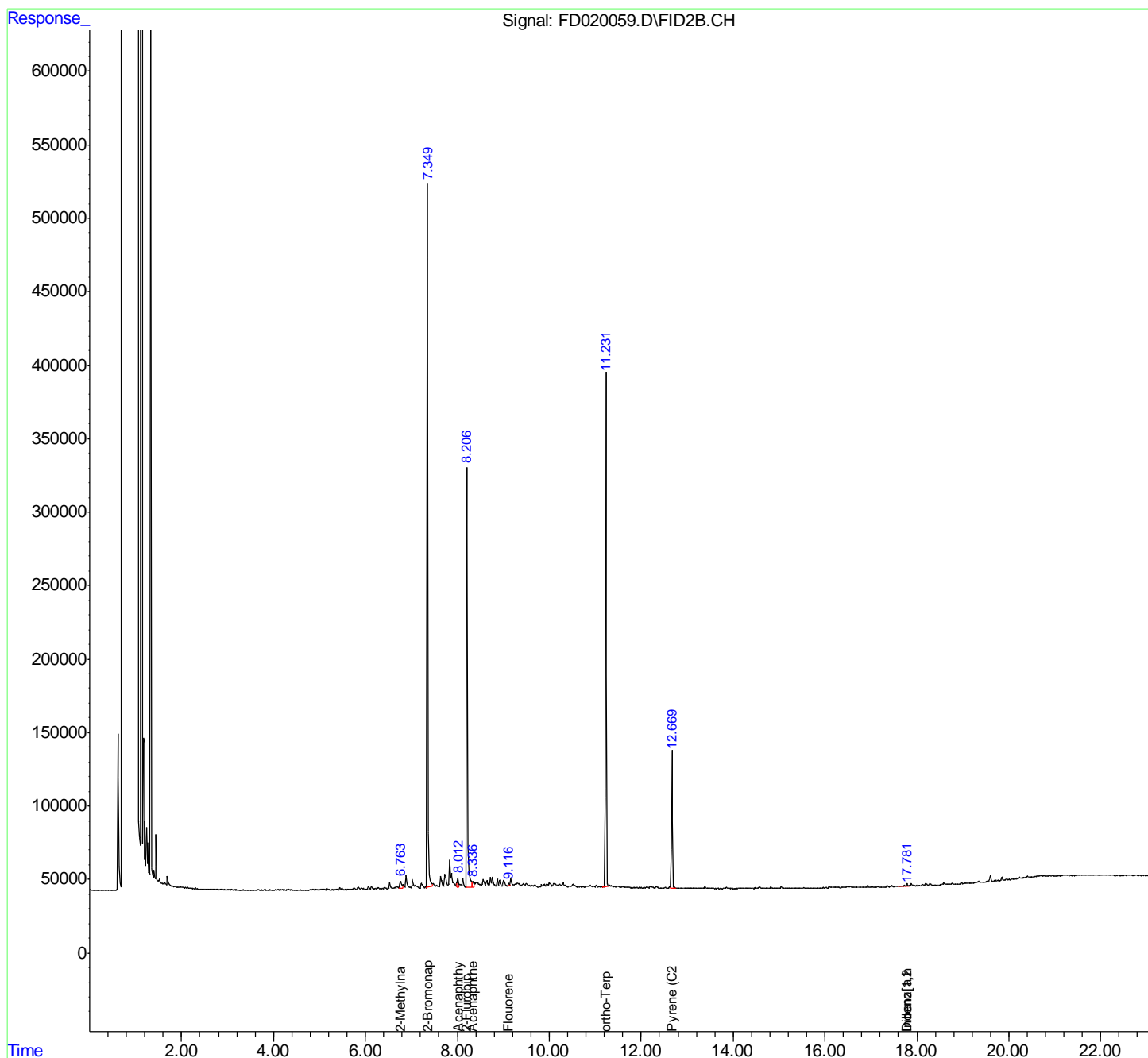
(f)=RT Delta > 1/2 Window

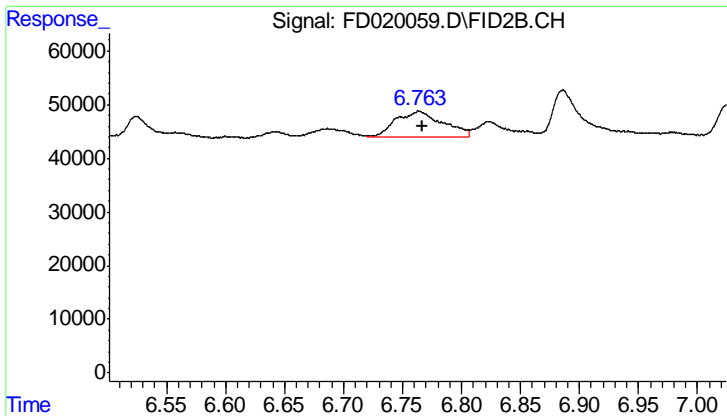
(m)=manual int.

Data Path : P:\HPCHEM1\FID D\Data\FD021618AR\
 Data File : FD020059.D
 Signal(s) : FID2B.CH
 Acq On : 16 Feb 2018 23:20
 Operator : UA/AJ
 Sample : J1588-01
 Misc :
 ALS Vial : 59 Sample Multiplier: 1

Integration File: autoint1.e
 Quant Time: Feb 17 00:41:42 2018
 Quant Method : P:\HPCHEM1\FID_D\methods\Aromatic EPH 011818.M
 Quant Title : GC Extractables
 QLast Update : Fri Jan 19 04:27:29 2018
 Response via : Initial Calibration
 Integrator: ChemStation 6890 Scale Mode: Large solvent peaks clipped

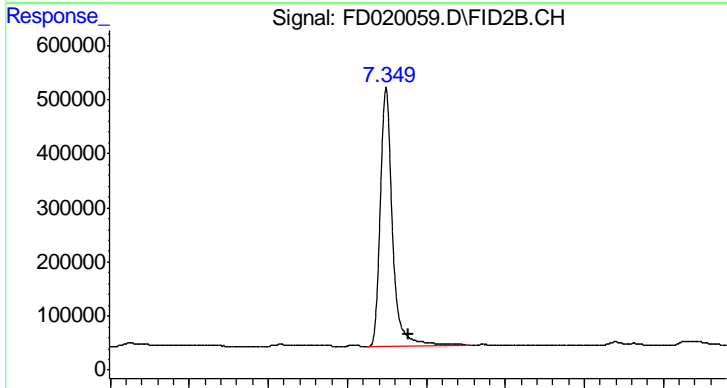
Volume Inj. : 1 µl
 Signal Phase : Rxi-lms
 Signal Info : 20M x 0.18mm x 0.18µm





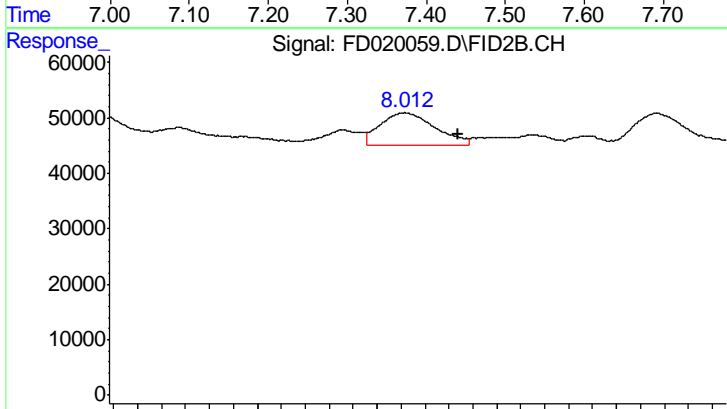
#3 2-Methylnaphthalene (C12.89)

R.T.: 6.764 min
Delta R.T.: -0.002 min
Response: 134422
Conc: 1.46 ug/ml



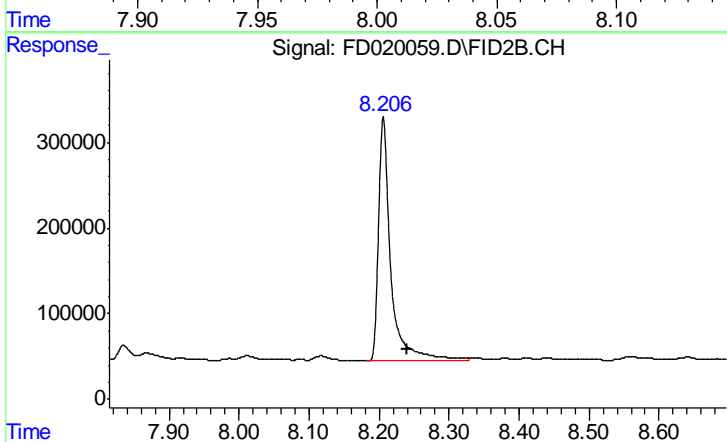
#4 2-Bromonaphthalene (SURR)

R.T.: 7.349 min
Delta R.T.: -0.028 min
Response: 5115939
Conc: 63.23 ug/ml



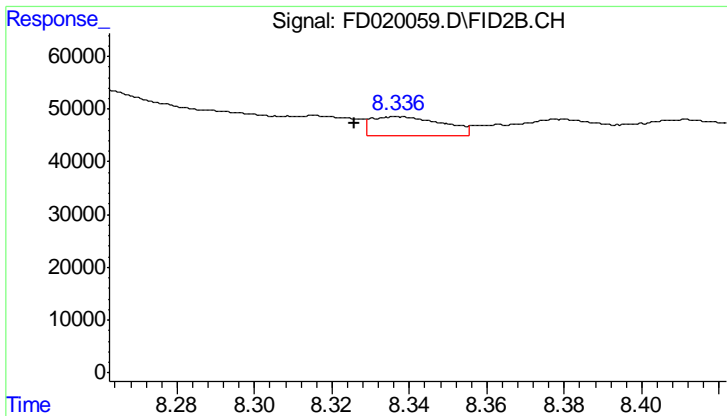
#5 Acenaphthylene (C15.06)

R.T.: 8.012 min
Delta R.T.: -0.022 min
Response: 94078
Conc: 0.99 ug/ml



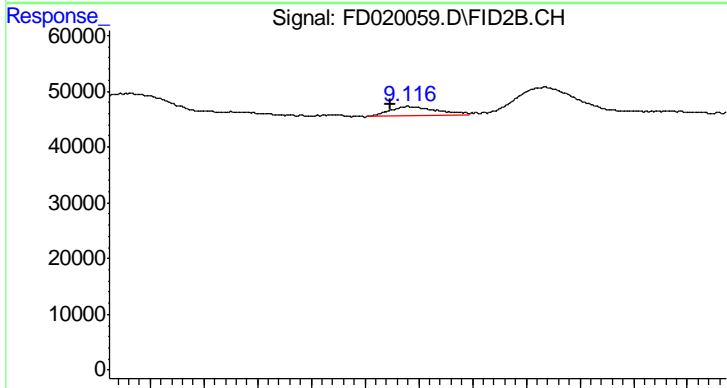
#6 2-Fluorobiphenyl (SURR)

R.T.: 8.206 min
Delta R.T.: -0.033 min
Response: 3516460
Conc: 64.29 ug/ml



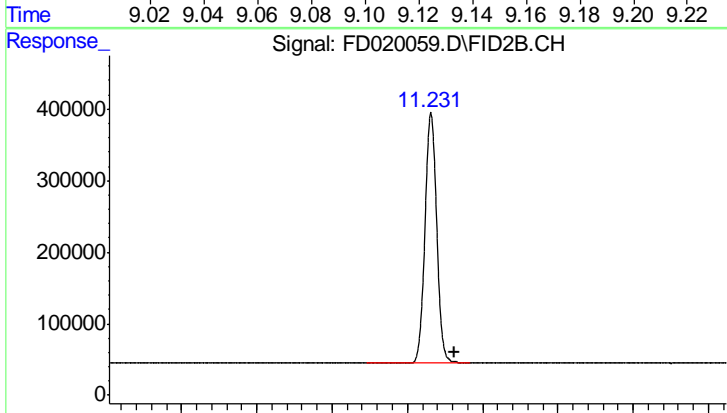
#7 Acenaphthene (C15.5)

R.T.: 8.337 min
Delta R.T.: 0.011 min
Response: 46084
Conc: 0.47 ug/ml



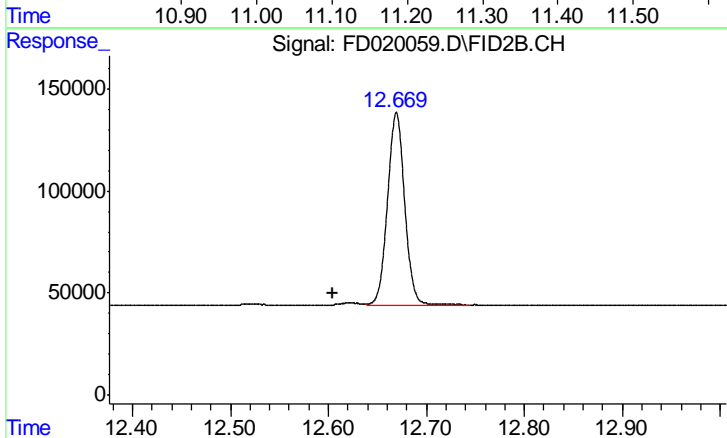
#8 Flouorene (C16.55)

R.T.: 9.117 min
Delta R.T.: 0.007 min
Response: 20738
Conc: 0.22 ug/ml



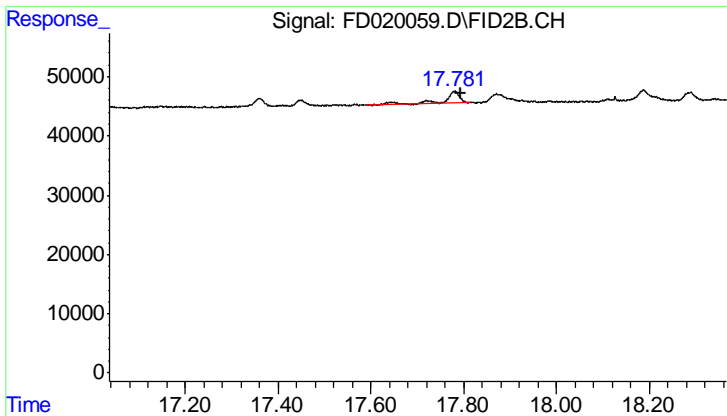
#11 ortho-Terphenyl (SURR)

R.T.: 11.231 min
Delta R.T.: -0.032 min
Response: 3755195
Conc: 37.96 ug/ml



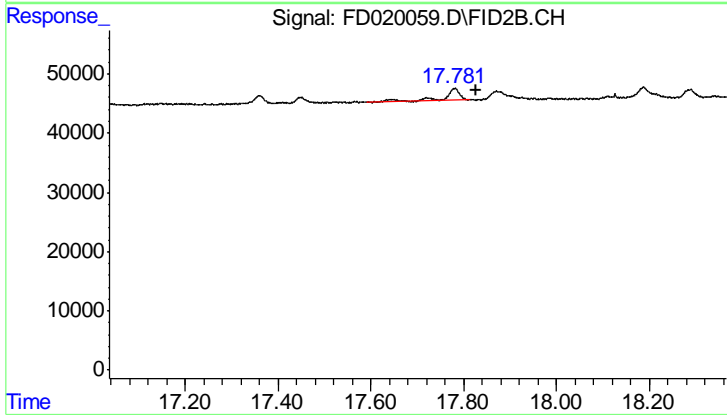
#13 Pyrene (C20.8)

R.T.: 12.669 min
Delta R.T.: 0.066 min
Response: 1148969
Conc: 10.85 ug/ml



#19 Indeno[1,2,3-cd]pyrene (C35.01)

R.T.: 17.780 min
Delta R.T.: -0.013 min
Response: 45600
Conc: 0.46 ug/ml



#20 Dibenz[a,h]anthracene (C30.36)

R.T.: 17.780 min
Delta R.T.: -0.046 min
Response: 45600
Conc: 0.40 ug/ml