

Data Path : P:\HPCHEM1\FID D\Data\FD030118AR\
 Data File : FD020242.D
 Signal(s) : FID2B.CH
 Acq On : 02 Mar 2018 16:26
 Operator : UA/AJ
 Sample : J1720-13
 Misc :
 ALS Vial : 72 Sample Multiplier: 1

Integration File: autoint1.e
 Quant Time: Mar 03 01:46:48 2018
 Quant Method : P:\HPCHEM1\FID_D\methods\Aromatic EPH 022018.M
 Quant Title : GC Extractables
 QLast Update : Wed Feb 21 04:46:02 2018
 Response via : Initial Calibration
 Integrator: ChemStation 6890 Scale Mode: Large solvent peaks clipped

Volume Inj. : 1 µl
 Signal Phase : Rxi-lms
 Signal Info : 20M x 0.18mm x 0.18µm

Compound	R.T.	Response	Conc Units

System Monitoring Compounds			
4) S 2-Bromonaphthalene (S...	7.339	4778562	57.039 ug/ml
Spiked Amount 50.000		Recovery =	114.08%
6) S 2-Fluorobiphenyl (SURR)	8.196	3120744	61.727 ug/ml
Spiked Amount 50.000 Range 0 - 131		Recovery =	123.45%
11) S ortho-Terphenyl (SURR)	11.227	3890097	40.991 ug/ml
Spiked Amount 50.000		Recovery =	81.98%

Target Compounds

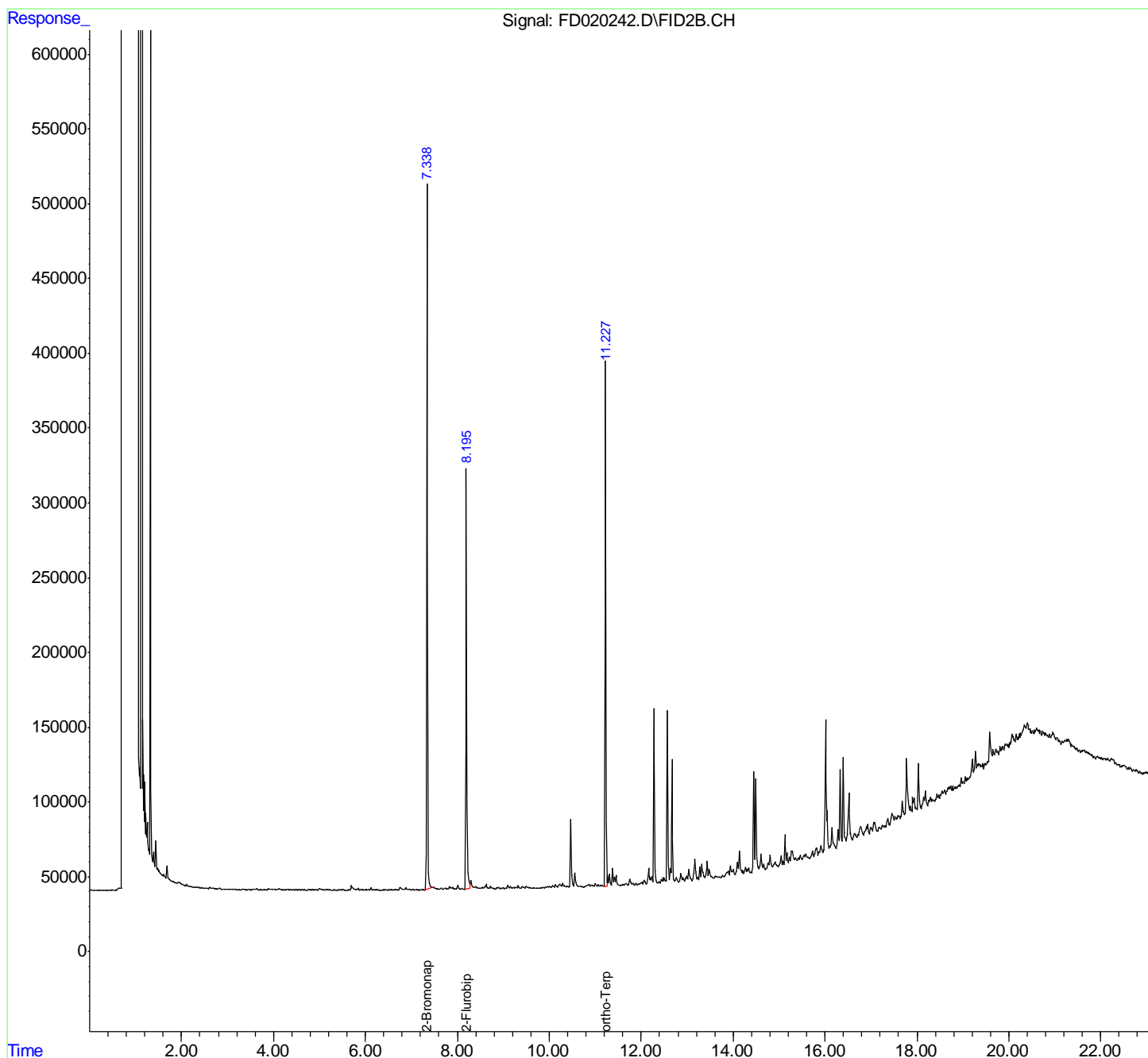
(f)=RT Delta > 1/2 Window

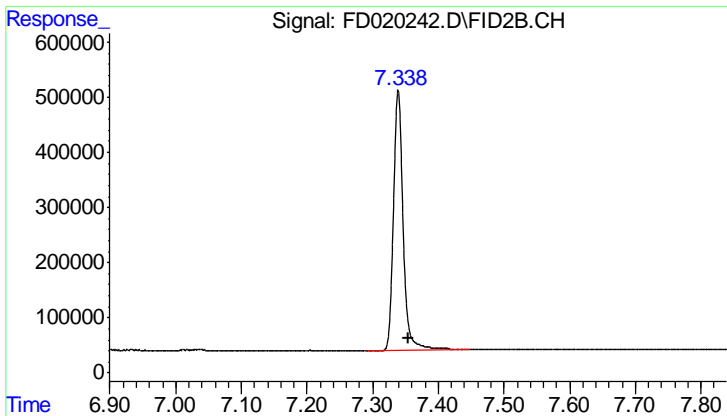
(m)=manual int.

Data Path : P:\HPCHEM1\FID D\Data\FD030118AR\
Data File : FD020242.D
Signal(s) : FID2B.CH
Acq On : 02 Mar 2018 16:26
Operator : UA/AJ
Sample : J1720-13
Misc :
ALS Vial : 72 Sample Multiplier: 1

Integration File: autoint1.e
Quant Time: Mar 03 01:46:48 2018
Quant Method : P:\HPCHEM1\FID_D\methods\Aromatic EPH 022018.M
Quant Title : GC Extractables
QLast Update : Wed Feb 21 04:46:02 2018
Response via : Initial Calibration
Integrator: ChemStation 6890 Scale Mode: Large solvent peaks clipped

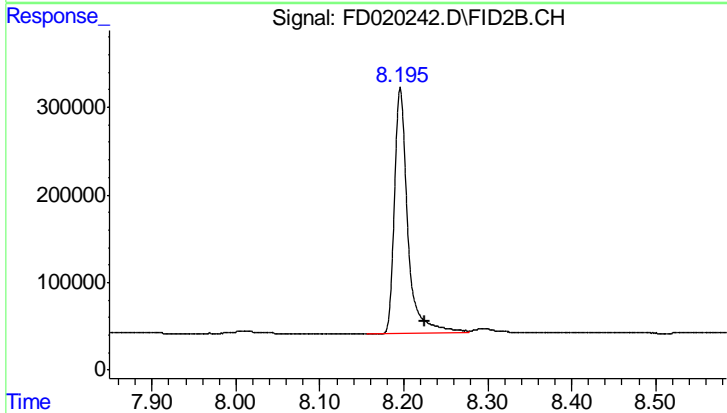
Volume Inj. : 1 µl
Signal Phase : Rxi-lms
Signal Info : 20M x 0.18mm x 0.18µm





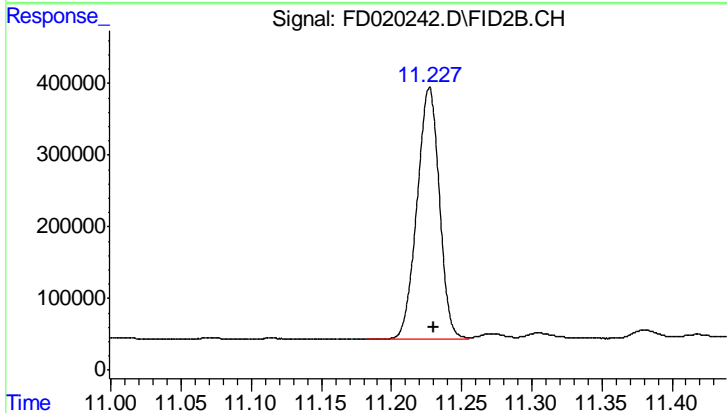
#4 2-Bromonaphthalene (SURR)

R.T.: 7.339 min
Delta R.T.: -0.016 min
Response: 4778562
Conc: 57.04 ug/ml



#6 2-Fluorobiphenyl (SURR)

R.T.: 8.196 min
Delta R.T.: -0.029 min
Response: 3120744
Conc: 61.73 ug/ml



#11 ortho-Terphenyl (SURR)

R.T.: 11.227 min
Delta R.T.: -0.003 min
Response: 3890097
Conc: 40.99 ug/ml