

Data Path : P:\HPCHEM1\FID D\Data\FD031418AR\
Data File : FD022532.D
Signal(s) : FID2B.CH
Acq On : 15 Mar 2018 15:39
Operator : UA/AJ
Sample : I.BLK
Misc :
ALS Vial : 51 Sample Multiplier: 1

Integration File: autoint1.e
Quant Time: Mar 16 02:58:39 2018
Quant Method : P:\HPCHEM1\FID_D\methods\Aromatic EPH 022018.M
Quant Title : GC Extractables
QLast Update : Wed Feb 21 04:46:02 2018
Response via : Initial Calibration
Integrator: ChemStation 6890 Scale Mode: Large solvent peaks clipped

Volume Inj. : 1 µl
Signal Phase : Rxi-lms
Signal Info : 20M x 0.18mm x 0.18µm

Compound	R.T.	Response	Conc Units

System Monitoring Compounds			
Target Compounds			

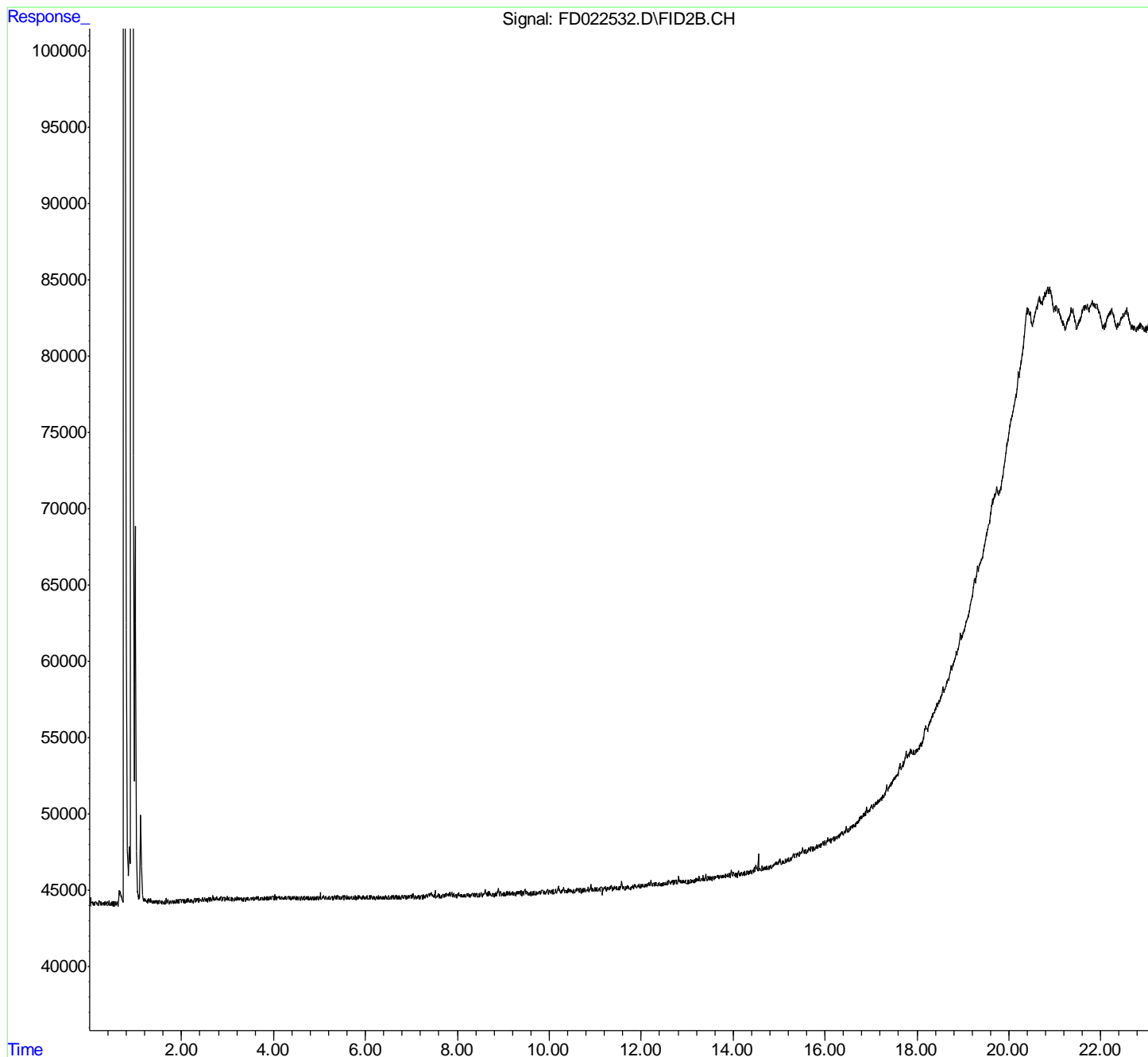
(f)=RT Delta > 1/2 Window

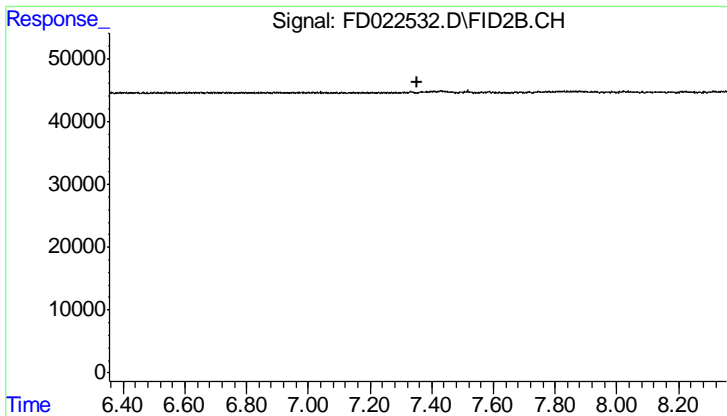
(m)=manual int.

Data Path : P:\HPCHEM1\FID D\Data\FD031418AR\
Data File : FD022532.D
Signal(s) : FID2B.CH
Acq On : 15 Mar 2018 15:39
Operator : UA/AJ
Sample : I.BLK
Misc :
ALS Vial : 51 Sample Multiplier: 1

Integration File: autoint1.e
Quant Time: Mar 16 02:58:39 2018
Quant Method : P:\HPCHEM1\FID_D\methods\Aromatic EPH 022018.M
Quant Title : GC Extractables
QLast Update : Wed Feb 21 04:46:02 2018
Response via : Initial Calibration
Integrator: ChemStation 6890 Scale Mode: Large solvent peaks clipped

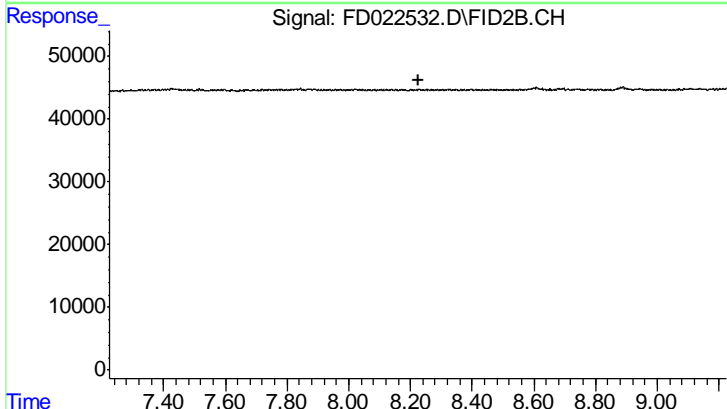
Volume Inj. : 1 µl
Signal Phase : Rxi-lms
Signal Info : 20M x 0.18mm x 0.18µm





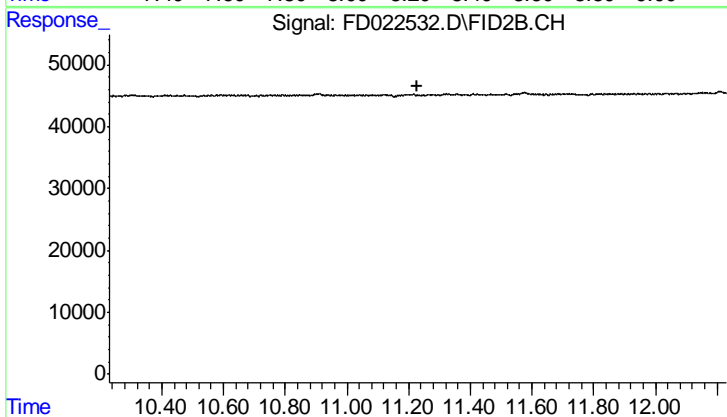
#4 2-Bromonaphthalene (SURR)

R.T.: 0.000 min
Exp R.T.: 7.355 min
Response: 0
Conc: N.D.



#6 2-Fluorobiphenyl (SURR)

R.T.: 0.000 min
Exp R.T.: 8.225 min
Response: 0
Conc: N.D.



#11 ortho-Terphenyl (SURR)

R.T.: 0.000 min
Exp R.T.: 11.230 min
Response: 0
Conc: N.D.