

Data Path : P:\HPCHEM1\FID D\Data\FD040618AL\
 Data File : FD022851.D
 Signal(s) : FID2B.CH
 Acq On : 06 Apr 2018 12:33
 Operator : UA/AJ
 Sample : J2170-02
 Misc :
 ALS Vial : 53 Sample Multiplier: 1

Integration File: autoint1.e
 Quant Time: Apr 06 14:33:32 2018
 Quant Method : P:\HPCHEM1\FID_D\methods\Alaphatic EPH 031618.M
 Quant Title : GC Extractables
 QLast Update : Mon Mar 19 11:51:27 2018
 Response via : Initial Calibration
 Integrator: ChemStation 6890 Scale Mode: Large solvent peaks clipped

Volume Inj. : 1 ul
 Signal Phase : Rxi-lms
 Signal Info : 20M x 0.18mm x 0.18um

Compound	R.T.	Response	Conc Units

System Monitoring Compounds			
9) S ortho-Terphenyl (SURR)	11.188	3362653	32.755 ug/ml
Spiked Amount	50.000	Recovery	= 65.51%
12) S 1-chlorooctadecane (S...	12.630	2652013	33.551 ug/ml
Spiked Amount	50.000	Recovery	= 67.10%

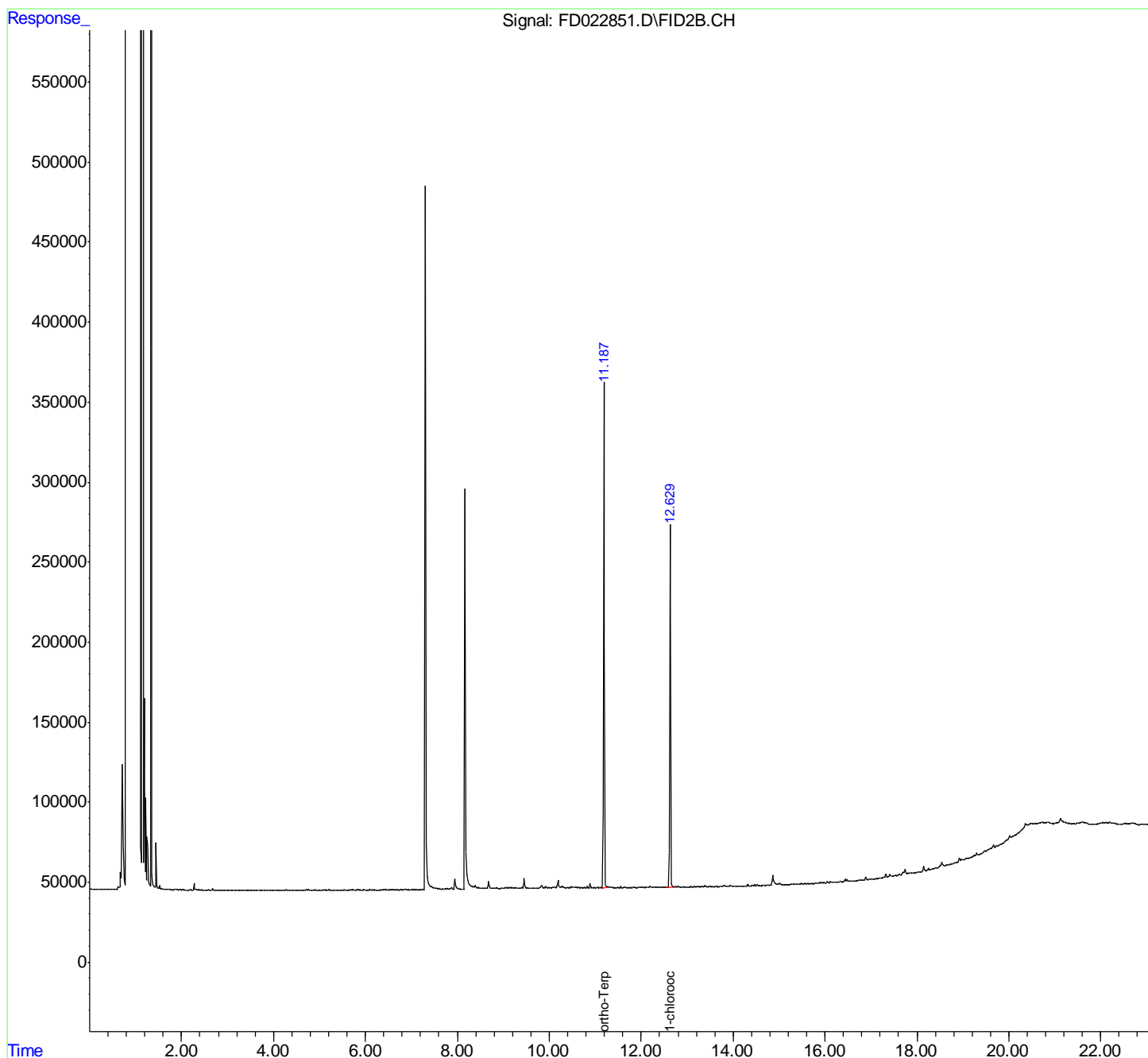
Target Compounds

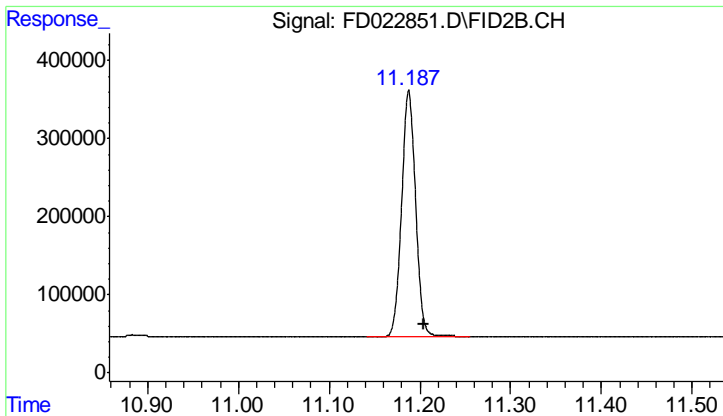
(f)=RT Delta > 1/2 Window (m)=manual int.

Data Path : P:\HPCHEM1\FID D\Data\FD040618AL\
 Data File : FD022851.D
 Signal(s) : FID2B.CH
 Acq On : 06 Apr 2018 12:33
 Operator : UA/AJ
 Sample : J2170-02
 Misc :
 ALS Vial : 53 Sample Multiplier: 1

Integration File: autoint1.e
 Quant Time: Apr 06 14:33:32 2018
 Quant Method : P:\HPCHEM1\FID_D\methods\Alaphatic EPH 031618.M
 Quant Title : GC Extractables
 QLast Update : Mon Mar 19 11:51:27 2018
 Response via : Initial Calibration
 Integrator: ChemStation 6890 Scale Mode: Large solvent peaks clipped

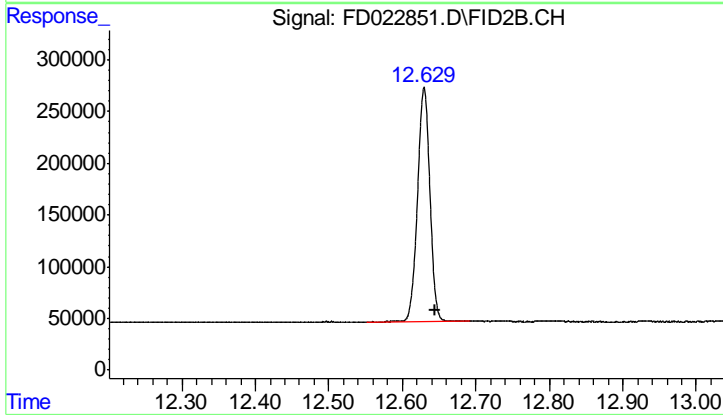
Volume Inj. : 1 ul
 Signal Phase : Rxi-lms
 Signal Info : 20M x 0.18mm x 0.18um





#9 ortho-Terphenyl (SURR)

R.T.: 11.188 min
Delta R.T.: -0.017 min
Response: 3362653
Conc: 32.76 ug/ml



#12 1-chlorooctadecane (SURR)

R.T.: 12.630 min
Delta R.T.: -0.016 min
Response: 2652013
Conc: 33.55 ug/ml