

Data Path : P:\HPCHEM1\FID_D\Data\FD041918AL\
 Data File : FD023122.D
 Signal(s) : FID2B.CH
 Acq On : 19 Apr 2018 14:55
 Operator : UA/AJ
 Sample : J2407-03DL 5X
 Misc :
 ALS Vial : 55 Sample Multiplier: 1

Integration File: autoint1.e
 Quant Time: Apr 20 01:11:45 2018
 Quant Method : P:\HPCHEM1\FID_D\methods\Alaphatic EPH 041718.M
 Quant Title : GC Extractables
 QLast Update : Wed Apr 18 01:21:26 2018
 Response via : Initial Calibration
 Integrator: ChemStation 6890 Scale Mode: Large solvent peaks clipped

Volume Inj. : 1 ul
 Signal Phase : Rxi-lms
 Signal Info : 20M x 0.18mm x 0.18um

Compound	R.T.	Response	Conc Units

System Monitoring Compounds			
12) S 1-chlorooctadecane (S...	12.608	340712	3.190 ug/mlm
Spiked Amount 50.000		Recovery =	6.38%

Target Compounds

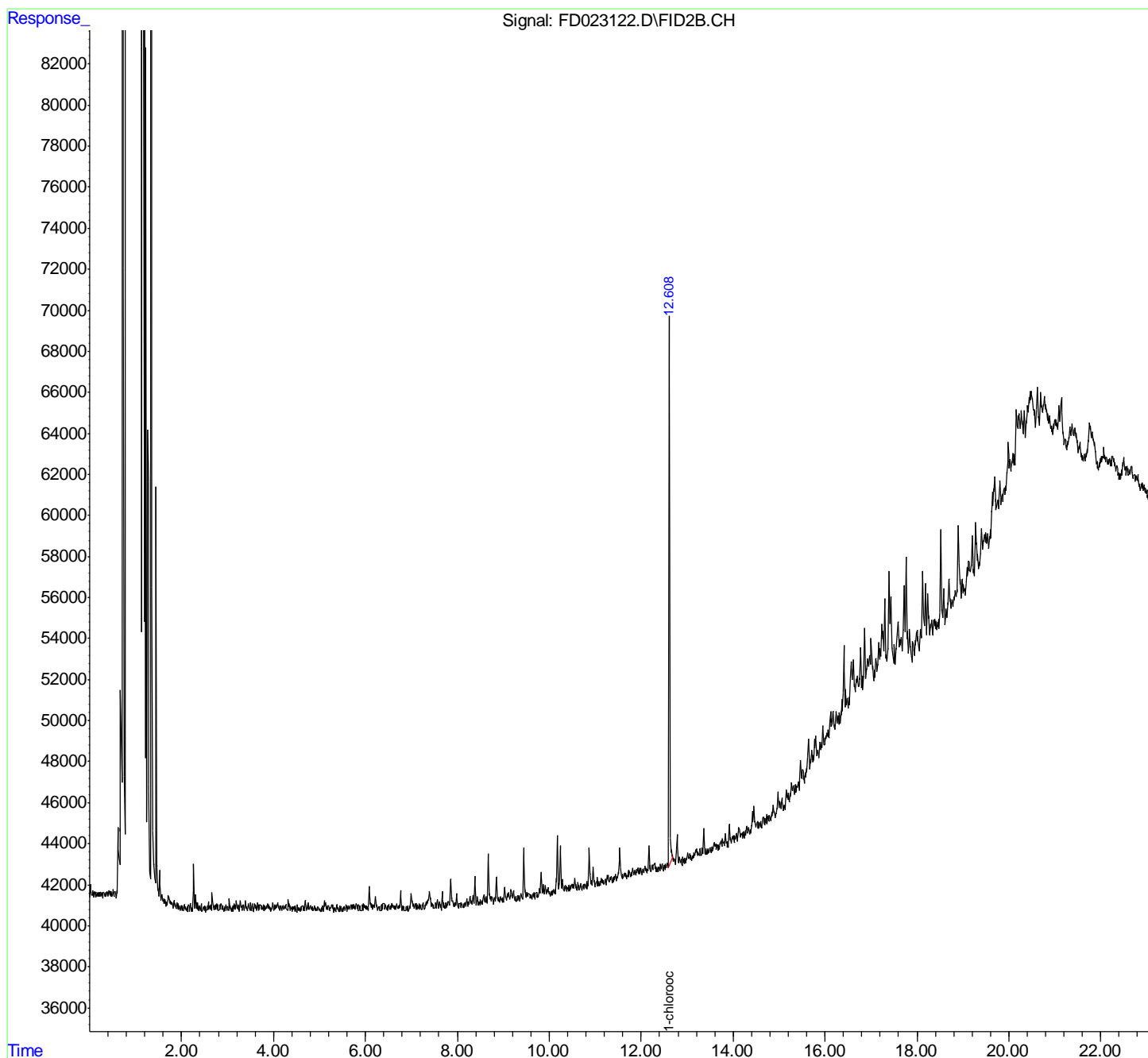
(f)=RT Delta > 1/2 Window

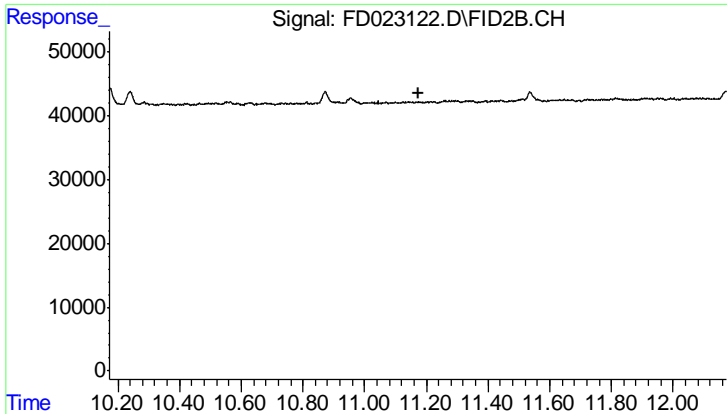
(m)=manual int.

Data Path : P:\HPCHEM1\FID_D\Data\FD041918AL\
 Data File : FD023122.D
 Signal(s) : FID2B.CH
 Acq On : 19 Apr 2018 14:55
 Operator : UA/AJ
 Sample : J2407-03DL 5X
 Misc :
 ALS Vial : 55 Sample Multiplier: 1

Integration File: autoint1.e
 Quant Time: Apr 20 01:11:45 2018
 Quant Method : P:\HPCHEM1\FID_D\methods\Alaphatic EPH 041718.M
 Quant Title : GC Extractables
 QLast Update : Wed Apr 18 01:21:26 2018
 Response via : Initial Calibration
 Integrator: ChemStation 6890 Scale Mode: Large solvent peaks clipped

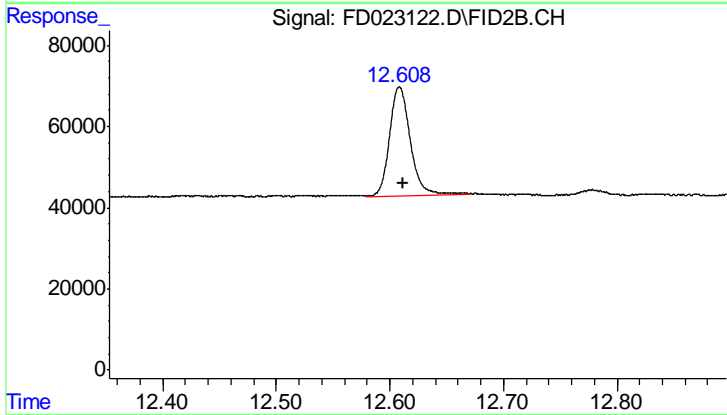
Volume Inj. : 1 ul
 Signal Phase : Rxi-lms
 Signal Info : 20M x 0.18mm x 0.18um





#9 ortho-Terphenyl (SURR)

R.T.: 0.000 min
Exp R.T.: 11.173 min
Response: 0
Conc: N.D.



#12 1-chlorooctadecane (SURR)

R.T.: 12.608 min
Delta R.T.: -0.004 min
Response: 340712
Conc: 3.19 ug/ml m