

Data Path : P:\HPCHEM1\FID_D\Data\FD042018AR\
 Data File : FD023150.D
 Signal(s) : FID2B.CH
 Acq On : 20 Apr 2018 7:59
 Operator : UA/AJ
 Sample : J2407-01MS
 Misc :
 ALS Vial : 79 Sample Multiplier: 1

Integration File: autoint1.e
 Quant Time: Apr 20 08:32:37 2018
 Quant Method : P:\HPCHEM1\FID_D\methods\Aromatic EPH 041618.M
 Quant Title : GC Extractables
 QLast Update : Tue Apr 17 11:02:32 2018
 Response via : Initial Calibration
 Integrator: ChemStation 6890 Scale Mode: Large solvent peaks clipped

Volume Inj. : 1 µl
 Signal Phase : Rxi-lms
 Signal Info : 20M x 0.18mm x 0.18µm

Compound	R.T.	Response	Conc Units

System Monitoring Compounds			
4) S 2-Bromonaphthalene (S...	7.288	5008798	36.933 ug/ml
Spiked Amount 50.000		Recovery =	73.87%
6) S 2-Fluorobiphenyl (SURR)	8.148	3125551	43.857 ug/ml
Spiked Amount 50.000 Range 0 - 131		Recovery =	87.71%
11) S ortho-Terphenyl (SURR)	11.168	3290878	23.539 ug/ml
Spiked Amount 50.000		Recovery =	47.08%
Target Compounds			
1) T 1,2,3-Trimethylbenzen...	4.101	2366603	16.978 ug/ml
2) T Naphthalene (C11.7)	5.630	2887692	21.098 ug/ml
3) T 2-Methylnaphthalene (...)	6.679	2993470	21.929 ug/ml
5) T Acenaphthylene (C15.06)	7.944	3093098	21.163 ug/ml
7) T Acenaphthene (C15.5)	8.236	3751915	22.209 ug/ml
8) T Flouorene (C16.55)	9.019	3557378	24.842 ug/ml
9) T Phenanthrene (C19.36)	10.412	7451331	56.140 ug/ml
10) T Anthracene (C19.43)	10.489	4184394	29.906 ug/ml
12) T Fluoranthene (C21.85)	12.222	8946677	65.135 ug/ml
13) T Pyrene (C20.8)	12.516	8086467	57.287 ug/ml
14) T Benzo[a]anthracene (C...	14.395	6275732	50.516 ug/mlm
15) T Chrysene (C27.41)	14.421	11543198	74.559 ug/ml
16) T benzo[b]fluoranthene ...	15.957	6313251	46.834 ug/mlm
17) T Bnezo[k]fluoranthene ...	15.985	4346742	26.342 ug/ml
18) T Benzo[a]pyrene (C31.34)	16.335	5412140	37.543 ug/mlm
19) T Indeno[1,2,3-cd]pyren...	17.717	4125621	31.792 ug/mlm
20) T Dibenz[a,h]anthracene...	17.742	3761908	22.615 ug/ml
21) T Benzo[g,h,i]perylene ...	17.966	4362665	29.435 ug/ml

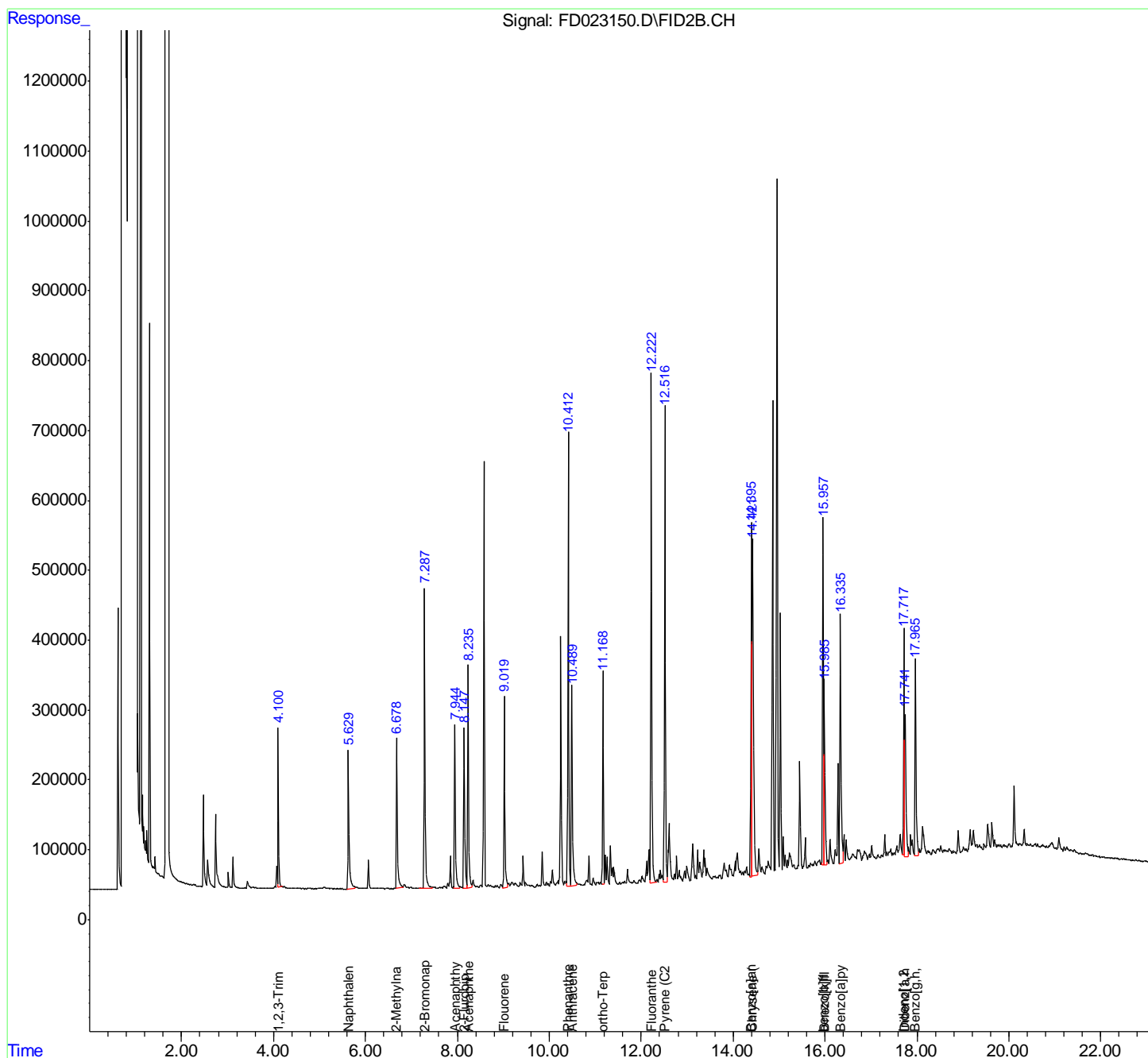
(f)=RT Delta > 1/2 Window

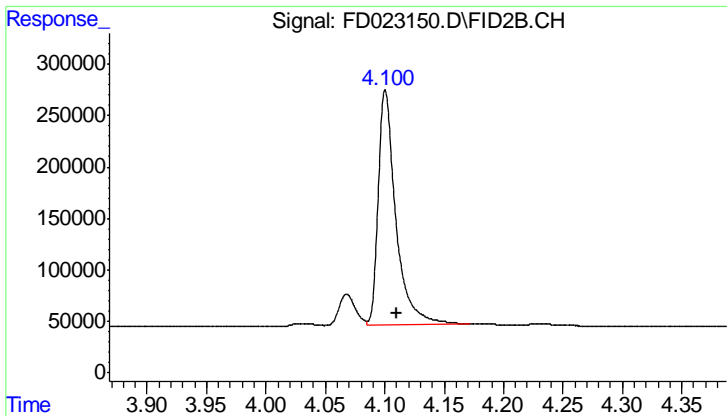
(m)=manual int.

Data Path : P:\HPCHEM1\FID_D\Data\FD042018AR\
 Data File : FD023150.D
 Signal(s) : FID2B.CH
 Acq On : 20 Apr 2018 7:59
 Operator : UA/AJ
 Sample : J2407-01MS
 Misc :
 ALS Vial : 79 Sample Multiplier: 1

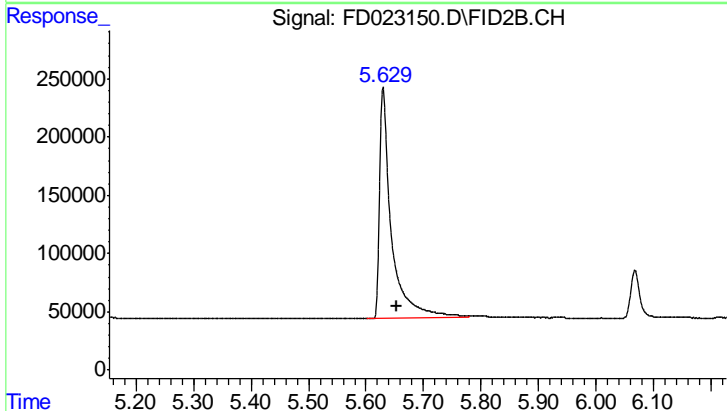
Integration File: autoint1.e
 Quant Time: Apr 20 08:32:37 2018
 Quant Method : P:\HPCHEM1\FID_D\methods\Aromatic EPH 041618.M
 Quant Title : GC Extractables
 QLast Update : Tue Apr 17 11:02:32 2018
 Response via : Initial Calibration
 Integrator: ChemStation 6890 Scale Mode: Large solvent peaks clipped

Volume Inj. : 1 µl
 Signal Phase : Rxi-lms
 Signal Info : 20M x 0.18mm x 0.18µm

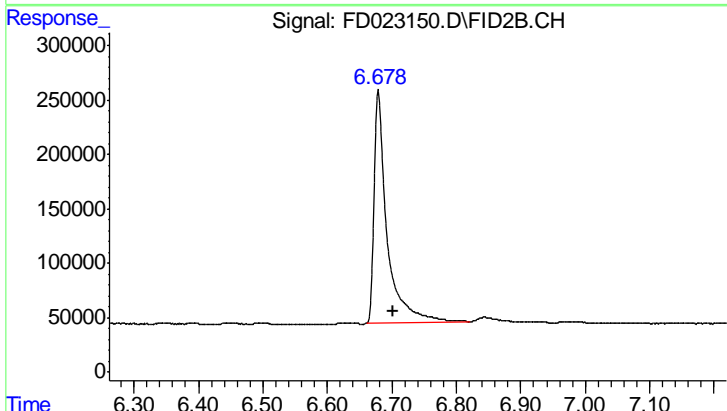




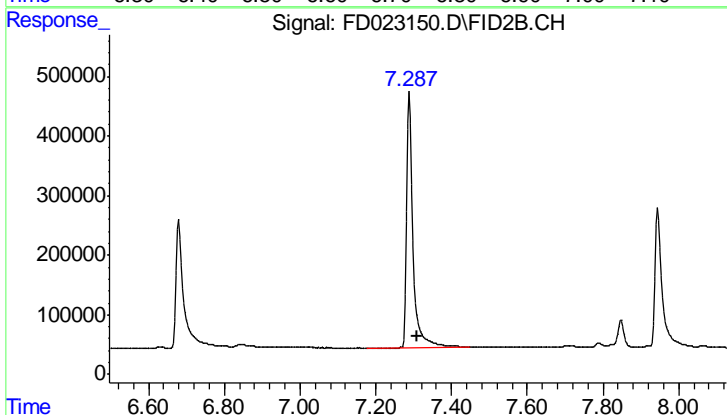
#1 1,2,3-Trimethylbenzene (C10.1)
 R.T.: 4.101 min
 Delta R.T.: -0.010 min
 Response: 2366603
 Conc: 16.98 ug/ml



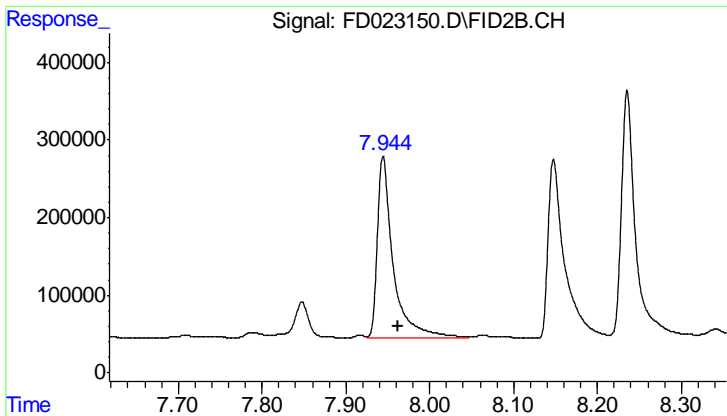
#2 Naphthalene (C11.7)
 R.T.: 5.630 min
 Delta R.T.: -0.023 min
 Response: 2887692
 Conc: 21.10 ug/ml



#3 2-Methylnaphthalene (C12.89)
 R.T.: 6.679 min
 Delta R.T.: -0.023 min
 Response: 2993470
 Conc: 21.93 ug/ml

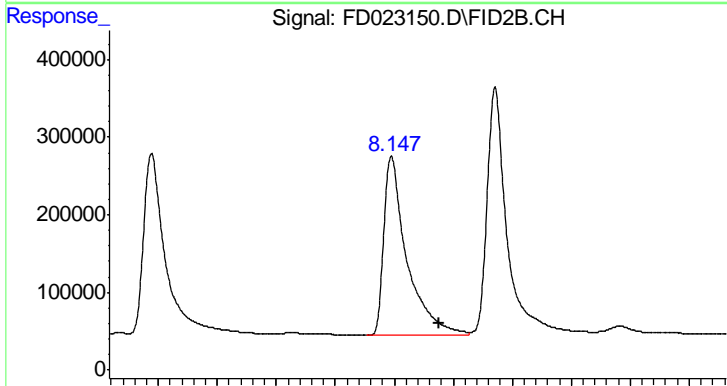


#4 2-Bromonaphthalene (SURR)
 R.T.: 7.288 min
 Delta R.T.: -0.021 min
 Response: 5008798
 Conc: 36.93 ug/ml



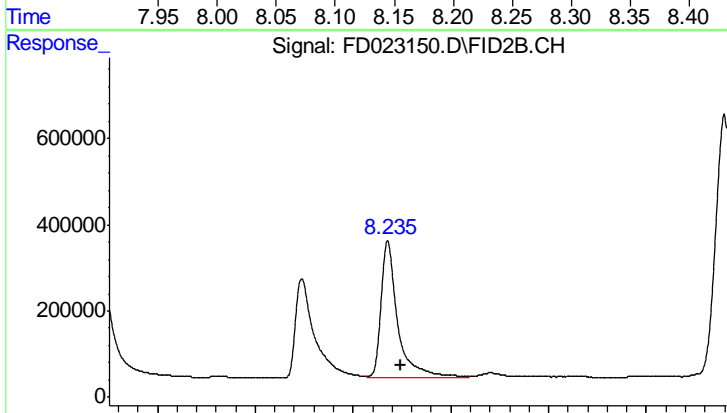
#5 Acenaphthylene (C15.06)

R.T.: 7.944 min
Delta R.T.: -0.018 min
Response: 3093098
Conc: 21.16 ug/ml



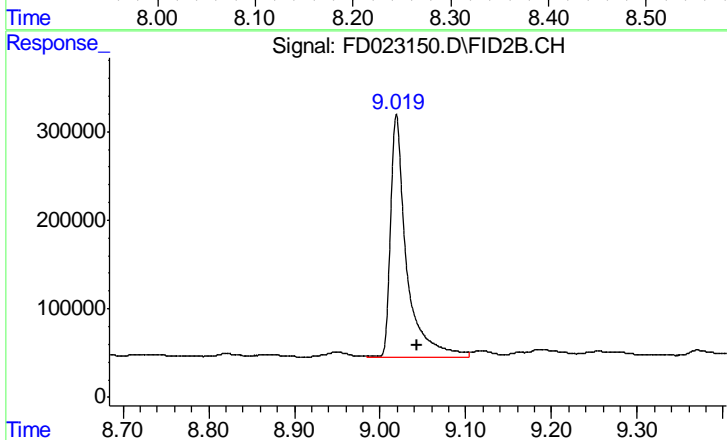
#6 2-Fluorobiphenyl (SURR)

R.T.: 8.148 min
Delta R.T.: -0.040 min
Response: 3125551
Conc: 43.86 ug/ml



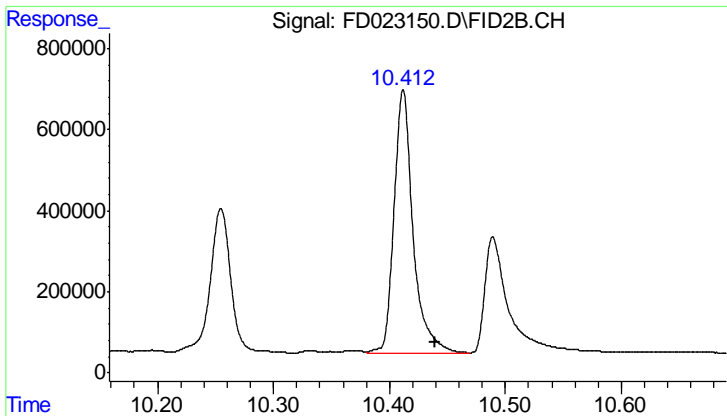
#7 Acenaphthene (C15.5)

R.T.: 8.236 min
Delta R.T.: -0.013 min
Response: 3751915
Conc: 22.21 ug/ml



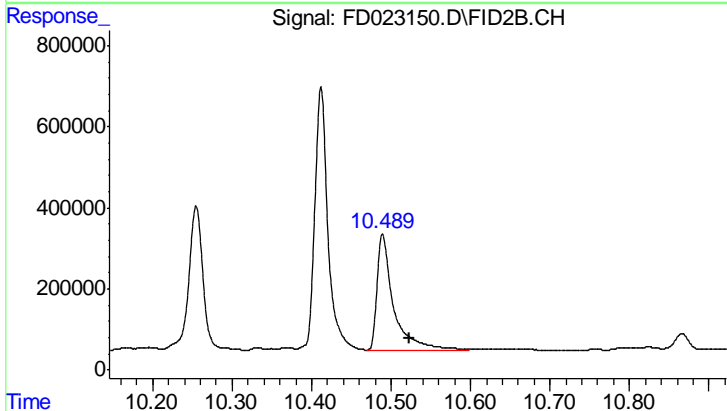
#8 Fluorene (C16.55)

R.T.: 9.019 min
Delta R.T.: -0.025 min
Response: 3557378
Conc: 24.84 ug/ml



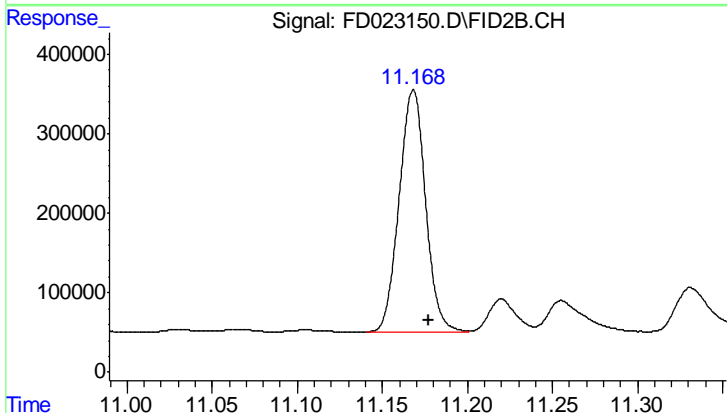
#9 Phenanthrene (C19.36)

R.T.: 10.412 min
Delta R.T.: -0.027 min
Response: 7451331
Conc: 56.14 ug/ml



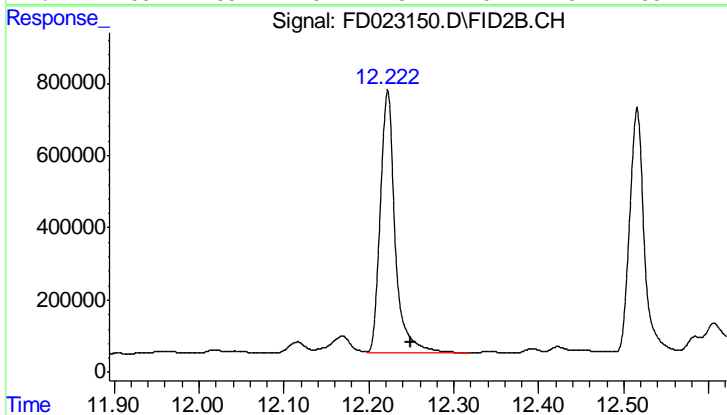
#10 Anthracene (C19.43)

R.T.: 10.489 min
Delta R.T.: -0.033 min
Response: 4184394
Conc: 29.91 ug/ml



#11 ortho-Terphenyl (SURR)

R.T.: 11.168 min
Delta R.T.: -0.009 min
Response: 3290878
Conc: 23.54 ug/ml



#12 Fluoranthene (C21.85)

R.T.: 12.222 min
Delta R.T.: -0.027 min
Response: 8946677
Conc: 65.13 ug/ml