

Data Path : P:\HPCHEM1\FID D\Data\FD042318AL\
 Data File : FD023239.D
 Signal(s) : FID2B.CH
 Acq On : 23 Apr 2018 21:53
 Operator : UA/AJ
 Sample : J2480-02
 Misc :
 ALS Vial : 77 Sample Multiplier: 1

Integration File: autoint1.e
 Quant Time: Apr 24 03:16:18 2018
 Quant Method : P:\HPCHEM1\FID_D\methods\Alaphatic EPH 041718.M
 Quant Title : GC Extractables
 QLast Update : Wed Apr 18 01:21:26 2018
 Response via : Initial Calibration
 Integrator: ChemStation 6890 Scale Mode: Large solvent peaks clipped

Volume Inj. : 1 ul
 Signal Phase : Rxi-lms
 Signal Info : 20M x 0.18mm x 0.18um

Compound	R.T.	Response	Conc Units

System Monitoring Compounds			
9) S ortho-Terphenyl (SURR)	11.163	5598212	43.131 ug/ml
Spiked Amount	50.000	Recovery	= 86.26%
12) S 1-chlorooctadecane (S...	12.604	4583612	42.920 ug/ml
Spiked Amount	50.000	Recovery	= 85.84%
Target Compounds			
21) T n-Octatriacontane (C38)	20.396	2087534	17.110 ug/ml

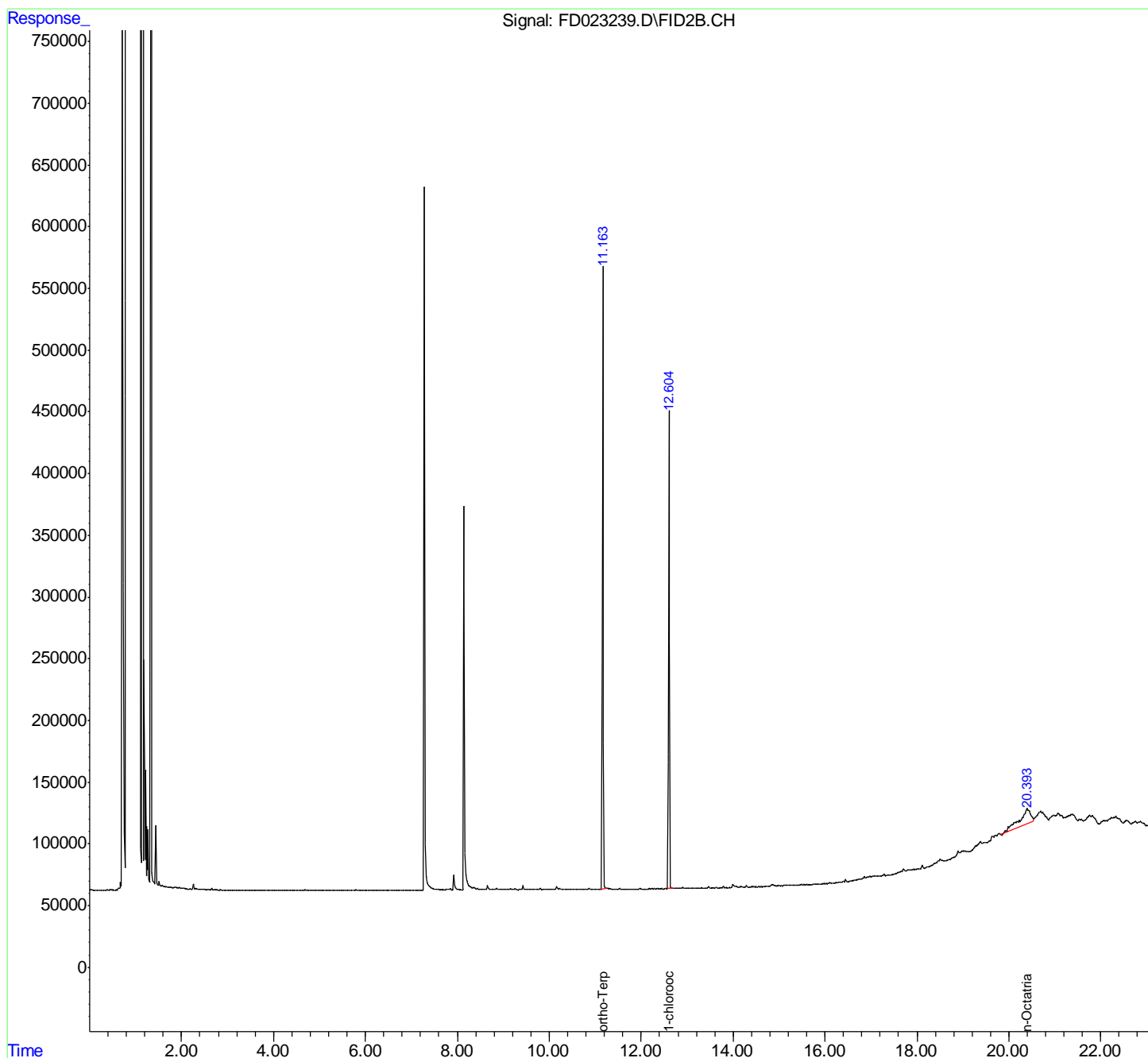
(f)=RT Delta > 1/2 Window

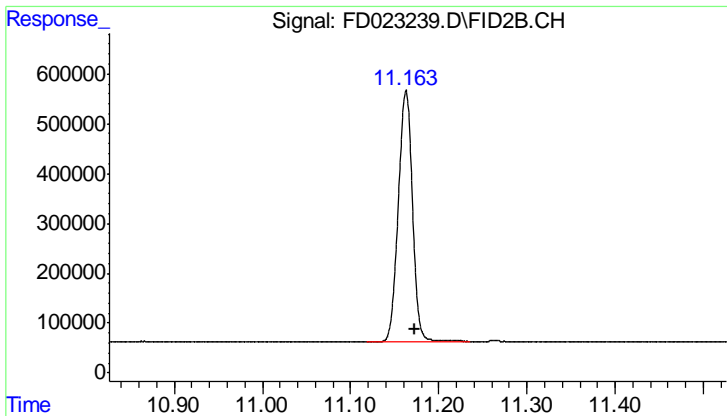
(m)=manual int.

Data Path : P:\HPCHEM1\FID D\Data\FD042318AL\
 Data File : FD023239.D
 Signal(s) : FID2B.CH
 Acq On : 23 Apr 2018 21:53
 Operator : UA/AJ
 Sample : J2480-02
 Misc :
 ALS Vial : 77 Sample Multiplier: 1

Integration File: autoint1.e
 Quant Time: Apr 24 03:16:18 2018
 Quant Method : P:\HPCHEM1\FID_D\methods\Alaphatic EPH 041718.M
 Quant Title : GC Extractables
 QLast Update : Wed Apr 18 01:21:26 2018
 Response via : Initial Calibration
 Integrator: ChemStation 6890 Scale Mode: Large solvent peaks clipped

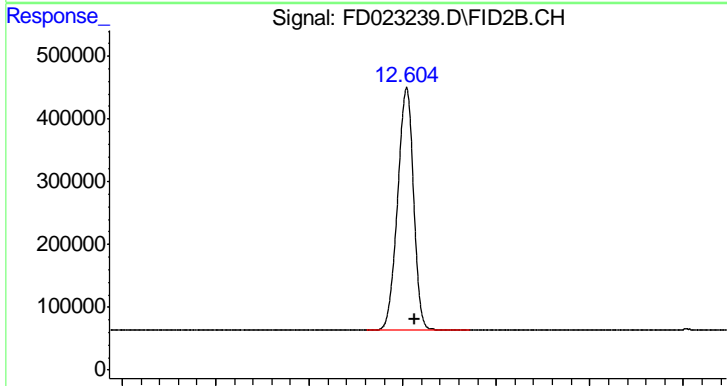
Volume Inj. : 1 ul
 Signal Phase : Rxi-lms
 Signal Info : 20M x 0.18mm x 0.18um





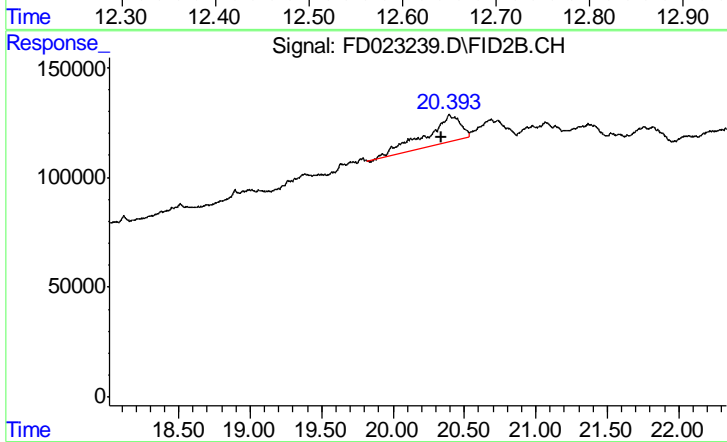
#9 ortho-Terphenyl (SURR)

R.T.: 11.163 min
Delta R.T.: -0.010 min
Response: 5598212
Conc: 43.13 ug/ml



#12 1-chlorooctadecane (SURR)

R.T.: 12.604 min
Delta R.T.: -0.008 min
Response: 4583612
Conc: 42.92 ug/ml



#21 n-Octatriacontane (C38)

R.T.: 20.396 min
Delta R.T.: 0.057 min
Response: 2087534
Conc: 17.11 ug/ml