

Data Path : P:\HPCHEM1\FID_D\Data\FD042318AL\
Data File : FD023251.D
Signal(s) : FID2B.CH
Acq On : 24 Apr 2018 5:31
Operator : UA/AJ
Sample : I.BLK
Misc :
ALS Vial : 51 Sample Multiplier: 1

Integration File: autoint1.e
Quant Time: Apr 24 07:13:29 2018
Quant Method : P:\HPCHEM1\FID_D\methods\Alaphatic EPH 041718.M
Quant Title : GC Extractables
QLast Update : Wed Apr 18 01:21:26 2018
Response via : Initial Calibration
Integrator: ChemStation 6890 Scale Mode: Large solvent peaks clipped

Volume Inj. : 1 ul
Signal Phase : Rxi-lms
Signal Info : 20M x 0.18mm x 0.18um

Compound	R.T.	Response	Conc Units

System Monitoring Compounds			
Target Compounds			

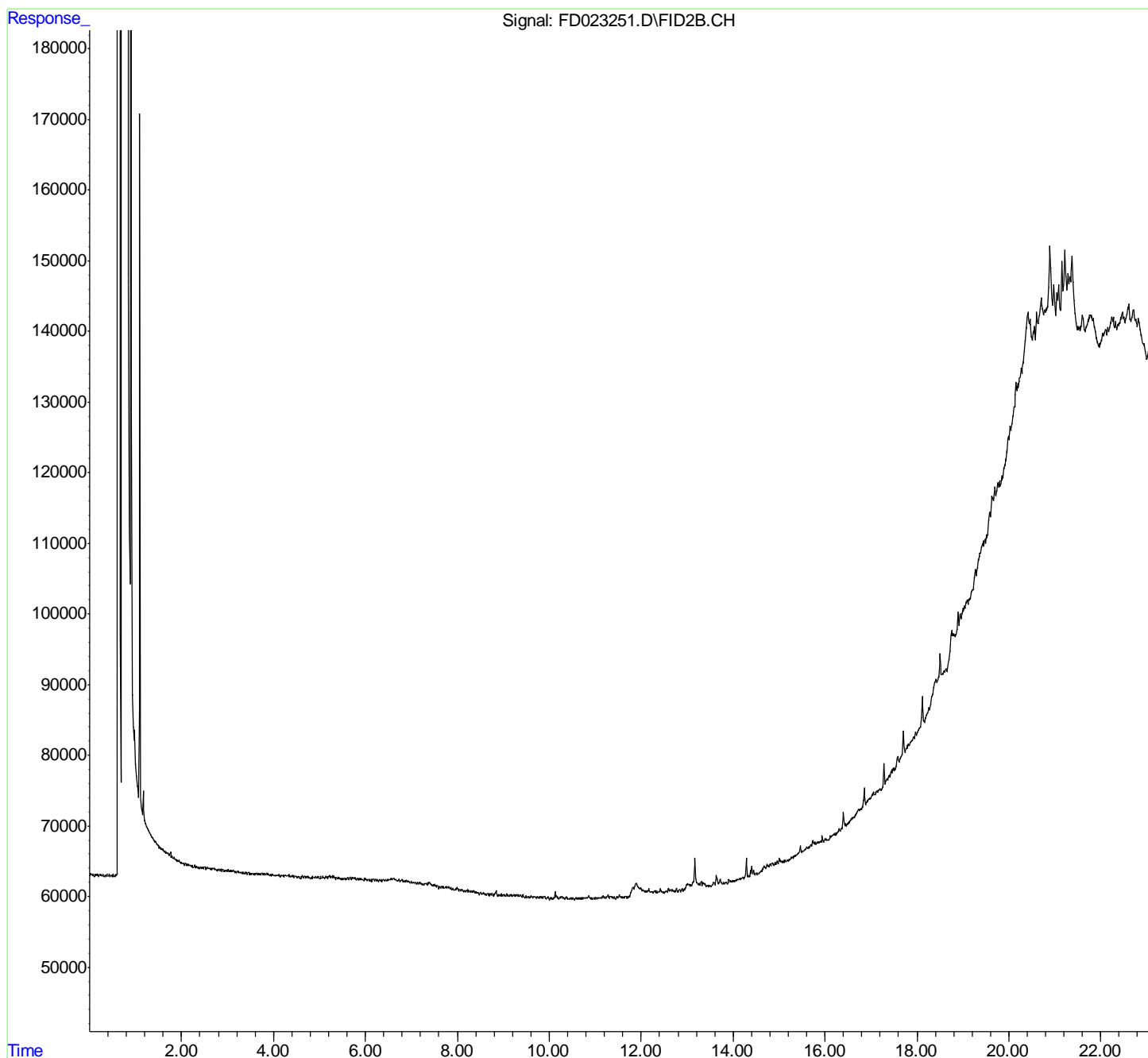
(f)=RT Delta > 1/2 Window

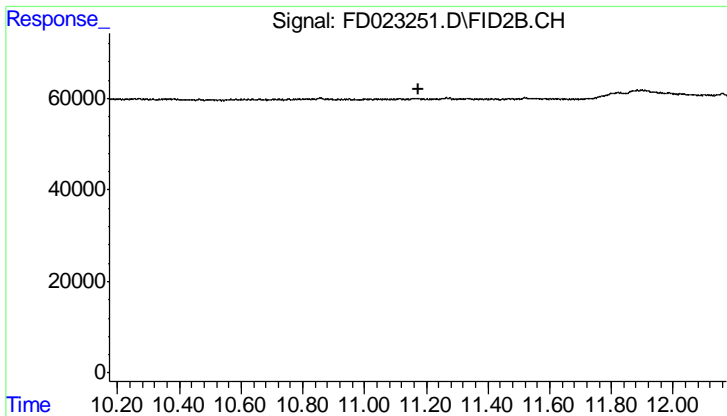
(m)=manual int.

Data Path : P:\HPCHEM1\FID_D\Data\FD042318AL\
Data File : FD023251.D
Signal(s) : FID2B.CH
Acq On : 24 Apr 2018 5:31
Operator : UA/AJ
Sample : I.BLK
Misc :
ALS Vial : 51 Sample Multiplier: 1

Integration File: autoint1.e
Quant Time: Apr 24 07:13:29 2018
Quant Method : P:\HPCHEM1\FID_D\methods\Alaphatic EPH 041718.M
Quant Title : GC Extractables
QLast Update : Wed Apr 18 01:21:26 2018
Response via : Initial Calibration
Integrator: ChemStation 6890 Scale Mode: Large solvent peaks clipped

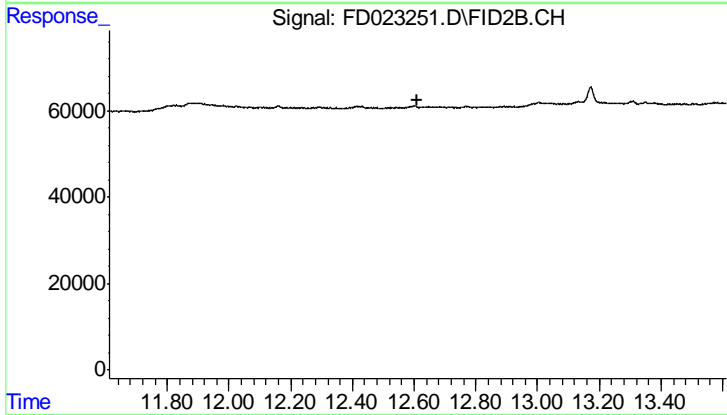
Volume Inj. : 1 ul
Signal Phase : Rxi-lms
Signal Info : 20M x 0.18mm x 0.18um





#9 ortho-Terphenyl (SURR)

R.T.: 0.000 min
Exp R.T.: 11.173 min
Response: 0
Conc: N.D.



#12 1-chlorooctadecane (SURR)

R.T.: 0.000 min
Exp R.T.: 12.612 min
Response: 0
Conc: N.D.