

Data Path : P:\HPCHEM1\FID_D\Data\FD042918AR\
Data File : FD023364.D
Signal(s) : FID2B.CH
Acq On : 30 Apr 2018 11:15
Operator : UA/AJ
Sample : I.BLK
Misc :
ALS Vial : 54 Sample Multiplier: 1

Integration File: autoint1.e
Quant Time: Apr 30 20:59:16 2018
Quant Method : P:\HPCHEM1\FID_D\methods\Aromatic EPH 041618.M
Quant Title : GC Extractables
QLast Update : Tue Apr 24 21:25:16 2018
Response via : Initial Calibration
Integrator: ChemStation 6890 Scale Mode: Large solvent peaks clipped

Volume Inj. : 1 µl
Signal Phase : Rxi-1ms
Signal Info : 20M x 0.18mm x 0.18µm

Compound	R.T.	Response	Conc Units

System Monitoring Compounds			
Target Compounds			

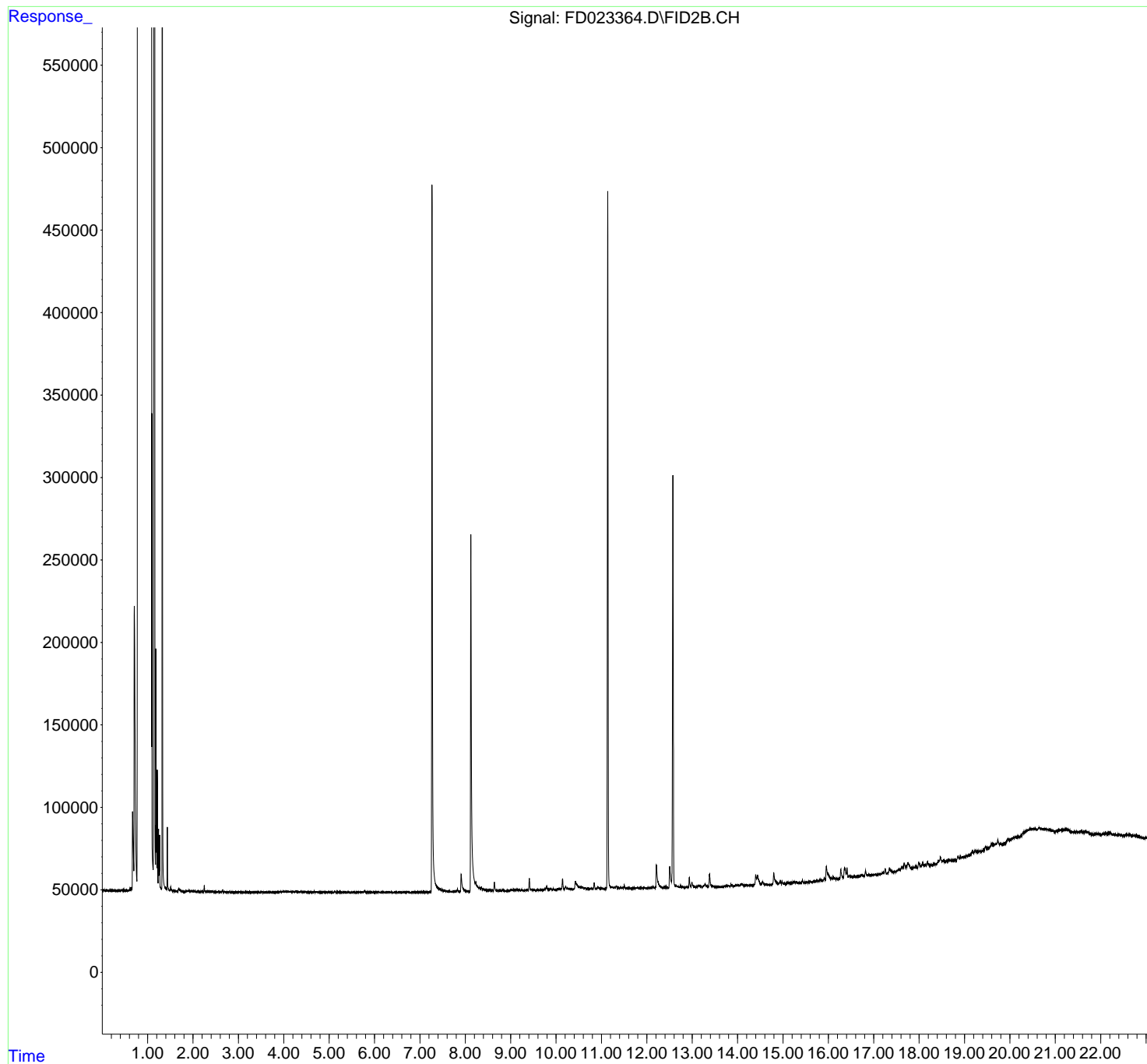
(f)=RT Delta > 1/2 Window

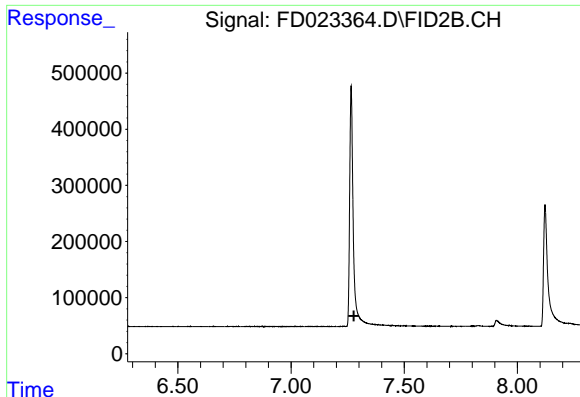
(m)=manual int.

Data Path : P:\HPCHEM1\FID_D\Data\FD042918AR\
Data File : FD023364.D
Signal(s) : FID2B.CH
Acq On : 30 Apr 2018 11:15
Operator : UA/AJ
Sample : I.BLK
Misc :
ALS Vial : 54 Sample Multiplier: 1

Integration File: autoint1.e
Quant Time: Apr 30 20:59:16 2018
Quant Method : P:\HPCHEM1\FID_D\methods\Aromatic EPH 041618.M
Quant Title : GC Extractables
QLast Update : Tue Apr 24 21:25:16 2018
Response via : Initial Calibration
Integrator: ChemStation 6890 Scale Mode: Large solvent peaks clipped

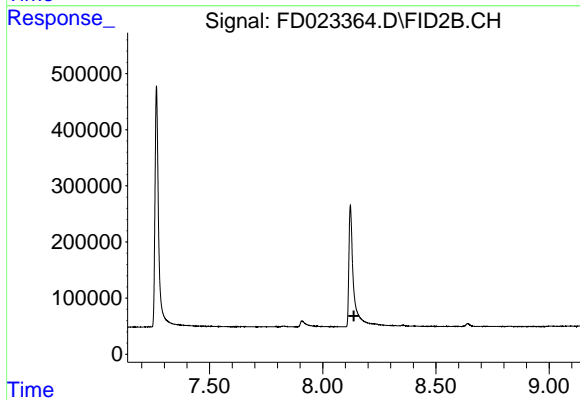
Volume Inj. : 1 μ l
Signal Phase : Rxi-1ms
Signal Info : 20M x 0.18mm x 0.18 μ m





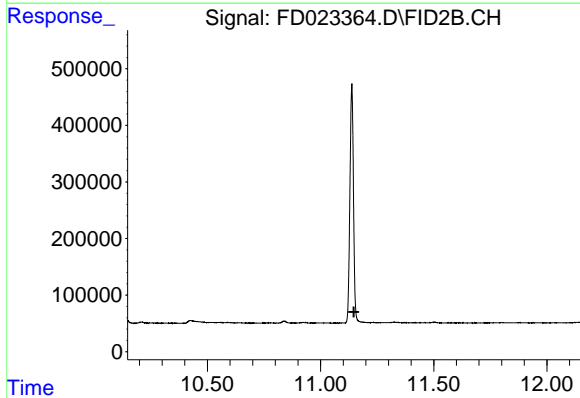
#4 2-Bromonaphthalene (SURR)

R.T.: 0.000 min
Exp R.T. : 7.278 min
Response: 0
Conc: N.D.



#6 2-Fluorobiphenyl (SURR)

R.T.: 0.000 min
Exp R.T. : 8.137 min
Response: 0
Conc: N.D.



#11 ortho-Terphenyl (SURR)

R.T.: 0.000 min
Exp R.T. : 11.147 min
Response: 0
Conc: N.D.