

Data Path : Z:\pestpcbsrv\HPCHEM1\FID_D\Data\FD081919AL\
 Data File : FD030184.D
 Signal(s) : FID2B.CH
 Acq On : 19 Aug 2019 13:39
 Operator : DD\AJ
 Sample : I.BLK
 Misc :
 ALS Vial : 51 Sample Multiplier: 1

Integration File: autoint1.e
 Quant Time: Aug 20 02:10:07 2019
 Quant Method : Z:\pestpcbsrv\HPCHEM1\FID_D\methods\Alaphatic EPH 080819.M
 Quant Title : GC Extractables
 QLast Update : Thu Aug 08 17:24:17 2019
 Response via : Initial Calibration
 Integrator: ChemStation 6890 Scale Mode: Large solvent peaks clipped

Volume Inj. : 1 ul
 Signal Phase : Rxi-1ms
 Signal Info : 20M x 0.18mm x 0.18um

Compound	R.T.	Response	Conc Units

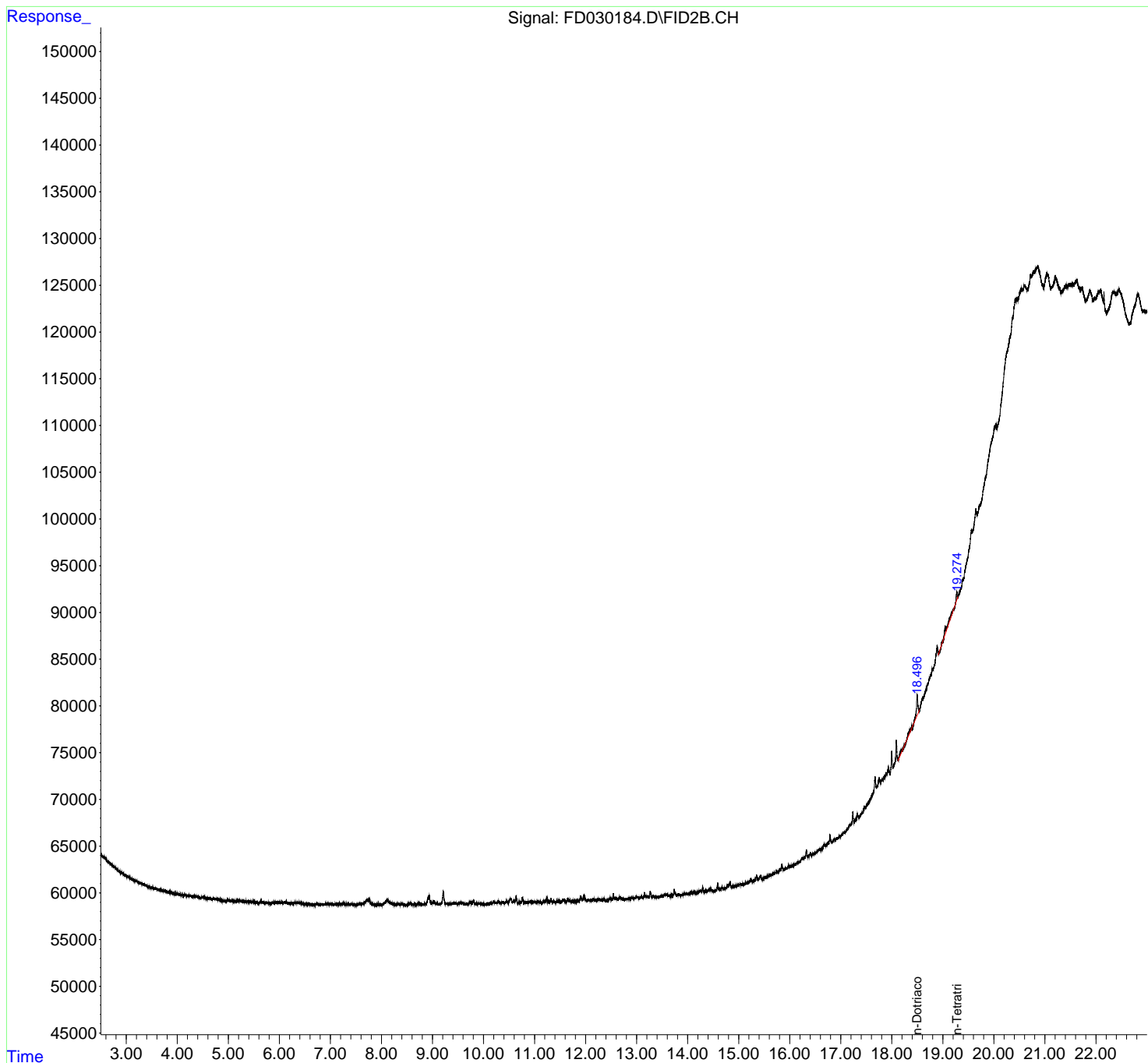
System Monitoring Compounds			
Target Compounds			
18) T n-Dotriacontane (C32)	18.497	58433	0.521 ug/ml
19) T n-Tetratriacontane (C34)	19.273	29619	0.334 ug/ml

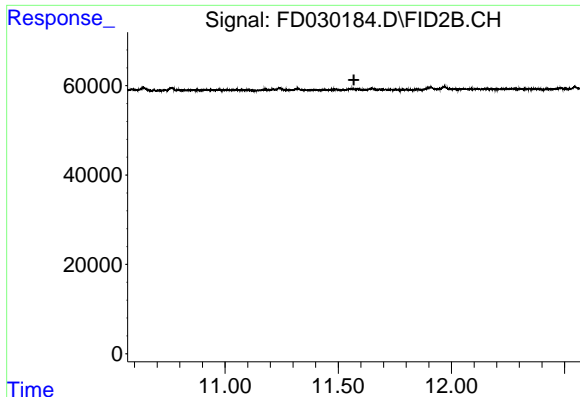
(f)=RT Delta > 1/2 Window (m)=manual int.

Data Path : Z:\pestpcbsrv\HPCHEM1\FID_D\Data\FD081919AL\
Data File : FD030184.D
Signal(s) : FID2B.CH
Acq On : 19 Aug 2019 13:39
Operator : DD\AJ
Sample : I.BLK
Misc :
ALS Vial : 51 Sample Multiplier: 1

Integration File: autoint1.e
Quant Time: Aug 20 02:10:07 2019
Quant Method : Z:\pestpcbsrv\HPCHEM1\FID_D\methods\Alaphatic EPH 080819.M
Quant Title : GC Extractables
QLast Update : Thu Aug 08 17:24:17 2019
Response via : Initial Calibration
Integrator: ChemStation 6890 Scale Mode: Large solvent peaks clipped

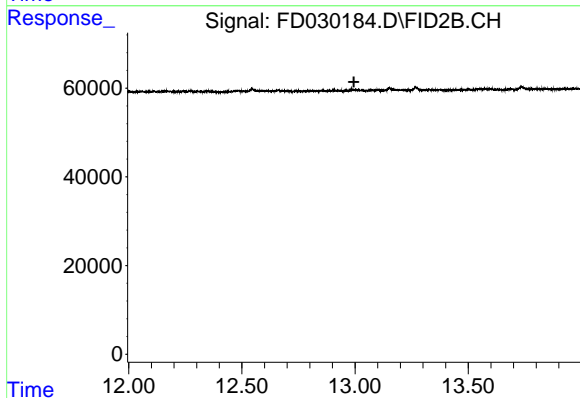
Volume Inj. : 1 ul
Signal Phase : Rxi-1ms
Signal Info : 20M x 0.18mm x 0.18um





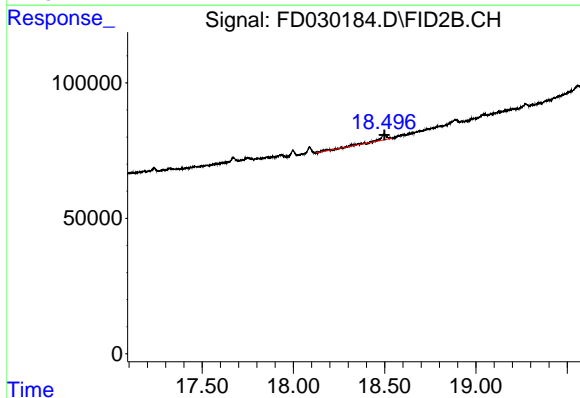
#9 ortho-Terphenyl (SURR)

R.T.: 0.000 min
 Exp R.T. : 11.569 min
 Response: 0
 Conc: N.D.



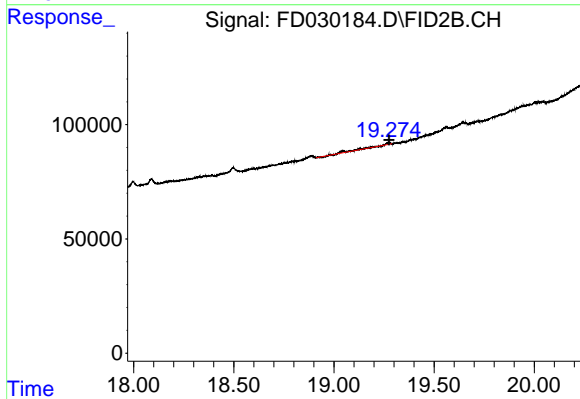
#12 1-chlorooctadecane (SURR)

R.T.: 0.000 min
 Exp R.T. : 12.995 min
 Response: 0
 Conc: N.D.



#18 n-Dotriacontane (C32)

R.T.: 18.497 min
 Delta R.T.: 0.000 min
 Response: 58433
 Conc: 0.52 ug/ml



#19 n-Tetratriacontane (C34)

R.T.: 19.273 min
 Delta R.T.: -0.002 min
 Response: 29619
 Conc: 0.33 ug/ml