

Data Path : P:\HPCHEM1\FID_E\Data\FE011218\
 Data File : FE025512.D
 Signal(s) : FID1B.CH
 Acq On : 12 Jan 2018 14:18
 Operator : UA/AJ
 Sample : I.BLK
 Misc :
 ALS Vial : 2 Sample Multiplier: 1

Integration File: autoint1.e
 Quant Time: Jan 12 18:25:22 2018
 Quant Method : P:\HPCHEM1\FID_E\methods\FE011218.M
 Quant Title :
 QLast Update : Fri Jan 12 18:22:53 2018
 Response via : Initial Calibration
 Integrator: ChemStation 6890 Scale Mode: Large solvent peaks clipped

Volume Inj. : 1uL
 Signal Phase : Rxi-lms
 Signal Info : 20mx0.18mmx0.18um

Compound	R.T.	Response	Conc Units

System Monitoring Compounds			
9) S TETRACOSANE-d50 (SURR...	14.862	3810784	20.952 ug/ml
Target Compounds			
6) N-OCTADECANE	11.437	55669	0.252 ug/ml
13) N-TRIACONTANE	17.917	42234	0.267 ug/ml
14) N-DOTRIACONTANE	18.749	95704	0.590 ug/ml
15) N-TETRATRIACONTANE	19.530	88025	0.567 ug/ml

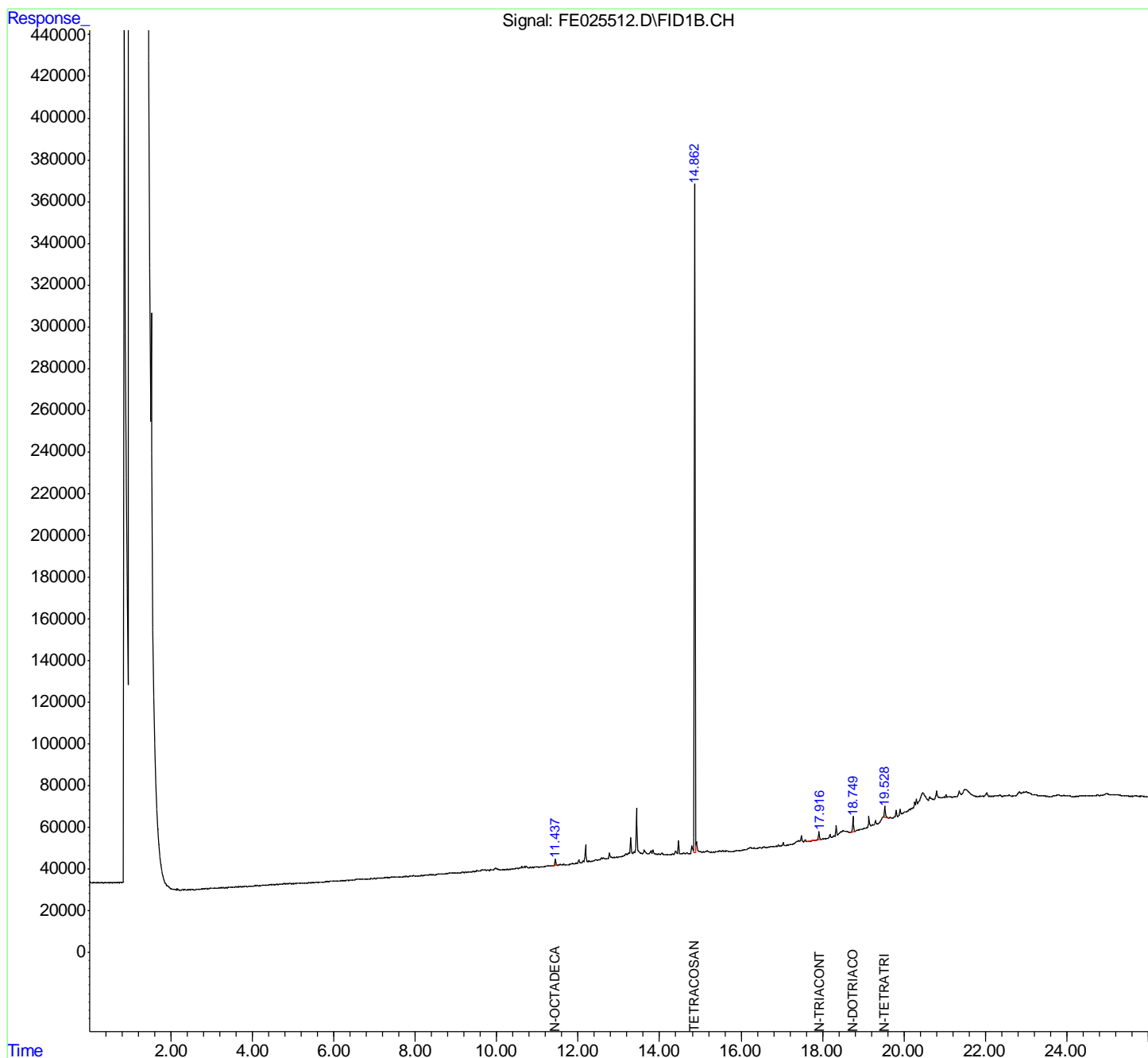
(f)=RT Delta > 1/2 Window

(m)=manual int.

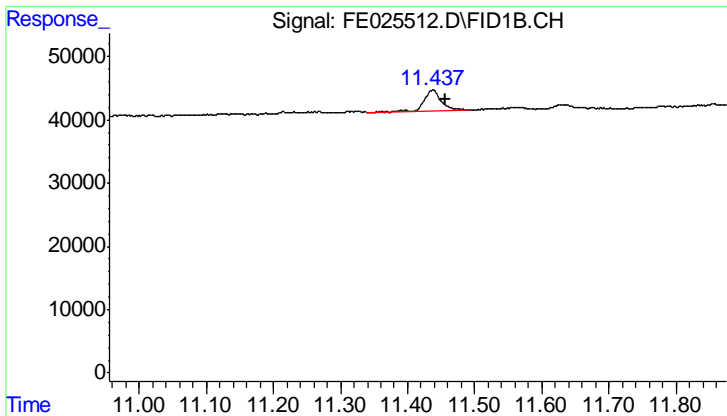
Data Path : P:\HPCHEM1\FID_E\Data\FE011218\
 Data File : FE025512.D
 Signal(s) : FID1B.CH
 Acq On : 12 Jan 2018 14:18
 Operator : UA/AJ
 Sample : I.BLK
 Misc :
 ALS Vial : 2 Sample Multiplier: 1

Integration File: autoint1.e
 Quant Time: Jan 12 18:25:22 2018
 Quant Method : P:\HPCHEM1\FID_E\methods\FE011218.M
 Quant Title :
 QLast Update : Fri Jan 12 18:22:53 2018
 Response via : Initial Calibration
 Integrator: ChemStation 6890 Scale Mode: Large solvent peaks clipped

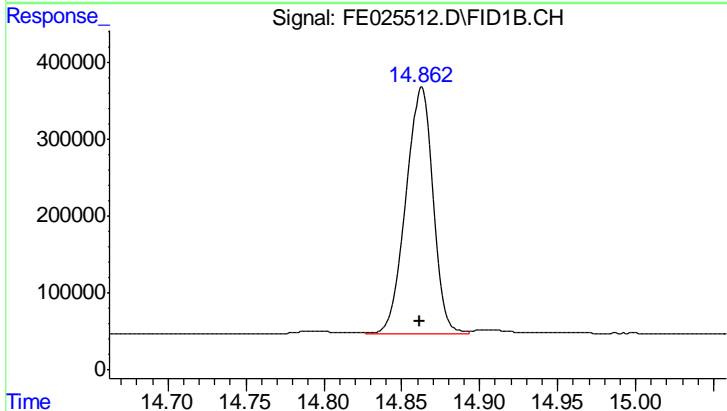
Volume Inj. : 1uL
 Signal Phase : Rxi-lms
 Signal Info : 20mx0.18mmx0.18um



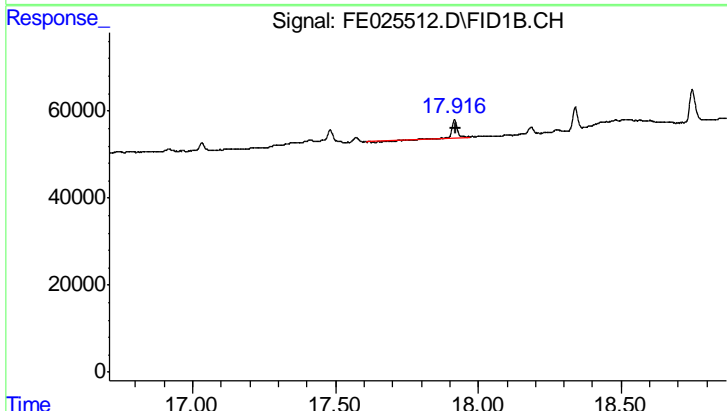
N-OCTADECA
 TETRACOSAN
 N-TRIACONT
 N-DOTRIACO
 N-TETRA TRI



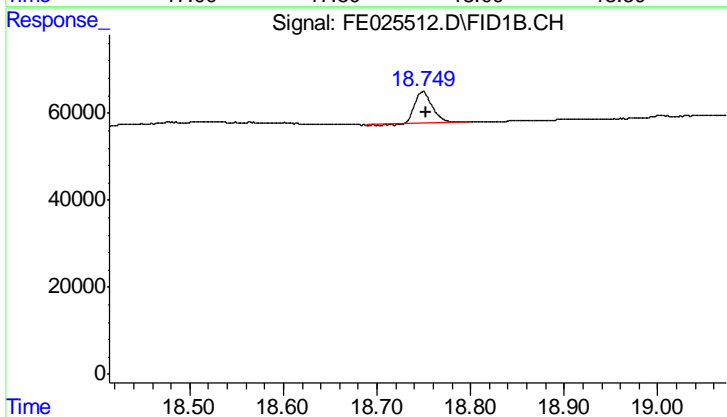
#6 N-OCTADECANE
 R.T.: 11.437 min
 Delta R.T.: -0.019 min
 Response: 55669
 Conc: 0.25 ug/ml



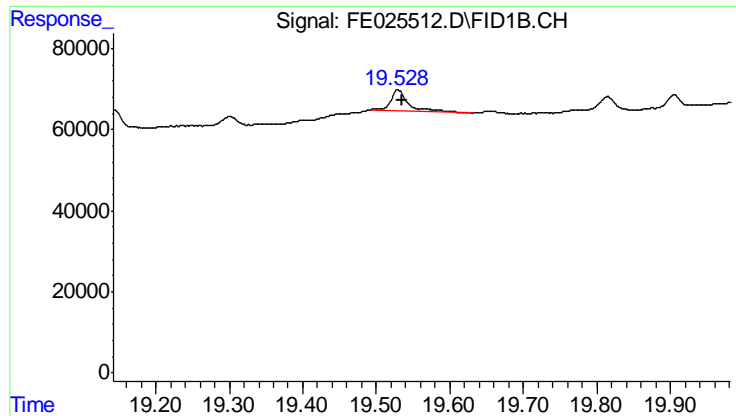
#9 TETRACOSANE-d50 (SURROGATE)
 R.T.: 14.862 min
 Delta R.T.: 0.000 min
 Response: 3810784
 Conc: 20.95 ug/ml



#13 N-TRIACONTANE
 R.T.: 17.917 min
 Delta R.T.: -0.004 min
 Response: 42234
 Conc: 0.27 ug/ml



#14 N-DOTRIACONTANE
 R.T.: 18.749 min
 Delta R.T.: -0.004 min
 Response: 95704
 Conc: 0.59 ug/ml



#15 N-TETRATRIACONTANE

R.T.: 19.530 min
Delta R.T.: -0.005 min
Response: 88025
Conc: 0.57 ug/ml