

Data Path : Z:\pestpcbsrv\HPCHEM1\FID_E\Data\FE010523AL\
 Data File : FE039650.D
 Signal(s) : FID1B.ch
 Acq On : 05 Jan 2023 11:52
 Operator : YP\AJ
 Sample : 20 PPM ALIPHATIC HC STD
 Misc :
 ALS Vial : 2 Sample Multiplier: 1

Instrument :
 FID_E
 ClientSampleId :

Integration File: autoint1.e
 Quant Time: Jan 06 02:53:06 2023
 Quant Method : Z:\pestpcbsrv\HPCHEM1\FID_E\methods\Aliphatic EPH 121722.M
 Quant Title : GC Extractables
 QLast Update : Sat Dec 17 15:09:52 2022
 Response via : Initial Calibration
 Integrator: ChemStation

Volume Inj. : 1 ul
 Signal Phase : Rxi-1ms
 Signal Info : 20M x 0.18mm x 0.18um

| Compound | R.T. | Response | Conc Units |
|--------------------------------|--------|------------|--------------|
| ----- | | | |
| System Monitoring Compounds | | | |
| 9) S ortho-Terphenyl (SURR) | 11.924 | 2874650 | 19.263 ug/ml |
| Spiked Amount | 50.000 | Recovery = | 38.53% |
| 12) S 1-chlorooctadecane (S... | 13.360 | 2233742 | 19.407 ug/ml |
| Spiked Amount | 50.000 | Recovery = | 38.81% |
| Target Compounds | | | |
| 1) T n-Nonane (C9) | 3.317 | 2241751 | 17.343 ug/ml |
| 2) T n-Decane (C10) | 4.568 | 2259459 | 17.732 ug/ml |
| 3) T A~Naphthalene (C11.7) | 6.271 | 2589312 | 17.912 ug/ml |
| 4) T n-Dodecane (C12) | 6.732 | 2303387 | 17.742 ug/ml |
| 5) T A~2-methylnaphthalene... | 7.366 | 2459551 | 18.161 ug/ml |
| 6) T n-Tetradecane (C14) | 8.558 | 2385036 | 17.999 ug/ml |
| 7) T n-Hexadecane (C16) | 10.164 | 2528774 | 18.381 ug/ml |
| 8) T n-Octadecane (C18) | 11.606 | 2636235 | 18.822 ug/ml |
| 10) T n-Eicosane (C20) | 12.915 | 2618871 | 19.185 ug/ml |
| 11) T n-Heneicosane (C21) | 13.528 | 2521873 | 18.490 ug/ml |
| 13) T n-Docosane (C22) | 14.113 | 2644900 | 19.552 ug/ml |
| 14) T n-Tetracosane (C24) | 15.216 | 2682820 | 19.985 ug/ml |
| 15) T n-Hexacosane (C26) | 16.237 | 2659494 | 20.425 ug/ml |
| 16) T n-Octacosane (C28) | 17.186 | 2746543 | 21.340 ug/ml |
| 17) T n-Tricontane (C30) | 18.075 | 2757743 | 21.419 ug/ml |
| 18) T n-Dotriacontane (C32) | 18.907 | 3028204 | 23.384 ug/ml |
| 19) T n-Tetratriacontane (C34) | 19.691 | 2783434 | 22.062 ug/ml |
| 20) T n-Hexatriacontane (C36) | 20.433 | 2499965 | 20.675 ug/ml |
| 21) T n-Octatriacontane (C38) | 21.168 | 2391605 | 19.366 ug/ml |
| 22) T n-Tetracontane (C40) | 22.075 | 2375818 | 18.918 ug/ml |
| ----- | | | |

(f)=RT Delta > 1/2 Window

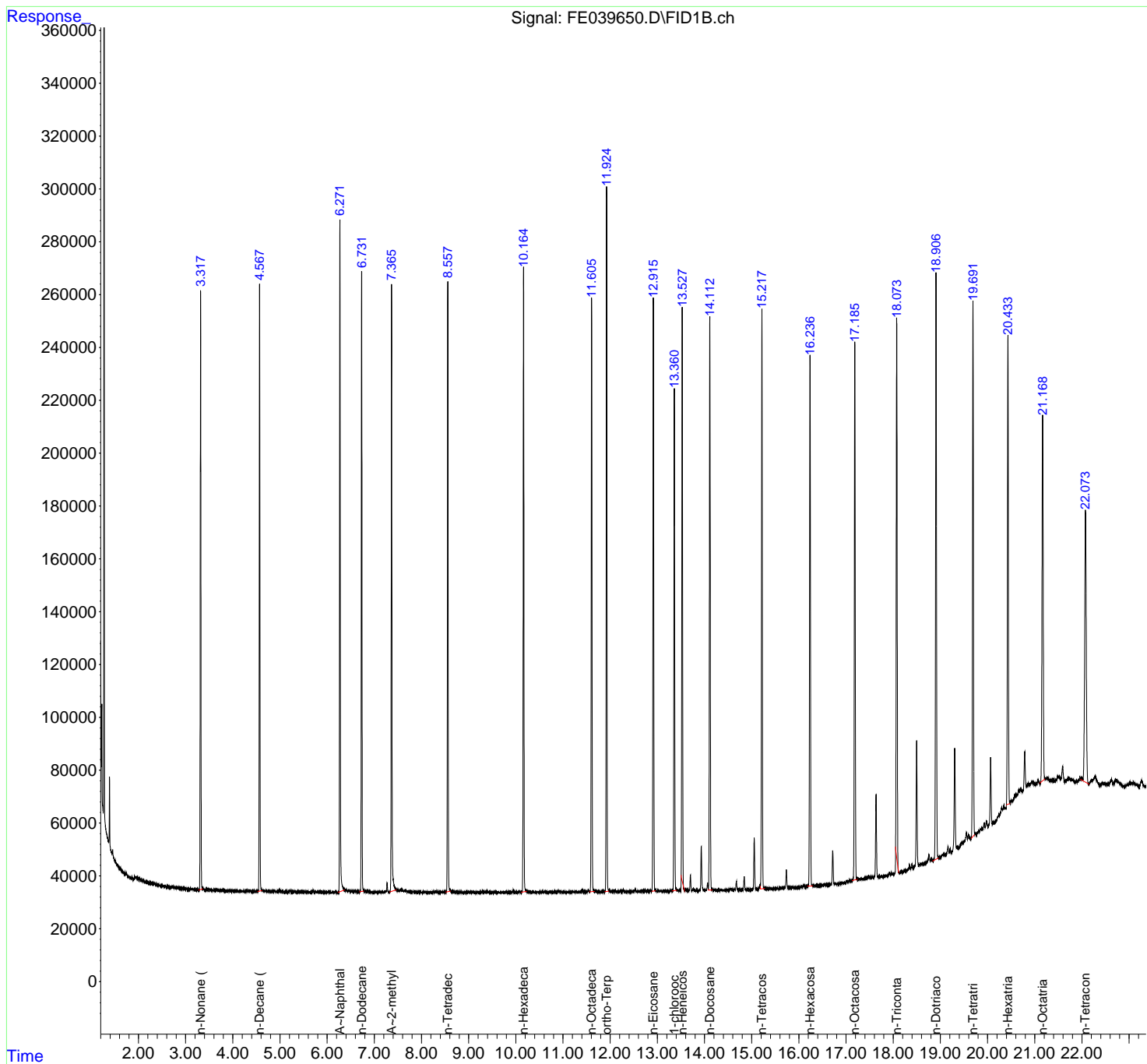
(m)=manual int.

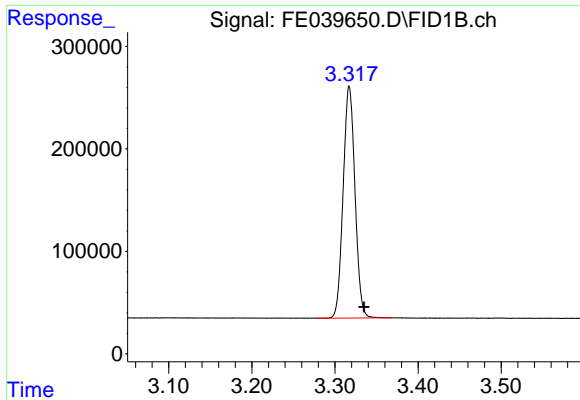
Data Path : Z:\pestpcbsrv\HPCHEM1\FID_E\Data\FE010523AL\
 Data File : FE039650.D
 Signal(s) : FID1B.ch
 Acq On : 05 Jan 2023 11:52
 Operator : YP\AJ
 Sample : 20 PPM ALIPHATIC HC STD
 Misc :
 ALS Vial : 2 Sample Multiplier: 1

Instrument :
 FID_E
 ClientSampleId :

Integration File: autoint1.e
 Quant Time: Jan 06 02:53:06 2023
 Quant Method : Z:\pestpcbsrv\HPCHEM1\FID_E\methods\Aliphatic EPH 121722.M
 Quant Title : GC Extractables
 QLast Update : Sat Dec 17 15:09:52 2022
 Response via : Initial Calibration
 Integrator: ChemStation

Volume Inj. : 1 ul
 Signal Phase : Rxi-1ms
 Signal Info : 20M x 0.18mm x 0.18um

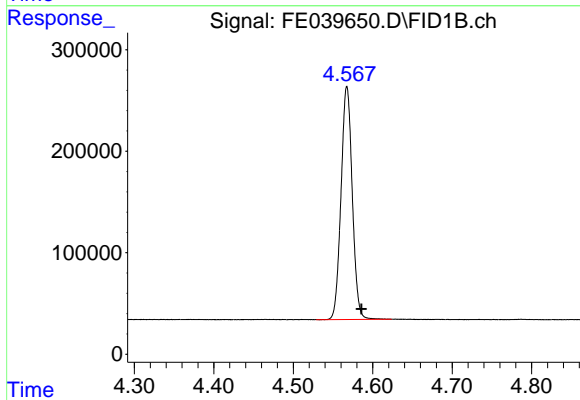




#1 n-Nonane (C9)

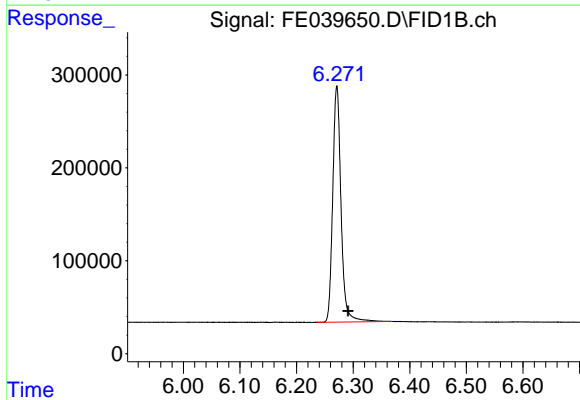
R.T.: 3.317 min
 Delta R.T.: -0.018 min
 Response: 2241751
 Conc: 17.34 ug/ml

Instrument :
 FID_E
 ClientSampleId :



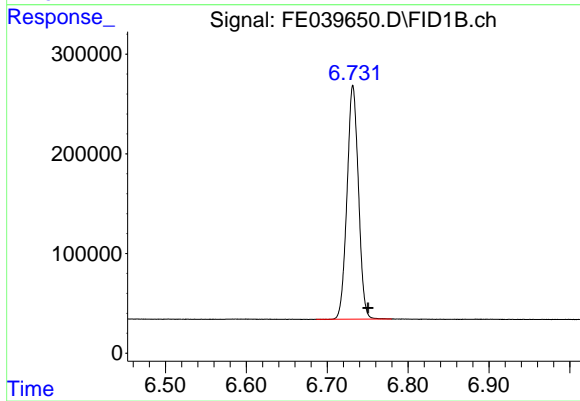
#2 n-Decane (C10)

R.T.: 4.568 min
 Delta R.T.: -0.018 min
 Response: 2259459
 Conc: 17.73 ug/ml



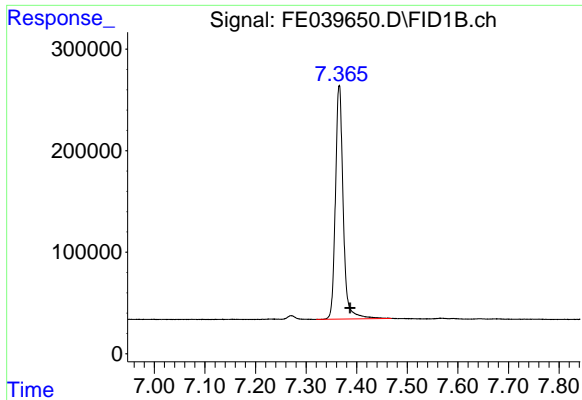
#3 A~Naphthalene (C11.7)

R.T.: 6.271 min
 Delta R.T.: -0.020 min
 Response: 2589312
 Conc: 17.91 ug/ml



#4 n-Dodecane (C12)

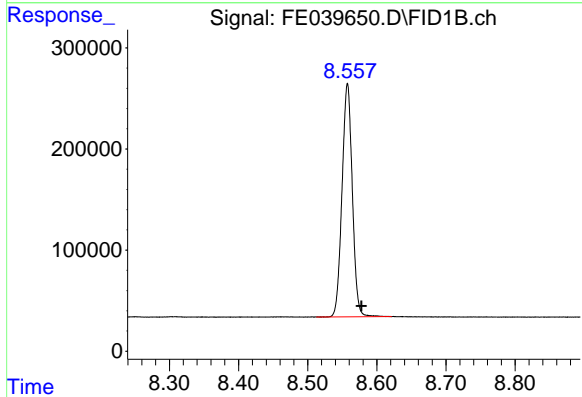
R.T.: 6.732 min
 Delta R.T.: -0.019 min
 Response: 2303387
 Conc: 17.74 ug/ml



#5 A~2-methylnaphthalene (C12.89)

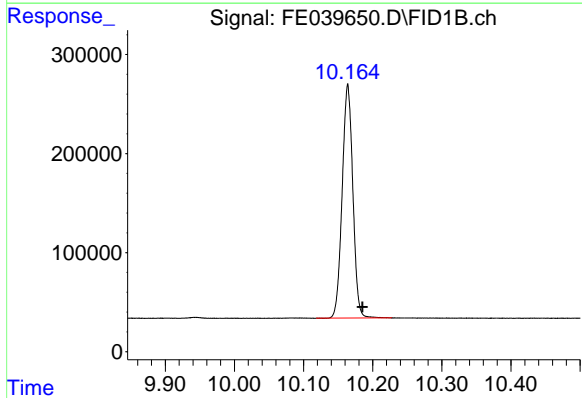
R.T.: 7.366 min
Delta R.T.: -0.021 min
Response: 2459551
Conc: 18.16 ug/ml

Instrument :
FID_E
ClientSampleId :



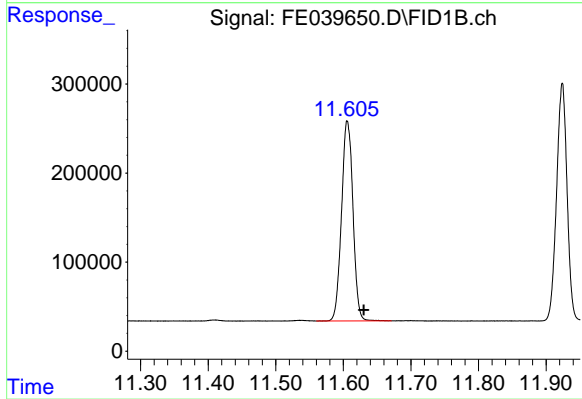
#6 n-Tetradecane (C14)

R.T.: 8.558 min
Delta R.T.: -0.020 min
Response: 2385036
Conc: 18.00 ug/ml



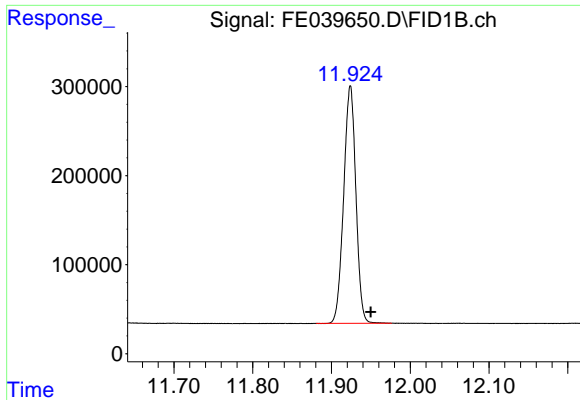
#7 n-Hexadecane (C16)

R.T.: 10.164 min
Delta R.T.: -0.021 min
Response: 2528774
Conc: 18.38 ug/ml



#8 n-Octadecane (C18)

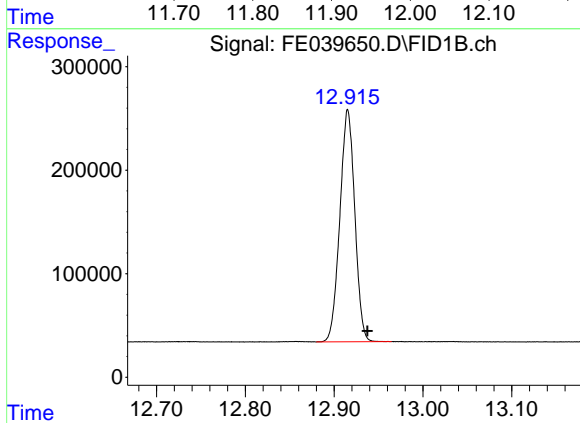
R.T.: 11.606 min
Delta R.T.: -0.024 min
Response: 2636235
Conc: 18.82 ug/ml



#9 ortho-Terphenyl (SURR)

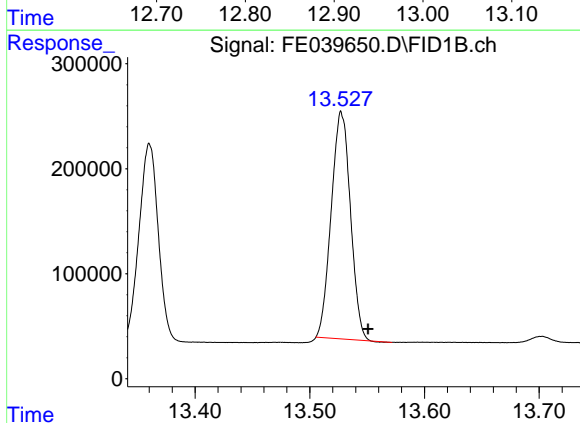
R.T.: 11.924 min
 Delta R.T.: -0.026 min
 Response: 2874650
 Conc: 19.26 ug/ml

Instrument :
 FID_E
 ClientSampleId :



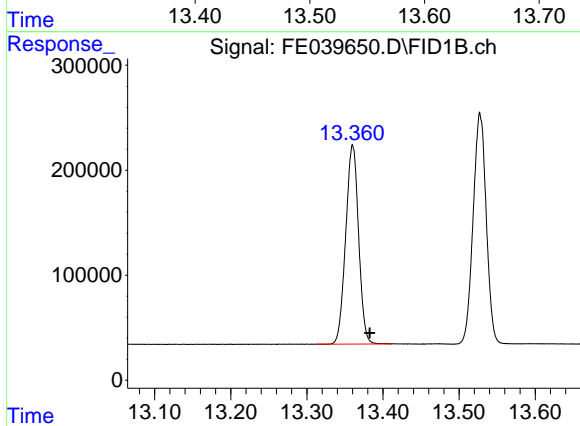
#10 n-Eicosane (C20)

R.T.: 12.915 min
 Delta R.T.: -0.022 min
 Response: 2618871
 Conc: 19.18 ug/ml



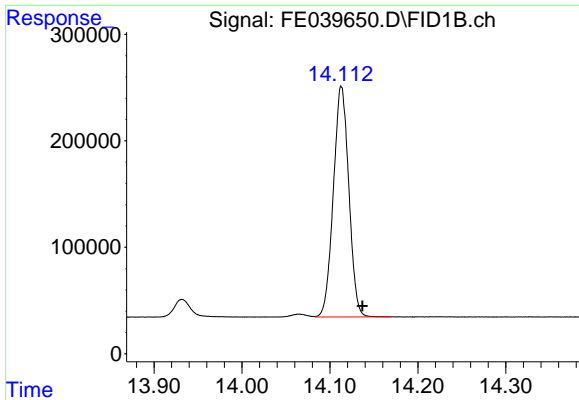
#11 n-Heneicosane (C21)

R.T.: 13.528 min
 Delta R.T.: -0.023 min
 Response: 2521873
 Conc: 18.49 ug/ml



#12 1-chlorooctadecane (SURR)

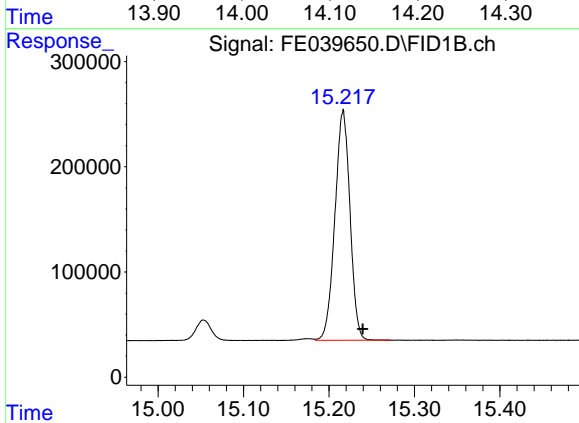
R.T.: 13.360 min
 Delta R.T.: -0.023 min
 Response: 2233742
 Conc: 19.41 ug/ml



#13 n-Docosane (C22)

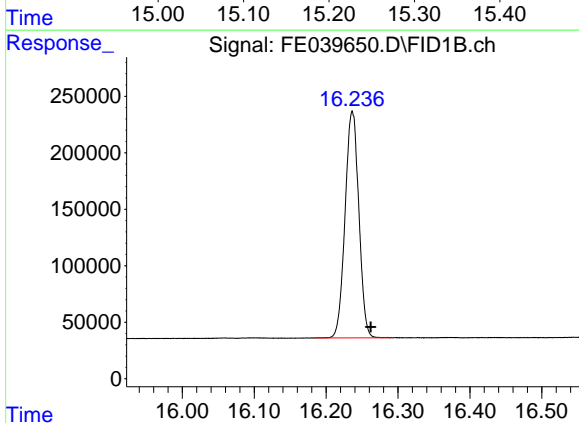
R.T.: 14.113 min
 Delta R.T.: -0.024 min
 Response: 2644900
 Conc: 19.55 ug/ml

Instrument :
 FID_E
 ClientSampleId :



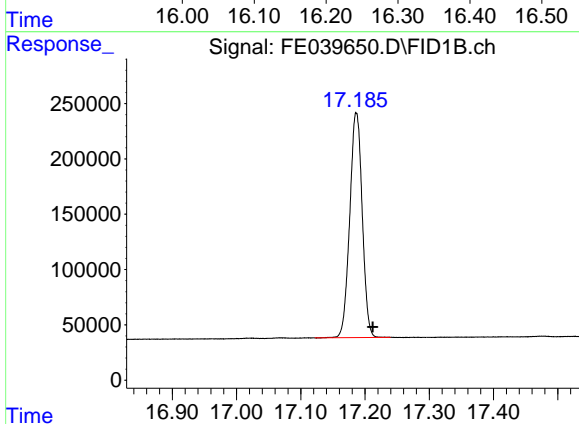
#14 n-Tetracosane (C24)

R.T.: 15.216 min
 Delta R.T.: -0.023 min
 Response: 2682820
 Conc: 19.99 ug/ml



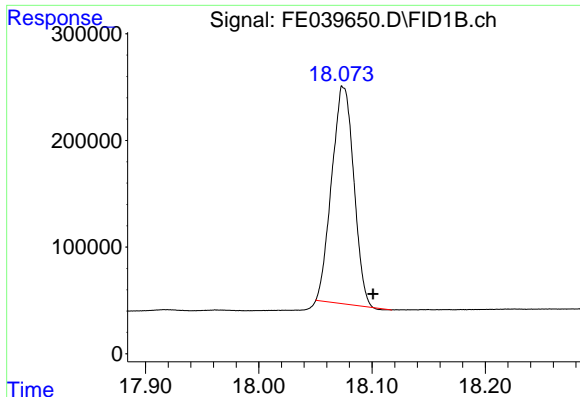
#15 n-Hexacosane (C26)

R.T.: 16.237 min
 Delta R.T.: -0.025 min
 Response: 2659494
 Conc: 20.42 ug/ml



#16 n-Octacosane (C28)

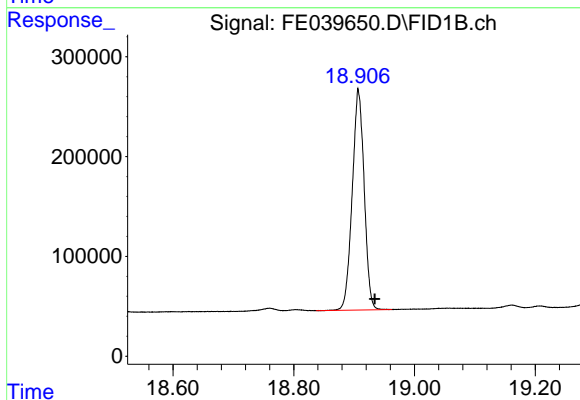
R.T.: 17.186 min
 Delta R.T.: -0.026 min
 Response: 2746543
 Conc: 21.34 ug/ml



#17 n-Tricontane (C30)

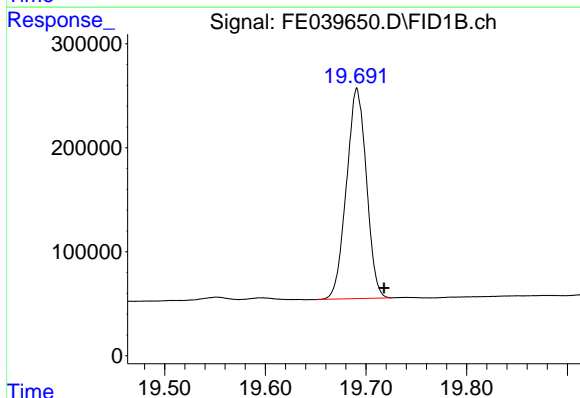
R.T.: 18.075 min
 Delta R.T.: -0.026 min
 Response: 2757743
 Conc: 21.42 ug/ml

Instrument :
 FID_E
 ClientSampleId :



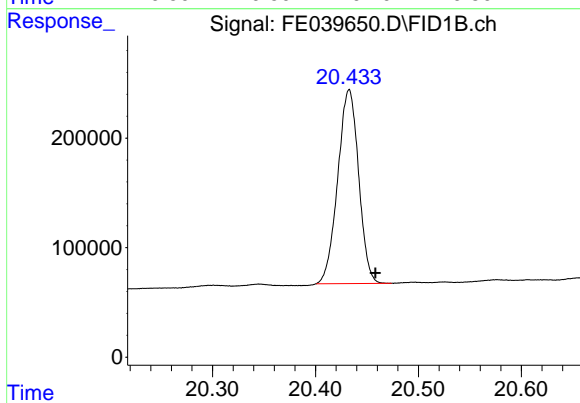
#18 n-Dotriacontane (C32)

R.T.: 18.907 min
 Delta R.T.: -0.027 min
 Response: 3028204
 Conc: 23.38 ug/ml



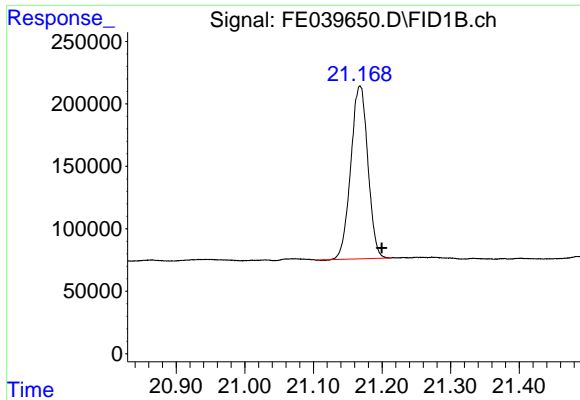
#19 n-Tetratriacontane (C34)

R.T.: 19.691 min
 Delta R.T.: -0.027 min
 Response: 2783434
 Conc: 22.06 ug/ml



#20 n-Hexatriacontane (C36)

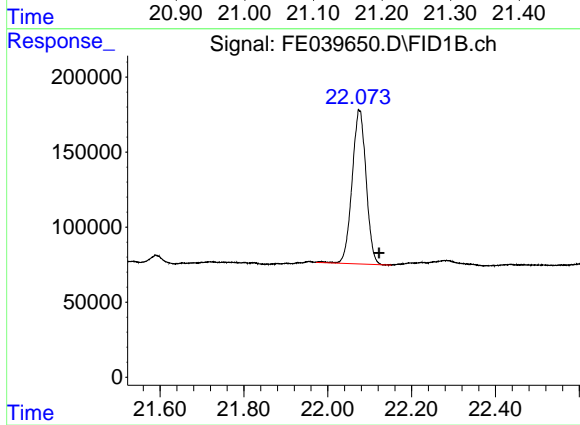
R.T.: 20.433 min
 Delta R.T.: -0.025 min
 Response: 2499965
 Conc: 20.68 ug/ml



#21 n-Octatriacontane (C38)

R.T.: 21.168 min
Delta R.T.: -0.032 min
Response: 2391605
Conc: 19.37 ug/ml

Instrument :
FID_E
ClientSampleId :



#22 n-Tetracontane (C40)

R.T.: 22.075 min
Delta R.T.: -0.048 min
Response: 2375818
Conc: 18.92 ug/ml