

Data Path : Z:\pestpcbsrv\HPCHEM1\FID\_E\Data\FE010722AL\  
 Data File : FE034667.D  
 Signal(s) : FID1B.CH  
 Acq On : 07 Jan 2022 18:42  
 Operator : AJ\MA  
 Sample : N1049-03D  
 Misc :  
 ALS Vial : 9 Sample Multiplier: 1

Instrument :  
 FID\_E  
 ClientSampleId :  
 7211979

Integration File: autoint1.e  
 Quant Time: Jan 07 22:50:22 2022  
 Quant Method : Z:\pestpcbsrv\HPCHEM1\FID\_E\methods\Aliphatic EPH 010622.M  
 Quant Title : GC Extractables  
 QLast Update : Fri Jan 07 12:52:40 2022  
 Response via : Initial Calibration  
 Integrator: ChemStation 6890 Scale Mode: Large solvent peaks clipped

Volume Inj. : 1 ul  
 Signal Phase : Rxi-1ms  
 Signal Info : 20M x 0.18mm x 0.18um

| Compound                       | R.T.   | Response | Conc Units   |
|--------------------------------|--------|----------|--------------|
| -----                          |        |          |              |
| System Monitoring Compounds    |        |          |              |
| 9) S ortho-Terphenyl (SURR)    | 11.095 | 5164589  | 37.332 ug/ml |
| Spiked Amount                  | 50.000 | Recovery | = 74.66%     |
| 12) S 1-chlorooctadecane (S... | 12.527 | 4648502  | 44.150 ug/ml |
| Spiked Amount                  | 50.000 | Recovery | = 88.30%     |

Target Compounds

-----

(f)=RT Delta > 1/2 Window

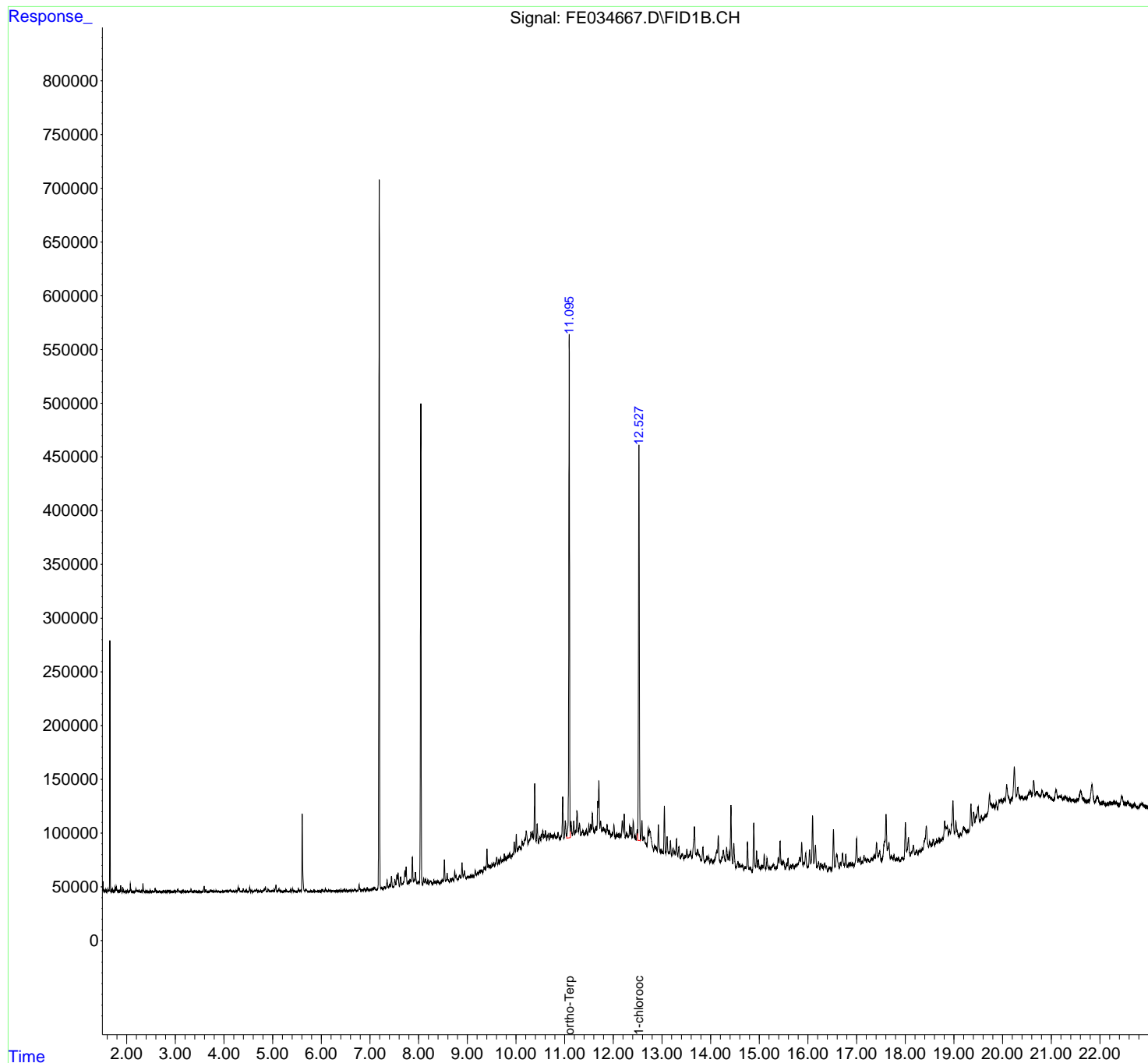
(m)=manual int.

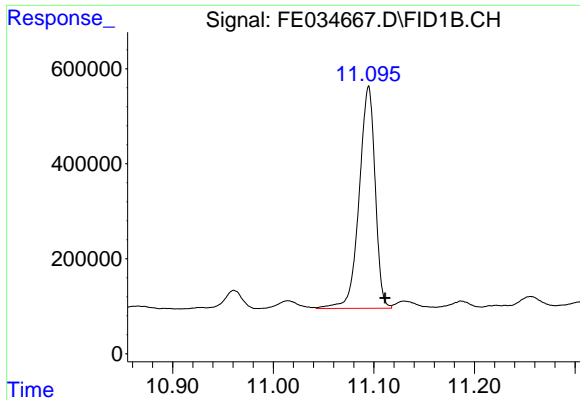
Data Path : Z:\pestpcbsrv\HPCHEM1\FID\_E\Data\FE010722AL\  
Data File : FE034667.D  
Signal(s) : FID1B.CH  
Acq On : 07 Jan 2022 18:42  
Operator : AJ\MA  
Sample : N1049-03D  
Misc :  
ALS Vial : 9 Sample Multiplier: 1

Instrument :  
FID\_E  
ClientSampleId :  
7211979

Integration File: autoint1.e  
Quant Time: Jan 07 22:50:22 2022  
Quant Method : Z:\pestpcbsrv\HPCHEM1\FID\_E\methods\Aliphatic EPH 010622.M  
Quant Title : GC Extractables  
QLast Update : Fri Jan 07 12:52:40 2022  
Response via : Initial Calibration  
Integrator: ChemStation 6890 Scale Mode: Large solvent peaks clipped

Volume Inj. : 1 ul  
Signal Phase : Rxi-1ms  
Signal Info : 20M x 0.18mm x 0.18um

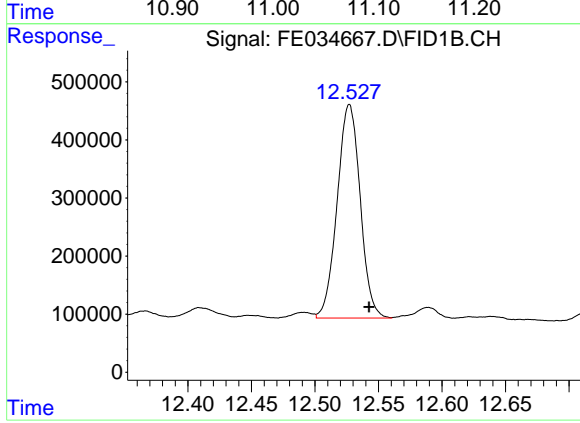




#9 ortho-Terphenyl (SURR)

R.T.: 11.095 min  
Delta R.T.: -0.016 min  
Response: 5164589  
Conc: 37.33 ug/ml

Instrument :  
FID\_E  
ClientSampleId :  
7211979



#12 1-chlorooctadecane (SURR)

R.T.: 12.527 min  
Delta R.T.: -0.015 min  
Response: 4648502  
Conc: 44.15 ug/ml