

Data Path : Z:\pestpcbsrv\HPCHEM1\FID_E\Data\FE010722AL\
 Data File : FE034676.D
 Signal(s) : FID1B.CH
 Acq On : 07 Jan 2022 23:20
 Operator : AJ\MA
 Sample : N1064-02
 Misc :
 ALS Vial : 18 Sample Multiplier: 1

Instrument :
 FID_E
ClientSampleId :
 HD-02-010622-EPH-2

Integration File: autoint1.e
 Quant Time: Jan 07 23:48:53 2022
 Quant Method : Z:\pestpcbsrv\HPCHEM1\FID_E\methods\Aliphatic EPH 010622.M
 Quant Title : GC Extractables
 QLast Update : Fri Jan 07 12:52:40 2022
 Response via : Initial Calibration
 Integrator: ChemStation 6890 Scale Mode: Large solvent peaks clipped

Volume Inj. : 1 ul
 Signal Phase : Rxi-1ms
 Signal Info : 20M x 0.18mm x 0.18um

Compound	R.T.	Response	Conc Units

System Monitoring Compounds			
9) S ortho-Terphenyl (SURR)	11.093	5188303	37.503 ug/ml
Spiked Amount	50.000	Recovery	= 75.01%
12) S 1-chlorooctadecane (S...	12.526	4844020	46.006 ug/ml
Spiked Amount	50.000	Recovery	= 92.01%

Target Compounds

(f)=RT Delta > 1/2 Window

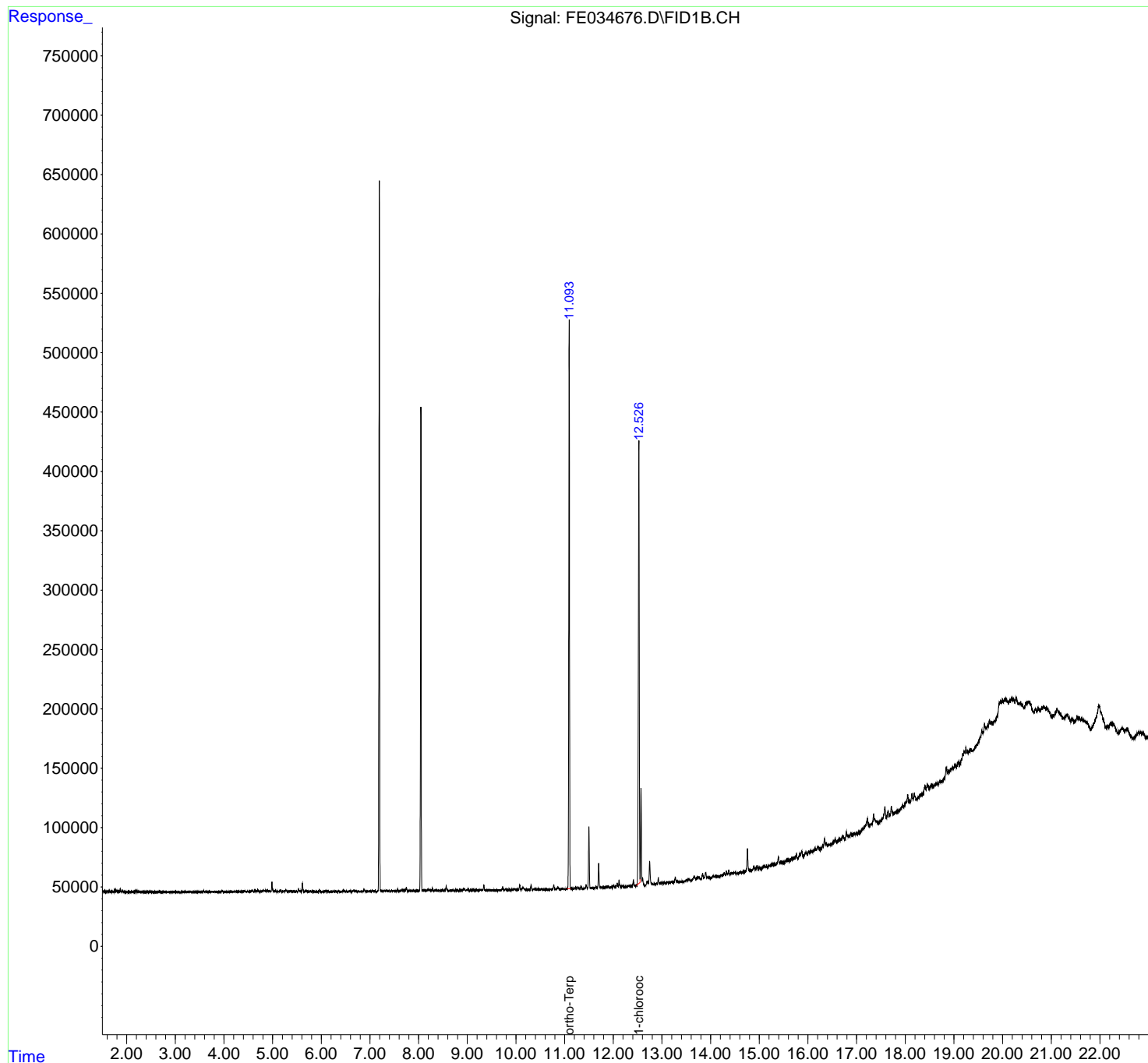
(m)=manual int.

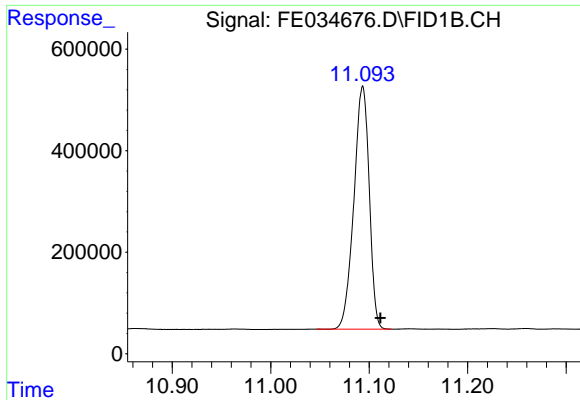
Data Path : Z:\pestpcbsrv\HPCHEM1\FID_E\Data\FE010722AL\
Data File : FE034676.D
Signal(s) : FID1B.CH
Acq On : 07 Jan 2022 23:20
Operator : AJ\MA
Sample : N1064-02
Misc :
ALS Vial : 18 Sample Multiplier: 1

Instrument :
FID_E
ClientSampleId :
HD-02-010622-EPH-2

Integration File: autoint1.e
Quant Time: Jan 07 23:48:53 2022
Quant Method : Z:\pestpcbsrv\HPCHEM1\FID_E\methods\Aliphatic EPH 010622.M
Quant Title : GC Extractables
QLast Update : Fri Jan 07 12:52:40 2022
Response via : Initial Calibration
Integrator: ChemStation 6890 Scale Mode: Large solvent peaks clipped

Volume Inj. : 1 ul
Signal Phase : Rxi-1ms
Signal Info : 20M x 0.18mm x 0.18um

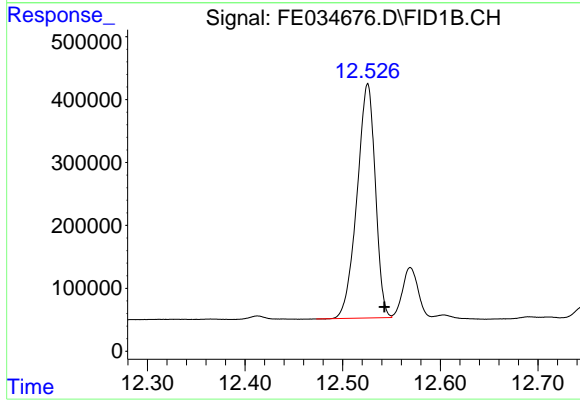




#9 ortho-Terphenyl (SURR)

R.T.: 11.093 min
Delta R.T.: -0.018 min
Response: 5188303
Conc: 37.50 ug/ml

Instrument :
FID_E
ClientSampleId :
HD-02-010622-EPH-2



#12 1-chlorooctadecane (SURR)

R.T.: 12.526 min
Delta R.T.: -0.017 min
Response: 4844020
Conc: 46.01 ug/ml