

Data Path : Z:\pestpcbsrv\HPCHEM1\FID\_E\Data\FE010722AL\  
Data File : FE034681.D  
Signal(s) : FID1B.CH  
Acq On : 08 Jan 2022 1:54  
Operator : AJ\MA  
Sample : I.BLK  
Misc :  
ALS Vial : 1 Sample Multiplier: 1

Instrument :  
FID\_E  
ClientSampleId :  
I.BLK

Integration File: autoint1.e  
Quant Time: Jan 08 02:38:49 2022  
Quant Method : Z:\pestpcbsrv\HPCHEM1\FID\_E\methods\Aliphatic EPH 010622.M  
Quant Title : GC Extractables  
QLast Update : Fri Jan 07 12:52:40 2022  
Response via : Initial Calibration  
Integrator: ChemStation 6890 Scale Mode: Large solvent peaks clipped

Volume Inj. : 1 ul  
Signal Phase : Rxi-1ms  
Signal Info : 20M x 0.18mm x 0.18um

Compound	R.T.	Response	Conc Units
-----			
System Monitoring Compounds			
Target Compounds			
-----			

(f)=RT Delta > 1/2 Window

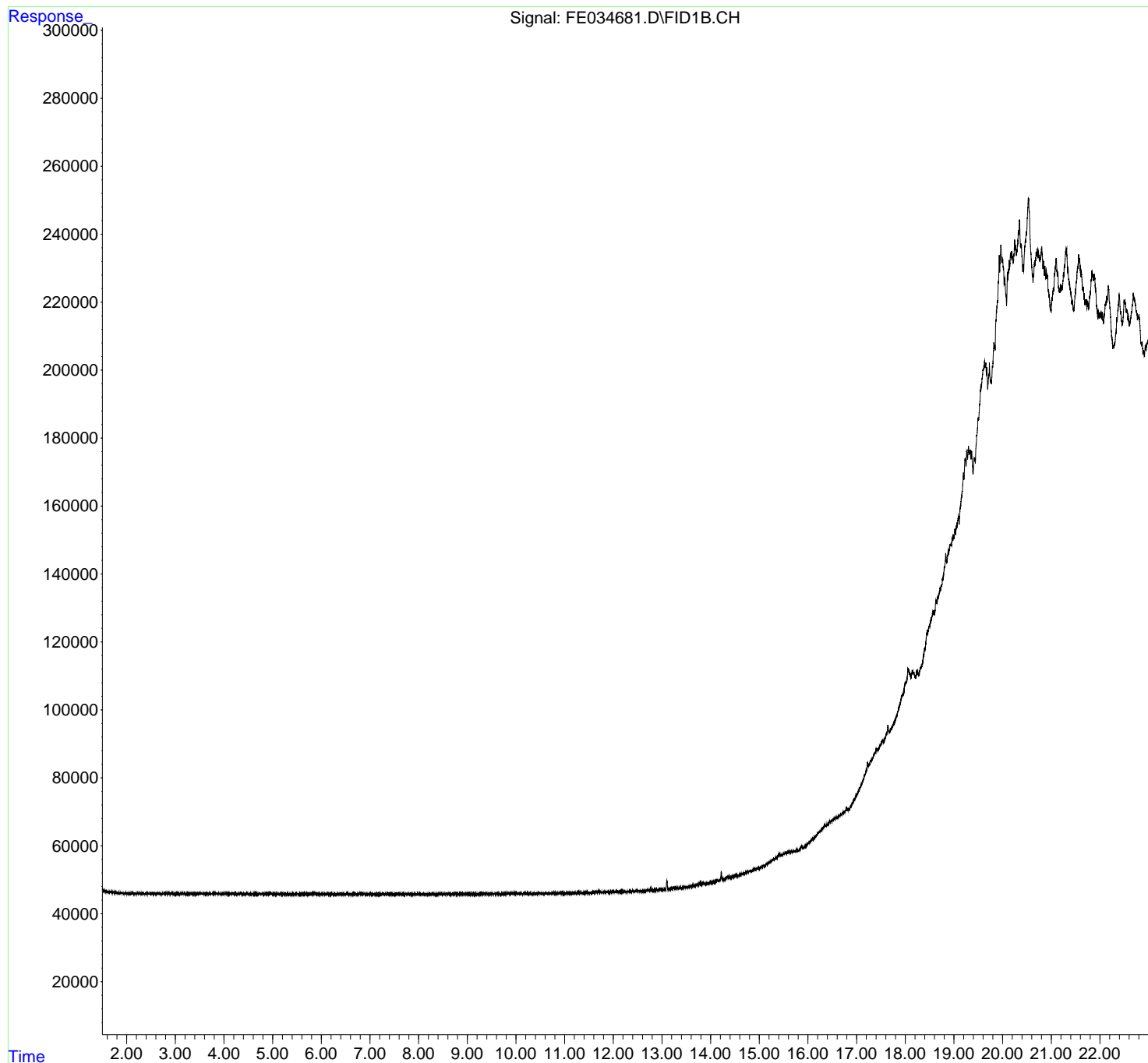
(m)=manual int.

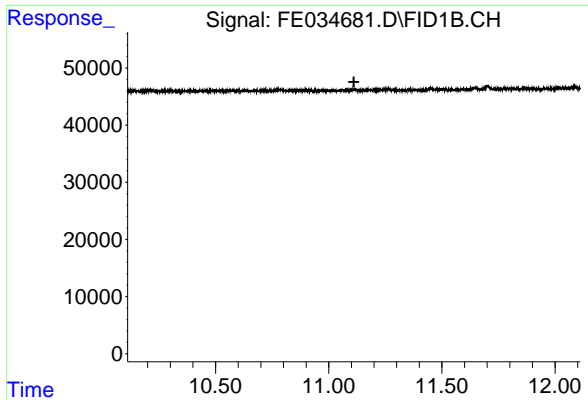
Data Path : Z:\pestpcbsrv\HPCHEM1\FID\_E\Data\FE010722AL\  
Data File : FE034681.D  
Signal(s) : FID1B.CH  
Acq On : 08 Jan 2022 1:54  
Operator : AJ\MA  
Sample : I.BLK  
Misc :  
ALS Vial : 1 Sample Multiplier: 1

Instrument :  
FID\_E  
ClientSampleId :  
I.BLK

Integration File: autoint1.e  
Quant Time: Jan 08 02:38:49 2022  
Quant Method : Z:\pestpcbsrv\HPCHEM1\FID\_E\methods\Aliphatic EPH 010622.M  
Quant Title : GC Extractables  
QLast Update : Fri Jan 07 12:52:40 2022  
Response via : Initial Calibration  
Integrator: ChemStation 6890 Scale Mode: Large solvent peaks clipped

Volume Inj. : 1 ul  
Signal Phase : Rxi-1ms  
Signal Info : 20M x 0.18mm x 0.18um

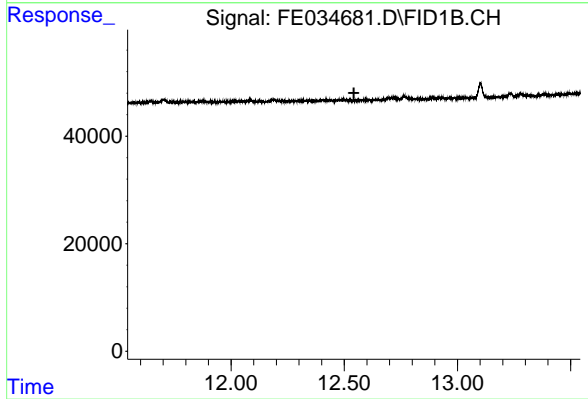




#9 ortho-Terphenyl (SURR)

R.T.: 0.000 min  
Exp R.T. : 11.111 min  
Response: 0  
Conc: N.D.

Instrument :  
FID\_E  
ClientSampleId :  
I.BLK



#12 1-chlorooctadecane (SURR)

R.T.: 0.000 min  
Exp R.T. : 12.543 min  
Response: 0  
Conc: N.D.