

Data Path : Z:\pestpcbsrv\HPCHEM1\FID_E\Data\FE010722AL\
 Data File : FE034689.D
 Signal(s) : FID1B.CH
 Acq On : 08 Jan 2022 6:31
 Operator : AJ\MA
 Sample : N1050-01DL 5X
 Misc :
 ALS Vial : 30 Sample Multiplier: 1

Instrument :
 FID_E
ClientSampleId :
 VNJ-236DL

Manual Integrations
APPROVED

Reviewed By :Yogesh Patel 01/10/2022
 Supervised By :Ankita Jodhani 01/10/2022

Integration File: autoint1.e
 Quant Time: Jan 09 23:47:46 2022
 Quant Method : Z:\pestpcbsrv\HPCHEM1\FID_E\methods\Aliphatic EPH 010622.M
 Quant Title : GC Extractables
 QLast Update : Fri Jan 07 12:52:40 2022
 Response via : Initial Calibration
 Integrator: ChemStation 6890 Scale Mode: Large solvent peaks clipped

Volume Inj. : 1 ul
 Signal Phase : Rxi-1ms
 Signal Info : 20M x 0.18mm x 0.18um

Compound	R.T.	Response	Conc Units

System Monitoring Compounds			
9) S ortho-Terphenyl (SURR)	11.100	4383085	31.683 ug/mlm
Spiked Amount	50.000	Recovery	= 63.37%
12) S 1-chlorooctadecane (S...	12.552	921319	8.750 ug/mlm
Spiked Amount	50.000	Recovery	= 17.50%

Target Compounds

(f)=RT Delta > 1/2 Window

(m)=manual int.

Data Path : Z:\pestpcbsrv\HPCHEM1\FID_E\Data\FE010722AL\
 Data File : FE034689.D
 Signal(s) : FID1B.CH
 Acq On : 08 Jan 2022 6:31
 Operator : AJ\MA
 Sample : N1050-01DL 5X
 Misc :
 ALS Vial : 30 Sample Multiplier: 1

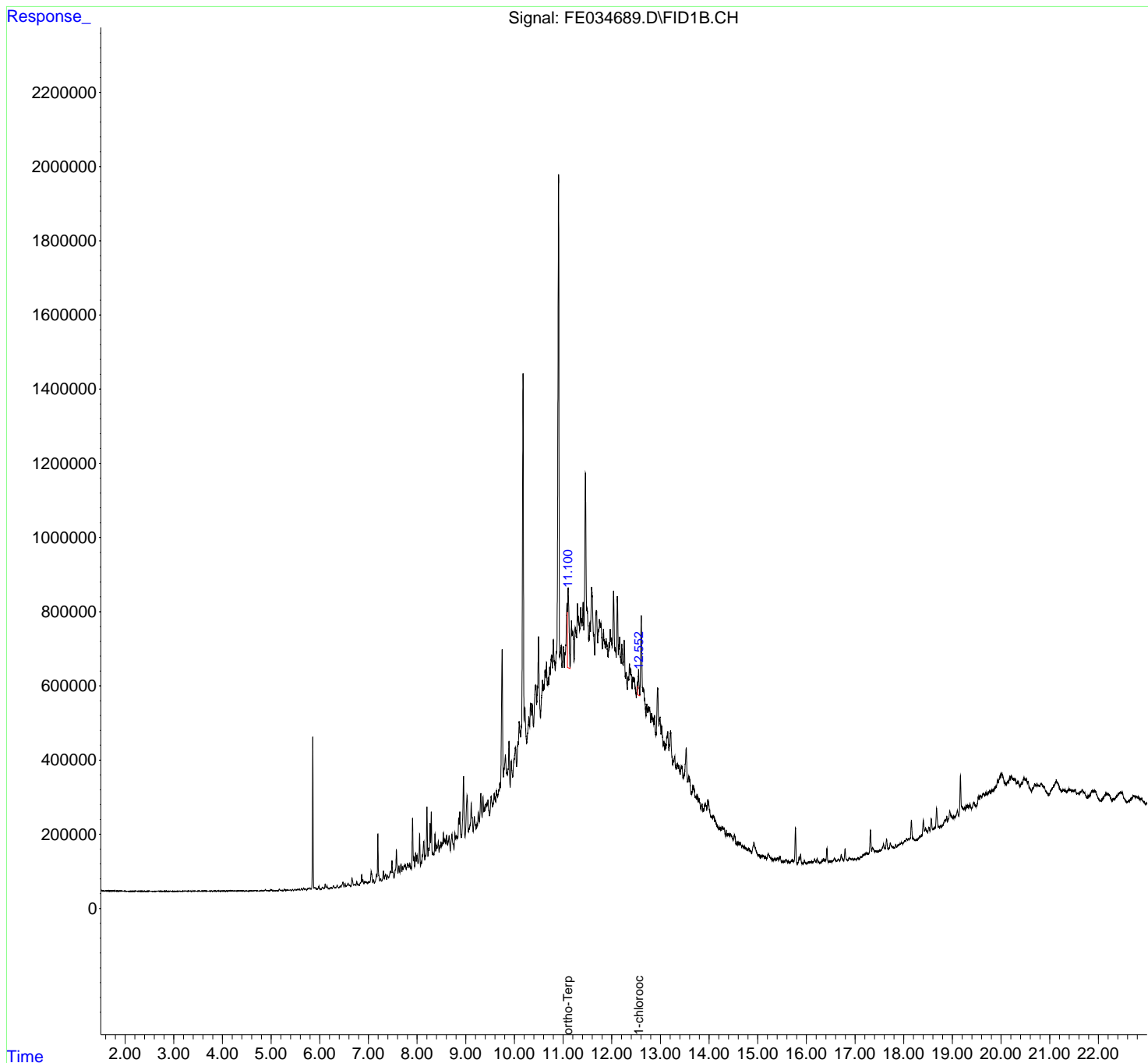
Instrument :
 FID_E
ClientSampleId :
 VNJ-236DL

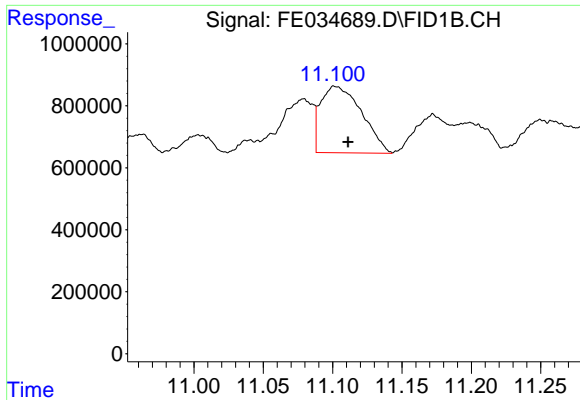
Manual Integrations
APPROVED

Reviewed By :Yogesh Patel 01/10/2022
 Supervised By :Ankita Jodhani 01/10/2022

Integration File: autoint1.e
 Quant Time: Jan 09 23:47:46 2022
 Quant Method : Z:\pestpcbsrv\HPCHEM1\FID_E\methods\Aliphatic EPH 010622.M
 Quant Title : GC Extractables
 QLast Update : Fri Jan 07 12:52:40 2022
 Response via : Initial Calibration
 Integrator: ChemStation 6890 Scale Mode: Large solvent peaks clipped

Volume Inj. : 1 ul
 Signal Phase : Rxi-1ms
 Signal Info : 20M x 0.18mm x 0.18um





#9 ortho-Terphenyl (SURR)

R.T.: 11.100 min
 Delta R.T.: -0.011 min
 Response: 4383085
 Conc: 31.68 ug/ml

Instrument :

FID_E

ClientSampleId :

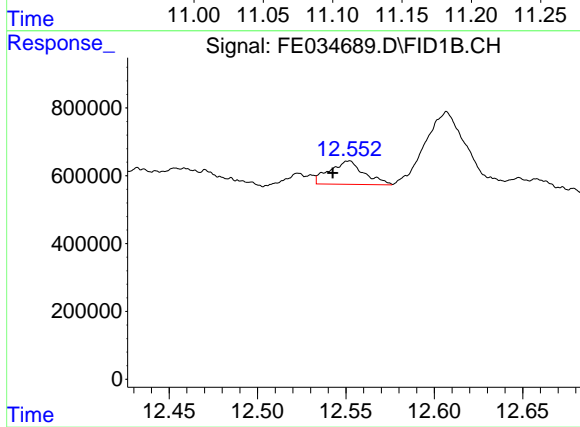
VNJ-236DL

Manual Integrations

APPROVED

Reviewed By :Yogesh Patel 01/10/2022

Supervised By :Ankita Jodhani 01/10/2022



#12 1-chlorooctadecane (SURR)

R.T.: 12.552 min
 Delta R.T.: 0.010 min
 Response: 921319
 Conc: 8.75 ug/ml m