

Data Path : Z:\pestpcbsrv\HPCHEM1\FID_E\Data\FE010725AL\
 Data File : FE051856.D
 Signal(s) : FID1B.ch
 Acq On : 07 Jan 2025 08:59
 Operator : YP\AJ
 Sample : Q1010-03DL 2X
 Misc :
 ALS Vial : 12 Sample Multiplier: 1

Instrument :
 FID_E
ClientSampleId :
 TR-04-010325-E2DL

Manual Integrations
APPROVED

Reviewed By :Yogesh Patel 01/08/2025
 Supervised By :Ankita Jodhani 01/08/2025

Integration File: autoint1.e
 Quant Time: Jan 08 00:14:12 2025
 Quant Method : Z:\pestpcbsrv\HPCHEM1\FID_E\methods\Aliphatic EPH 010225.M
 Quant Title : GC Extractables
 QLast Update : Fri Jan 03 04:14:12 2025
 Response via : Initial Calibration
 Integrator: ChemStation

Volume Inj. : 1 ul
 Signal Phase : Rxi-1ms
 Signal Info : 20M x 0.18mm x 0.18um

Compound	R.T.	Response	Conc Units
System Monitoring Compounds			
9) S ortho-Terphenyl (SURR)	12.125	2021239	13.944 ug/mlm
Spiked Amount	50.000	Recovery =	27.89%
12) S 1-chlorooctadecane (S...	13.554	2099482	18.271 ug/ml
Spiked Amount	50.000	Recovery =	36.54%

Target Compounds

(f)=RT Delta > 1/2 Window

(m)=manual int.

Data Path : Z:\pestpcbsrv\HPCHEM1\FID_E\Data\FE010725AL\
 Data File : FE051856.D
 Signal(s) : FID1B.ch
 Acq On : 07 Jan 2025 08:59
 Operator : YP\AJ
 Sample : Q1010-03DL 2X
 Misc :
 ALS Vial : 12 Sample Multiplier: 1

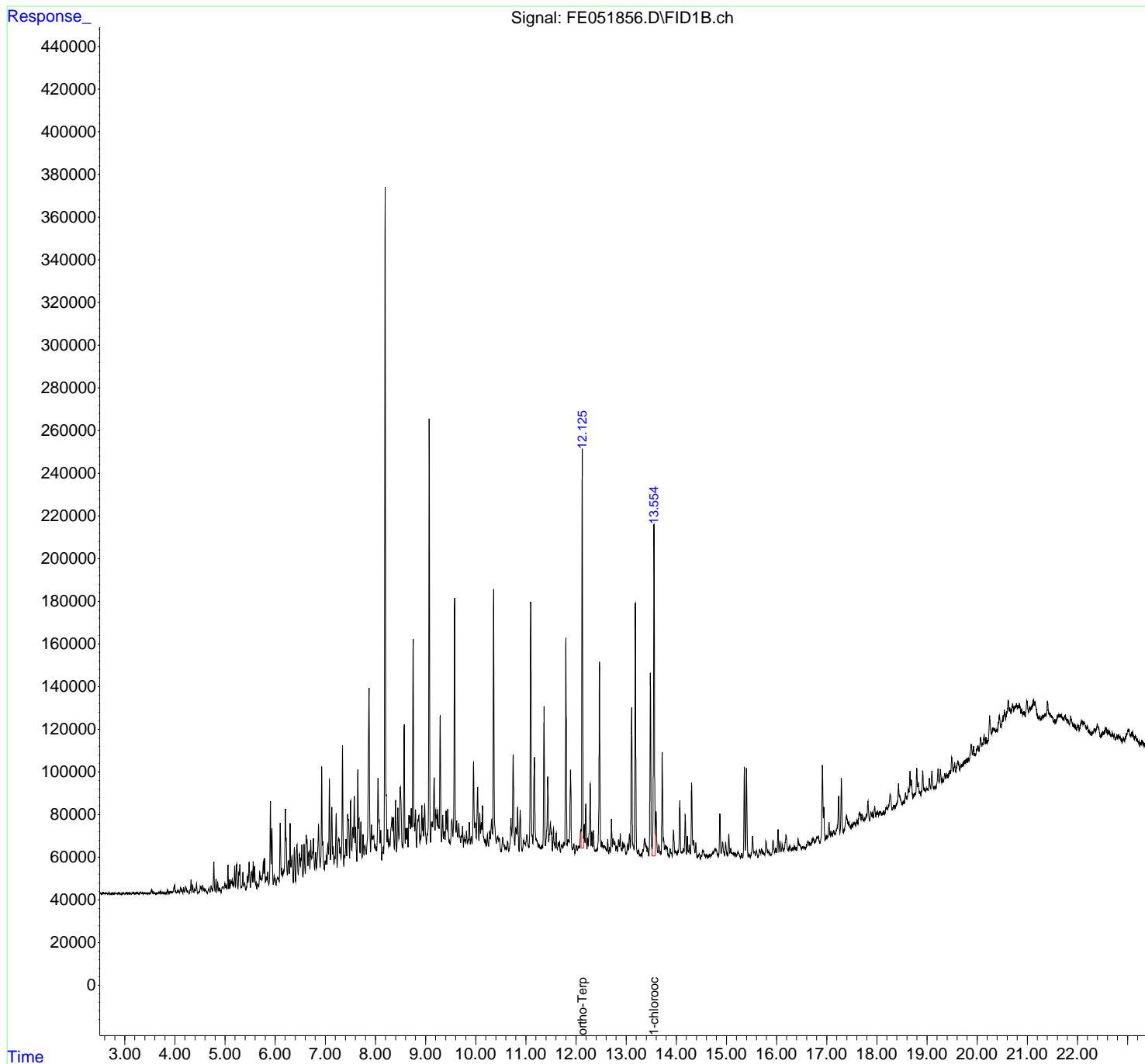
Instrument :
 FID_E
ClientSampleId :
 TR-04-010325-E2DL

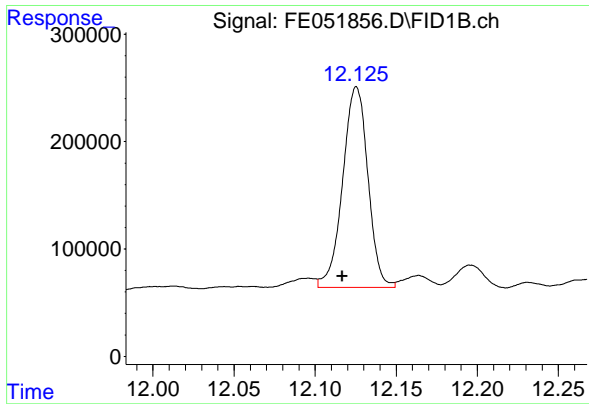
Manual Integrations
APPROVED

Reviewed By :Yogesh Patel 01/08/2025
 Supervised By :Ankita Jodhani 01/08/2025

Integration File: autoint1.e
 Quant Time: Jan 08 00:14:12 2025
 Quant Method : Z:\pestpcbsrv\HPCHEM1\FID_E\methods\Aliphatic EPH 010225.
 Quant Title : GC Extractables
 QLast Update : Fri Jan 03 04:14:12 2025
 Response via : Initial Calibration
 Integrator: ChemStation

Volume Inj. : 1 ul
 Signal Phase : Rxi-1ms
 Signal Info : 20M x 0.18mm x 0.18um





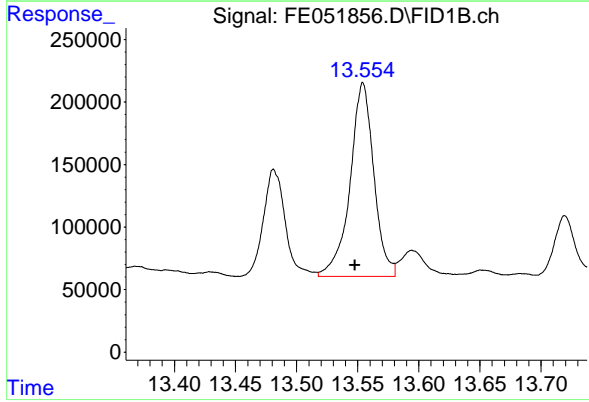
#9 ortho-Terphenyl (SURR)

R.T.: 12.125 min
 Delta R.T.: 0.008 min
 Response: 2021239
 Conc: 13.94 ug/ml

Instrument : FID_E
 Client Sample Id : TR-04-010325-E2DL

Manual Integrations
 APPROVED

Reviewed By :Yogesh Patel 01/08/2025
 Supervised By :Ankita Jodhani 01/08/2025



#12 1-chlorooctadecane (SURR)

R.T.: 13.554 min
 Delta R.T.: 0.006 min
 Response: 2099482
 Conc: 18.27 ug/ml