

Data Path : Z:\pestpcbsrv\HPCHEM1\FID_E\Data\FE010820\
 Data File : FE031075.D
 Signal(s) : FID1B.CH
 Acq On : 08 Jan 2020 21:35
 Operator : DD\AJ
 Sample : L1051-02 2X
 Misc :
 ALS Vial : 17 Sample Multiplier: 1

Instrument :
 FID_E
 ClientSampleId :
 SB-4G-(16-18)

Integration File: autoint1.e
 Quant Time: Jan 09 00:53:44 2020
 Quant Method : Z:\pestpcbsrv\HPCHEM1\FID_E\methods\FE010420.M
 Quant Title :
 QLast Update : Mon Jan 06 08:13:00 2020
 Response via : Initial Calibration
 Integrator: ChemStation 6890 Scale Mode: Large solvent peaks clipped

Volume Inj. : 1uL
 Signal Phase : Rxi-1ms
 Signal Info : 20mx0.18mmx0.18um

Compound	R.T.	Response	Conc Units

System Monitoring Compounds			
9) S TETRACOSANE-d50 (SURR...	14.620	3784241	11.341 ug/ml
Target Compounds			

(f)=RT Delta > 1/2 Window

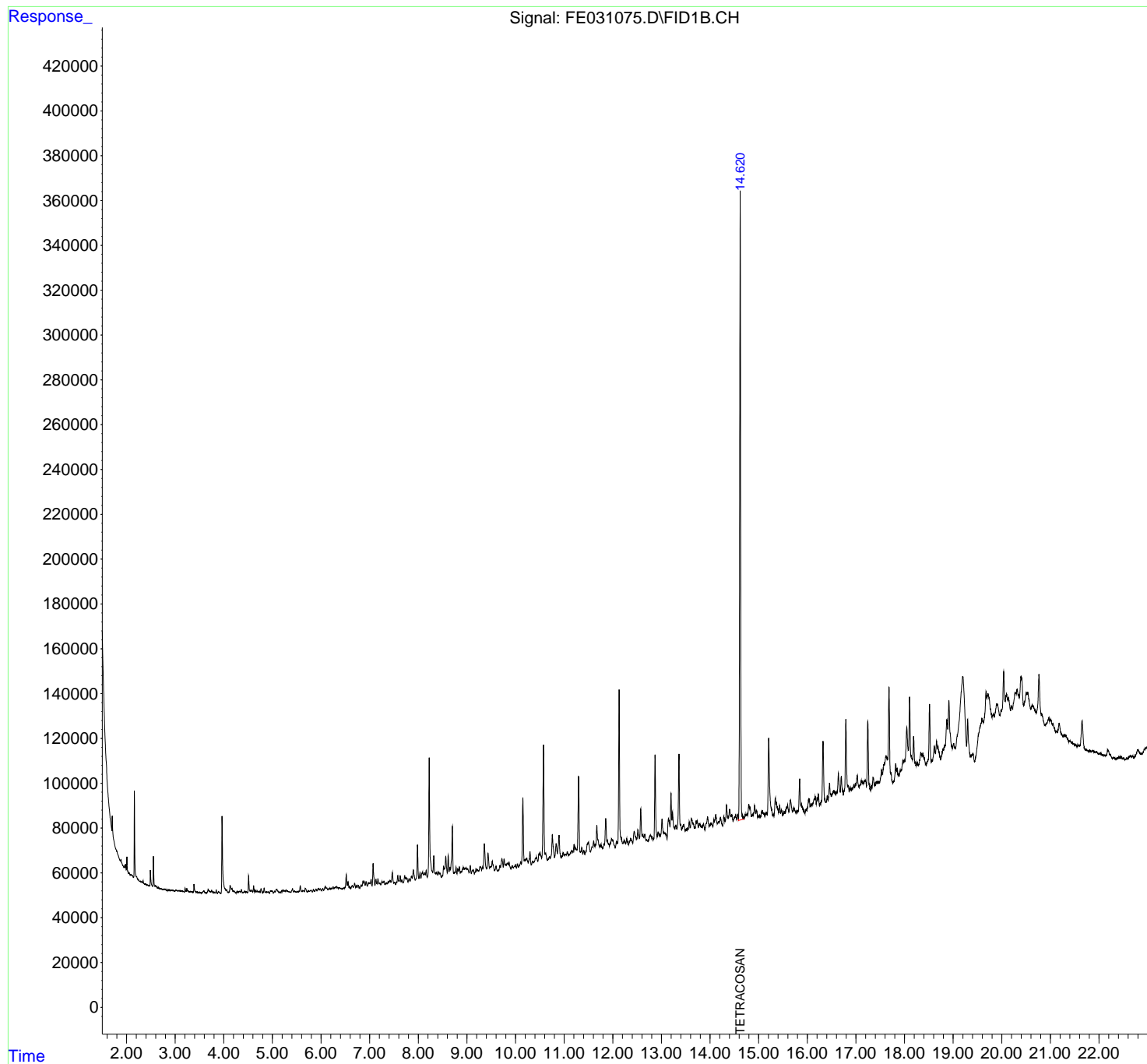
(m)=manual int.

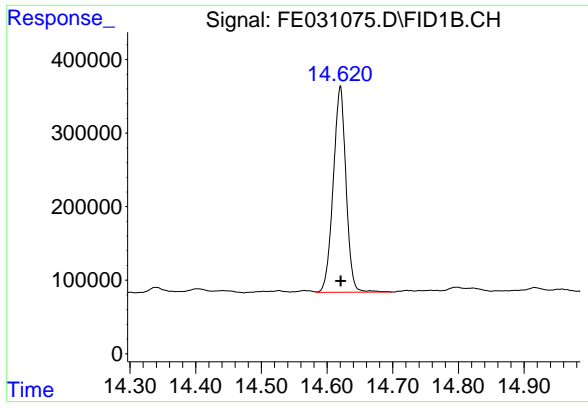
Data Path : Z:\pestpcbsrv\HPCHEM1\FID_E\Data\FE010820\
Data File : FE031075.D
Signal(s) : FID1B.CH
Acq On : 08 Jan 2020 21:35
Operator : DD\AJ
Sample : L1051-02 2X
Misc :
ALS Vial : 17 Sample Multiplier: 1

Instrument :
FID_E
ClientSampleId :
SB-4G-(16-18)

Integration File: autoint1.e
Quant Time: Jan 09 00:53:44 2020
Quant Method : Z:\pestpcbsrv\HPCHEM1\FID_E\methods\FE010420.M
Quant Title :
QLast Update : Mon Jan 06 08:13:00 2020
Response via : Initial Calibration
Integrator: ChemStation 6890 Scale Mode: Large solvent peaks clipped

Volume Inj. : 1uL
Signal Phase : Rxi-1ms
Signal Info : 20mx0.18mmx0.18um





#9 TETRACOSANE-d50 (SURROGATE)

R.T.: 14.620 min
Delta R.T.: 0.000 min
Response: 3784241
Conc: 11.34 ug/ml

Instrument :
FID_E
ClientSampleId :
SB-4G-(16-18)