

Data Path : Z:\pestpcbsrv\HPCHEM1\FID_E\Data\FE010825AL\
 Data File : FE051868.D
 Signal(s) : FID1B.ch
 Acq On : 08 Jan 2025 15:45
 Operator : YP\AJ
 Sample : Q1025-01MSD
 Misc :
 ALS Vial : 17 Sample Multiplier: 1

Instrument :
 FID_E
 ClientSampleId :

Integration File: autoint1.e
 Quant Time: Jan 08 22:58:44 2025
 Quant Method : Z:\pestpcbsrv\HPCHEM1\FID_E\methods\Aliphatic EPH 010225.M
 Quant Title : GC Extractables
 QLast Update : Fri Jan 03 04:14:12 2025
 Response via : Initial Calibration
 Integrator: ChemStation

Volume Inj. : 1 ul
 Signal Phase : Rxi-1ms
 Signal Info : 20M x 0.18mm x 0.18um

Compound	R.T.	Response	Conc Units

System Monitoring Compounds			
9) S ortho-Terphenyl (SURR)	12.127	4184513	28.869 ug/ml
Spiked Amount	50.000	Recovery	= 57.74%
12) S 1-chlorooctadecane (S...	13.555	3485710	30.334 ug/ml
Spiked Amount	50.000	Recovery	= 60.67%
Target Compounds			
1) T n-Nonane (C9)	3.537	3292812	29.812 ug/ml
2) T n-Decane (C10)	4.779	3877533	34.075 ug/ml
3) T A~Naphthalene (C11.7)	6.483	4966886	38.945 ug/ml
4) T n-Dodecane (C12)	6.931	4512039	38.422 ug/ml
5) T A~2-methylnaphthalene...	7.573	4877999	38.975 ug/ml
6) T n-Tetradecane (C14)	8.755	5026191	41.921 ug/ml
7) T n-Hexadecane (C16)	10.359	5305611	41.459 ug/ml
8) T n-Octadecane (C18)	11.801	5423808	40.760 ug/ml
10) T n-Eicosane (C20)	13.111	5677748	43.151 ug/ml
11) T n-Heneicosane (C21)	13.722	5389933	41.012 ug/ml
13) T n-Docosane (C22)	14.308	5281665	40.260 ug/ml
14) T n-Tetracosane (C24)	15.408	10656525	80.452 ug/ml
15) T n-Hexacosane (C26)	16.431	5040789	38.417 ug/ml
16) T n-Octacosane (C28)	17.379	4947116	38.315 ug/ml
17) T n-Tricontane (C30)	18.266	4887783	37.181 ug/ml
18) T n-Dotriacontane (C32)	19.098	4741849	37.365 ug/ml
19) T n-Tetratriacontane (C34)	19.879	4541619	40.875 ug/ml
20) T n-Hexatriacontane (C36)	20.616	4197030	42.541 ug/ml
21) T n-Octatriacontane (C38)	21.398	4183280	44.183 ug/ml
22) T n-Tetracontane (C40)	22.392	3958345	43.001 ug/ml

(f)=RT Delta > 1/2 Window

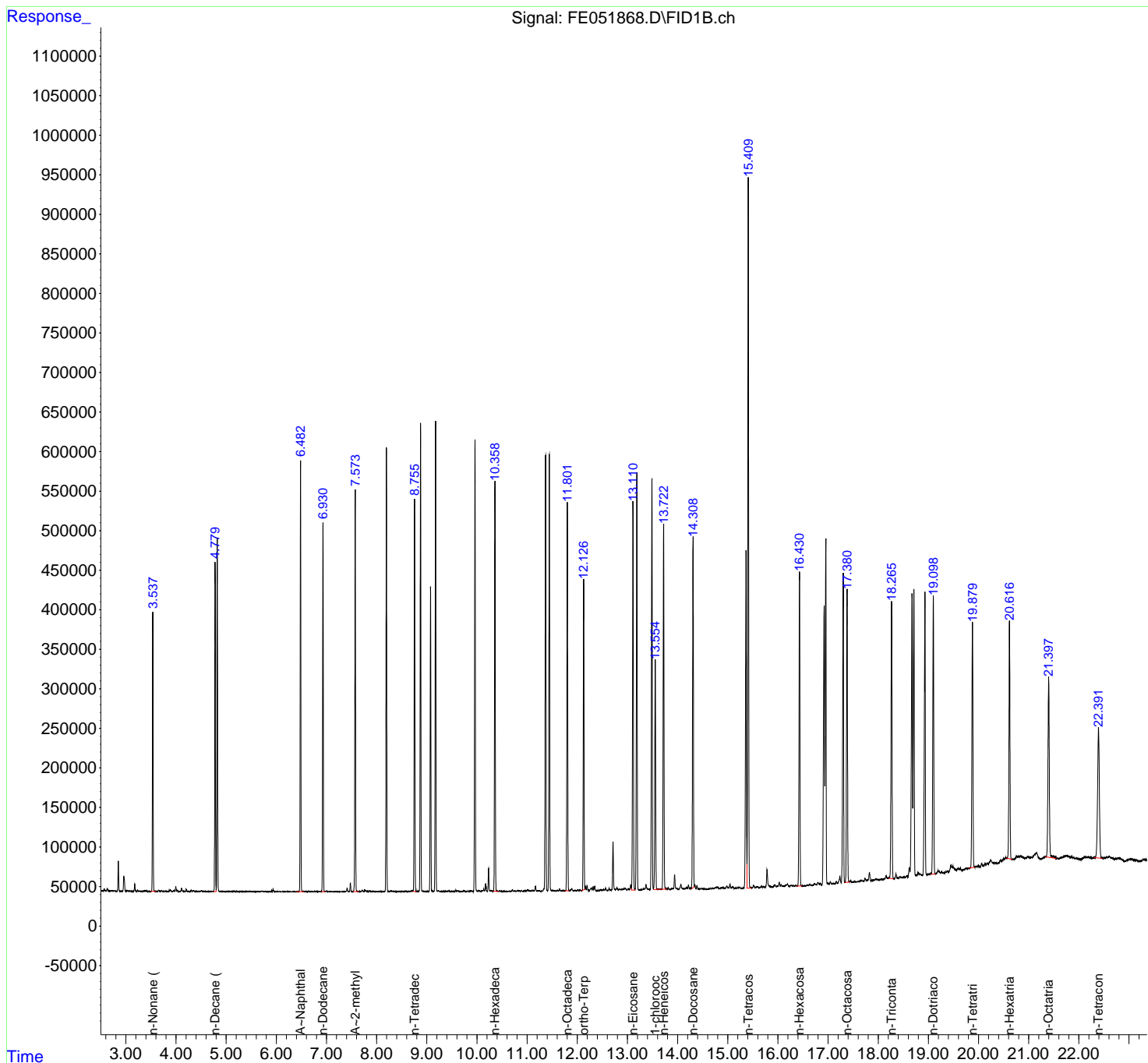
(m)=manual int.

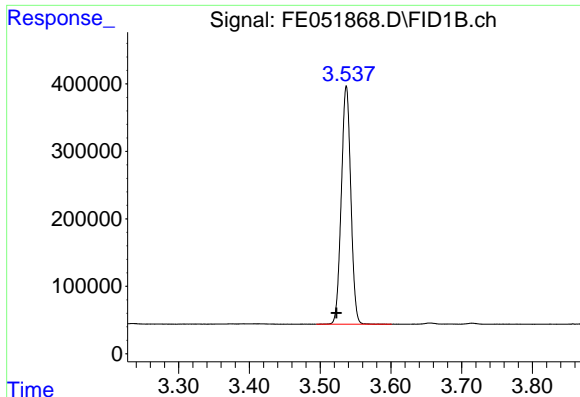
Data Path : Z:\pestpcbsrv\HPCHEM1\FID_E\Data\FE010825AL\
 Data File : FE051868.D
 Signal(s) : FID1B.ch
 Acq On : 08 Jan 2025 15:45
 Operator : YP\AJ
 Sample : Q1025-01MSD
 Misc :
 ALS Vial : 17 Sample Multiplier: 1

Instrument :
 FID_E
 ClientSampleId :

Integration File: autoint1.e
 Quant Time: Jan 08 22:58:44 2025
 Quant Method : Z:\pestpcbsrv\HPCHEM1\FID_E\methods\Aliphatic EPH 010225.M
 Quant Title : GC Extractables
 QLast Update : Fri Jan 03 04:14:12 2025
 Response via : Initial Calibration
 Integrator: ChemStation

Volume Inj. : 1 ul
 Signal Phase : Rxi-1ms
 Signal Info : 20M x 0.18mm x 0.18um

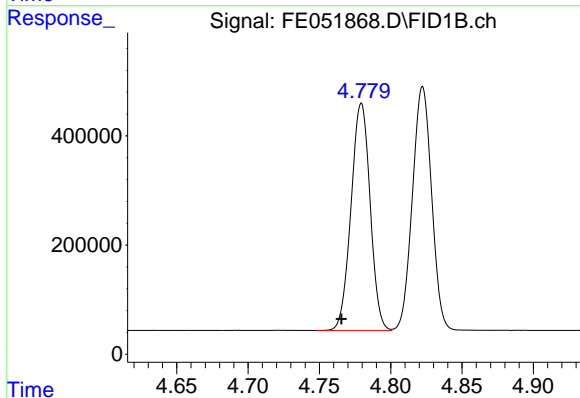




#1 n-Nonane (C9)

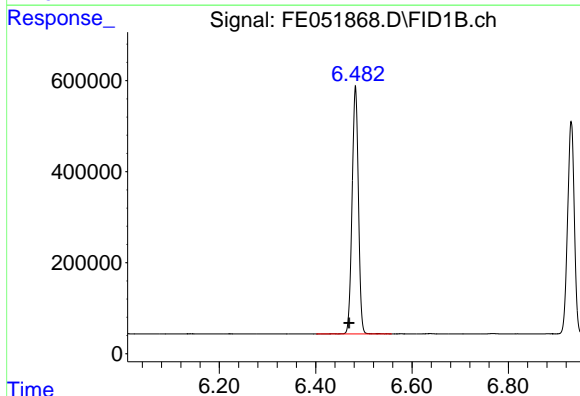
R.T.: 3.537 min
 Delta R.T.: 0.014 min
 Response: 3292812
 Conc: 29.81 ug/ml

Instrument :
 FID_E
 ClientSampleId :



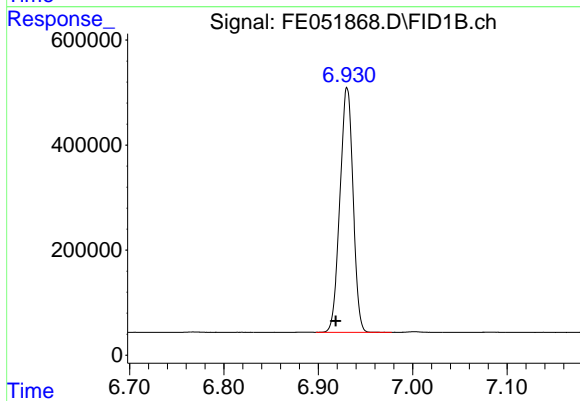
#2 n-Decane (C10)

R.T.: 4.779 min
 Delta R.T.: 0.014 min
 Response: 3877533
 Conc: 34.08 ug/ml



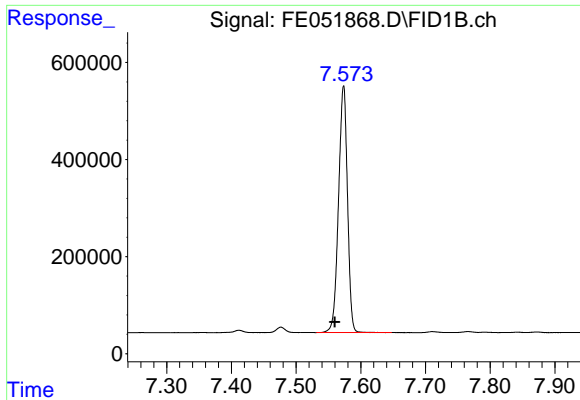
#3 A~Naphthalene (C11.7)

R.T.: 6.483 min
 Delta R.T.: 0.013 min
 Response: 4966886
 Conc: 38.94 ug/ml



#4 n-Dodecane (C12)

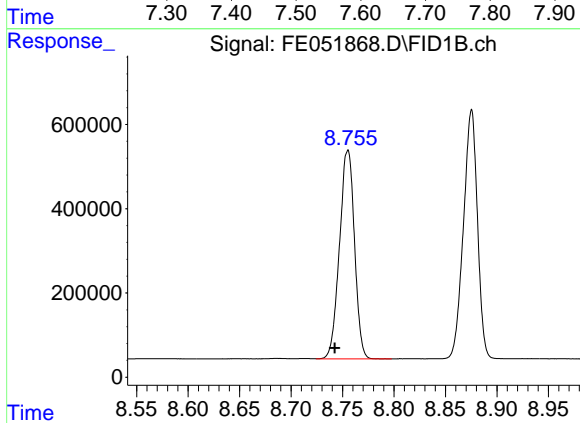
R.T.: 6.931 min
 Delta R.T.: 0.012 min
 Response: 4512039
 Conc: 38.42 ug/ml



#5 A~2-methylnaphthalene (C12.89)

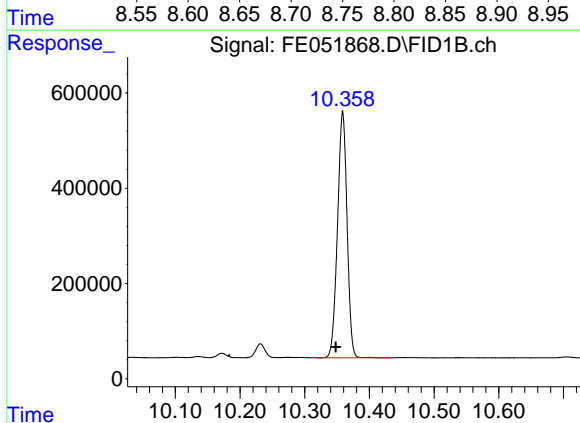
R.T.: 7.573 min
Delta R.T.: 0.014 min
Response: 4877999
Conc: 38.98 ug/ml

Instrument :
FID_E
ClientSampleId :



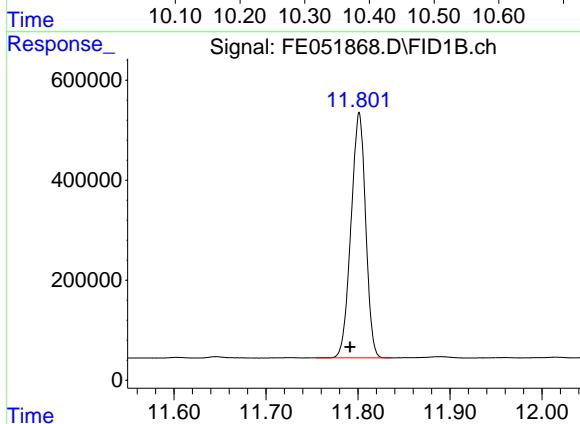
#6 n-Tetradecane (C14)

R.T.: 8.755 min
Delta R.T.: 0.013 min
Response: 5026191
Conc: 41.92 ug/ml



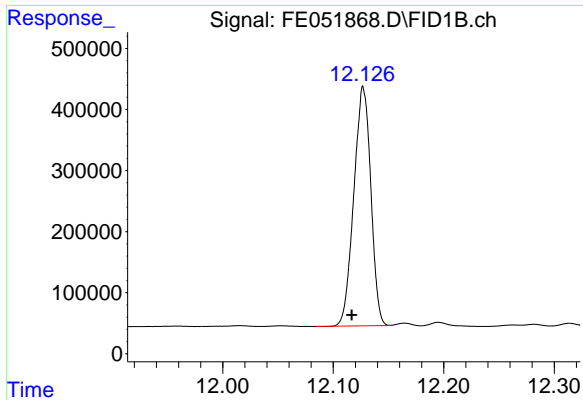
#7 n-Hexadecane (C16)

R.T.: 10.359 min
Delta R.T.: 0.011 min
Response: 5305611
Conc: 41.46 ug/ml



#8 n-Octadecane (C18)

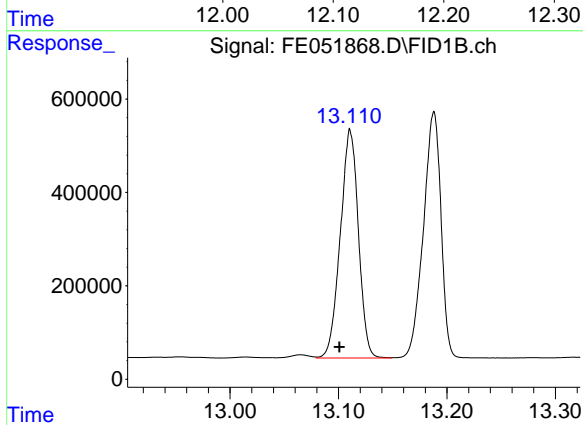
R.T.: 11.801 min
Delta R.T.: 0.010 min
Response: 5423808
Conc: 40.76 ug/ml



#9 ortho-Terphenyl (SURR)

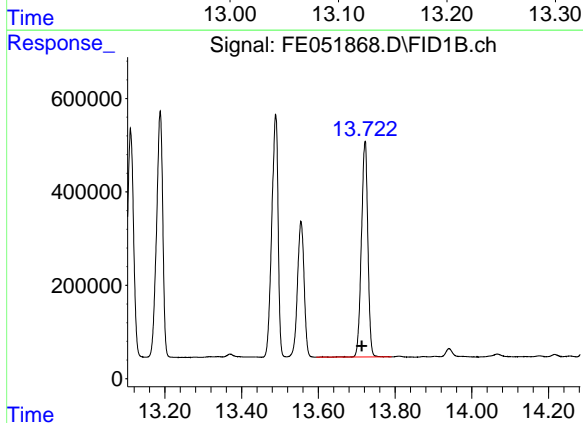
R.T.: 12.127 min
 Delta R.T.: 0.010 min
 Response: 4184513
 Conc: 28.87 ug/ml

Instrument :
 FID_E
 ClientSampleId :



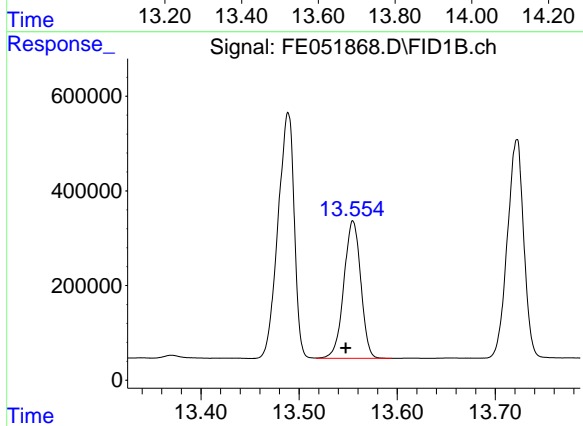
#10 n-Eicosane (C20)

R.T.: 13.111 min
 Delta R.T.: 0.010 min
 Response: 5677748
 Conc: 43.15 ug/ml



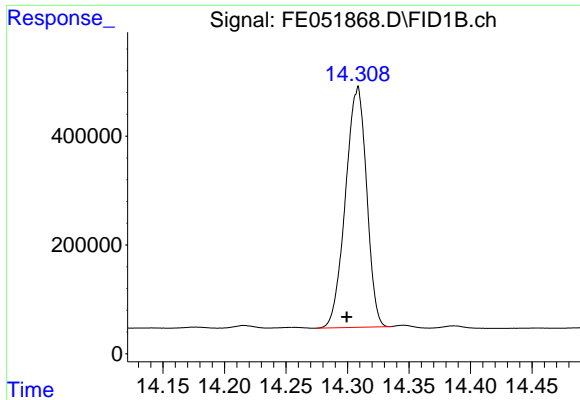
#11 n-Heneicosane (C21)

R.T.: 13.722 min
 Delta R.T.: 0.008 min
 Response: 5389933
 Conc: 41.01 ug/ml



#12 1-chlorooctadecane (SURR)

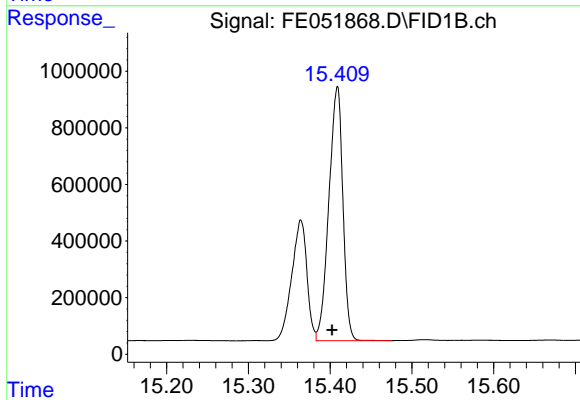
R.T.: 13.555 min
 Delta R.T.: 0.007 min
 Response: 3485710
 Conc: 30.33 ug/ml



#13 n-Docosane (C22)

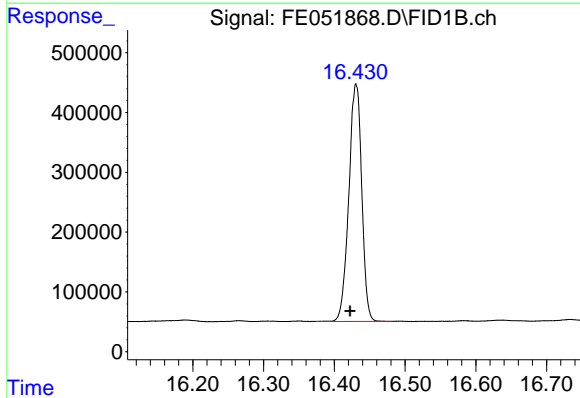
R.T.: 14.308 min
 Delta R.T.: 0.008 min
 Response: 5281665
 Conc: 40.26 ug/ml

Instrument :
 FID_E
 ClientSampleId :



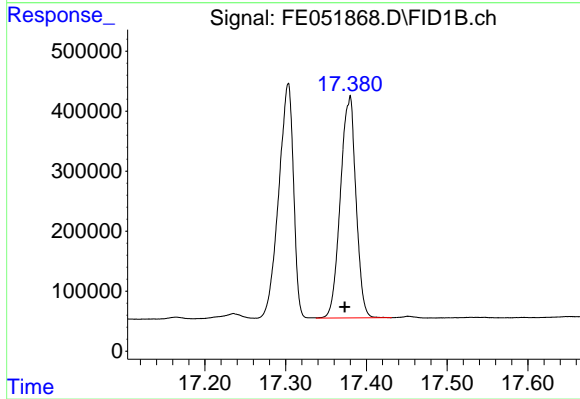
#14 n-Tetracosane (C24)

R.T.: 15.408 min
 Delta R.T.: 0.006 min
 Response: 10656525
 Conc: 80.45 ug/ml



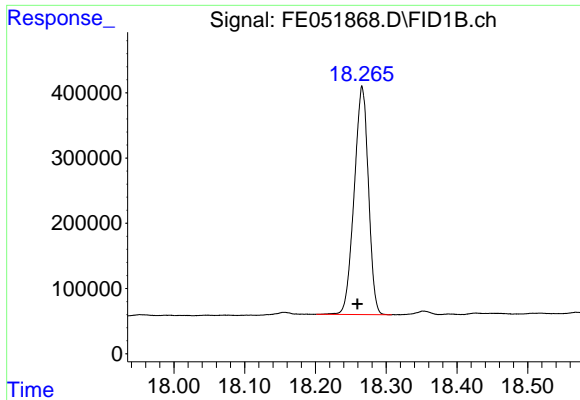
#15 n-Hexacosane (C26)

R.T.: 16.431 min
 Delta R.T.: 0.008 min
 Response: 5040789
 Conc: 38.42 ug/ml



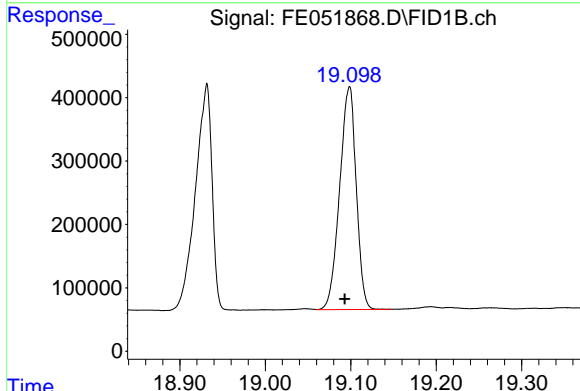
#16 n-Octacosane (C28)

R.T.: 17.379 min
 Delta R.T.: 0.006 min
 Response: 4947116
 Conc: 38.32 ug/ml

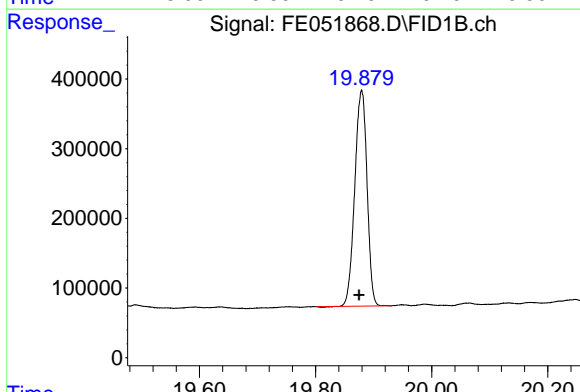


#17 n-Tricontane (C30)
 R.T.: 18.266 min
 Delta R.T.: 0.006 min
 Response: 4887783
 Conc: 37.18 ug/ml

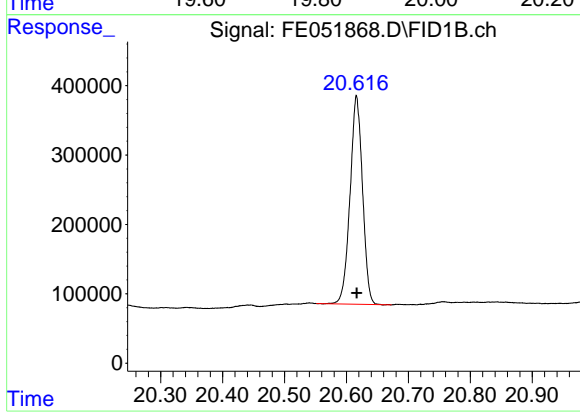
Instrument :
 FID_E
 ClientSampleId :



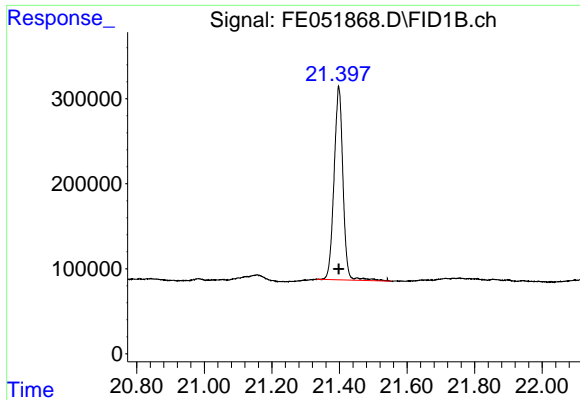
#18 n-Dotriacontane (C32)
 R.T.: 19.098 min
 Delta R.T.: 0.005 min
 Response: 4741849
 Conc: 37.36 ug/ml



#19 n-Tetratriacontane (C34)
 R.T.: 19.879 min
 Delta R.T.: 0.004 min
 Response: 4541619
 Conc: 40.88 ug/ml



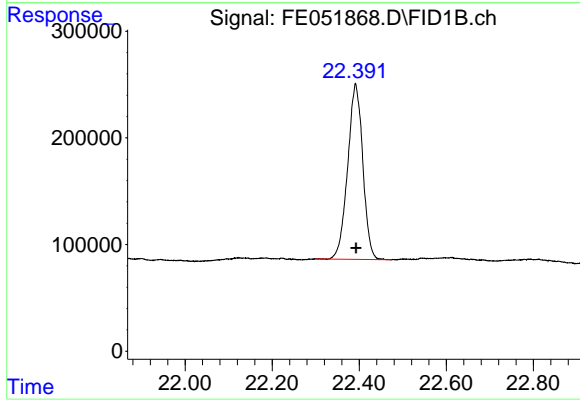
#20 n-Hexatriacontane (C36)
 R.T.: 20.616 min
 Delta R.T.: 0.000 min
 Response: 4197030
 Conc: 42.54 ug/ml



#21 n-Octatriacontane (C38)

R.T.: 21.398 min
Delta R.T.: 0.000 min
Response: 4183280
Conc: 44.18 ug/ml

Instrument :
FID_E
ClientSampleId :



#22 n-Tetracontane (C40)

R.T.: 22.392 min
Delta R.T.: 0.000 min
Response: 3958345
Conc: 43.00 ug/ml