

Data Path : Z:\pestpcbsrv\HPCHEM1\FID_E\Data\FE010825AL\
 Data File : FE051863.D
 Signal(s) : FID1B.ch
 Acq On : 08 Jan 2025 13:15
 Operator : YP\AJ
 Sample : PB165974BS
 Misc :
 ALS Vial : 12 Sample Multiplier: 1

Instrument :
 FID_E
 ClientSampleId :
 PB165974BS

Integration File: autoint1.e
 Quant Time: Jan 08 22:56:45 2025
 Quant Method : Z:\pestpcbsrv\HPCHEM1\FID_E\methods\Aliphatic EPH 010225.M
 Quant Title : GC Extractables
 QLast Update : Fri Jan 03 04:14:12 2025
 Response via : Initial Calibration
 Integrator: ChemStation

Volume Inj. : 1 ul
 Signal Phase : Rxi-1ms
 Signal Info : 20M x 0.18mm x 0.18um

Compound	R.T.	Response	Conc Units

System Monitoring Compounds			
9) S ortho-Terphenyl (SURR)	12.122	5745023	39.635 ug/ml
Spiked Amount	50.000	Recovery =	79.27%
12) S 1-chlorooctadecane (S...	13.551	4821368	41.958 ug/ml
Spiked Amount	50.000	Recovery =	83.92%
Target Compounds			
1) T n-Nonane (C9)	3.535	4391429	39.758 ug/ml
2) T n-Decane (C10)	4.775	4789464	42.089 ug/ml
3) T A~Naphthalene (C11.7)	6.478	5744093	45.039 ug/ml
4) T n-Dodecane (C12)	6.926	5113089	43.540 ug/ml
5) T A~2-methylnaphthalene...	7.568	5396159	43.115 ug/ml
6) T n-Tetradecane (C14)	8.750	5336123	44.506 ug/ml
7) T n-Hexadecane (C16)	10.354	5439998	42.509 ug/ml
8) T n-Octadecane (C18)	11.797	5525583	41.525 ug/ml
10) T n-Eicosane (C20)	13.106	5713493	43.423 ug/ml
11) T n-Heneicosane (C21)	13.717	5490304	41.776 ug/ml
13) T n-Docosane (C22)	14.303	5449320	41.538 ug/ml
14) T n-Tetracosane (C24)	15.403	11025412	83.237 ug/ml
15) T n-Hexacosane (C26)	16.426	5231124	39.868 ug/ml
16) T n-Octacosane (C28)	17.373	5143462	39.836 ug/ml
17) T n-Tricontane (C30)	18.262	5079990	38.643 ug/ml
18) T n-Dotriacontane (C32)	19.092	4999047	39.391 ug/ml
19) T n-Tetratriacontane (C34)	19.874	5153667	46.384 ug/ml
20) T n-Hexatriacontane (C36)	20.613	5306690	53.789 ug/ml
21) T n-Octatriacontane (C38)	21.397	5953614	62.882 ug/ml
22) T n-Tetracontane (C40)	22.393	6790915	73.772 ug/ml

(f)=RT Delta > 1/2 Window

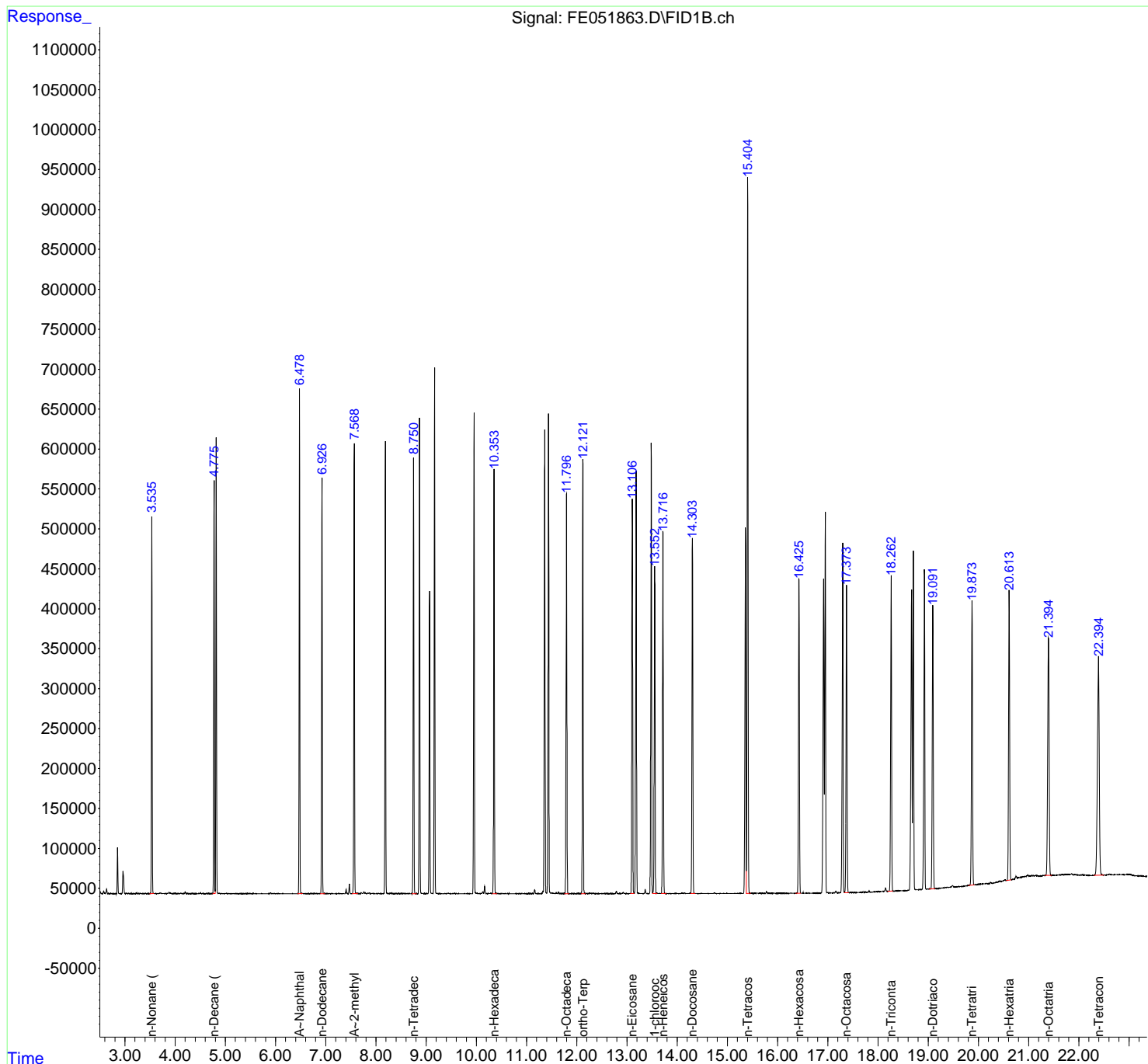
(m)=manual int.

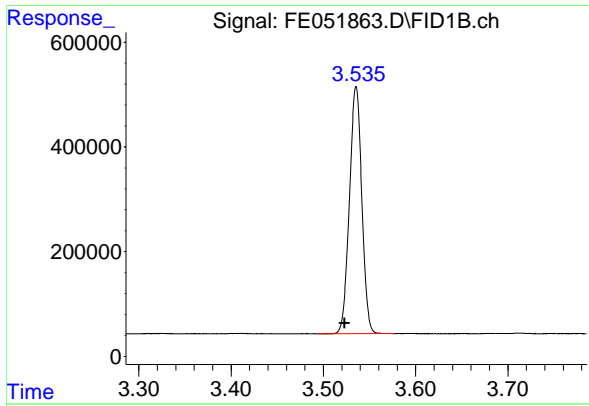
Data Path : Z:\pestpcbsrv\HPCHEM1\FID_E\Data\FE010825AL\
 Data File : FE051863.D
 Signal(s) : FID1B.ch
 Acq On : 08 Jan 2025 13:15
 Operator : YP\AJ
 Sample : PB165974BS
 Misc :
 ALS Vial : 12 Sample Multiplier: 1

Instrument :
 FID_E
 ClientSampleId :
 PB165974BS

Integration File: autoint1.e
 Quant Time: Jan 08 22:56:45 2025
 Quant Method : Z:\pestpcbsrv\HPCHEM1\FID_E\methods\Aliphatic EPH 010225.M
 Quant Title : GC Extractables
 QLast Update : Fri Jan 03 04:14:12 2025
 Response via : Initial Calibration
 Integrator: ChemStation

Volume Inj. : 1 ul
 Signal Phase : Rxi-1ms
 Signal Info : 20M x 0.18mm x 0.18um

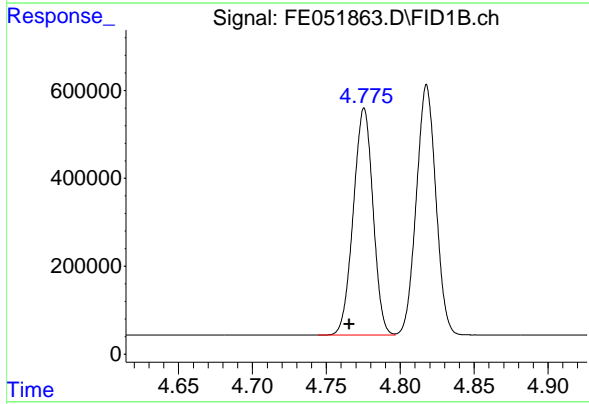




#1 n-Nonane (C9)

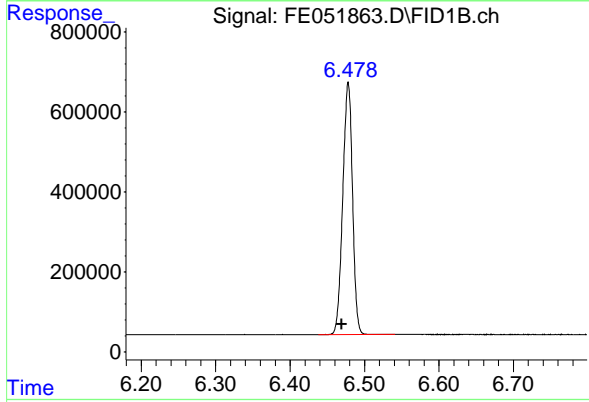
R.T.: 3.535 min
Delta R.T.: 0.012 min
Response: 4391429
Conc: 39.76 ug/ml

Instrument : FID_E
ClientSampleId : PB165974BS



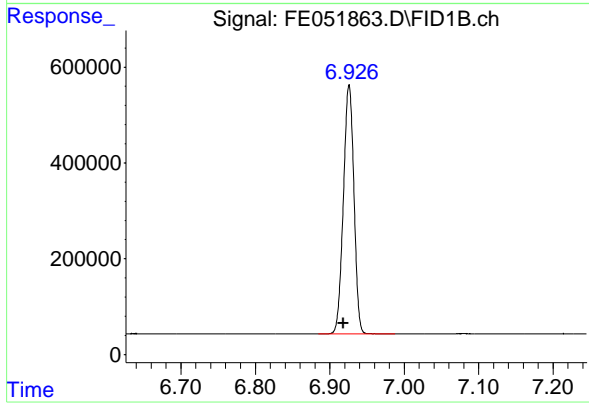
#2 n-Decane (C10)

R.T.: 4.775 min
Delta R.T.: 0.010 min
Response: 4789464
Conc: 42.09 ug/ml



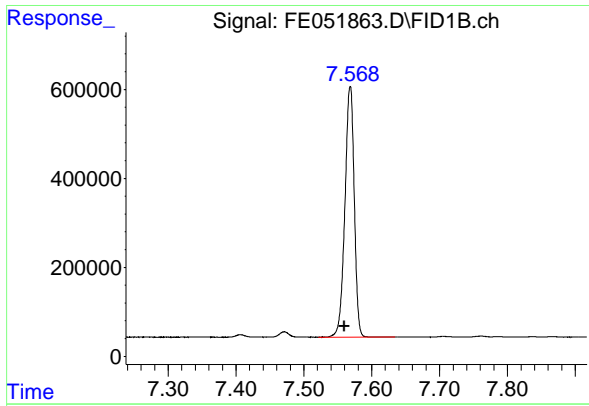
#3 A~Naphthalene (C11.7)

R.T.: 6.478 min
Delta R.T.: 0.009 min
Response: 5744093
Conc: 45.04 ug/ml



#4 n-Dodecane (C12)

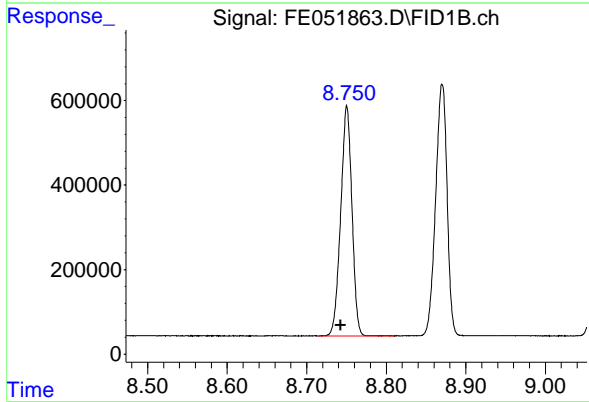
R.T.: 6.926 min
Delta R.T.: 0.008 min
Response: 5113089
Conc: 43.54 ug/ml



#5 A~2-methylnaphthalene (C12.89)

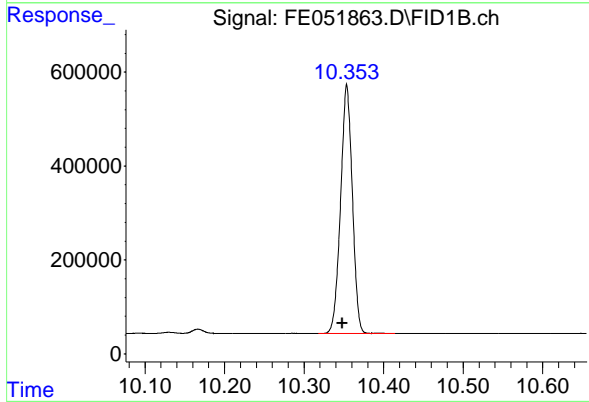
R.T.: 7.568 min
 Delta R.T.: 0.008 min
 Response: 5396159
 Conc: 43.12 ug/ml

Instrument :
 FID_E
 ClientSampleId :
 PB165974BS



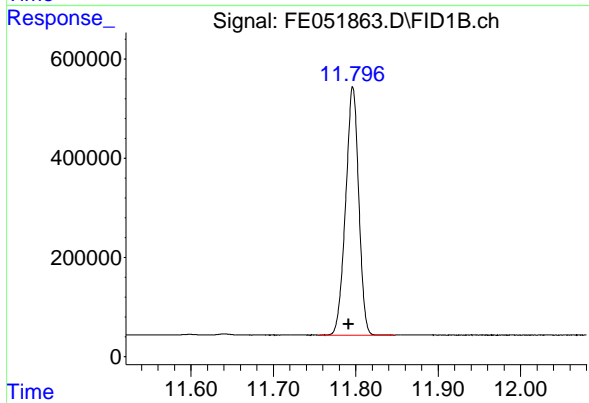
#6 n-Tetradecane (C14)

R.T.: 8.750 min
 Delta R.T.: 0.008 min
 Response: 5336123
 Conc: 44.51 ug/ml



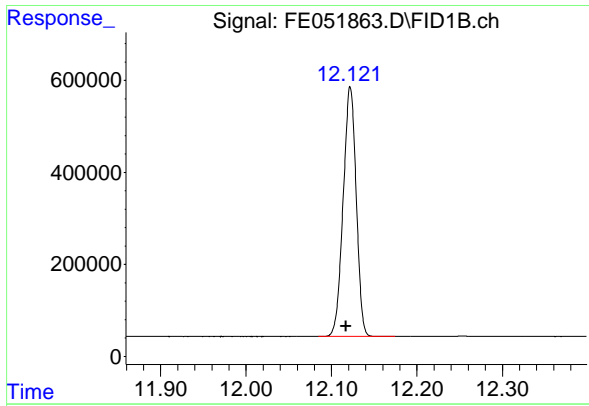
#7 n-Hexadecane (C16)

R.T.: 10.354 min
 Delta R.T.: 0.006 min
 Response: 5439998
 Conc: 42.51 ug/ml



#8 n-Octadecane (C18)

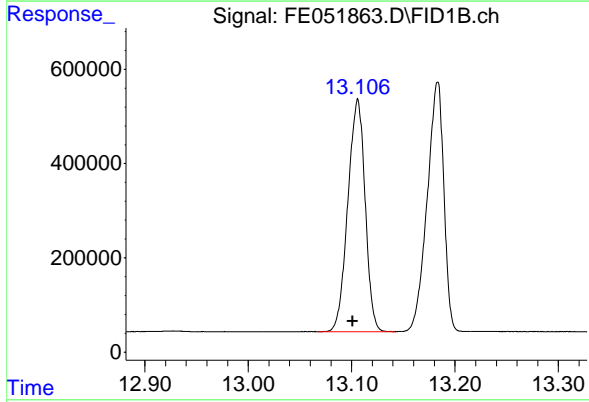
R.T.: 11.797 min
 Delta R.T.: 0.005 min
 Response: 5525583
 Conc: 41.53 ug/ml



#9 ortho-Terphenyl (SURR)

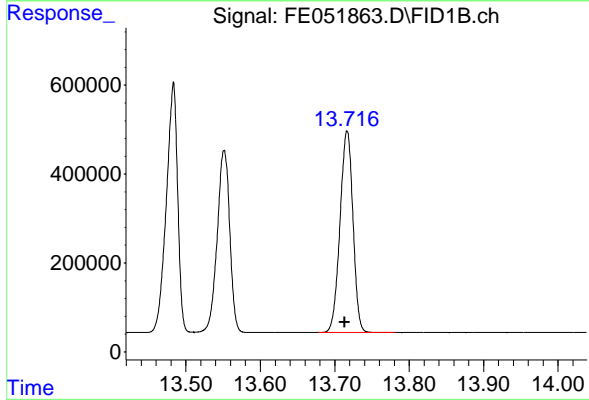
R.T.: 12.122 min
 Delta R.T.: 0.005 min
 Response: 5745023
 Conc: 39.63 ug/ml

Instrument :
 FID_E
 ClientSampleId :
 PB165974BS



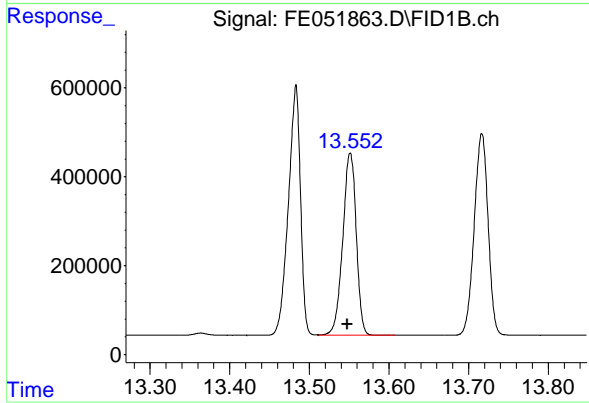
#10 n-Eicosane (C20)

R.T.: 13.106 min
 Delta R.T.: 0.005 min
 Response: 5713493
 Conc: 43.42 ug/ml



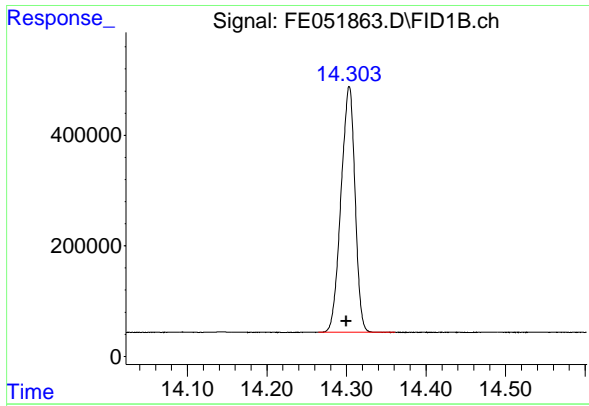
#11 n-Heneicosane (C21)

R.T.: 13.717 min
 Delta R.T.: 0.003 min
 Response: 5490304
 Conc: 41.78 ug/ml



#12 1-chlorooctadecane (SURR)

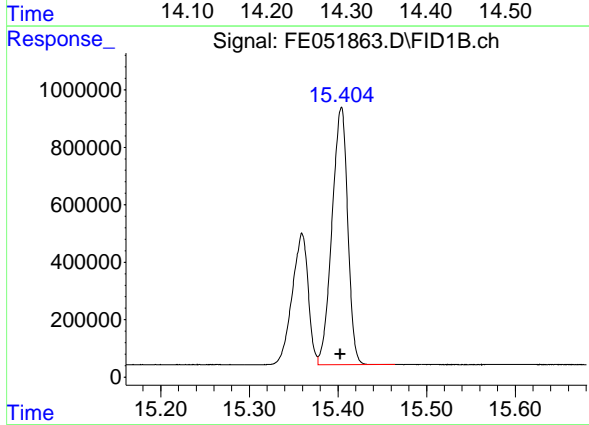
R.T.: 13.551 min
 Delta R.T.: 0.004 min
 Response: 4821368
 Conc: 41.96 ug/ml



#13 n-Docosane (C22)

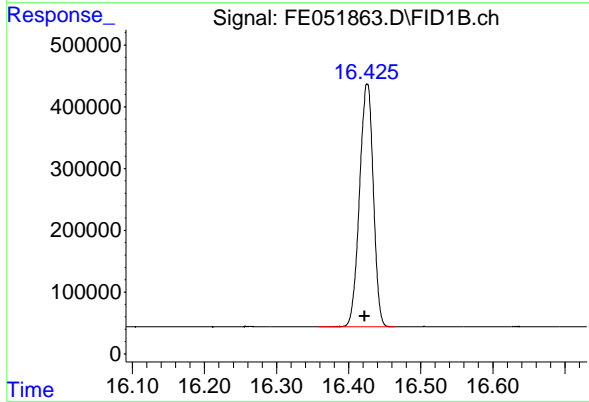
R.T.: 14.303 min
 Delta R.T.: 0.004 min
 Response: 5449320
 Conc: 41.54 ug/ml

Instrument :
 FID_E
 ClientSampleId :
 PB165974BS



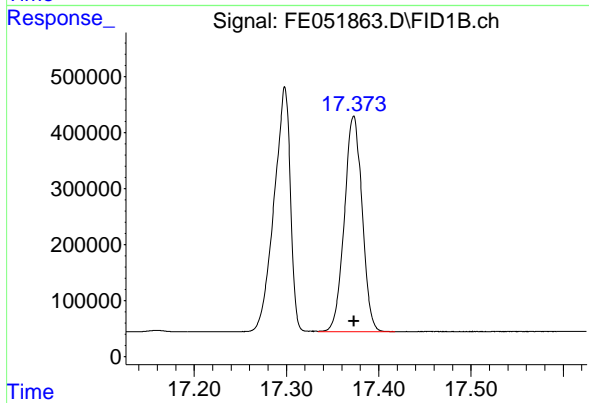
#14 n-Tetracosane (C24)

R.T.: 15.403 min
 Delta R.T.: 0.001 min
 Response: 11025412
 Conc: 83.24 ug/ml



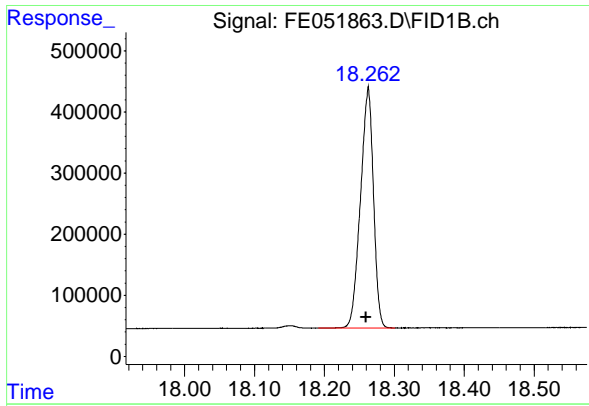
#15 n-Hexacosane (C26)

R.T.: 16.426 min
 Delta R.T.: 0.003 min
 Response: 5231124
 Conc: 39.87 ug/ml



#16 n-Octacosane (C28)

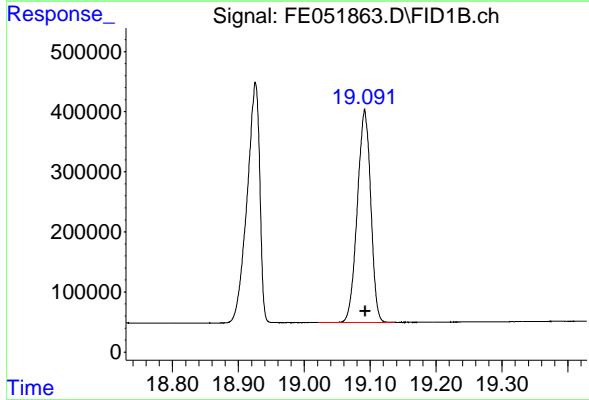
R.T.: 17.373 min
 Delta R.T.: 0.000 min
 Response: 5143462
 Conc: 39.84 ug/ml



#17 n-Tricontane (C30)

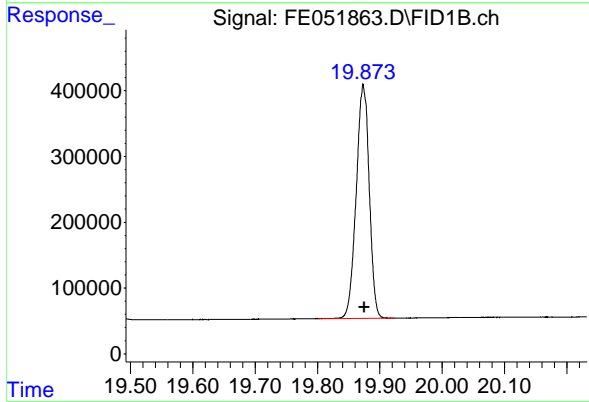
R.T.: 18.262 min
 Delta R.T.: 0.003 min
 Response: 5079990
 Conc: 38.64 ug/ml

Instrument :
 FID_E
 ClientSampleId :
 PB165974BS



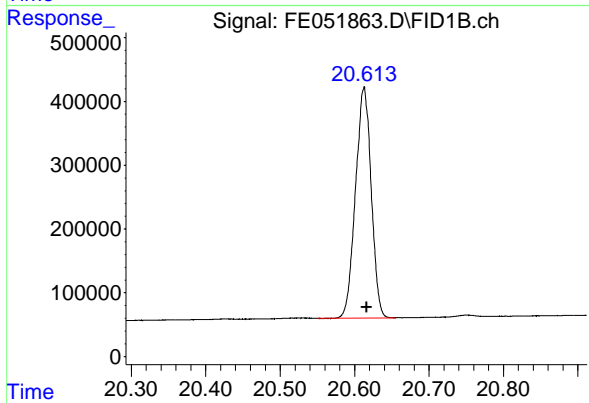
#18 n-Dotriacontane (C32)

R.T.: 19.092 min
 Delta R.T.: -0.001 min
 Response: 4999047
 Conc: 39.39 ug/ml



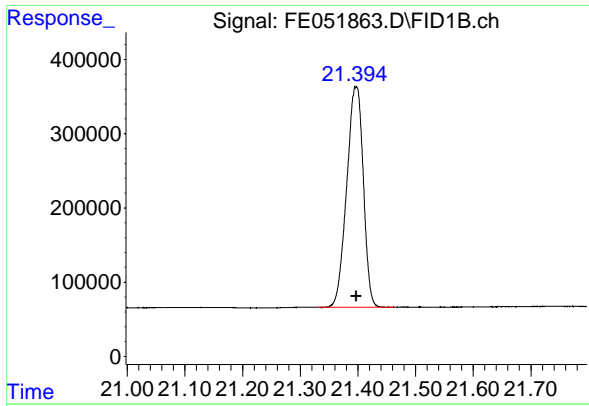
#19 n-Tetracontane (C34)

R.T.: 19.874 min
 Delta R.T.: -0.002 min
 Response: 5153667
 Conc: 46.38 ug/ml



#20 n-Hexatriacontane (C36)

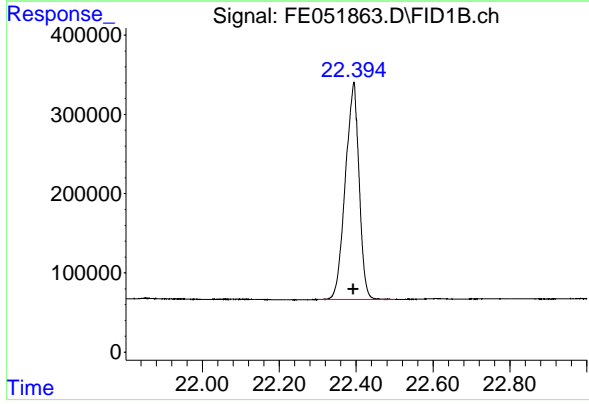
R.T.: 20.613 min
 Delta R.T.: -0.004 min
 Response: 5306690
 Conc: 53.79 ug/ml



#21 n-Octatriacontane (C38)

R.T.: 21.397 min
Delta R.T.: -0.001 min
Response: 5953614
Conc: 62.88 ug/ml

Instrument :
FID_E
ClientSampleId :
PB165974BS



#22 n-Tetracontane (C40)

R.T.: 22.393 min
Delta R.T.: 0.001 min
Response: 6790915
Conc: 73.77 ug/ml