

Data Path : Z:\pestpcbsrv\HPCHEM1\FID_E\Data\FE010825AL\
 Data File : FE051871.D
 Signal(s) : FID1B.ch
 Acq On : 08 Jan 2025 17:16
 Operator : YP\AJ
 Sample : Q1027-02
 Misc :
 ALS Vial : 20 Sample Multiplier: 1

Instrument :
 FID_E
 ClientSampleId :
 EO-03-010725-E2

Integration File: autoint1.e
 Quant Time: Jan 09 02:47:49 2025
 Quant Method : Z:\pestpcbsrv\HPCHEM1\FID_E\methods\Aliphatic EPH 010225.M
 Quant Title : GC Extractables
 QLast Update : Fri Jan 03 04:14:12 2025
 Response via : Initial Calibration
 Integrator: ChemStation

Volume Inj. : 1 ul
 Signal Phase : Rxi-1ms
 Signal Info : 20M x 0.18mm x 0.18um

Compound	R.T.	Response	Conc Units

System Monitoring Compounds			
9) S ortho-Terphenyl (SURR)	12.140	3356068	23.153 ug/ml
Spiked Amount	50.000	Recovery	= 46.31%
12) S 1-chlorooctadecane (S...	13.576	49588487	431.543 ug/ml
Spiked Amount	50.000	Recovery	= 863.09%

Target Compounds

(f)=RT Delta > 1/2 Window

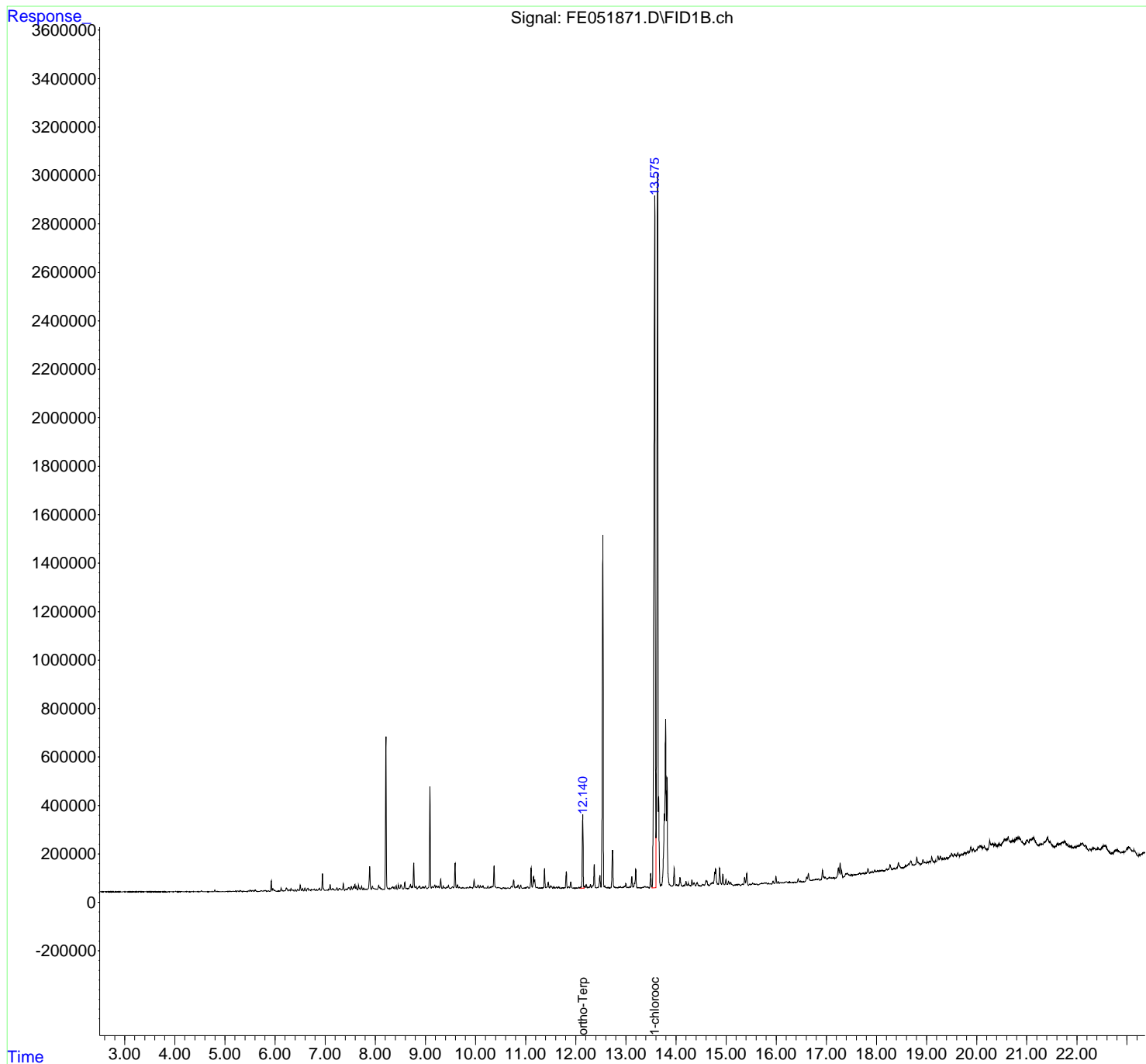
(m)=manual int.

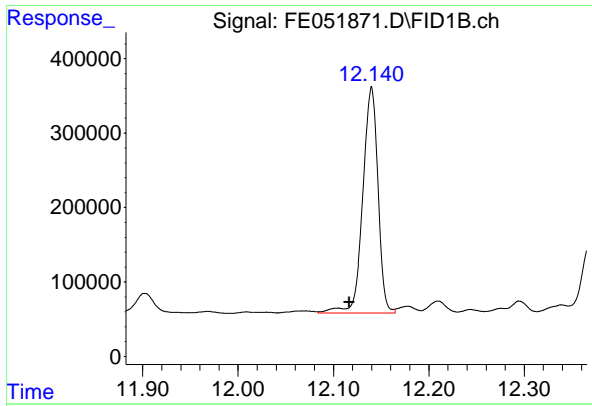
Data Path : Z:\pestpcbsrv\HPCHEM1\FID_E\Data\FE010825AL\
 Data File : FE051871.D
 Signal(s) : FID1B.ch
 Acq On : 08 Jan 2025 17:16
 Operator : YP\AJ
 Sample : Q1027-02
 Misc :
 ALS Vial : 20 Sample Multiplier: 1

Instrument :
 FID_E
 ClientSampleId :
 EO-03-010725-E2

Integration File: autoint1.e
 Quant Time: Jan 09 02:47:49 2025
 Quant Method : Z:\pestpcbsrv\HPCHEM1\FID_E\methods\Aliphatic EPH 010225.M
 Quant Title : GC Extractables
 QLast Update : Fri Jan 03 04:14:12 2025
 Response via : Initial Calibration
 Integrator: ChemStation

Volume Inj. : 1 ul
 Signal Phase : Rxi-1ms
 Signal Info : 20M x 0.18mm x 0.18um

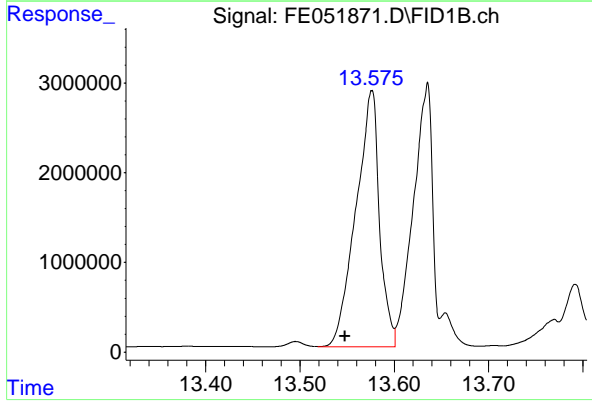




#9 ortho-Terphenyl (SURRE)

R.T.: 12.140 min
Delta R.T.: 0.023 min
Response: 3356068
Conc: 23.15 ug/ml

Instrument :
FID_E
ClientSampleId :
EO-03-010725-E2



#12 1-chlorooctadecane (SURRE)

R.T.: 13.576 min
Delta R.T.: 0.028 min
Response: 49588487
Conc: 431.54 ug/ml