

Data Path : Z:\pestpcbsrv\HPCHEM1\FID\_E\Data\FE010924AL\  
 Data File : FE046131.D  
 Signal(s) : FID1B.ch  
 Acq On : 09 Jan 2024 20:43  
 Operator : YP\AJ  
 Sample : P1070-02  
 Misc :  
 ALS Vial : 25 Sample Multiplier: 1

Instrument :  
 FID\_E  
 ClientSampleId :  
 HD-01-010824-E2

Integration File: autoint1.e  
 Quant Time: Jan 10 02:40:33 2024  
 Quant Method : Z:\pestpcbsrv\HPCHEM1\FID\_E\methods\Aliphatic EPH 122923.M  
 Quant Title : GC Extractables  
 QLast Update : Fri Dec 29 03:49:54 2023  
 Response via : Initial Calibration  
 Integrator: ChemStation

Volume Inj. : 1 ul  
 Signal Phase : Rxi-1ms  
 Signal Info : 20M x 0.18mm x 0.18um

Compound	R.T.	Response	Conc Units
-----			
System Monitoring Compounds			
9) S ortho-Terphenyl (SURR)	11.842	4906862	27.002 ug/ml
Spiked Amount	50.000	Recovery	= 54.00%
12) S 1-chlorooctadecane (S...	13.287	35725676	267.387 ug/ml
Spiked Amount	50.000	Recovery	= 534.77%

Target Compounds

-----

(f)=RT Delta > 1/2 Window

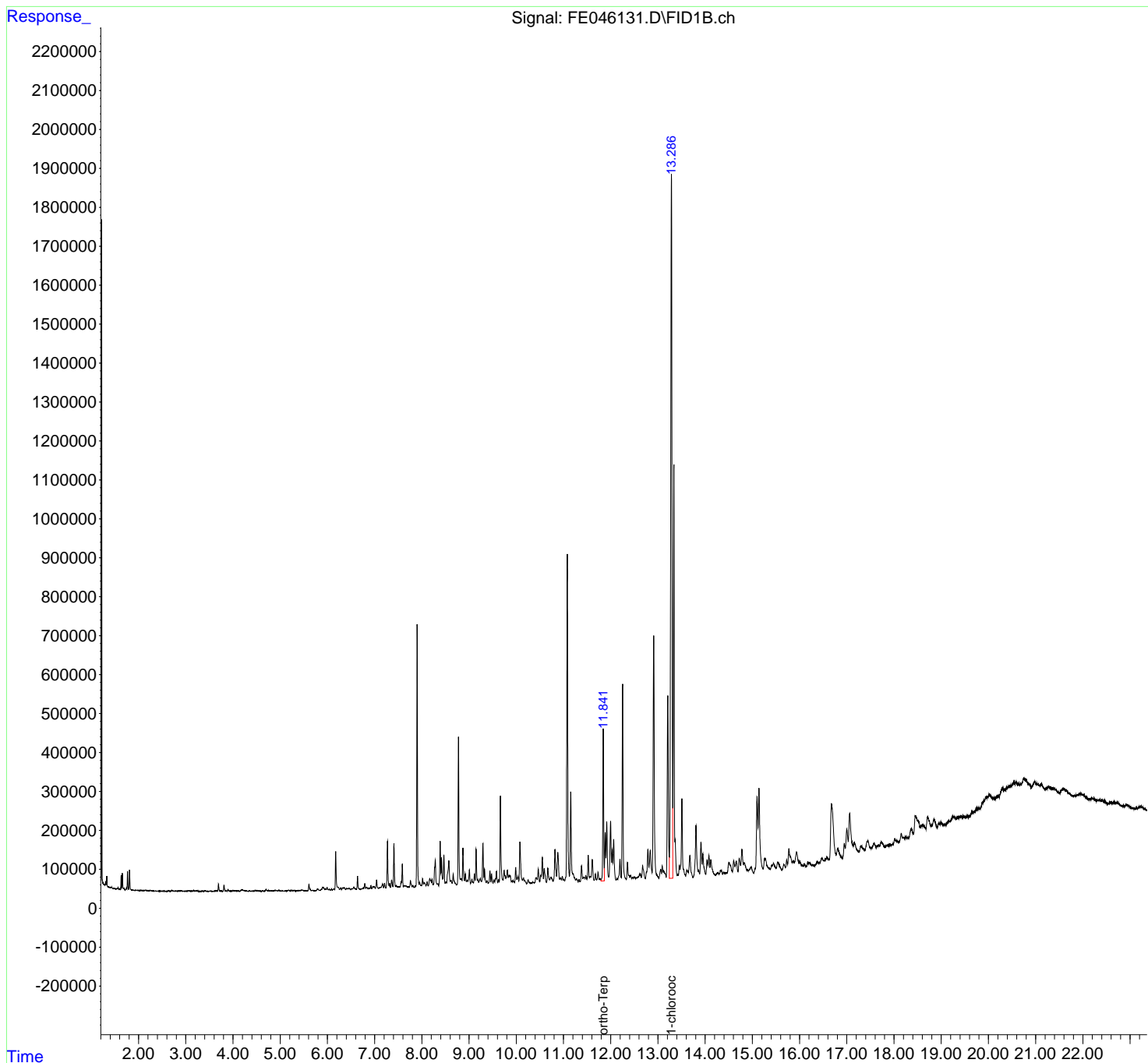
(m)=manual int.

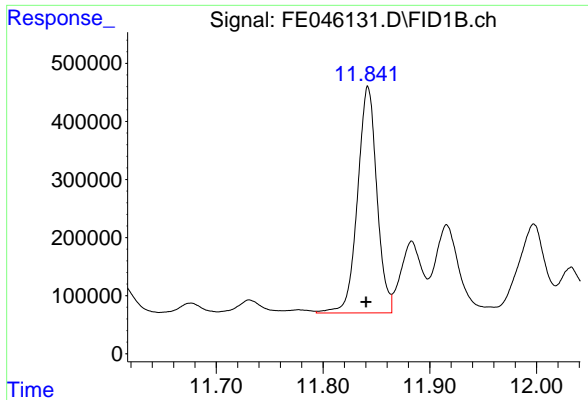
Data Path : Z:\pestpcbsrv\HPCHEM1\FID\_E\Data\FE010924AL\  
 Data File : FE046131.D  
 Signal(s) : FID1B.ch  
 Acq On : 09 Jan 2024 20:43  
 Operator : YP\AJ  
 Sample : P1070-02  
 Misc :  
 ALS Vial : 25 Sample Multiplier: 1

Instrument :  
 FID\_E  
 ClientSampleId :  
 HD-01-010824-E2

Integration File: autoint1.e  
 Quant Time: Jan 10 02:40:33 2024  
 Quant Method : Z:\pestpcbsrv\HPCHEM1\FID\_E\methods\Aliphatic EPH 122923.M  
 Quant Title : GC Extractables  
 QLast Update : Fri Dec 29 03:49:54 2023  
 Response via : Initial Calibration  
 Integrator: ChemStation

Volume Inj. : 1 ul  
 Signal Phase : Rxi-1ms  
 Signal Info : 20M x 0.18mm x 0.18um

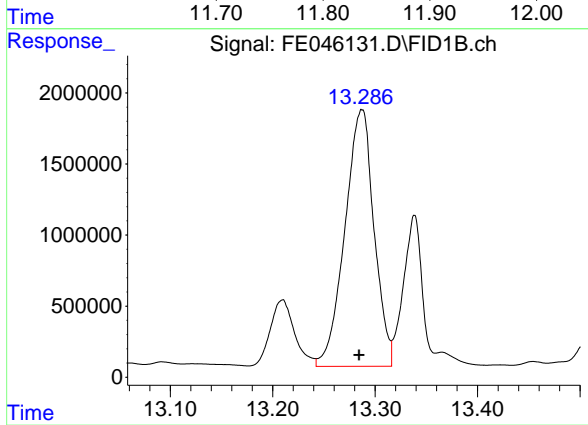




#9 ortho-Terphenyl (SURR)

R.T.: 11.842 min  
 Delta R.T.: 0.002 min  
 Response: 4906862  
 Conc: 27.00 ug/ml

Instrument :  
 FID\_E  
 ClientSampleId :  
 HD-01-010824-E2



#12 1-chlorooctadecane (SURR)

R.T.: 13.287 min  
 Delta R.T.: 0.003 min  
 Response: 35725676  
 Conc: 267.39 ug/ml