

Data Path : Z:\pestpcbsrv\HPCHEM1\FID_E\Data\FE011224AL\
 Data File : FE046193.D
 Signal(s) : FID1B.ch
 Acq On : 12 Jan 2024 16:40
 Operator : YP\AJ
 Sample : P1104-06
 Misc :
 ALS Vial : 17 Sample Multiplier: 1

Instrument :
 FID_E
 ClientSampleId :
 TP-2-EPH

Integration File: autoint1.e
 Quant Time: Jan 13 04:37:05 2024
 Quant Method : Z:\pestpcbsrv\HPCHEM1\FID_E\methods\Aliphatic EPH 122923.M
 Quant Title : GC Extractables
 QLast Update : Fri Dec 29 03:49:54 2023
 Response via : Initial Calibration
 Integrator: ChemStation

Volume Inj. : 1 ul
 Signal Phase : Rxi-1ms
 Signal Info : 20M x 0.18mm x 0.18um

Compound	R.T.	Response	Conc Units

System Monitoring Compounds			
9) S ortho-Terphenyl (SURR)	11.828	3804035	20.933 ug/ml
Spiked Amount	50.000	Recovery	= 41.87%
12) S 1-chlorooctadecane (S...	13.272	2783176	20.831 ug/ml
Spiked Amount	50.000	Recovery	= 41.66%

Target Compounds

(f)=RT Delta > 1/2 Window

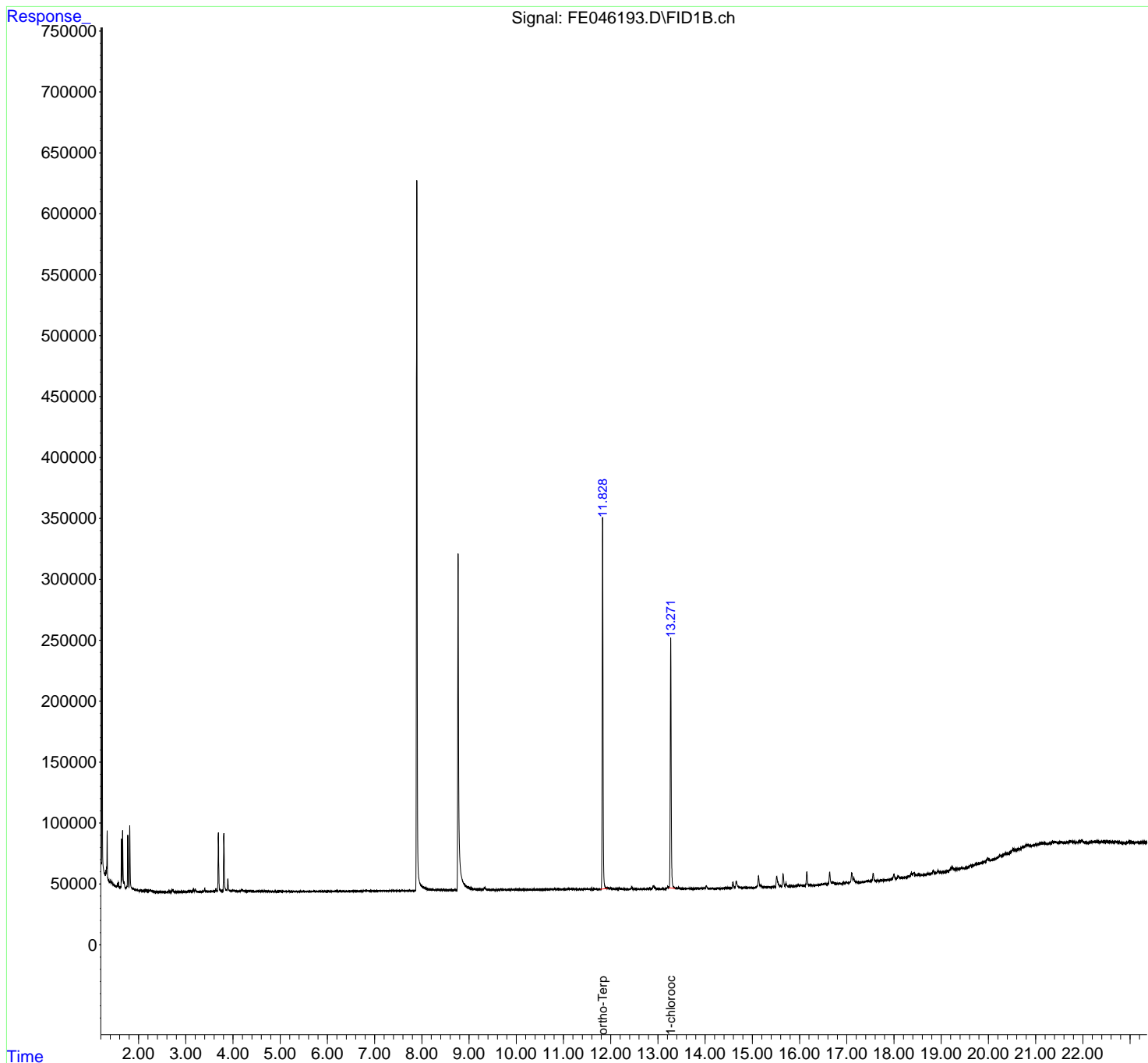
(m)=manual int.

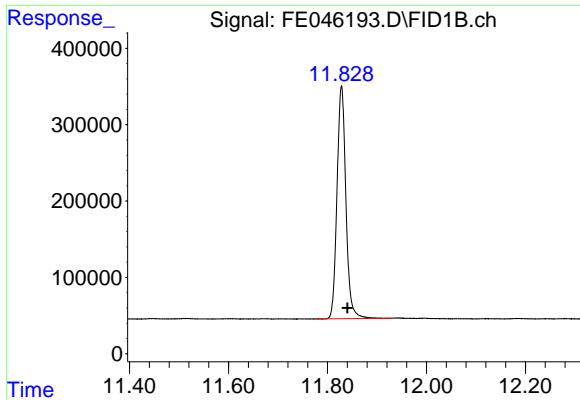
Data Path : Z:\pestpcbsrv\HPCHEM1\FID_E\Data\FE011224AL\
 Data File : FE046193.D
 Signal(s) : FID1B.ch
 Acq On : 12 Jan 2024 16:40
 Operator : YP\AJ
 Sample : P1104-06
 Misc :
 ALS Vial : 17 Sample Multiplier: 1

Instrument :
 FID_E
 ClientSampleId :
 TP-2-EPH

Integration File: autoint1.e
 Quant Time: Jan 13 04:37:05 2024
 Quant Method : Z:\pestpcbsrv\HPCHEM1\FID_E\methods\Aliphatic EPH 122923.M
 Quant Title : GC Extractables
 QLast Update : Fri Dec 29 03:49:54 2023
 Response via : Initial Calibration
 Integrator: ChemStation

Volume Inj. : 1 ul
 Signal Phase : Rxi-1ms
 Signal Info : 20M x 0.18mm x 0.18um

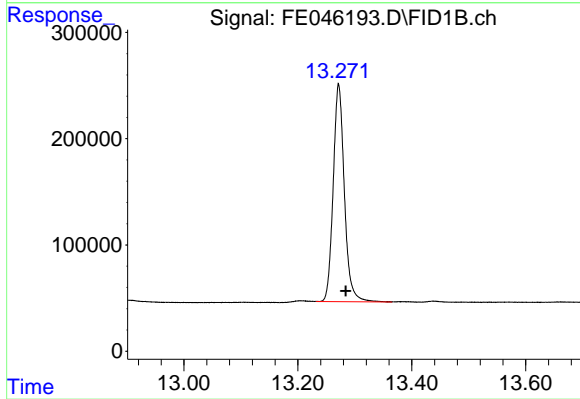




#9 ortho-Terphenyl (SURR)

R.T.: 11.828 min
Delta R.T.: -0.012 min
Response: 3804035
Conc: 20.93 ug/ml

Instrument :
FID_E
ClientSampleId :
TP-2-EPH



#12 1-chlorooctadecane (SURR)

R.T.: 13.272 min
Delta R.T.: -0.013 min
Response: 2783176
Conc: 20.83 ug/ml