

Data Path : Z:\pestpcbsrv\HPCHEM1\FID_E\Data\FE011425AL\
 Data File : FE051909.D
 Signal(s) : FID1B.ch
 Acq On : 14 Jan 2025 09:08
 Operator : YP\AJ
 Sample : Q1068-02DL 2X
 Misc :
 ALS Vial : 11 Sample Multiplier: 1

Instrument :
 FID_E
 ClientSampleId :

Integration File: autoint1.e
 Quant Time: Jan 15 01:23:32 2025
 Quant Method : Z:\pestpcbsrv\HPCHEM1\FID_E\methods\Aliphatic EPH 010225.M
 Quant Title : GC Extractables
 QLast Update : Tue Jan 14 13:43:24 2025
 Response via : Initial Calibration
 Integrator: ChemStation

Volume Inj. : 1 ul
 Signal Phase : Rxi-1ms
 Signal Info : 20M x 0.18mm x 0.18um

Compound	R.T.	Response	Conc Units

System Monitoring Compounds			
9) S ortho-Terphenyl (SURR)	12.152	1762742	12.161 ug/ml
Spiked Amount	50.000	Recovery	= 24.32%
12) S 1-chlorooctadecane (S...	13.578	1530629	13.320 ug/ml
Spiked Amount	50.000	Recovery	= 26.64%
Target Compounds			
14) T n-Tetracosane (C24)	15.423	141913	1.071 ug/ml

(f)=RT Delta > 1/2 Window

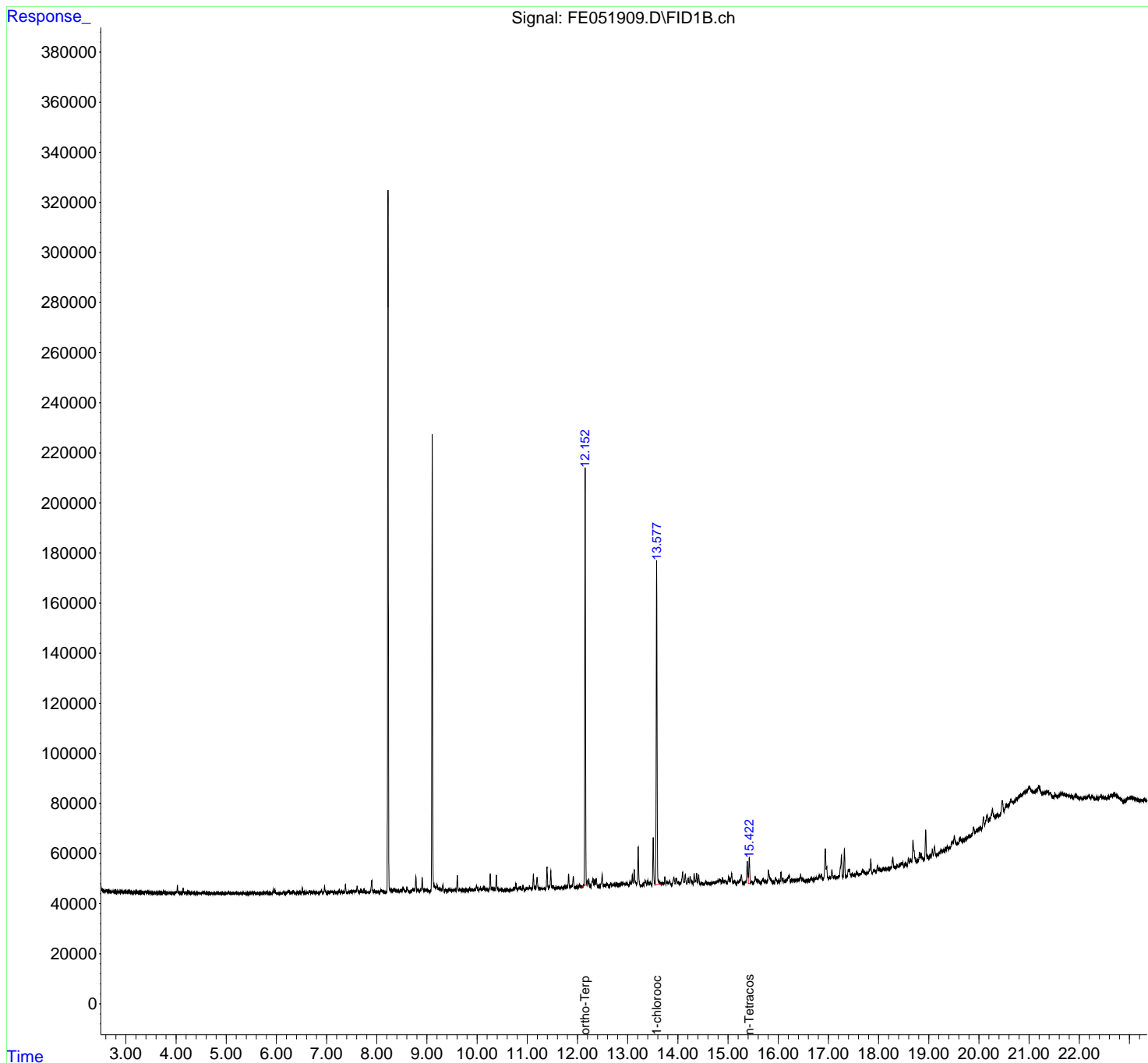
(m)=manual int.

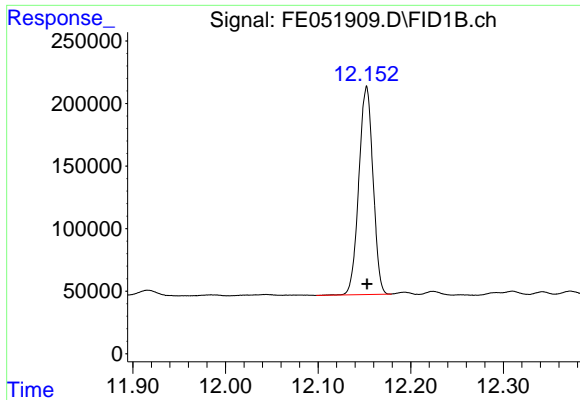
Data Path : Z:\pestpcbsrv\HPCHEM1\FID_E\Data\FE011425AL\
Data File : FE051909.D
Signal(s) : FID1B.ch
Acq On : 14 Jan 2025 09:08
Operator : YP\AJ
Sample : Q1068-02DL 2X
Misc :
ALS Vial : 11 Sample Multiplier: 1

Instrument :
FID_E
ClientSampleId :

Integration File: autoint1.e
Quant Time: Jan 15 01:23:32 2025
Quant Method : Z:\pestpcbsrv\HPCHEM1\FID_E\methods\Aliphatic EPH 010225.M
Quant Title : GC Extractables
QLast Update : Tue Jan 14 13:43:24 2025
Response via : Initial Calibration
Integrator: ChemStation

Volume Inj. : 1 ul
Signal Phase : Rxi-1ms
Signal Info : 20M x 0.18mm x 0.18um

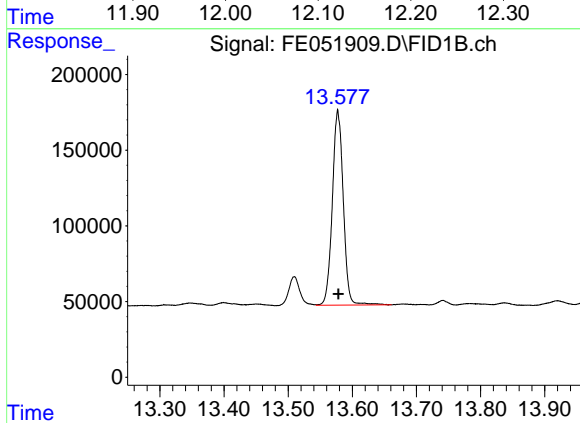




#9 ortho-Terphenyl (SURR)

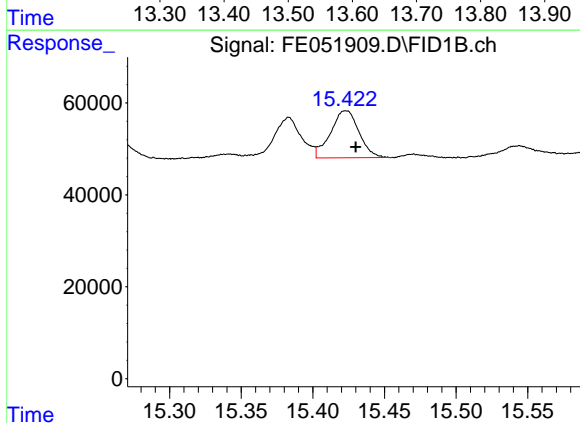
R.T.: 12.152 min
 Delta R.T.: 0.000 min
 Response: 1762742
 Conc: 12.16 ug/ml

Instrument :
 FID_E
 ClientSampleId :



#12 1-chlorooctadecane (SURR)

R.T.: 13.578 min
 Delta R.T.: 0.000 min
 Response: 1530629
 Conc: 13.32 ug/ml



#14 n-Tetracosane (C24)

R.T.: 15.423 min
 Delta R.T.: -0.007 min
 Response: 141913
 Conc: 1.07 ug/ml