

Data Path : Z:\pestpcbsrv\HPCHEM1\FID_E\Data\FE011425AL\
 Data File : FE051919.D
 Signal(s) : FID1B.ch
 Acq On : 14 Jan 2025 16:42
 Operator : YP\AJ
 Sample : Q1076-01MSD
 Misc :
 ALS Vial : 18 Sample Multiplier: 1

Instrument :
 FID_E
ClientSampleId :
 ARS20-0006MSD

Manual Integrations
APPROVED
 Reviewed By :Yogesh Patel 01/15/2025
 Supervised By :Ankita Jodhani 01/15/2025

Integration File: autoint1.e
 Quant Time: Jan 15 01:28:25 2025
 Quant Method : Z:\pestpcbsrv\HPCHEM1\FID_E\methods\Aliphatic EPH 010225.M
 Quant Title : GC Extractables
 QLast Update : Tue Jan 14 13:43:24 2025
 Response via : Initial Calibration
 Integrator: ChemStation

Volume Inj. : 1 ul
 Signal Phase : Rxi-1ms
 Signal Info : 20M x 0.18mm x 0.18um

Compound	R.T.	Response	Conc Units

System Monitoring Compounds			
9) S ortho-Terphenyl (SURR)	12.160	5086929	35.094 ug/mlm
Spiked Amount	50.000	Recovery =	70.19%
12) S 1-chlorooctadecane (S...	13.585	4343770	37.802 ug/mlm
Spiked Amount	50.000	Recovery =	75.60%
Target Compounds			
1) T n-Nonane (C9)	3.571	2824817	25.575 ug/ml
2) T n-Decane (C10)	4.812	3400096	29.880 ug/ml
3) T A~Naphthalene (C11.7)	6.516	4406669	34.552 ug/ml
4) T n-Dodecane (C12)	6.961	4068373	34.644 ug/ml
5) T A~2-methylnaphthalene...	7.606	4398867	35.147 ug/ml
6) T n-Tetradecane (C14)	8.784	4825611	40.248 ug/ml
7) T n-Hexadecane (C16)	10.389	5064206	39.573 ug/mlm
8) T n-Octadecane (C18)	11.832	5390195	40.508 ug/mlm
10) T n-Eicosane (C20)	13.141	5540127	42.105 ug/mlm
11) T n-Heneicosane (C21)	13.751	5980188	45.503 ug/mlm
13) T n-Docosane (C22)	14.335	4961644	37.821 ug/mlm
14) T n-Tetracosane (C24)	15.438	9765862	73.728 ug/ml
15) T n-Hexacosane (C26)	16.455	4804065	36.613 ug/ml
16) T n-Octacosane (C28)	17.401	4750583	36.793 ug/ml
17) T n-Tricontane (C30)	18.289	4565280	34.727 ug/ml
18) T n-Dotriacontane (C32)	19.118	4397785	34.654 ug/mlm
19) T n-Tetratriacontane (C34)	19.900	4045692	36.412 ug/ml
20) T n-Hexatriacontane (C36)	20.638	3578190	36.269 ug/ml
21) T n-Octatriacontane (C38)	21.425	3579673	37.808 ug/ml
22) T n-Tetracontane (C40)	22.431	3379040	36.708 ug/mlm

(f)=RT Delta > 1/2 Window

(m)=manual int.

Data Path : Z:\pestpcbsrv\HPCHEM1\FID_E\Data\FE011425AL\
 Data File : FE051919.D
 Signal(s) : FID1B.ch
 Acq On : 14 Jan 2025 16:42
 Operator : YP\AJ
 Sample : Q1076-01MSD
 Misc :
 ALS Vial : 18 Sample Multiplier: 1

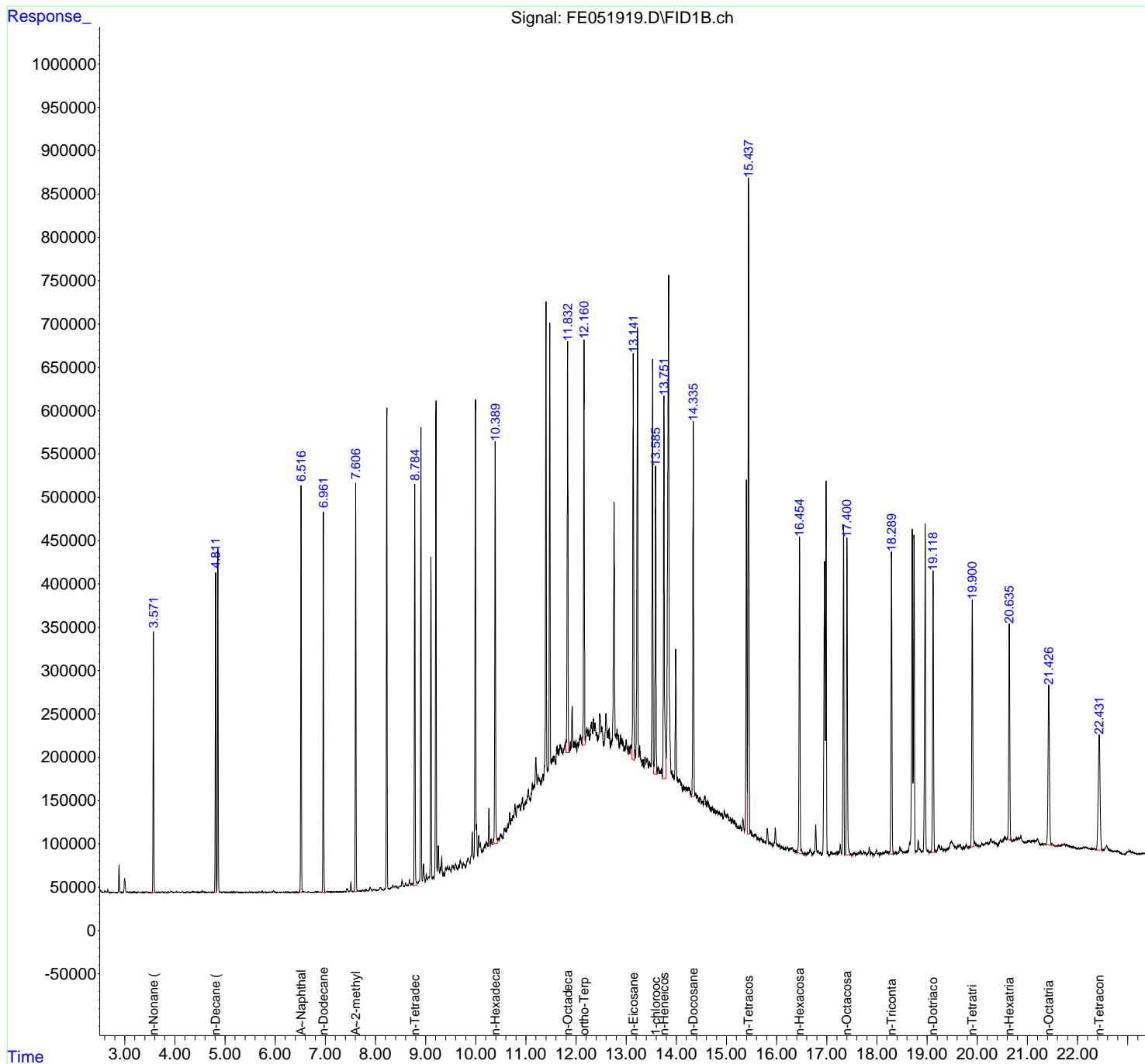
Instrument :
 FID_E
 ClientSampleId :
 ARS20-0006MSD

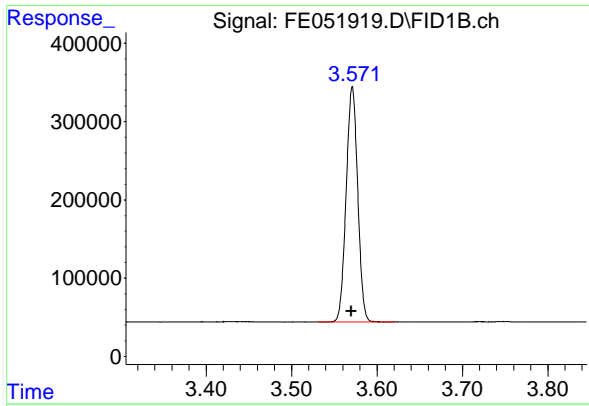
Manual Integrations
 APPROVED

Reviewed By :Yogesh Patel 01/15/2025
 Supervised By :Ankita Jodhani 01/15/2025

Integration File: autoint1.e
 Quant Time: Jan 15 01:28:25 2025
 Quant Method : Z:\pestpcbsrv\HPCHEM1\FID_E\methods\Aliphatic EPH 010225.
 Quant Title : GC Extractables
 QLast Update : Tue Jan 14 13:43:24 2025
 Response via : Initial Calibration
 Integrator: ChemStation

Volume Inj. : 1 ul
 Signal Phase : Rxi-1ms
 Signal Info : 20M x 0.18mm x 0.18um





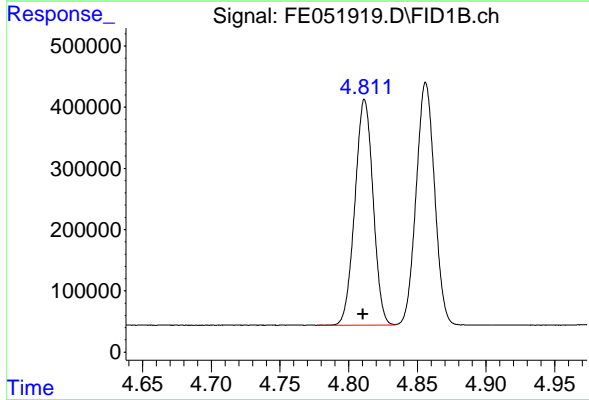
#1 n-Nonane (C9)

R.T.: 3.571 min
Delta R.T.: 0.001 min
Response: 2824817
Conc: 25.57 ug/ml

Instrument : FID_E
Client Sample Id : ARS20-0006MSD

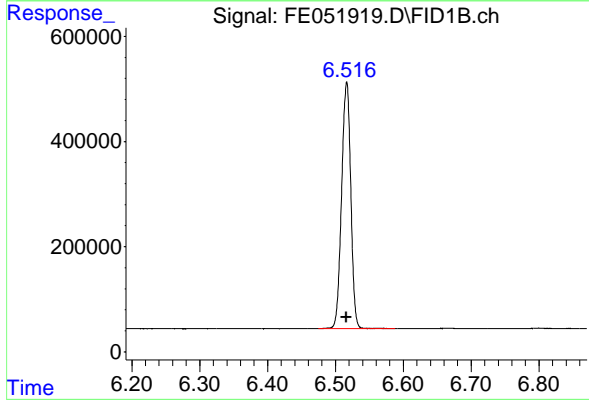
Manual Integrations
APPROVED

Reviewed By :Yogesh Patel 01/15/2025
Supervised By :Ankita Jodhani 01/15/2025



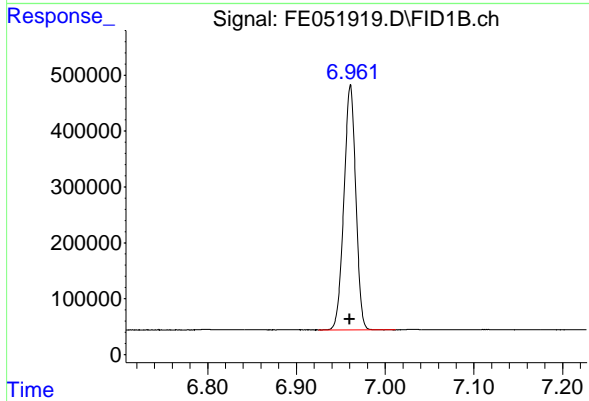
#2 n-Decane (C10)

R.T.: 4.812 min
Delta R.T.: 0.001 min
Response: 3400096
Conc: 29.88 ug/ml



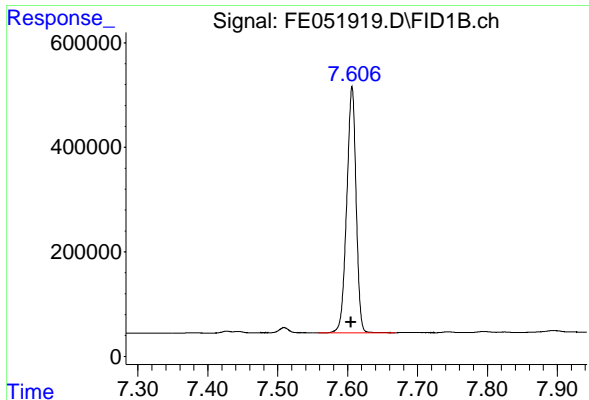
#3 A~Naphthalene (C11.7)

R.T.: 6.516 min
Delta R.T.: 0.000 min
Response: 4406669
Conc: 34.55 ug/ml



#4 n-Dodecane (C12)

R.T.: 6.961 min
Delta R.T.: 0.000 min
Response: 4068373
Conc: 34.64 ug/ml



#5 A~2-methylnaphthalene (C12.89)

R.T.: 7.606 min
 Delta R.T.: 0.001 min
 Response: 4398867
 Conc: 35.15 ug/ml

Instrument :

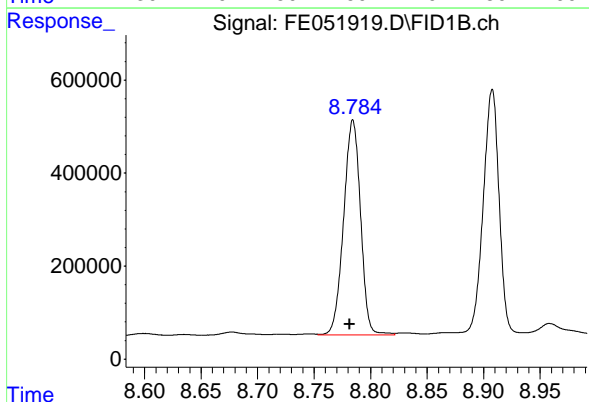
FID_E

ClientSampleId :

ARS20-0006MSD

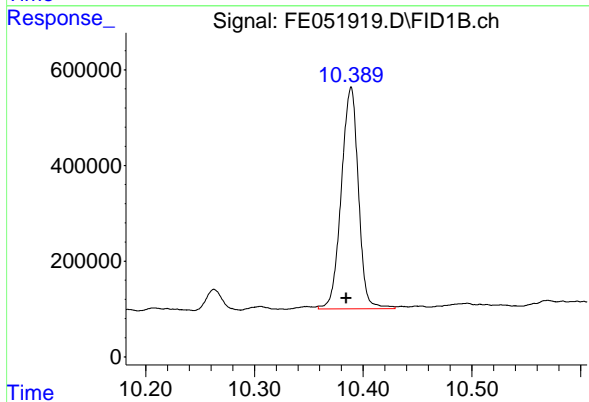
Manual Integrations
 APPROVED

Reviewed By :Yogesh Patel 01/15/2025
 Supervised By :Ankita Jodhani 01/15/2025



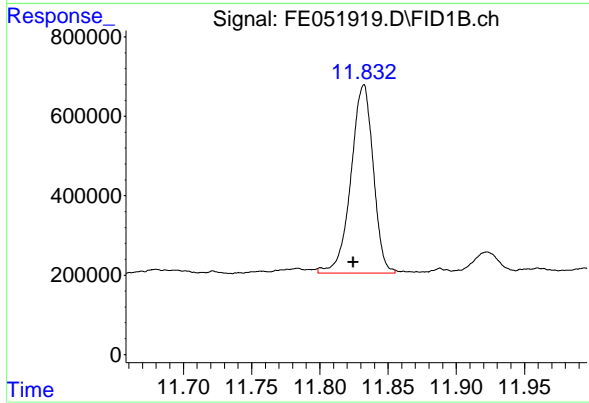
#6 n-Tetradecane (C14)

R.T.: 8.784 min
 Delta R.T.: 0.003 min
 Response: 4825611
 Conc: 40.25 ug/ml



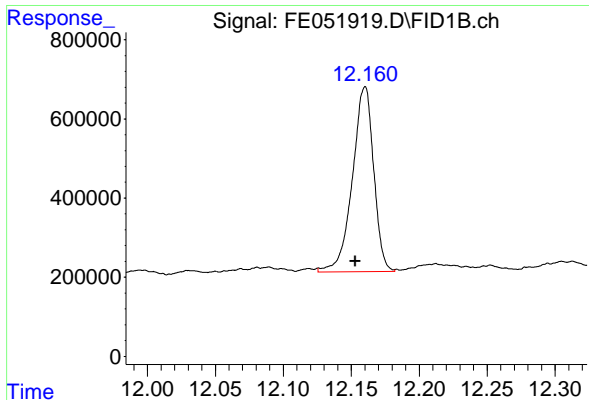
#7 n-Hexadecane (C16)

R.T.: 10.389 min
 Delta R.T.: 0.004 min
 Response: 5064206
 Conc: 39.57 ug/ml m



#8 n-Octadecane (C18)

R.T.: 11.832 min
 Delta R.T.: 0.008 min
 Response: 5390195
 Conc: 40.51 ug/ml m



#9 ortho-Terphenyl (SURR)

R.T.: 12.160 min
 Delta R.T.: 0.007 min
 Response: 5086929
 Conc: 35.09 ug/ml

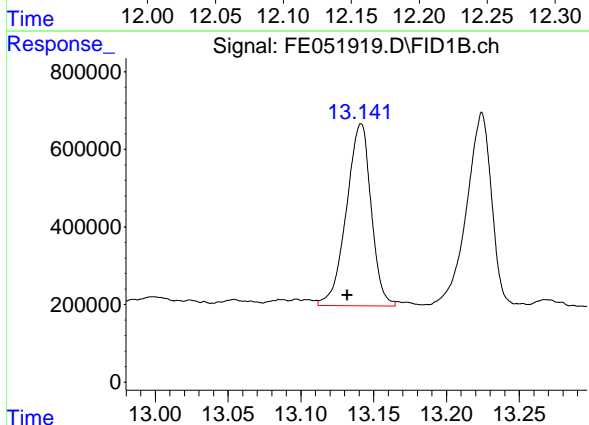
Instrument :

FID_E

Client Sample Id :
 ARS20-0006MSD

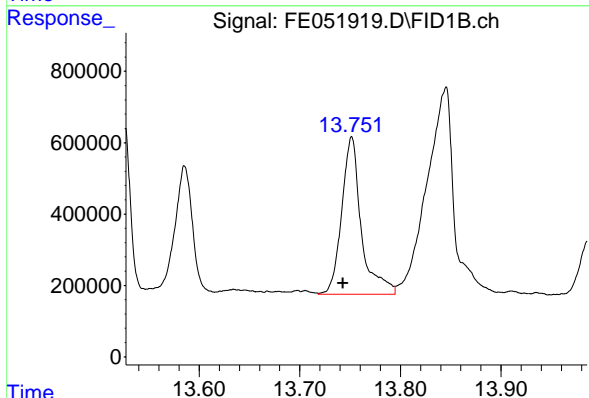
Manual Integrations
 APPROVED

Reviewed By :Yogesh Patel 01/15/2025
 Supervised By :Ankita Jodhani 01/15/2025



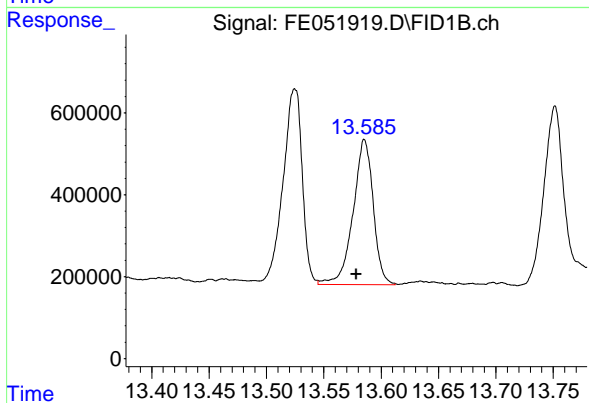
#10 n-Eicosane (C20)

R.T.: 13.141 min
 Delta R.T.: 0.009 min
 Response: 5540127
 Conc: 42.11 ug/ml m



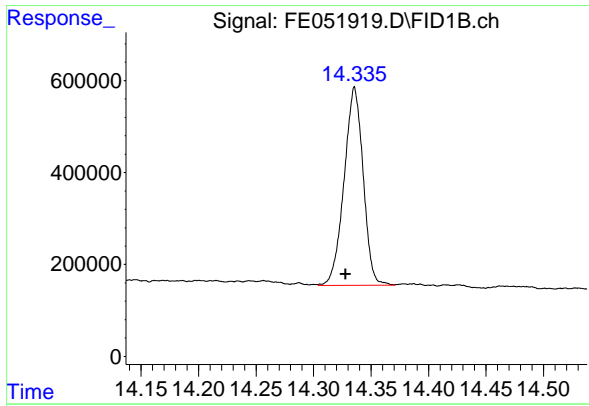
#11 n-Heneicosane (C21)

R.T.: 13.751 min
 Delta R.T.: 0.008 min
 Response: 5980188
 Conc: 45.50 ug/ml m



#12 1-chlorooctadecane (SURR)

R.T.: 13.585 min
 Delta R.T.: 0.006 min
 Response: 4343770
 Conc: 37.80 ug/ml m



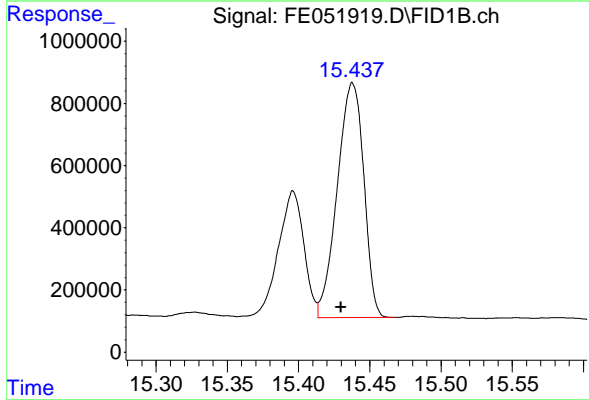
#13 n-Docosane (C22)

R.T.: 14.335 min
 Delta R.T.: 0.008 min
 Response: 4961644
 Conc: 37.82 ug/ml

Instrument : FID_E
 ClientSampleId : ARS20-0006MSD

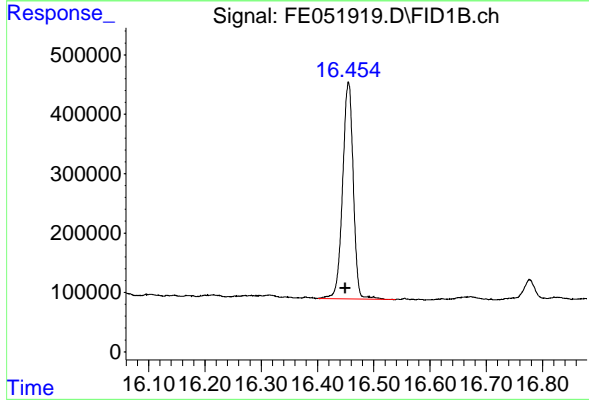
Manual Integrations
 APPROVED

Reviewed By :Yogesh Patel 01/15/2025
 Supervised By :Ankita Jodhani 01/15/2025



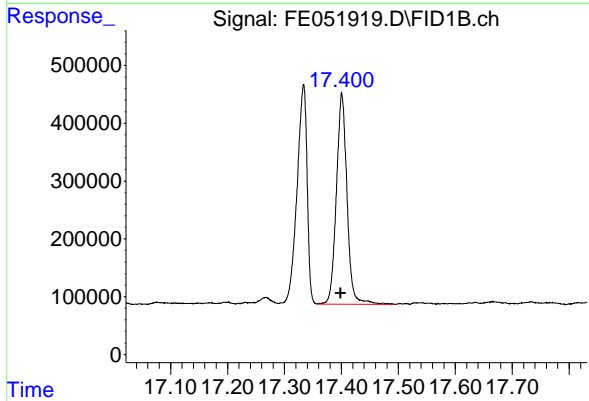
#14 n-Tetracosane (C24)

R.T.: 15.438 min
 Delta R.T.: 0.008 min
 Response: 9765862
 Conc: 73.73 ug/ml



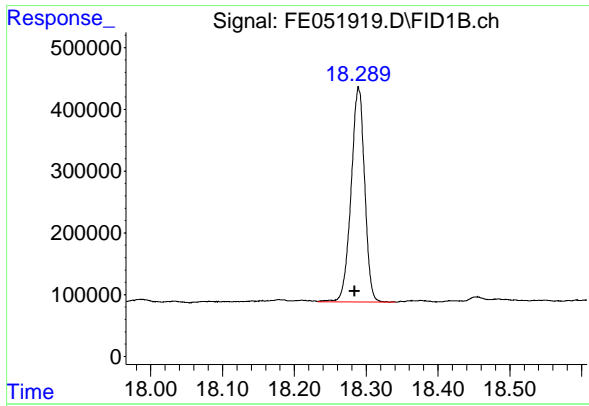
#15 n-Hexacosane (C26)

R.T.: 16.455 min
 Delta R.T.: 0.005 min
 Response: 4804065
 Conc: 36.61 ug/ml



#16 n-Octacosane (C28)

R.T.: 17.401 min
 Delta R.T.: 0.002 min
 Response: 4750583
 Conc: 36.79 ug/ml



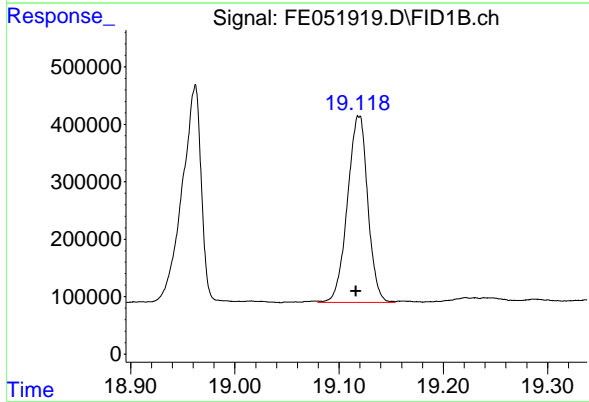
#17 n-Tricontane (C30)

R.T.: 18.289 min
 Delta R.T.: 0.006 min
 Response: 4565280
 Conc: 34.73 ug/ml

Instrument : FID_E
 Client Sample Id : ARS20-0006MSD

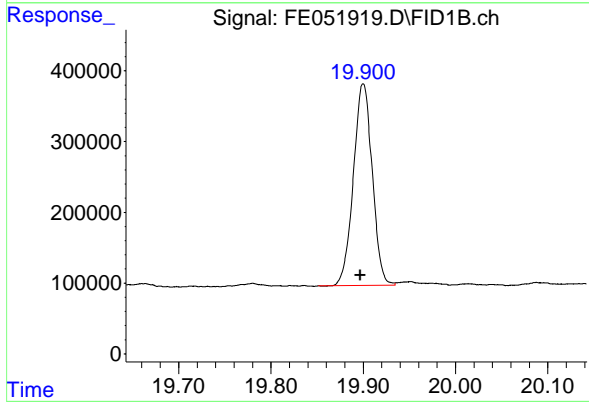
Manual Integrations
 APPROVED

Reviewed By :Yogesh Patel 01/15/2025
 Supervised By :Ankita Jodhani 01/15/2025



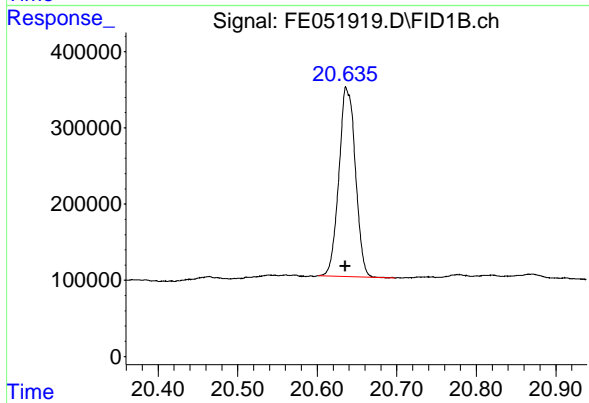
#18 n-Dotriacontane (C32)

R.T.: 19.118 min
 Delta R.T.: 0.002 min
 Response: 4397785
 Conc: 34.65 ug/ml m



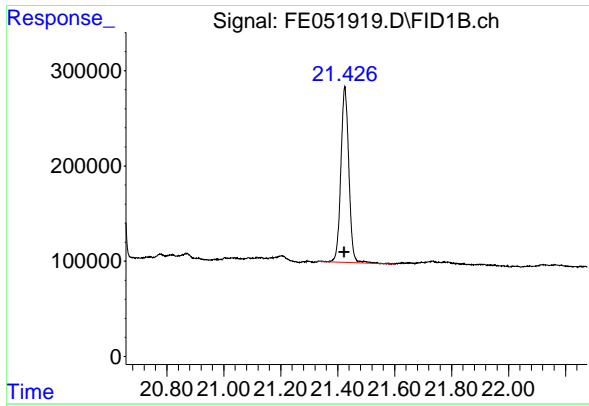
#19 n-Tetracontane (C34)

R.T.: 19.900 min
 Delta R.T.: 0.003 min
 Response: 4045692
 Conc: 36.41 ug/ml



#20 n-Hexatriacontane (C36)

R.T.: 20.638 min
 Delta R.T.: 0.002 min
 Response: 3578190
 Conc: 36.27 ug/ml



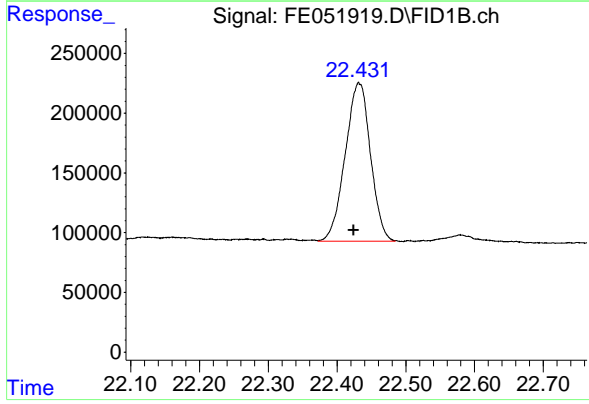
#21 n-Octatriacontane (C38)

R.T.: 21.425 min
 Delta R.T.: 0.002 min
 Response: 3579673
 Conc: 37.81 ug/ml

Instrument :
 FID_E
 ClientSampleId :
 ARS20-0006MSD

Manual Integrations
 APPROVED

Reviewed By :Yogesh Patel 01/15/2025
 Supervised By :Ankita Jodhani 01/15/2025



#22 n-Tetracontane (C40)

R.T.: 22.431 min
 Delta R.T.: 0.007 min
 Response: 3379040
 Conc: 36.71 ug/ml m