

Data Path : Z:\pestpcbsrv\HPCHEM1\FID\_E\Data\FE011723AL\  
 Data File : FE039865.D  
 Signal(s) : FID1B.ch  
 Acq On : 17 Jan 2023 19:16  
 Operator : YP\AJ  
 Sample : 01167-01DL 5X  
 Misc :  
 ALS Vial : 18 Sample Multiplier: 1

Integration File: sample.E  
 Quant Time: Jan 18 00:10:23 2023  
 Quant Method : Z:\pestpcbsrv\HPCHEM1\FID\_E\methods\Aliphatic EPH 011023.M  
 Quant Title : GC Extractables  
 QLast Update : Tue Jan 10 04:24:52 2023  
 Response via : Initial Calibration  
 Integrator: ChemStation

Volume Inj. : 1 ul  
 Signal Phase : Rxi-1ms  
 Signal Info : 20M x 0.18mm x 0.18um

Compound	R.T.	Response	Conc Units
-----			
System Monitoring Compounds			
9) S ortho-Terphenyl (SURR)	11.921	884273	5.758 ug/mlm
Spiked Amount	50.000	Recovery =	11.52%
12) S 1-chlorooctadecane (S...	13.360	1032220	8.845 ug/ml
Spiked Amount	50.000	Recovery =	17.69%

Target Compounds

-----

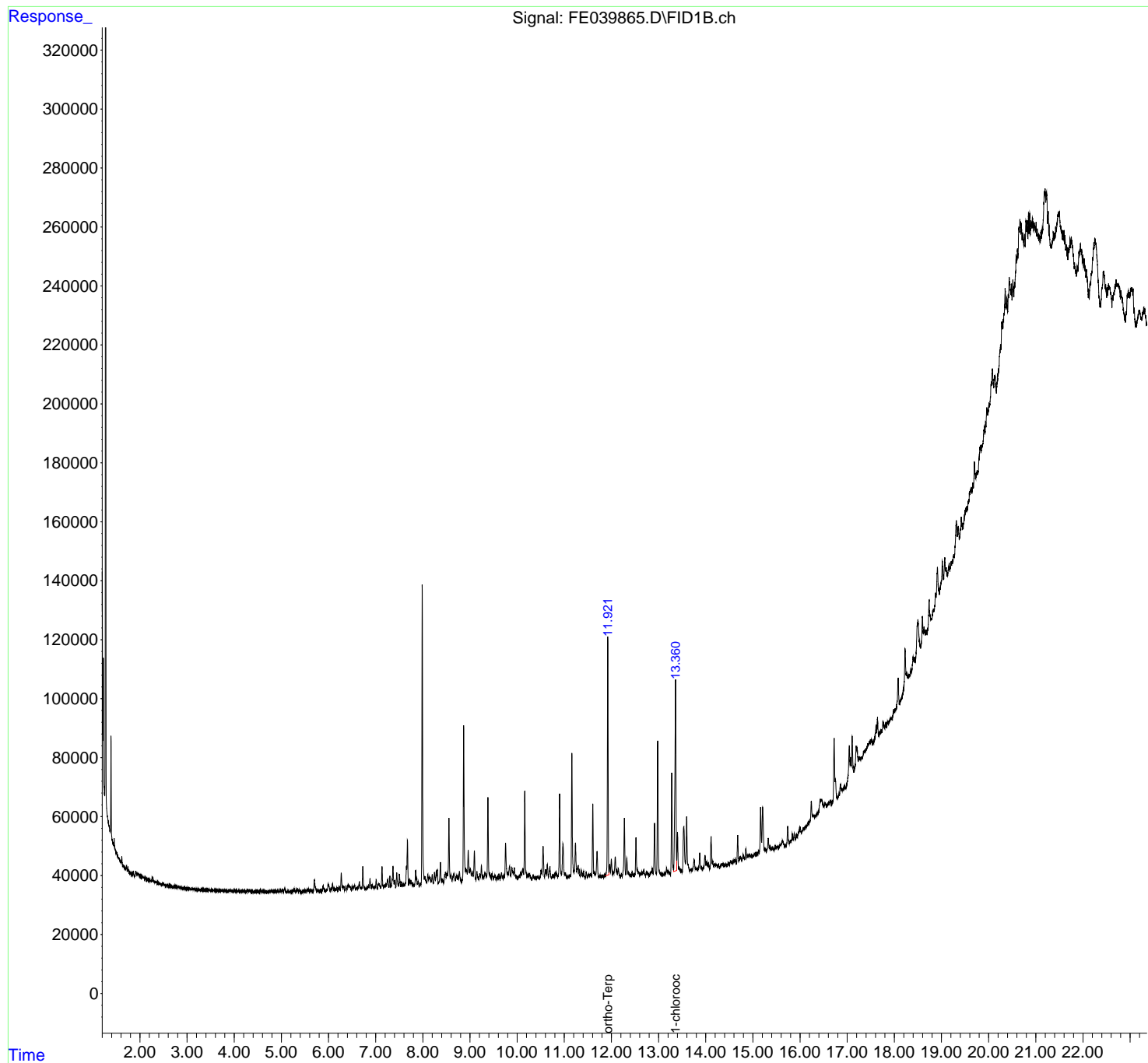
(f)=RT Delta > 1/2 Window

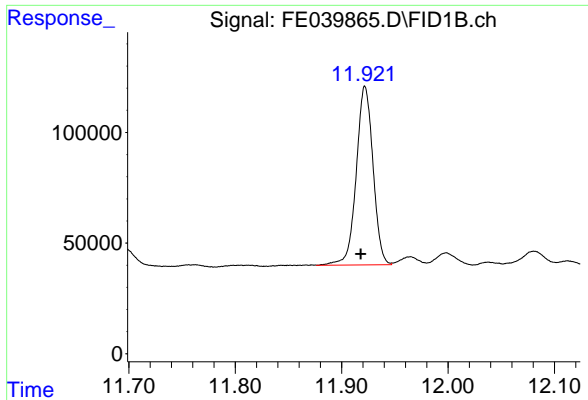
(m)=manual int.

Data Path : Z:\pestpcbsrv\HPCHEM1\FID\_E\Data\FE011723AL\  
Data File : FE039865.D  
Signal(s) : FID1B.ch  
Acq On : 17 Jan 2023 19:16  
Operator : YP\AJ  
Sample : 01167-01DL 5X  
Misc :  
ALS Vial : 18 Sample Multiplier: 1

Integration File: sample.E  
Quant Time: Jan 18 00:10:23 2023  
Quant Method : Z:\pestpcbsrv\HPCHEM1\FID\_E\methods\Aliphatic EPH 011023.M  
Quant Title : GC Extractables  
QLast Update : Tue Jan 10 04:24:52 2023  
Response via : Initial Calibration  
Integrator: ChemStation

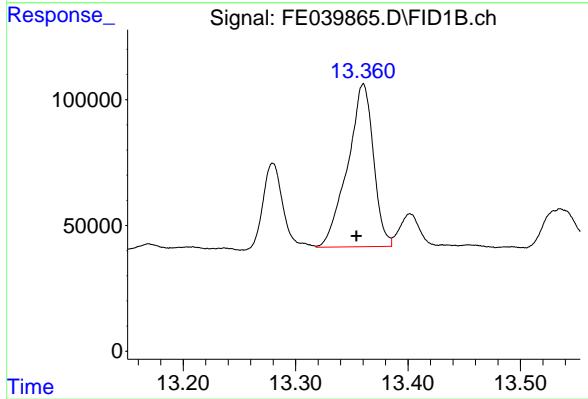
Volume Inj. : 1 ul  
Signal Phase : Rxi-1ms  
Signal Info : 20M x 0.18mm x 0.18um





#9 ortho-Terphenyl (SURR)

R.T.: 11.921 min  
Delta R.T.: 0.003 min  
Response: 884273  
Conc: 5.76 ug/ml m



#12 1-chlorooctadecane (SURR)

R.T.: 13.360 min  
Delta R.T.: 0.006 min  
Response: 1032220  
Conc: 8.85 ug/ml