

Data Path : Z:\pestpcbsrv\HPCHEM1\FID\_E\Data\FE011824AL\  
 Data File : FE046295.D  
 Signal(s) : FID1B.ch  
 Acq On : 18 Jan 2024 21:11  
 Operator : YP\AJ  
 Sample : P1161-02DL 10X  
 Misc :  
 ALS Vial : 25 Sample Multiplier: 1

**Instrument :**  
 FID\_E  
**ClientSampleId :**  
 SU-02-011724-E2DL

Integration File: autoint1.e  
 Quant Time: Jan 19 00:13:34 2024  
 Quant Method : Z:\pestpcbsrv\HPCHEM1\FID\_E\methods\Aliphatic EPH 122923.M  
 Quant Title : GC Extractables  
 QLast Update : Fri Dec 29 03:49:54 2023  
 Response via : Initial Calibration  
 Integrator: ChemStation

Volume Inj. : 1 ul  
 Signal Phase : Rxi-1ms  
 Signal Info : 20M x 0.18mm x 0.18um

Compound	R.T.	Response	Conc Units
-----			
System Monitoring Compounds			
9) S ortho-Terphenyl (SURR)	11.825	515243	2.835 ug/ml
Spiked Amount	50.000	Recovery =	5.67%
12) S 1-chlorooctadecane (S...	13.268	373523	2.796 ug/ml
Spiked Amount	50.000	Recovery =	5.59%

Target Compounds

-----

(f)=RT Delta > 1/2 Window

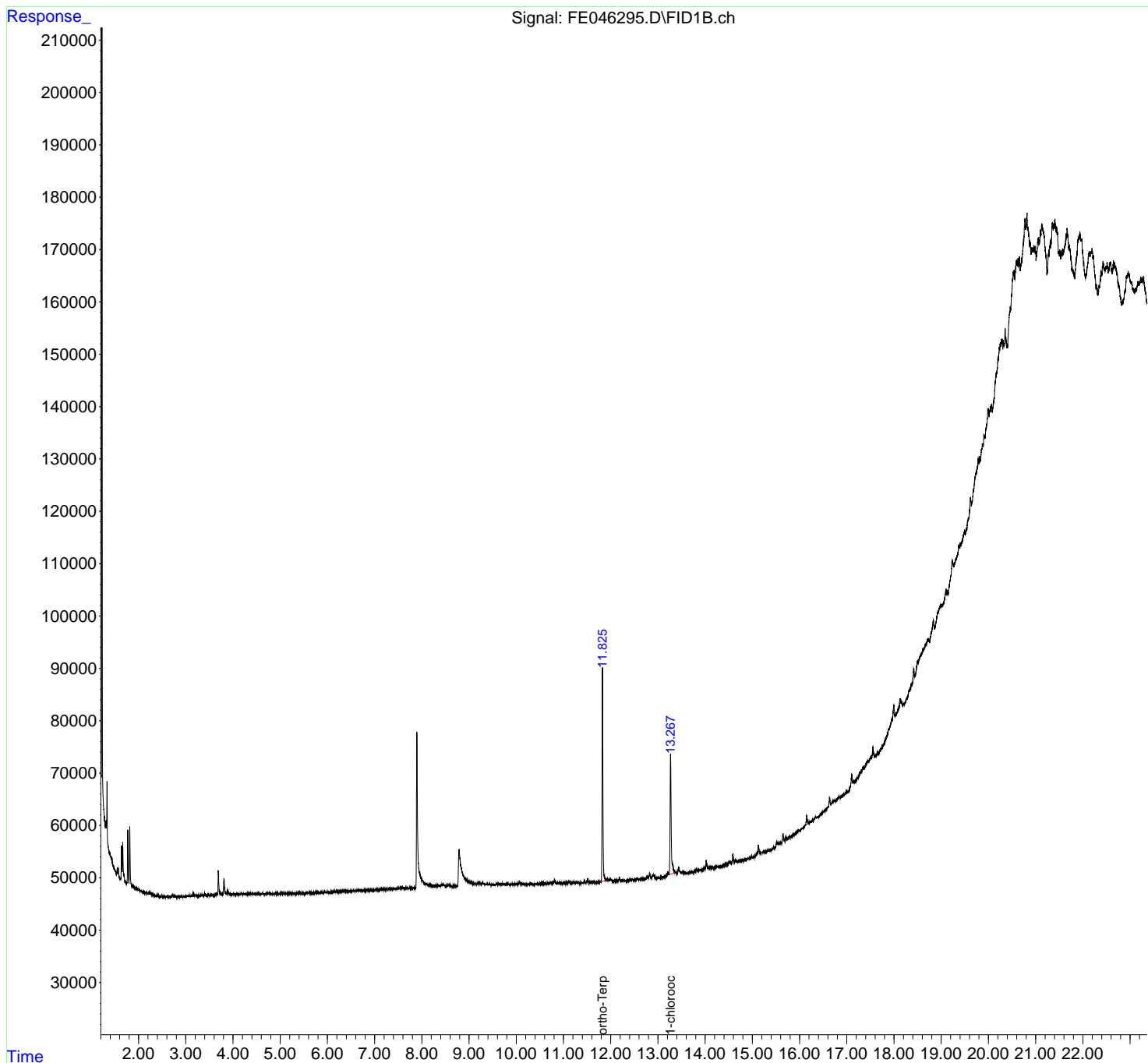
(m)=manual int.

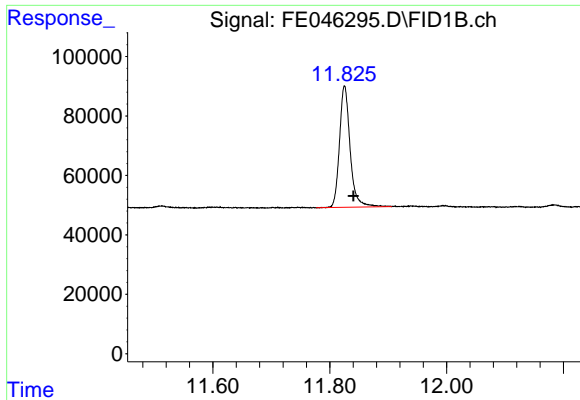
Data Path : Z:\pestpcbsrv\HPCHEM1\FID\_E\Data\FE011824AL\  
 Data File : FE046295.D  
 Signal(s) : FID1B.ch  
 Acq On : 18 Jan 2024 21:11  
 Operator : YP\AJ  
 Sample : P1161-02DL 10X  
 Misc :  
 ALS Vial : 25 Sample Multiplier: 1

Instrument :  
 FID\_E  
 ClientSampleId :  
 SU-02-011724-E2DL

Integration File: autoint1.e  
 Quant Time: Jan 19 00:13:34 2024  
 Quant Method : Z:\pestpcbsrv\HPCHEM1\FID\_E\methods\Aliphatic EPH 122923.M  
 Quant Title : GC Extractables  
 QLast Update : Fri Dec 29 03:49:54 2023  
 Response via : Initial Calibration  
 Integrator: ChemStation

Volume Inj. : 1 ul  
 Signal Phase : Rxi-1ms  
 Signal Info : 20M x 0.18mm x 0.18um

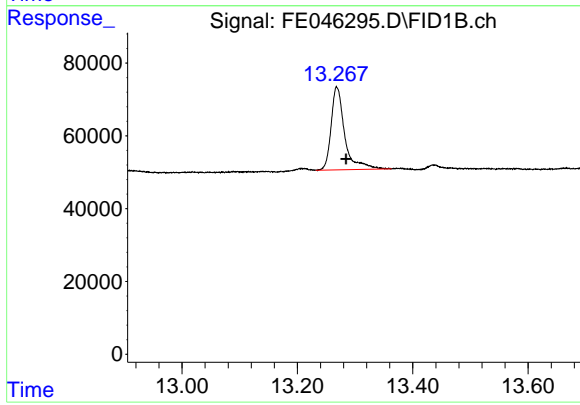




#9 ortho-Terphenyl (SURR)

R.T.: 11.825 min  
Delta R.T.: -0.015 min  
Response: 515243  
Conc: 2.84 ug/ml

Instrument :  
FID\_E  
ClientSampleId :  
SU-02-011724-E2DL



#12 1-chlorooctadecane (SURR)

R.T.: 13.268 min  
Delta R.T.: -0.016 min  
Response: 373523  
Conc: 2.80 ug/ml